



Board of Directors *Notice of Meeting*

November 14th - 10:00 a.m., Administration Office, Strathroy

Tentative Agenda

1. Chair's Remarks
2. Declaration of Pecuniary Interests
3. Minutes
4. General Manager's Report
 - (i) GM's Report
5. Chair & Conservation Ontario Report
 - (i) CO September 30, 2013 minutes
6. Business Arising from last meeting
 - (i) Business Arising Report
 - (ii) 2012 Conservation Authority statistical survey - update
7. Conservation Area Reports
 - (i) Conservation Areas Update
 - (ii) Camper Events and Activities
8. Water Resources Reports
 - (i) Current Watershed Conditions
 - (ii) Cathcart Park Shore Protection Revitalization Project
 - (iii) Tender Opening for Phase III Cathcart Park Shore Protection
9. Biology Reports
 - (i) Fish Habitat Review Activities
 - (ii) Lambton Shores – Healthy Lake Huron Program
 - (iii) Healthy Sydenham Headwaters Report
 - (iv) Sydenham River Conservation Action Plan Report
 - (v) Electrofishing Report
10. Conservation Services Report
 - (i) Update on Programs and Projects
11. Planning & Research Reports
 - (i) Regulations Committee Report
 - (ii) Municipal Drain Report
 - (iii) Monthly Planning Activity Summary Report
 - (iv) St. Clair River AOC
12. Finance Reports
 - (i) Revenue & Expenditure Report
 - (ii) September Disbursements
 - (iii) 2013 General Levy Update
 - (iv) Schedule of Fees for 2014
 - (v) Apportioning of Matching and Non-Matching general levy for 2014
 - (vi) 2014 Preliminary Forecast Budget
 - (vii) Health & Safety Minutes

13. Communications Reports
 - (i) Communications Report
 - (ii) Conservation Education Report
14. Drinking Water Source Protection
15. New Business
16. Adjournment

Please contact Marlene (call 519-245-3710, 1-866-505-3710 or e-mail mdorrestyn@scrca.on.ca) at the Administration Office by November 12th, if you are unable to attend.

- 8.(iii) Moved by: Seconded by:
That the Board of Directors acknowledges the report dated November 14, 2013 regarding the tender opening for Phase III of the Cathcart Park Shore Protection Revitalization Project and further accepts the tender of _____ subject to a complete review of the tenders, a satisfactory financial capabilities review of the preferred contractor and authorizes the Chair to sign contracts for the project.
- 9.(i) Moved by: Seconded by:
That the Board of Directors acknowledges the status report dated November 1 2013, regarding current monitoring, education and stewardship projects with Aamjiwnaang and Kettle and Stony Point First Nations.
- 9.(ii) Moved by: Seconded by:
That the Board of Directors acknowledges the status report dated November 1 2013, regarding Lambton Shores – Healthy Lake Huron program, including the cover crop grant program, upcoming agricultural workshops and recent wetland enhancement plantings with Communities in Bloom.
- 9.(iii) Moved by: Seconded by:
That the Board of Directors acknowledges the status report dated November 1 2013, regarding Healthy Sydenham Headwaters including active stewardship projects and recent monitoring, stewardship and education events with the local communities and schools?
- 9.(iv) Moved by: Seconded by:
That the Board of Directors acknowledges the status report dated November 1 2013, regarding development of a Sydenham River Conservation Action Plan in cooperation with watershed municipalities, farm organizations, residents, interest groups and Carolinian Canada.
- 9.(v) Moved by: Seconded by:
That the Board of Directors acknowledges the status report dated November 1 2013, regarding recent electrofishing in the Sydenham River and its tributaries, including identification of 18 fish species that are dependent on healthy watercourse conditions.
- 10.(i) Moved by: Seconded by:
That the Board of Directors acknowledges the report dated November 1, 2013 on the Conservation Services programs and projects across the watershed.
- 11.(i) Moved by: Seconded by:
That the Board of Directors acknowledges and concurs with the Regulations Activity Summary Reports on "Development, Interference with Wetlands & Alterations to Shorelines & Watercourses" Regulations (Ontario Regulation 171/06), dated September 30, 2013 and October 31, 2013.

- 11.(ii) Moved by: Seconded by:
That the Board of Directors acknowledges and concurs with the municipal drain June-September 2013 activity report associated with the Drainage Act and Conservation Authorities Act Protocol (DART) approved by the Board April 18, 2013.
- 11.(iii) Moved by: Seconded by:
That the Board of Directors acknowledges the St. Clair Region Conservation Authority's monthly Planning Activity Summary Reports for September and October, 2013.
- 11.(iv) Moved by: Seconded by:
That the Board of Directors acknowledges the update dated October 25, 2013 on the St. Clair River Area of Concern.
- 12.(i) Moved by: Seconded by:
That the Board of Directors acknowledges the revenue and expenditure report to September 30, 2013, as it relates to the budget.
- 12.(ii) Moved by: Seconded by:
That the Board of Directors approves the September 2013 disbursements as presented in the amount of \$465,836.94.
- 12.(iii) Moved by: Seconded by:
That the Board of Directors acknowledges the status report on the 2013 general levy receipts to date.
- 12.(iv) Moved by: Seconded by:
That the Board of Directors acknowledges and approves the Schedule of Fees dated October 2013, for all programs and services for the year 2014.
- 12.(v) Moved by: Seconded by:
That the Board of Directors approves the apportioning of matching and non-matching general levy to member municipalities for 2014 as per Schedule A, using the Modified Current Value Assessment, values provided by the Ministry of Natural Resources in September 2013.
- 12.(vi) Moved by: Seconded by:
That the Board of Directors acknowledges the report dated November 6, 2013 on the 2014 proposed forecast budget of \$5,471,061 with a municipal general levy of \$658,935 including finalized Modified Current Value Assessment values, updates to specific projects and municipal comments received to date.
- 12.(vii) Moved by: Seconded by:
That the Board of Directors acknowledges the October 2, 2013 meeting minutes of Health and Safety Committee.

13.(i) Moved by: Seconded by:
That the Board of Directors acknowledges the Communications Report dated October 31, 2013 including Conservation Awards, memorial forests, McLean Conservation Lands Open House, Conservation Education fundraising, , and the launch of the new SCRCA website.

13.(ii) Moved by: Seconded by:
That the Board of Directors acknowledges the Conservation Education Report, dated October 31, 2014 including education programs, events, special projects, and community partnerships.

14.(i) Moved by: Seconded by:
That the Board of Directors acknowledges the report on Drinking Water Source Protection and the potential updates to the intake protection zones and issues contributing area for the Wallaceburg Water Intake.

16. Moved by: Seconded by:
That the meeting be adjourned.

General Manager's Report 4.(i)



To: Board of Directors
Date: November 5, 2013
From: Brian McDougall, General Manager

Great Lakes Water Levels Forum

- ☞ Lambton County hosted the forum at the Holiday Inn in Point Edward on November 5th
- ☞ the forum was organized to review the options brought forward in the International Upper Great Lakes Study: Impacts on Upper Great Lakes Water Levels – St. Clair River
- ☞ the options discussed from the study included structural controls to be built in the St. Clair River and south Lake Huron, the potential for adaptive management, closing water intakes at Chicago and taking no action
- ☞ representatives from the International Joint Commission, Walpole Island First Nation, Lake Huron Centre for Coastal Conservation and Conservation Ontario, made presentations to the 100 plus attendees who represented interested parties both in Lambton County and well beyond
- ☞ the afternoon session provided attendees the opportunity to both voice their opinions and to hear, and hopefully try to understand, the opinions expressed by others
- ☞ widely varying opinions and dissention regarding some of the data presented and discussed resulted in good discussion but little consensus as to how this issue could or should be resolved
- ☞ the strongest consensus of the day was that this is a complex issue which will be discussed and studied at length for years prior to implementation

Updates

- ☞ staff continue to update the Authority's administrative manual – new and updated legislation, more efficient and more effective policies, improved clarity, documentation and organization are all being worked into the manual update that we hope to present in draft to the Board in the new year

- ☞ staffing – Michelle Fletcher, Regulations / Natural Heritage Technician has taken a new position with the Region's Source Water Protection team and is working out of the Upper Thames River CA offices – Melissa Deisley will be joining the organization later this month to fill this vacancy as a Regulations Officer – Melissa comes to us from the Ministry of Natural Resources where she was working as an inspector in the Petroleum division

**Conservation Ontario Council
Minutes from Meeting #3/13
Monday, September 30, 2013
Black Creek Pioneer Village**

Members Present:

Dick Hibma, Grey Sauble, Chair

Mark Burnham, Mississippi Valley, Vice Chair

Lin Gibson, Conservation Sudbury, Vice Chair

Allan McPhail, Cataraqui Region

Steve Knechtel, Cataraqui Region

Kim Smale, Catfish Creek

Russ Powell, Central Lake Ontario

Patricia Mullin, Credit Valley

Deb Martin-Downs, Credit Valley

Barry Rand, Crowe Valley

Ray Renaud, Essex Region

Richard Wyma, Essex Region

Forrest Rowden, Ganaraska Region

Linda Laliberte, Ganaraska Region

Jane Mitchell, Grand River

Joe Farwell, Grand River

Keith Murch, Grand River

John Cottrill, Grey Sauble

Ken Phillips, Halton

James Howlett, Hamilton

Chris Firth-Eagland, Hamilton

Rob Messervey, Kawartha

Elizabeth VanHooren, Kettle Creek

Geoffrey Dawe, Lake Simcoe Region

Gayle Wood, Lake Simcoe Region

Bill Bartley, Lakehead Region

Mervi Henttonen, Lakehead Region

Roger Geysens, Long Point Region

Cliff Evanitski, Long Point Region

Don Pearson, Lower Thames Valley

Craig Kerr, Lower Trent Region

Glenda Rodgers, Lower Trent Region

Deb Shewfelt, Maitland Valley

Phil Beard, Maitland Valley

John Karau, Mississippi Valley

Paul Lehman, Mississippi Valley

Brian Tayler, North Bay-Mattawa

Nina Bifolchi, Nottawasaga Valley

Wayne Wilson, Nottawasaga Valley

Allan Seabrooke, Otonabee

Janice Maynard, Quinte

Terry Murphy, Quinte

Alton Blair, Raisin Region

Roger Houde, Raisin Region

Sommer Casgrain-Robertson, Rideau Valley

Wayne Brohman, Saugeen

William Smirle, South Nation

Doug Thompson, South Nation

Steve Arnold, St. Clair Region

Terry Burrell, St. Clair Region

Brian McDougall, St. Clair Region

Brian Denney, Toronto and Region

Jane McKelvie, Upper Thames River

Members Absent:

Ausable Bayfield

Mattagami

Niagara Peninsula

Quinte

Sault Ste Marie

Guests:

Lisa Burnside, Hamilton

Brian Kemp, Lake Simcoe Region

Angela Coleman, South Nation

Jeff Brick, Upper Thames River

Ray Croteau, Fast Flowing Water Program

Dan Marinigh, Ministry of Water Resources

Staff:

Kim Gavine, General Manager

Jayne Crittenden

Jane Dunning

Samantha Dupre

Bonnie Fox

Cameron Hare

Erin Harkins

Jane Lewington

Jo-Anne Rzadki

Mike Walters

Rick Wilson

1. Welcome from the Chair

Chair Dick Hibma called the meeting to order.

Linda Whalen is retiring from the Sault Ste Marie Conservation Authority. Rhonda Bateman is the new General Manager, effective October 1, 2013.

Pat Mullin (Credit Valley Conservation chairperson) introduced Deb Martin Downs, CAO/Secretary-Treasurer.

Mark Burnham (Mississippi Valley) introduced Sommer Casgrain-Robertson, General Manager of the Rideau Valley CA.

The following Conservation Ontario staff were introduced:

Rick Wilson, WRIP Coordinator and Cameron Hare, GIS Web Development Specialist.

2. Adoption of the Agenda

#21/13 Moved by: Mark Burnham Seconded by: Bill Smirle

THAT the agenda be adopted as amended.

CARRIED

3. Declaration of Conflict of Interest

There was none.

4. Approval of the Minutes of the Previous Meeting

#22/13 Moved by: Forrest Rowden Seconded by: Bill Bartley

THAT the Minutes for the meeting #02/13, June 24, 2013 be approved as amended.

CARRIED

5. Business Arising from the Minutes

There was none.

6. Motion to move from Full Council to Committee of the Whole

#23/13 Moved by: Ray Renaud Seconded by: Mark Burnham

THAT the meeting now move from Full Council to Committee of the Whole.

CARRIED

7. Committee of the Whole - Items for Decision

1) Conservation Ontario 2014 Workplan

Kim highlighted the proposed Workplan.

Rob Messervey (Kawartha) suggested the inclusion of a marketing/communications strategy addressing re-election scenarios. Despite progress there still seems to be misperceptions about our core mandate.

C.W. #21/13 Moved by: Don Pearson Seconded by: John Cottrill

THAT Council adopt the proposed 2014 workplan as a basis for approving the 2014 operating budget.

CARRIED

2) Proposed 2014 Operating Budget and CA Levy

C.W. #22/13 Moved by: Mark Burnham Seconded by: Steve Arnold

THAT Council adopt the 2014 draft Operating Budget as presented.

THAT the general levy of \$1,043,000 be approved and apportioned in accordance with the attached schedule.

CARRIED

3) A Business Case for Strategic Investment in Ontario's Flood Management Programs and Services – Dodging the Perfect Storm

Kim and Mike highlighted the report provided in the agenda. Their slides are attached.

CO staff had a positive meeting with representatives from the insurance industry, who are supportive of the business plan, and are considering financial support to support updating flood plain mapping.

Pat Mullin (CVC) stressed the importance of showcasing examples of Low Impact Development and other low cost projects that will simply demonstrate to our federal and provincial partners the value of flood management activities.

Rob Messervey (Kawartha) referenced the former Flood Damage Reduction Program (FDRP) which had 50% Federal/40% Provincial/10% Municipal funding model. A reference to this partnership in floodplain mapping might be helpful.

Brian Denney (TRCA) cautioned that much of this statistical analysis is based on weather we have known for the past 100 years, that there is potential for a fairly fundamental shift in the

science that drives this analysis, and it was hoped that the Province would help on the high end analysis of how frequently these extreme events are happening.

Deb Martin-Downs (CVC) added that the MNR technical guidelines on how flood plain mapping is generated needs updating as well.

C.W. #23/13 Moved by: Rob Messervey Seconded by: Mark Burnham

THAT Conservation Council endorse the proposed business case entitled "Dodging the 'Perfect Storm' Conservation Ontario's Business Case for Strategic Reinvestment in Ontario's Flood Management Programs, Services, and Structures", and that staff be directed to continue to implement the interim strategy to mobilize support to advance reinvestment in flood management programs within Conservation Authorities and solicit new funding partners.

CARRIED

4) Conservation Ontario's submission to the New Municipal Infrastructure Program – Small Rural and Northern Municipalities

Bonnie Fox (CO) highlighted the report provided in the agenda. CAs were reminded that they would still apply for WECl funding and through that process they would get expert feedback from the committee on their infrastructure.

Terry Murphy (Quinte) reported that their CA is encouraging municipalities to submit their CA infrastructure (includes 39 dams) as part of their municipal applications.

C.W. #24/13 Moved by: Mark Burnham Seconded by: Jim Howlett

THAT Conservation Ontario endorse the submission dated August 23, 2013 entitled 'New Municipal Infrastructure Program – Small Rural and Northern Municipalities: Support for Water and Erosion Control Infrastructure as Critical Infrastructure.'

CARRIED

5) Ontario Not for Profit Corporations Act (ONCA)

Kim Gavine highlighted the staff report.

Mervi Henttonen (Lakehead Region) cautioned that their solicitor pointed out that with the passing of this legislation, the requirement under the CA Act to have per diems approved by the OMB cannot be ignored.

Don Pearson (Lower Thames) noted that there will be a need for this by-law to complement the administration regulation which is approved by Minister (pursuant to section 30). We will need to persuade MNR that it is in their interest and is their responsibility to be engaged.

C.W. #25/13 Moved by: Steve Arnold Seconded by: Roger Geysens

THAT Council endorse a working committee comprised of Kim Gavine (Conservation Ontario), Don Pearson (Lower Thames River Conservation Authority), Richard Wyma (Essex Region Conservation Authority), Keith Murch (Grand River Conservation Authority) and Rocco Sgambelluri (Toronto and Region Conservation Authority) to provide a set of model by-laws/templates for Conservation Authorities to comply with the Ontario Not-for-Profit Corporation Act.

CARRIED

6) Decision on Next Steps Regarding DFO Relationship

John Karau (Mississippi) suggested that we need to look at other partnerships and agencies if fish habitat management is to be a priority in integrated watershed management.

Bonnie highlighted the report provided in the agenda emphasizing that the proposed protocol between DFO and Conservation Ontario would be focused on maintaining communications, in part, for clarity in services provided to local clients in plan review and CA permitting programs. Given that the new Fisheries Protection program (once in place) will be a proponent self-assessment framework, individual agreements between CAs and DFO focused on regulatory aspects does not appear to make business sense. It is anticipated that CAs would be providing technical advice on fisheries under the Planning Act (as we have done in the past), and would be able to apply a service fee for those proponents that are perplexed as to how to do the self screening. All this detail is still evolving.

C.W. #26/13 Moved by: Jane McKelvie Seconded by: Mark Burnham

THAT the CO–DFO partnership agreement working group continue to develop a protocol/memorandum of understanding (MOU) between CO and DFO for presentation to Council in April 2014.

CARRIED

7) Great Lakes Items:

a) Conservation Ontario's Submission on the Lake Ontario St. Lawrence River Plan 2014

C.W. #27/13 Moved by: Rob Messervey Seconded by: Ray Renaud

THAT the August 30, 2013 letter to the International Joint Commission RE: Conservation Ontario's Additional Comments and Information to Support the IJC's 'Proposal for Lake Ontario and St. Lawrence River Regulation', be endorsed.

CARRIED

b) Great Lakes Water Quality Agreement Update and Endorsement of Climate Change Annex 9 Subcommittee Representative and Nutrients Annex 4 Task Team Members

C.W. #28/13 Moved by: Mark Burnham Seconded by: Lin Gibson

THAT Bonnie Fox (Conservation Ontario) be endorsed to represent Conservation Ontario on the Climate Change Annex Binational Sub-committee;

AND THAT Sandra Cooke (Grand River CA), Karen Maaskant (Upper Thames River CA), Samantha Dupre (Conservation Ontario) and Chitra Gowda (Essex Region CA) be endorsed as Conservation Ontario representatives for the GLWQA Annex 4 Task Groups related to Phosphorous Objectives Development, Agricultural Programs, Urban and Rural Municipal Programs and Extended Tasks, respectively.

CARRIED

c) Update and Endorsement of Submission to the International Joint Commission (IJC) re: Restructuring of the Water Quality and Science Advisory Boards

Bonnie reported that for the Water Quality Board, a watershed management agency seat has been created, and they are looking for water quality program experience. Two interested parties have applied from the South-West, 1 from the East and 2 from the Central/Greater Golden Horseshoe area. IJC has asked that we get as many applications in as possible to that they can ensure that they have geographic representation and experience at the table. Members were encouraged to look for the email regarding the Water Quality Board.

The Science Advisory Board, which advises the Water Quality Board, is a research oriented board. Applicants should hold a PhD or Masters degree. So far interest has been indicated from the South-West (2) and from Central/Greater Golden Horseshoe (1).

Bill Bartley (Lakehead) indicated that their Board endorsed the application of one of their Board members.

Chair Hibma reminded members that the conservation authorities are held in very high regard by Environment Canada, Fisheries and Oceans Canada and the International Joint Commission. They recognize that CAs have the knowledge, expertise and skills to manage integrated watersheds and these are critical opportunities to demonstrate and reinforce the capabilities, expertise and value of CAs.

C.W. #29/13 Moved by: Bill Bartley Seconded by: Steve Arnold

THAT the July 22nd, 2013 letter to the International Joint Commission Re: Conservation Ontario's Comments for the IJC's Proposed Great Lakes Advisory Boards Under the 2012 Great Lakes Water Quality Agreement, be endorsed.

AND THAT the Conservation Ontario Council members and CO staff encourage individuals, as water quality managers and/or watershed based science experts, to apply for a position on the Water Quality Board or the Science Advisory Board.

CARRIED

8) Conservation Ontario's Comments on the Invasive Species Discussion Paper (EBR # 011-9780)

Jo-Anne reported that MNR has acknowledged receipt of the comments; they are appreciative of the comments and will engage CO and CA staff on future actions.

C.W. #30/13 Moved by: Mark Burnham Seconded by: Forrest Rowden

THAT the comments submitted to the Ministry of Natural Resources on September 5th, 2013 in response to the "Invasive Species Discussion Paper" (EBR # 011-9780) be endorsed.

CARRIED

9) Request for Proposal for General Insurance Program Brokers

Keith Murch (CO General Insurance and Group Benefits Committee) highlighted the staff report and reviewed the insurance broker duties and recent RFP process.

The recommendation is subject to the insurance committee's approval of a suitable service agreement with the broker, which is expected to include a 5 year agreement with opportunities for us to cancel the agreement if there are service problems.

C.W. #31/13 Moved by: Jane Mitchell Seconded by: Mark Burnham

WHEREAS Conservation Ontario has appointed the Conservation Ontario Group Insurance and Benefits Committee (the insurance committee) to organize and provide for a system of insurance coverage for provincial conservation authorities and Conservation Ontario;

AND WHEREAS Conservation Ontario has approved Terms of Reference for the insurance Committee;

AND WHEREAS those Terms of Reference state that "the insurance Committee may, from time to time, seek proposals and retain insurance brokers to oversee the administration of the Conservation Ontario insurance programs";

AND WHEREAS the insurance committee has completed a Request for Proposals (RFP) for general insurance brokers and has made a decision to appoint a broker as a result of the RFP;

BE IT RESOLVED THAT Conservation Ontario supports the decision of the insurance committee to appoint Marsh as the broker for the general insurance program, subject to the insurance committee's approval of a suitable service agreement with the broker.

CARRIED

10) DRAFT Post 2013 SWP Funding Report (CO Proposal to MOE for Transition Period 2014-2015)

It was noted that a revised Table 10 (page 105 of the agenda package) has been provided in hard copy at the meeting and is included in the presentation attached to the minutes of the meeting.

Mike Walters highlighted the staff report. As this will be a transition year, the Ministry has suggested that 2014-15 funding will be same as in the past.

Rob Messervey (Kawartha) reported that at the recent Joint Advisory Committee meeting, MOE was asked to consider stewardship funding as part of their business plan going up to senior management. Mike confirmed that the CO office is continuing to encourage the MOE to support stewardship activities as part of the SWP program going forward.

C.W. #32/13 Moved by: Allan McPhail Seconded by: Geoffrey Dawe

THAT the proposed funding model be endorsed as Conservation Ontario's proposal to the Ministry of Environment for Conservation Authority source protection transition funding for the 2014-15 fiscal year. Further that a new business model be developed to address Source Protection Implementation activities post 2015.

CARRIED

11) Proposal to Revise Conservation Ontario's Guide to Conservation Areas in Ontario

Jayne Crittenden reported that already one advertisement has been secured and that further advertisements will bring the costs down for CAs to purchase copies for distribution.

C.W. #33/13 Moved by: Ray Renaud Seconded by: Don Pearson

THAT Conservation Ontario proceed to update and reprint 100,000 copies of the Guide to Conservation Areas in Ontario.

CARRIED

8. Program Updates

1) Source Water Protection

There were no updates to the report provided with the agenda.

2) Marketing and Communications

Deb Martin-Downs (CVC), Chair of A.D. Latornell Conservation Symposium reminded members that early bird registration goes until October 7 and she highlighted the program which can be found on line. Silent Auction items are still needed, the proceeds of which go the Grant program. The 20th anniversary checkup has resulted in the new Latornell mentoring program and Deb encouraged members to avail themselves to the mentorship opportunities at the symposium.

3) Watershed Stewardship

Jo-Anne Rzakki reported that northern CAs will notice potential funding for tree planting in the near future.

9. Presentations

1) Conservation Sudbury Fast Flow Water Safety Program Introduction

Lin Gibson (Conservation Sudbury) introduced Ray Croteau, spokesperson for the Fast Flow Program. Ray, who is the grandfather to Adam Dickie (who tragically drowned in Junction Creek on August 25, 2007) provided background to this program. A more detailed presentation is scheduled for the December meeting.

2) Essex Region Conservation Authority Sustainability Plan: A Way Forward

Richard Wyma's presentation is attached to the minutes.

3) Ministry of Natural Resources (MNR) Modernization of Approvals and Recent Regulatory Amendments to the Public Lands Act

Dan Marinigh's (Director of Integration Branch, Ministry of Natural Resources) presentation is attached to the minutes.

10. Committee of the Whole – Items for Information

1) General Manager's Report

Kim highlighted the staff report.

A question was asked of Dan Marinigh (MNR) regarding the reporting of Section 39 funding which has historically been done following the CA's fiscal year but is now required to follow

the government's fiscal calendar. CAs operate on a calendar year and their audits are conducted on the same calendar basis. Dan clarified that both the operating and WECl grants (transfer payments included) are made on a provincial fiscal year and as a result of an internal audit it has been pointed out that MNR has not been compliant under the transfer payment directive. MNR agreed to ask for certain things to demonstrate a paper trail. In addition, the ministry will require proof of insurance from the CAs on an annual basis. While this is a change in practice, these changes will ensure that the record is transparent and defensible from a provincial directive perspective.

2) Budget Status Report to August 31, 2013

C.W. #34/13 Moved by: Mark Burnham Seconded by: Rob Messervey

THAT the Budget Status Report to August 31, 2013 be received.

CARRIED

3) Advancing Conservation Authorities in a Changing Economy

Jo-Anne drew attention to the literature review on Market Based Instruments. CA staff will be notified when this report will be posted on the CO website.

Jo-Anne also highlighted Blair Feltmate and Jason Thistlewaite's report *Assessing the Viability of Overland Flood Insurance: The Canadian Residential Market*, including messages that align with the CO Flood Management Business Case (e.g., updated data and flood plain mapping and investments in infrastructure) the link to which can be found in the staff report and Council Members page.

4) Environmental Systems Research Institute (ESRI) Enterprise License Agreement (ELA) Renewal

There were no updates to the report provided with the agenda.

5) Watershed Report Card Project Update

Jane Lewington summarized the results from a recent survey of the CAs asking for their response to the Watershed Report Card Project (presentation slides attached). Niagara Peninsula and St. Clair Region CAs have plans to release a report card in 2013. Lakehead Region reported that they also hope to include one as part of their 2013 Annual report.

6) Climate Change Update

Jo-Anne emphasized CO activities like recent development and promotion of investment in Flood Management activities, Great Lakes initiatives are also advancing areas of interest for CAs under climate change and green economy, IWM.

7) Provincial Stream Water Quality Monitoring Network (PWQMN) and Provincial Groundwater Monitoring Network (PGMN) Canada Ontario Agreement (COA) Climate Change Project

There were no updates to the report provided with the agenda.

8) Update on the Accessibility for Ontarians with Disabilities Act

There were no updates to the report provided with the agenda.

9) CA Boundary Project Update

There were no updates to the report provided with the agenda.

10) Project Tracking

There were no updates or questions regarding the Project Tracking document.

11) Correspondence

- Letter from MNR re: Herbicide 2,4,5-T
- Deputy Minister of Natural Resources to Conservation Ontario re: Reorganization of science functions

11. Motion to Move from Committee of the Whole to Full Council

#24/13 Moved by: Bill Smirle Seconded by: Forrest Rowden

THAT the meeting now move from Committee of the Whole to Full Council.

CARRIED

12. Council Business - Council Adoption of Recommendations

#25/13 Moved by: Rob Messervey Seconded by: Mark Burnham

***THAT Conservation Ontario Council adopt Committee of the Whole (C.W.) Recommendations:
C.W. #21/13 to C.W. #34/13.***

CARRIED

13. New Business

There was none.

14. Adjourn

#26/13 Moved by: Mark Burnham

THAT the meeting be adjourned.

CARRIED



How Can We Respond?

- Ensure up to date, accurate flood plain mapping
- Increase rainfall and stream flow monitoring
- Update computer models to forecast stream flows
- Address aging infrastructure (dams, dykes, etc)
- Support
 - Green Infrastructure (Low Impact Development)
 - Stormwater Management
 - Watershed Stewardship / Conservation Practices

Commitment Required

- Immediate:
 - Floodplain mapping & streamflow monitoring systems, computer models (\$24M)
- Ongoing:
 - Flood management programs (\$50.7M /annually)
 - Infrastructure maintenance, repair & replacement (\$27M /annually)
 - Policy and program support for complementary activities to manage runoff, water quality, etc. as result of floods

Staff Report

6.(i)



To: Board of Directors
Date: November 1, 2013
From: Marlene Dorrestyn
Subject: Business Arising from September 19, 2013 meeting

1. 2012 Conservation Ontario Statistical Survey - requested better clarification on the numbers and more detail – *see 6.(ii)*
2. Staff to make presentation on best management practises for drain maintenance at a future meeting – *scheduled for the November Board Meeting*. It was also requested that the information be given soon, so it can be included in zoning bylaws – this information is being provided to drainage superintendents and other municipal staff as municipal bylaws are being updated. – *working on for December meeting*
3. Talk to municipality regarding selling McKeough properties - *on going*
4. Sarnia representative requested that a reminder be sent to the City of Sarnia regarding levy payments – *completed by phone*
5. Requested that the municipal treasurers be contacted regarding their Investment policies – *on going*

Staff Report

6. (ii)



To: Board of Directors
Date: October 31, 2013
From: Rick Battson
Subject: 2012 Conservation Ontario Survey Summary

- ❖ Staff was asked to provide more explanation as to the significance of the various rankings
- ❖ In interpreting the rankings, it is important to note that there is considerable variation in the programs and services provided by Conservation Authorities across the province. This is due in part by size and capability but it also is a reflection of the priorities set out by the board of directors determined by the needs of the local municipalities.

Administration			
Category	Number	Rank (1–36)	Comment
Population	171,966	14	We used the 14 th ranked level for this measure as a benchmark from which to compare other measures
Area	4,100 km ²	9	We are larger in size than the benchmark- this is due to the rural nature of our region
Full Time Staff Compliment	28	15	Consistent with benchmark
Number of members of the Board of Directors	20	6	We have a large number of members of the board considering our population – this has an advantage in ensuring we have a broad base of support across the region but does involve additional costs
Total Revenue	\$4,998,880	12	Ranks slightly above benchmark – mostly attributed to self-generated revenue
General Levy	\$593,691	32	Ranks very low considering our benchmark – compared with the rest of the province, our member municipalities are “getting a great deal”

Administration (continued)			
Per-capita General Levy	\$3.45	35	as above
Section 39 Provincial Grant	\$310,000	5	this is our only on-going grant toward regular operation and it has not increased since 1996 - \$310,000 – this adds pressure on other funding and programs as costs for core programs continue to rise although in terms of the rest of province, this still measures well above our benchmark
Federal Grants	\$467,225	5	We have been very successful compared to our benchmark
Self-generated Revenue	\$1,912,281	10	We have been very successful compared to our benchmark

Programs and Services			
Category	Number	Rank (1–36)	Comment
Conservation Areas	16	10	This shows we have provided recreation opportunities above our benchmark through purchase and or receipt of donated lands for the benefit of the public
Campsites	522	6	This indicates that we have provided camping opportunities in our region well above the benchmark. This helps bring tourist dollars into the region and helps support our other lands projects and programs
Total length of trails	43	20	We are below our benchmark for trails. We have focused on improving the trails we have to improve access and continue to work with other organizations (i.e. County of Lambton) to provide trail opportunities
Students to education programs	11,267	5	We are well above our benchmark for this measure. This is attributed to our efforts to seek sponsorships to allow us to expand the program into the schools from November – April free of charge to the students

Programs and Services (continued)

Municipal plan input transactions	84	29	We are well below the benchmark for this measure. We did not include “no comment” type responses although screening /background work by CA staff still completed. We need to check with Conservation Ontario to see if this is consistent with others .
Section28 Regulations inquiries	238	14	We are at benchmark
Section28 Permits issued	85	27	This is well below benchmark and shows the effort of staff to negotiate with landowners to avoid the permit process (i.e to adjust plans to allow development outside of regulated areas.
Level II DFO drain reviews completed	281	1	This is nearly double the second place CA (156). This reflects the large number of drains in our region and agriculture as the predominant land use
Benthic sampling sites	14	20	We are below benchmark, but the number of sites are based on our needs for watershed reporting and it is felt this is sufficient
Trees planted	73,500	16	We are slightly below benchmark for this program
Grants provided to landowners for BMPs	\$63,346	11	We are above benchmark for grants to landowners. This is due to our efforts to apply to various funders to support BMPs and engage landowners throughout the region.

Staff Report

7.(i)



To: Board of Directors
Date: October 28, 2013
From: Kevan Baker, Director of Lands
Subject: Conservation Lands Update

Background:

- the Conservation Authority owns 15 conservation areas in the watershed
- of those 15 conservation areas, 6 are managed by the local municipality and 9 are operated by the Conservation Authority
- of these 9, 3 conservation areas are regional campgrounds which attract campers from primarily Southwestern Ontario
- profits obtained from our campgrounds are used to offset capital improvements

Warwick Conservation Area (Warwick Township):

- new ceramic tiles have been installed in the women's main washroom shower areas
- approach ramps with railings have been installed on the main trail bridge
- hydro servicing has been installed to 2 group camp areas
- one canoe rack and 2 viewing platforms have been constructed
- a new steel roof has been installed on the gatehouse
- a number of dead ash trees have been removed and approximately 70 stumps ground out and top soil placed



L.C. Henderson Conservation Area (Enniskillen Township):

- new ceramic tiles have been installed on the main campground washroom floors
- septic system & dump station has been completed
- barn board siding has been replaced on the main washroom building
- a canoe and fishing dock has been constructed and installed in the main reservoir
- road culvert in South Park camping loop has been replaced
- a new steel roof has been installed on the gatehouse
- campsites have been aerated and seeded
- a number of tree stumps have been removed, filled with top soil and seeded



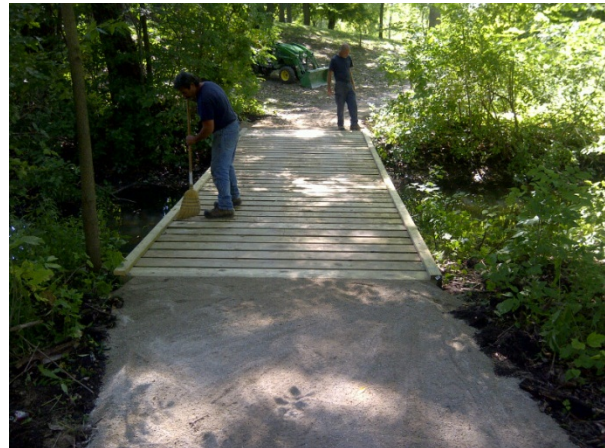
A.W. Campbell Conservation Area
(Brooke/Alvinston & S.W. Middlesex Townships):

- 9 new windows have been installed in the visitor center
- new steel doors have been installed on the pool washroom building
- 30 large stock & 100 seedling trees have been planted
- trails have been widened and surfaced with chip and dust
- campsites have been aerated and seeded
- a number of tree stumps have been removed, filled with top soil and seeded



Strathroy & Clark Wright Conservation Areas:

- 2 trail bridges have been upgraded
- 10 board walk sections have been replaced
- at Clark Wright trail improvements include the installation of a 36' railed bridge and the addition or replacement of approximately 18 board walk sections
- above projects have been funded by the Foundation



Peers Wetland Conservation Area:

- wetland rehabilitation has been completed. This included berm reconstruction and seeding, pump and electrical installation, security fence construction, trail establishment, and parking lot construction.
- other improvements include: 5 acres of trees planted; 1.2 acres of tall grass prairie planted; and the installation of property and donor signage
- a draft master plan has been completed

C.J. McEwen Conservation Areas (Plympton/Wyoming):

- a new steel roof to be installed on the washroom building this fall (steel has been purchased and project to be completed before the end of November)
- a number of dead trees to be removed at both McEwen and Highland Glen Conservation Areas

Coldstream Conservation Area:

- approximately 17 sections of boardwalks have been repaired with new cedar upright posts

Lambton County Lands:

- the Conservation Authority manages 7 properties (approximately 1,400 acres) for the County of Lambton.
- at the Lambton County Heritage Forest, staff have repaired the fence on the sand hill and installed two trail signs. Forestry staff has performed a forest inventory of the property to determine standing timber values.
- at Perch Creek Habitat Area, the main trail has been widened and trees and vegetation have been trimmed back. Low areas along the main trail have been raised and 2 culverts installed to provide better access
- at Marthaville, staff have maintained and widened the trail system and will be removing approximately 6 dead ash trees along the north side of the parking lot.
- at Bowens Creek, the Forestry department planted 14,000 trees this spring and managed the plantations on site for the year.

McKeough Lands:

- soil erosion improvement works have been completed on Property 93, 95, 97 (wetland constructed) and 103 (subsurface drainage installed)



Kelly Smith (Biological Technician):

- to date Environmental Farm Plans have been completed for 11 of the agricultural parcels and 2 parcels have had Property Management Plans completed.
- Environmental Farm Plans are designed to prepare environmental risk assessments for the farm rental properties while highlighting industry standards, regulatory obligations, and best management stewardship practices. The goal of the plans, in addition to meeting the industry standards and regulatory obligations of farming practices, is to obtain the best stewardship practices and implement the best management practices above and beyond to achieve environmentally sustainable farming practices on our lands.
- Property Management Plans are designed to highlight the property description, historical use, farming practices, forest management, soil and water management and other key features of the property while addressing environmental risks through best management practices, like riparian planting along watercourses and installing erosion control structures.
- an application to Wildlife Habitat Canada has been submitted to develop and enhance wetlands on the McKeough lands. Ducks Unlimited Canada and Ministry of Natural Resources Species at Risk Stewardship fund are partners in this proposed project.

Staff Report

7.(ii)



To: Board of Directors
Date: October 29, 2013
From: Kevan Baker, Director of Lands
Subject: Camper Activities and Events in 2013

- our campgrounds are very fortunate to have a group of dedicated volunteers who assist staff in delivering the many events and activities throughout the camping season
- below are some of the events and activities which were offered in 2013

Regular Events:

- bingo/ wagon rides/ kids train rides
- pot lucks dinners/bagel breakfasts/barbeques
- horse shoe tournaments/yard sales
- golf cart parades/poker runs/ cart show and shines
- kids crafts/card nights/car washes
- camper fundraiser breakfasts
- canoe races
- slip and slide down the Campbell Hill (*seen below*)
- teen dances
- movie nights



Special Events:

- Canada Day Events and fireworks
- Christmas in the Park/Halloween in the Park with haunted house
- fish fry/pig roast/chili cook-off
- fishing derby
- kid's rubber duck race/putt putt golf tournament
- antique car show/antique fire truck ride
- Elvis returned to the Warwick CA on Elvis Day, day also included a malt shop, barbeque, train rides and more
- geo-caching event
- car wash fund raiser/face painting
- CMT award winner Crystal Gage performed at AW Campbell on Canada Day Weekend (event sponsored by a seasonal camper)
- Brett Baker, country and western singer appeared at LC Henderson on the Civic Long Weekend (Friends of Henderson sponsored the event)

All camper fundraising efforts are approved and monitored by Authority staff and funds raised are used to sponsor events, activities or develop facilities within the conservation area.



Staff Report

8.(i)



To: SCRCA Board of Directors
 Date: November 4, 2013
 From: Steve Clark, Water Resources\SWP Data Technician
 Subject: Current Watershed Conditions and Flood Threat

Watershed Precipitation and Streamflow Conditions

Highlights:

- normal seasonal flows across the watershed
- higher precipitation amounts in the upper reaches
- lake levels returning to close to the 10 year average
- recent urban flood overview (Calgary and Toronto)

Precipitation events through September and October, in some cases in excess of 100mm (4 inches) accumulating over short periods, have resulted in significant rainfalls in the upper reaches of the Sydenham River, notably in the Strathroy area and beyond into the London area watersheds. In contrast, the remainder of the watershed has received less than normal for this period, however the quarterly average remains close to normal at **103%** (fig 2). The six month and yearly totals for 2013 remain ahead of the average at **127%** and **116%** respectively. The precipitation and resulting flow conditions (fig 1) have impacted on the existing lower seasonal flow patterns increasing during the event periods but conditions returned to normal flows fairly quickly. Rain distribution, while not as significant as other watersheds to the north-east, has been fairly consistent over the September and October period in our watershed. Water levels throughout October remain at or near seasonal means for most gauging stations in the watershed (fig 3).

Fig 1. Precipitation and Flow Comparison by Station – (August to October 2013) SCRCA data.

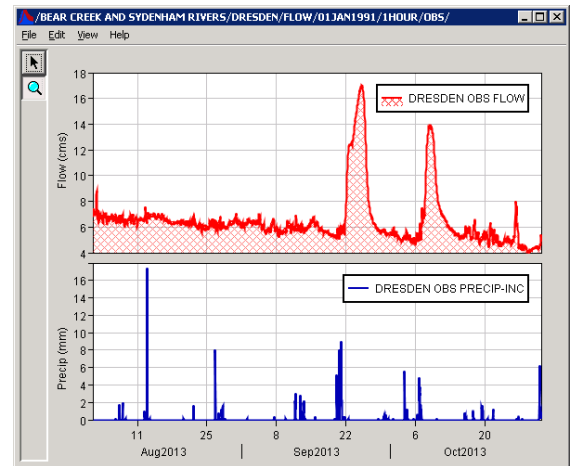
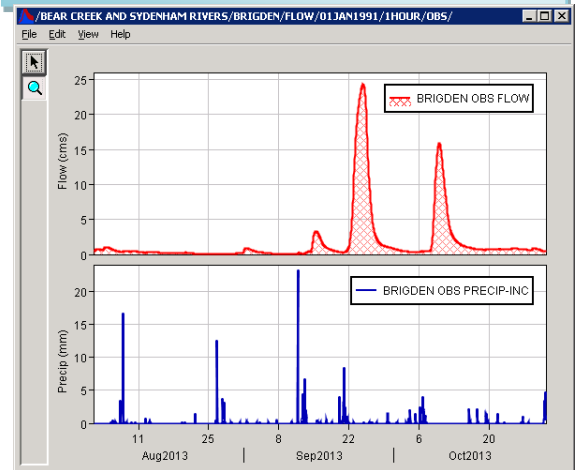


Fig 2. Regional Precipitation – (Source: Environment Canada – Canadian Climate Data Averages) 1971-2013)

Precipitation (mm)	Sarnia		Strathroy		London		Windsor	
	Actual 2011	Normal	Actual 2011	Normal	Actual 2011	Normal	Actual 2011	Normal
Last Quarter								
October	51	66	104	70.8	155	77.6	82	64.9
September	78	94	189	89.8	112	97.7	54	96.2
August	42	77.1	63	82.1	41	85.3	48	79.7
Averages								
last 3 month totals	171	237.1	356	242.7	308	260.6	184	240.8
last 3 month % of normal	72.1%		146.7%		118.2%		76.4%	
regional average	103.4%							
Averages								
last 6 month totals	549.1	466.6	653.2	462.9	601.1	512.5	665.4	493.2
last 6 month % of normal	117.7%		141.1%		117.3%		134.9%	
regional average	127.7%							
Averages								
last 12 month totals	1043.2	846.8	1150.6	945.1	1004.3	987	1087.2	918.4
last 12 month % of normal	123.2%		121.7%		101.8%		118.4%	
regional average	116.3%							



Fig 3. Flow Comparison by Station – (October 2013) SCRCA data.

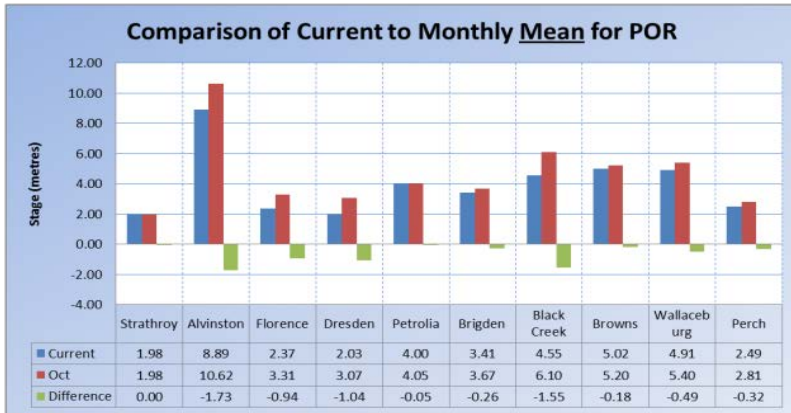


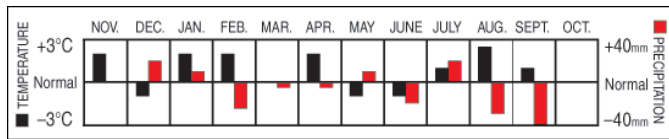
Fig 4. Precipitation – Actual 2013 to Date as % of Normal (Source: Environment Canada)

2013 Year to date	Sarnia	Strathroy	London	Windsor
Rain Received YTD (mm)	934	1034	913	992
Normal YTD (mm)	702.4	758.2	807.3	768.2
Percent of Normal YTD	133%	136%	113%	129%
Normal Total for Year	846	945	987	918
Percentage of Normal Yearly Total Received to Date	110%	109%	92%	108%

Weather Forecast (Weather Network, Environment Canada)

- | | |
|-----------------|--|
| December | <ul style="list-style-type: none"> Slightly below average temperatures with above average precipitation in the form of snow mid-month (70% chance of white Christmas) |
| Fall and Winter | <ul style="list-style-type: none"> Temperatures will be near normal with normal precipitation into the winter months |

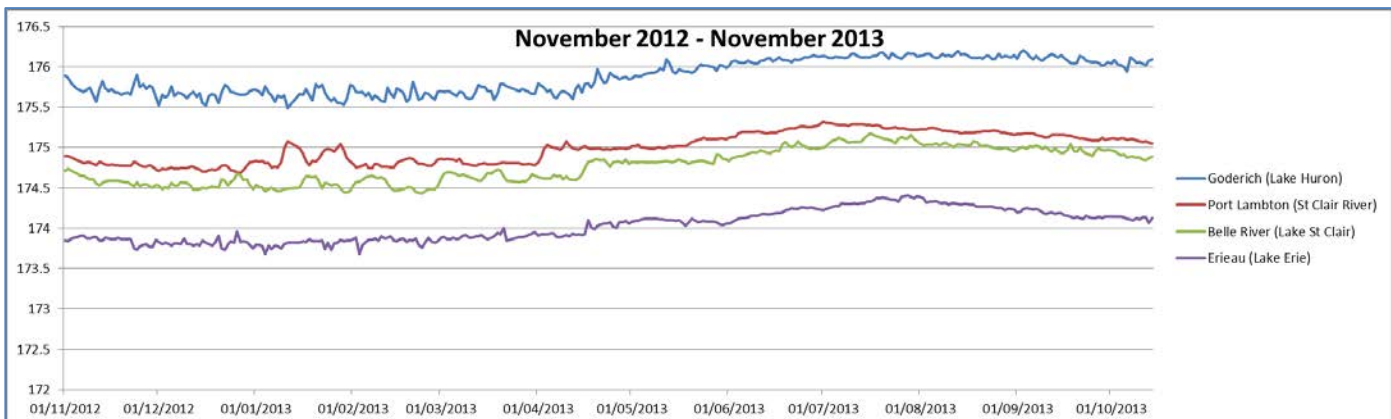
12 Month Outlook



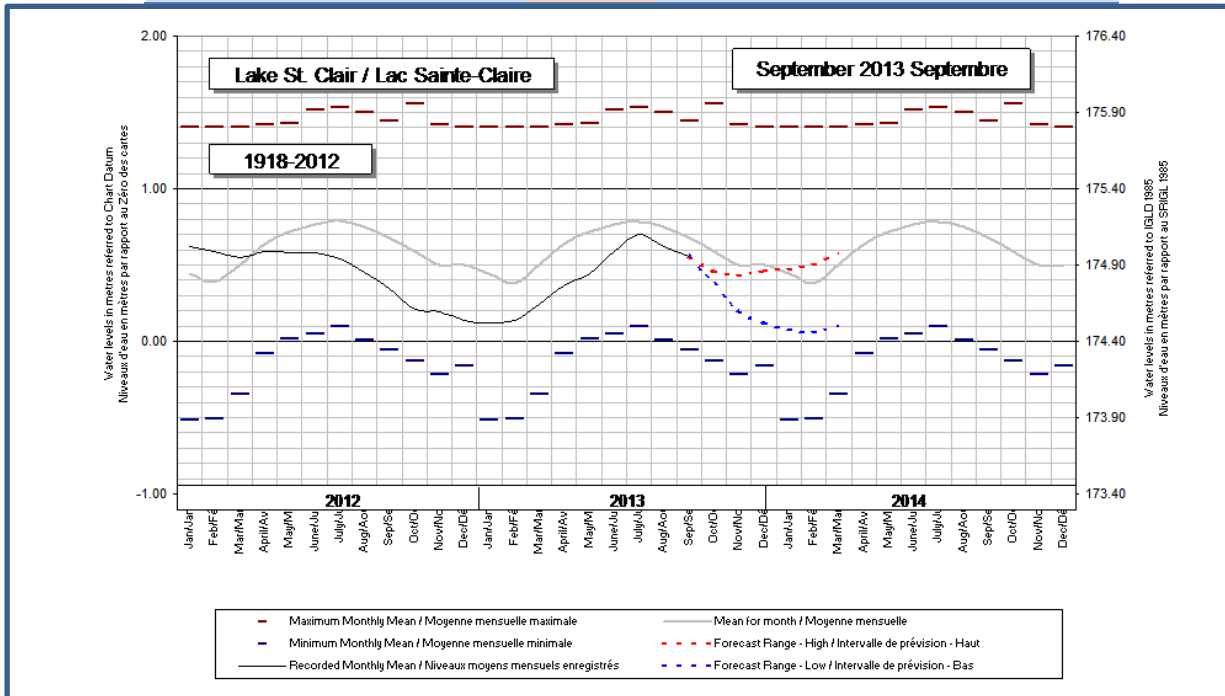
Great Lakes Levels

Lake Huron levels continue to improve over last year increasing by **18 cm** (0.59 ft.) but remain slightly below the 10 year average **-6cm** (0.2 ft.). Figure 5 identifies the upward trend following the low levels of 2012 at four monitoring stations (Lake Huron, St Clair River, Lake St. Clair and Lake Erie) over the past year. As each station receives flow from the previous water body the relative impact on levels are identified downstream from Lake Huron to Lake Erie.

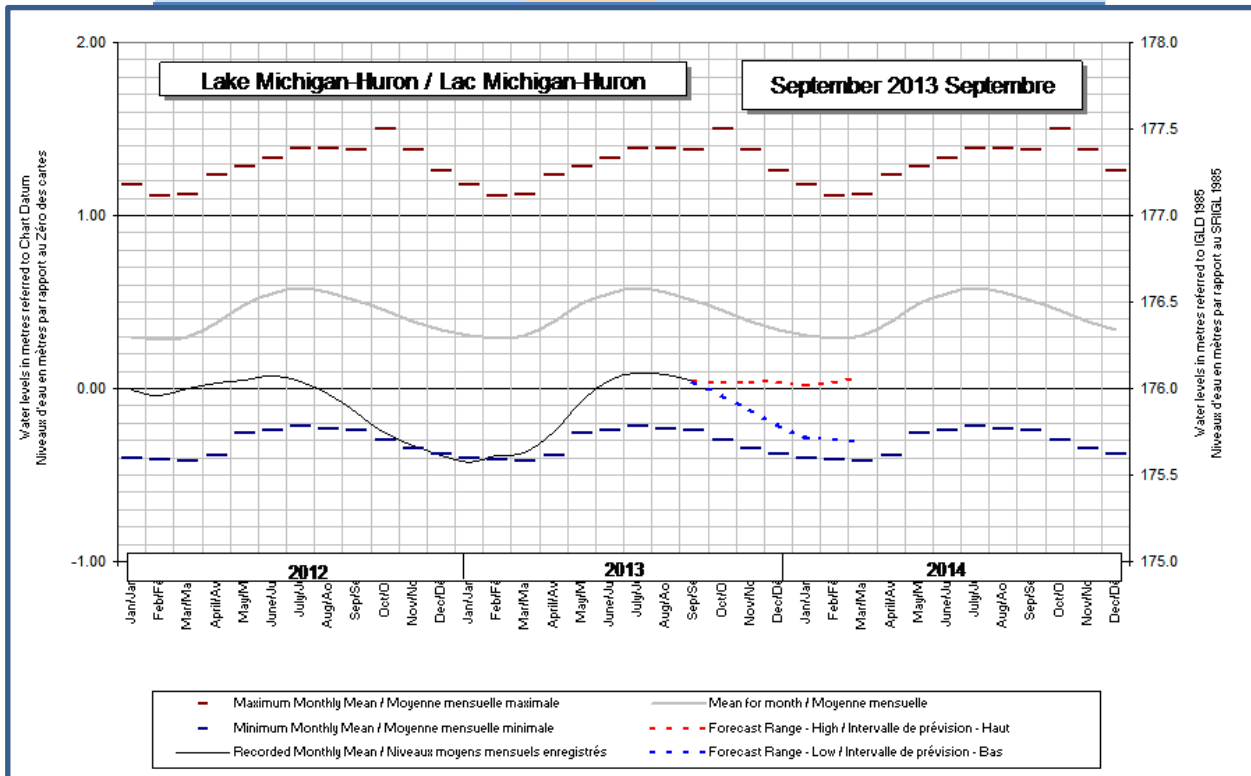
Fig 5. Lake level comparison by Station – (October 2013) SCRCA data.



Lake St. Clair						
Units	Current Monthly Level	Monthly Level Last Year	Change 2012/2013	Current Month Average for Last 10 Years	Change Current compared to 10 year	Anticipated Next Month
Metric (m)	174.96	174.75	0.21	174.94	0.02	174.82
Imperial (ft)	574.01	573.33	0.69	573.95	0.07	573.55



Lake Huron						
Units	Current Monthly Level	Monthly Level Last Year	Change 2012/2013	Current Month Average for Last 10 Years	Change Current compared to 10 year	Anticipated Next Month
Metric (m)	176.04	175.86	0.18	176.1	-0.06	176.00
Imperial (ft)	577.56	576.97	0.59	577.75	-0.20	577.43



Overview of the Calgary and Toronto Flood Events

Two major flood urban flood events occurred in 2013 which emphasized the many issues of riverine flooding in major developed areas. Both situations resulted from a number of significant factors including the amount and intensity of rainfall, the existing seasonal conditions and the presence of an urban environment.

Calgary Event

Between June 19th and 22nd a large low pressure system brought between 80 and 280 mm to the upper reaches and foothills north-west of Calgary. Local amounts of up to 340 mm were recorded at stations in the upper Sheep, Elbow and Bow River basins. In addition a combination of melting frozen ground in the foothills and areas of saturated ground conditions in the lowlands contributed further to extreme runoff and extremely high river flow conditions.

Alberta provincial flood advisories were issued beginning June 3rd and continued through the month in anticipation of normal seasonal thaw conditions in the mountains and foothills. Advisories were upgraded to Flood Watch by mid-month and a Flood Warning was issued for all areas of the province by June 20th following the extensive rainfall. Flows were recorded over the next few days between 5 and 10 times the seasonal normal and reached a peak volume of 1,700cms in Calgary. Previous peak levels were recorded in 1932 at 1520cms and 2005 at 791cms.

The downtown areas of Calgary, much of which is located in flood plain were inundated and well as other downstream communities including High River. Over 100,000 people were evacuated from their homes with damage to property and infrastructure exceeding \$3 billion, by far the costliest flood event in Canadian history. Downtown Calgary was completely shut down and as many as 20 stream monitoring stations destroyed during the event.

Outcomes:

Previous documents prepared in 2006 relating flood management included 16 recommendations including:

- prioritize, develop and maintain Flood Risk Maps

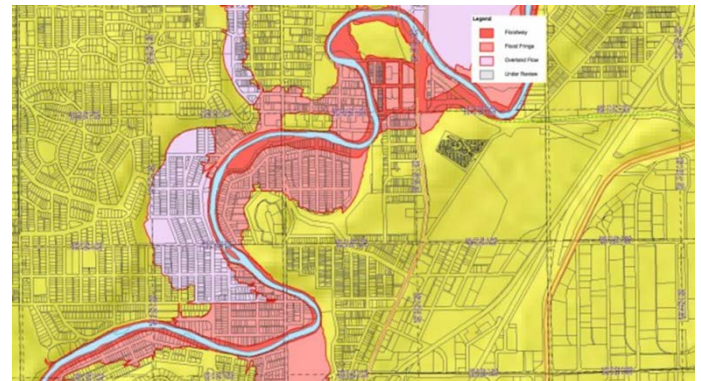


- establish and map 1:100 year flood levels
- enhanced data collection and analysis
- designate “Flood Risk Areas” to control and limit development.
- notification to future property buyers of Flood Risk Area designation.
- province would develop programs to cost-share flood mitigation measures to protect existing development in urban and rural areas. The costs should be shared among the federal, provincial, and local governments.
- tighter controls on project funding, prohibit recovery dollars, for deemed inappropriate development (new) and proposed in flood prone areas



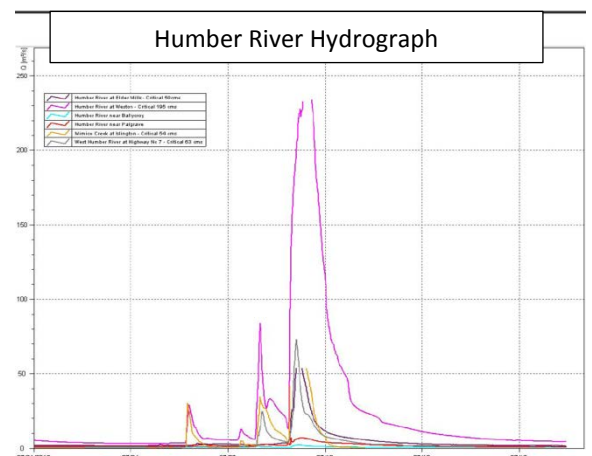
This report was shelved in 2006 but then released in 2012 in an effort to gain additional support for the original recommendations. Following the 2013 flood the province took the following actions:

- Alberta to ban development in floodways (1:100 year).
- program to assist in cost to relocate.
 - pay for rebuilds in floodway, but 1 time only
 - in Flood Fringe Zones, Government will pay for rebuild but must flood proof. If not, no future disaster assistance
- Bow and Elbow Rivers carved new course resulting in new flood mapping being required
- implementation of a comprehensive flood mapping strategy for all urban, areas



Toronto Event

On July 8 a significant moist frontal wave brought between 75mm and 126mm to the Toronto region with 126mm falling at Pearson Airport (exceeds Hazel 24 hour total). Flows were impacted in the Don and Humber Rivers where levels rose quickly.



Storm sewersheds moved runoff directly into the rivers due to the imperviousness of urban roads and urban development rather than the rainfall impact being reduced by infiltration. In contrast with the Calgary event where rain fell some distance away from the city, resulting in downstream flows causing urban flooding, the Toronto event concentrated the rain directly over the city over a very short period of time, overwhelming existing drainage systems and flooding areas such as the lower Don Valley Parkway.



Impact of the flood included property damage, power outages effecting over 300,000 people as well as the potential for loss of life and infrastructure damage totaling over \$600 million. The event was forecasted on the basis of radar and meteorological data but the true path and impact of the extensive storm cell was difficult to predict until it had begun.

While the city was able to provide emergency response plans, the role of forecasting and warning together with flood and erosion control, planning and regulations remain an important role for Conservation Authorities in urban environment. Unlike Toronto, Calgary may be limited by the tools available at the provincial and municipal level in Alberta. Additional coordinated steps through Conservation Authorities toward the overall management of flood planning and infrastructure, regulatory strategies, and comprehensive accurate floodplain mapping are an integral part of preparation for significant events.



Staff Report

8.(ii)

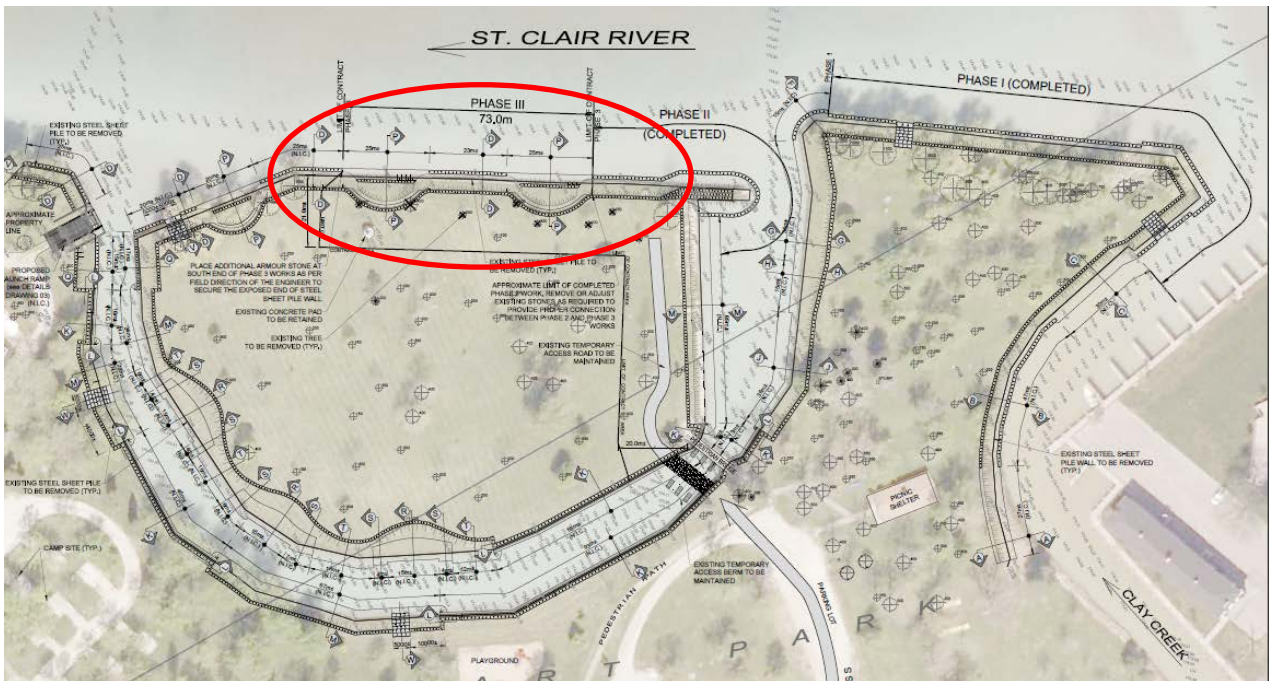


To: Board of Directors
Date: November 01, 2013
From: Girish Sankar, Water Resources Engineer
Subject: Cathcart Park Shore Protection Revitalization, Phase III



Status Update: Phase III

- ❖ a budget of \$293,000 has been confirmed for the project (St. Clair Township \$160,000; Great Lakes Guardian Community Fund \$15,000; Great Lakes Sustainability Fund \$93,000; Ministry of Environment (COA) \$25,000)
- ❖ tenders were advertised for this phase of the project during the week of October 28th
- ❖ tenders close on November 13th
- ❖ staff will review the tenders and make the recommendation to the Board Meeting on November 14th
- ❖ all permits and approvals have been obtained from MNR and DFO
- ❖ construction is expected to begin early December 2013



Staff Report

9.(i)



To: Board of Directors
Date: November 1, 2013
From: Jacob Kloeze, Water Quality Technician
Erin Carroll, Aquatic Biologist
Subject: Current monitoring, education and stewardship projects with Aamjiwnaang and Kettle and Stony Point First Nations

SCRCA staff members have been involved in a number of different projects with First Nations communities throughout the watershed. The scope and role played in each projects ranged, but a large amount of the involvement has focused on conservation education.

Talfourd Creek – Aamjiwnaang First Nation

- ❖ Conservation Authority staff have worked with the Aamjiwnaang Environment Committee on the Talfourd Creek Restoration Project
- ❖ staff have been involved in four community events, with a focus on providing information to community members on stream ecology and water quality
- ❖ the fourth and final community event, held on September 25th, worked with the after school program where three activities were held
 - Benthic picking and identification → kids were given benthic samples where they found and identified different benthic macroinvertebrates
 - Toad abodes → kids created toad houses out of terra cotta pots, which they were able to paint and decorate
 - Tree planting → 10 large stock trees (native Oaks and Silver Maple) were planted with the help of the children



Aboriginal Fund for Species at Risk (AFSAR)

- ❖ SCRCA is one of eight partners working with the Kettle Stony Point First Nations to provide monitoring, habitat enhancement, stewardship and outreach with respect to Species at Risk on Kettle-Stony Point lands
- ❖ on October 10, outdoor education and biology staff members visited Hillside Elementary School to lead an outdoor education program – with the focus of the program being on how important the Kettle-Stony Point First Nations area is to a wide range of species
- ❖ November 8, outdoor education and biology staff members re-visited Hillside Elementary School to re-enforce concepts introduced to student in October.

Outdoor Educators Talk

- ❖ on September 6, biology staff gave a talk on these successful collaborations with outdoor educators from other Conservation Authorities in the region. Attendees were keen on learning how SCRCA was able to secure grants to do this type of work.

Looking Forward – Ontario Trillium Grant application for Aquatic Inventory and Education Outreach Program

- ❖ on November 1, a grant application was submitted to the Ontario Trillium Foundation requesting support for a continuation of the outreach and education program delivered at Kettle Stony Point First Nations. This collaborative project between St. Clair Region Conservation Authority (SCRCA), Carolinian Canada Coalition (CCC), Kettle & Stony Point First Nation (KSPFN) would consist of two major components:

1. **Healthy Lake Huron Education and Outreach** - improved engagement of local residents using a multi-faceted approach to education and outreach on the topic of healthy watersheds. Program to include an outdoor education program, in-stream demonstration, fact sheets, open house, media releases, and scientific reports delivered jointly by SCRCA, CCC, KSPFN. Information collected for this inventory will update watershed reporting. The project will help us better understand the watershed and communicate the progress we've made in protecting it and the threats to its future health. Collaboration with KSPFN and CCC on this project will promote inclusion by allowing for enhanced sharing of knowledge and communication across organizations/groups allowing for the breakdown silos.

2. **Healthy Lake Huron Tributary Aquatic Inventory** - covering approximately 450kms of Lake Huron tributary watercourses, the aquatic inventory will include fish and mussel distribution maps, improved thermal regime mapping and improved watercourse layer geometry. Mussels and top predator fish are not identified and under-represented the study area. Yet, historical and anecdotal evidence supports presence of mussels, trout, and northern pike in the targeted watercourses. A better understanding of aquatic resources will provide watershed residents, and the general public with the information needed to protect, restore and improve these natural resources within our watersheds.

Staff Report

9.(ii)



To: Board of Directors
Date: November 1, 2013
From: Jessica Van Zwol, Healthy Watershed Specialist
Subject: Healthy Watersheds Program – Lambton Shores

Background:

Lambton Shores Healthy Lake Huron Program

Lambton Shores Tributaries (LST) Watershed received funding from Ontario Ministry of the Environment and Environment Canada as part of the Healthy Lake Huron – Clean Water, Clean Beaches campaign, which identified 5 priority sub-watersheds along Lake Huron Shoreline that require immediate action to improve beach and inland surface water quality.

Recent Activities:

- met with Communities in Bloom Judges to detail plans regarding wetland habitat restoration at the retired Forest Sewage Lagoons
- mailed letters to **475 landowners** in Lambton Shores encouraging participation in stewardship projects and introducing a new cover crop grant
 - to date, we've awarded **3 grants** for cover crops and a septic system upgrade totaling **\$4,896** given to landowners for their stewardship projects
 - regrettably, the wet fall has prevented some farmers from planting cover crops, which may explain low uptake for the new cover crop grant
- co-hosted the 2nd Annual Great Canadian Shoreline Cleanup at Centre Ipperwash Beach with the Municipality of Lambton Shores to increase awareness of the importance of clean beaches and clean water in the Great Lakes
 - although fewer volunteers attended than last year, many of the volunteers came both years and found the beach to be much cleaner this year!
- attended the Forest Fall Fair (September 20-22, 2013) – it was a great opportunity let residents know who the SCRCA is and what we do. Staff spoke with **~250 people**
- co-hosted a Volunteer Wetland Restoration Planting Day at the retired Forest Sewage Lagoons with Communities in Bloom, CH2MHill, the Municipality of Lambton Shores, and the Lambton Shores Nature Trails Committee (October 16, 2013)
 - the first scheduled planting day was rained out, but we were able to have **13 volunteers** from CH2MHill, the Municipality, and the Lambton Shores Nature Trails Committee on a beautifully sunny and warm October day
 - volunteers speedily planted 390 native shoreline plants and shrubs to help naturalize the retired lagoons into more suitable habitat for migrating waterfowl
 - this project was funded in part by a **TD Friends of the Environment** grant
- water quality sampling during storm events using the automatic water sampler on Shashawandah Creek continues
- staff continue to meet with the Lambton Shores Steering committee for project input
- SCRCA is offering prizes for completing an online survey about cover crop implementation <http://www.scrca.on.ca/cover-crop-survey/>

Upcoming events:

- *late November 2013*
 - farm workshop – Maintaining 30% crop residue year round at the Forest Fairgrounds
- *December 12 & 13, 2013*
 - John Deere Days at Podolinsky Equipment Ltd.

CIB judges learn about wetland habitat restoration project

Communities in Bloom judges made a stop at the former Forest Sewage Lagoons last week to learn more about the wetland habitat restoration project that will take its place.

On Thursday, August 1 CIB judges Lucie Gagné and Bob Lewis learned about the plans for the retired lagoons which include lowering the water level to encourage the growth of wetland plants and a community shoreline planting day planned for the fall.

Van Zwol was on hand to explain the importance of wetlands for wildlife habitat and for maintaining good water quality. She also discussed the community planting day, in which volunteers will be planting native shoreline plants like swamp milkweed, blue flag iris, and ninebark, all of which create habitat, secure sediment and are aesthetically pleasing to hikers along the lagoon trail. Funding support for the planting day was secured through TD Friends of the Environment Foundation.

Shawn Young of CH2MHill discussed how his organization has committed to constructing a viewing platform and making improvements to the existing trail for local residents to enjoy bird watching and nature viewing.

"The goals of the restoration project and community planting day are to improve wetland habitat, encourage residents to spend time outdoors and get involved in their local community, as well as provide the local community with a greater understanding of the impact of individual efforts within our local watershed and the watersheds of the Great Lakes," says Van Zwol.

News article in the Forest Standard highlighting the interconnectedness between wetland habitat restoration project and the health of the Great Lakes (August 7).



Jessica Van Zwol, of St. Clair Regional Conservation Authority and Shawn Young representing CH2MHill were on site the former Forest Sewage Lagoons last week, educating Communities in Bloom judges about the planned wetland habitat restoration project. Shown in photo is Van Zwol speaking to Lucie Gagné and Bob Lewis. Photo submitted



Local volunteers collecting garbage on Central Ipperwash Beach, Lambton Shores during the 2nd Annual Great Canadian Shoreline Cleanup – an event co-hosted with the Municipality of Lambton Shores (September 14).

Volunteers planting native shoreline plants at the Forest Sewage Lagoon (October 16)



Staff Report

9.(iii)



To: Board of Directors
Date: November 1, 2013
From: Jessica Van Zwol, Healthy Watershed Specialist
Subject: Healthy Watersheds Program – Sydenham Headwaters

Background:

- **Healthy Sydenham Headwaters Initiative (HSHI)**
 - the St. Clair Region Conservation Authority and Middlesex Stewardship Council (MSC) have partnered on this Initiative to guide conservation and restoration efforts in these important headwaters areas
 - land selected for the HSHI is located in the south-west corner of Middlesex County
 - actions in the headwaters will have the greatest impact on the entire watershed
 - funding is available for projects including: riparian buffers, tree planting, wetland and woodlot restoration, and strengthening wildlife movement corridors

Ongoing Activities:

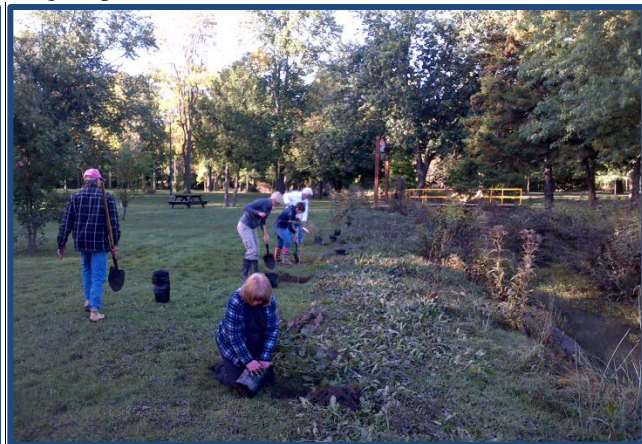
- **1 more wetland project** has been completed in the headwaters with funding from Wildlife Habitat Canada, Habitat Stewardship Program and MNR Species at Risk Fund
- staff continue to conduct site visits and field calls regarding the mail out in May 2013
- co-hosted a Community Planting Day at Alexandra Park with the Municipality of Strathroy-Caradoc (September 21, 2013)
 - the original date was rained out and the park flooded; although, we still had 8 volunteers attend ready to plant in the rain!
 - we rescheduled for September 25, 2013 and still had 12 volunteers from RBC, the Municipality, the Strathroy Lions Club, and the local community attend
 - volunteers learned about the importance of riparian buffers and wetlands and planted 244 native shrubs and trees along the Sydenham River and Stokman Drain
 - the project was supported by a **RBC Community Action Grant** and **Wildlife Habitat Canada Grant**
- co-hosted a Youth Planting Day at Alexandra Park with the Municipality of Strathroy-Caradoc (October 21, 2013)
 - nearly 120 grade four, seven and eight students from North Meadows Elementary School planted 150 native shrubs and trees
 - students learned about the importance of riparian buffers and wetlands in keeping streams healthy. They also learned about fish and benthic monitoring and how biologists use this information to determine the health of a stream
- staff submitted a Wildlife Habitat Canada application on behalf of MSC for community events and wetland projects in 2014-2015 (**\$27,500**) to continue restoration efforts

Upcoming events:

- *December 12 & 13, 2013*
 - John Deere Days at Podolinsky Equipment Ltd.



Jessica Van Zwol, SCRCA Healthy Watershed Specialist, and Justin Pasichnyk, a representative from the Strathroy RBC bank planting a young tulip tree in Alexandra Park.



Community volunteers planting native trees and shrubs as riparian buffers along the Sydenham River and Stokman Drain in Alexandra Park September 25.

RIPARIAN BUFFERS

WHAT IS A RIPARIAN BUFFER?
A Riparian Buffer is an area of land beside a stream or river with trees and shrubs and vegetation.

WHAT DO RIPARIAN BUFFERS DO?

- Help keep pollution and runoff from entering the water
- Trap and take up nutrients and contaminants that could harm the stream
- Help maintain a healthy ecosystem for aquatic organisms in the stream
- Provide habitat and food for terrestrial and aquatic plants and animals
- Lower water temperatures
- Protect stream banks from erosion and provide stream bank stability
- Act like a sponge when the stream floods or when there is a lot of precipitation like rain or snow
- In urban areas, riparian buffers can help keep waterways clean and ensure our drinking water is healthy!

BY PLANTING SHRUBS TODAY, YOU ARE HELPING THE PARK'S RIPARIAN BUFFERS DO ALL OF THE ABOVE!

WETLANDS

WHAT IS A WETLAND?
A Wetland is an area of land that holds water either temporarily or permanently.

WHAT DO WETLANDS DO?

- Improve water quality by acting like a filter to remove nutrients, sediment, and pollution
- Change many chemicals into less harmful forms
- Reduce flood damage by holding water on the land and slowly releasing water to rivers and streams at a rate they can handle
- Reduce erosion because aquatic plant roots hold onto the soil and can slow the water current down
- Provide habitat and food for terrestrial and aquatic plants and animals

WETLANDS ARE HOME TO AT LEAST 47 PLANT AND ANIMAL SPECIES THAT HAVE BEEN IDENTIFIED AS "AT RISK", WHICH MEANS THEY NEED OUR HELP TO CREATE AND IMPROVE THE HABITAT THEY CALL HOME!

This project was undertaken with the financial support of:
DR 20051-816-68108 avec l'Assuj. financier de:

Riparian Buffer and Wetland factsheet given to students who attended the Alexandra Park Planting Day October 21

Staff Report

9.(iv)



To: Board of Directors
Date: November 1, 2013
From: Erin Carroll, Aquatic Biologist
Subject: Development of Sydenham River Conservation Action Plan (CAP)

A Conservation Action Plan (CAP), is being developed in co-operation with watershed municipalities, farm organizations, residents, interest groups, and Carolinian Canada. This terrestrial CAP (focusing on forests, prairies, etc) will be complimentary to the aquatic Sydenham River Recovery Strategy.



Model for Conservation Action Planning involves Adaptive Management, meaning that we aim to balance gaining knowledge to improve management in the future and achieving the best short-term outcome based on current knowledge.

What is Conservation Action Planning?

- Conservation Action Planning (CAP) is an effective and efficient way to conserve many species and habitats at the same time.
- CAP focuses on areas where conservation efforts are most urgent and most likely to be successful.
- the process brings together local partners that have and interest in protecting the area:
 - Municipalities
 - Land Trusts
 - First Nations
 - Corporations
 - Conservation Authorities
 - Naturalist Clubs
 - Stewardship Councils
 - Government agencies
- CAP was developed by the Nature Conservancy (US) and has been used for more than 30 years in many cultural and political settings.
- CAP is a clear, achievable and measurable approach that appeals to funders.

In 2013, St. Clair Conservation also collaborated on recently completed CAPs for Lake St. Clair Coastal and Rondeau – Erie Coast.

Staff Report

9.(v)



To: Board of Directors
Date: November 14th, 2013
From: Jacob Kloeze, Water Quality Technician
Subject: Fish Monitoring

Fish Surveys

Biology staff members conducted fish surveys at a number of different locations within the watershed. Sampling efforts were undertaken using an electrofishing backpack unit and seine net, as using both allows for access to a greater variety of sampling locations including drains, rivers, ponds and reservoirs. Results from some of the sampling sites are listed below:

Fig 1: Electrofishing at Stockman Creek



Fig 2: Seine netting at Strathroy Reservoir



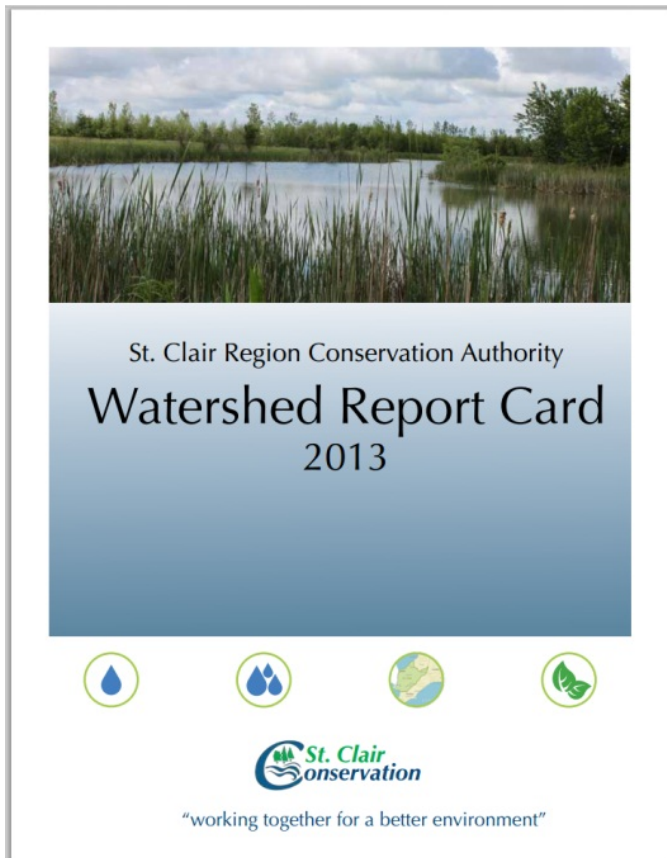
Electrofishing		
Location	Date Sampled	Species Recorded
Coldstream Conservation Area	June 6 th , 2013	Blacknose Dace, Blackside Darter, Bluntnose Minnow, Common Shiner, Creek Chub, Green Sunfish, Greenside Darter, Hornyhead Chub, Johnny Darter, Northern Hog Sucker, Pumpkin Seed, Redhorse spp., Rock Bass, White Sucker
Lamont Drain – Clark Wright Conservation Area	Oct 11 th , 2013	Blackside Darter, Bluegill, Bluntnose Minnow, Bullhead, Central Mudminnow, Creek Chub, Green Sunfish, Johnny Darter, Mottled Sculpin+, Pumpkin Seed, Spotfin Shiner, White Sucker
East Sydenham River – White Pine Road & Rokeby Line	Oct 18 th , 2013	Blackside Darter, Blackstripe Topminnow*, Bluntnose Minnow, Greenside Darter, Johnny Darter, Rock Bass, Sand Shiner, Spottail Shiner, Stonecat, White Sucker

+Sculpin is classified as a cold water fish.

* One species of particular interest is the Blackstripe Topminnow, as it is currently listed as Special Concern under COSEWIC. This sighting is the furthest upstream the species has been recorded in the East Sydenham River

Seine Netting		
Location	Date Sampled	Species Recorded
Strathroy Reservoir	May 23 rd , 2013	Bluntnose Minnow, Common Shiner, Johnny Darter, Largemouth Bass, Spottail Shiner, White Sucker
McLean Drain – Keith McLean Property	Aug 29 th , 2013	Bluegill, Gizzard Shad, Largemouth Bass, Pumpkin Seed, Brook Silverside, unknown cyprinid

Monitoring efforts this season were focused on watercourses within the Sydenham Headwaters. This area was of particular importance, as a number of Stewardship Projects have been implemented within the subwatershed aimed at improving water quality. SCRCA staff, in partnership with the Middlesex Stewardship Council, has worked with private landowners on the creation/enhancement of wetlands, riparian buffers and woodlots, as well as encouraging the implementation of Best Management Practices such as conservation tillage and the planting of cover crops.



Reporting

All data collected through monitoring activities are recorded in a master list of fish species throughout the watershed. The data in this master list, among other uses, will be included in the next Watershed Report Card to be completed. Past monitoring efforts have been included in the recent version of the Watershed Report Card, released earlier this year. This edition of the Report Card, covering 2006 – 2010, can be found on the SCRCA website. The full report is available, as are individual summary reports for each of the 14 subwatersheds.

Fig 3: Cover of the recently released Watershed Report Card

Staff Report

10.(i)



To: Board of Directors
Date: November 1, 2013
From: Steve Shaw, Conservation Services Specialist
Subject: Conservation Services Report

Tree Planting Program

- above average number of requests from private landowners have been received over the past couple of months for tree planting assistance for the 2014 season
- staff are calling landowners, setting up appointments and making site visits to all eligible sites in order to prepare a proper tree planting prescription and develop a tree planting plan for each site. The total number of trees and tree species required for next year also needs to be determined during this process.
- currently, more than \$100,000 in grant has been secured through several individual tree planting and habitat improvement programs.
- approximately 70,000 trees are planted annually and heavily subsidized with combined funding from all grant agencies.

Seed Collection Program

- this year's tree seed collection was very successful with approximately 2,200 litres of oak, hickory, maple and walnut seed collected and shipped to the tree nursery.
- deciduous trees are a major component of our tree planting program and future seedling stock from the tree nursery is related to the tree seed we collect and ship annually.



- all tree seed collected by SCRCA staff is completed in the Lambton County tree seed zone and is grown by Somerville Nursery near Alliston, ON. Since demand for deciduous trees is higher than what is available from tree nurseries, first choice for next year's trees is given to the agency that collected that particular tree seed. This also ensures that trees planted by SCRCA in the future will be from genetically local tree stock.

Vegetation Management Program

- fall herbicide application for vegetation control on 2010 to 2013 tree planting sites started in the first week of October and will end after the first heavy frost.
- wet weather conditions have made spraying difficult this fall and we are behind schedule.



- approximately 180,000 trees require spraying with approximately 75,000 still to complete this fall.
- more than 45 km of municipal brush spraying was completed this summer and fall for the municipality of Southwest Middlesex. Regrowth of woody brush from the previous year's drain clean out is treated with a herbicide to prevent re-establishment.
- more than 500 man hours of brush control was completed this year.

Wetland Creation and Erosion Control

- wetland creation and erosion control work was conducted on several McKeough upland properties and private land properties this year.
- approximately 7 acres of wetland enhancement was created and the majority of the cost was funded by several combined grant programs.



- permanent wetlands for wildlife habitat are constructed in areas where land has eroded or is located in low lying and poorly drained farm land.

- temporary ponding basins are constructed mainly in erodible crop land areas to prevent rilling and gullying as well as stop sediment run off into the adjacent creeks and river system
- most projects are eligible for funding through our Species at Risk and Habitat Stewardship grant programs.



Waste Management – Twin Creeks Landfill (Watford)

- large stock tree planting work continues at Waste Management again this fall.
- a new dog park was created this summer at the south end of the property with public access to the park from Confederation Line
- large stock deciduous trees where to provide shade and aesthetics to the area



- large stock coniferous trees were planted in two sections of the berm at the north end of the property to replace some open sections where trees did not survive
 - vegetation management continues to be implemented in new property tree buffer areas and in the poplar phytoremediation zones

**ST. CLAIR REGION CONSERVATION AUTHORITY
REGULATIONS ACTIVITY REPORT**

11.(i)

September 30, 2013

TO: SCRCA Chair and Board of Directors

**SUBJECT: Administration and Enforcement – Section 28 Status Report –
Development, Interference of Wetlands and Alteration to Shorelines and
Watercourses Regulation**

FROM: Dallas Cundick, Environmental Planner / Regulations Officer

A summary of staff activity related to the Conservation Authority's *Development, Interference of Wetlands and Alterations to Shorelines and Watercourses Regulation* (Ontario Regulation 171/06 under Ontario Regulation 97/04) is presented below. This report covers the period from September 1, 2013 to September 30, 2013.

Application # 10764

Enbridge Pipelines Inc.

Integrity Dig, Lot Block B, Concession 0, Geographic Township of Sarnia, County of Lambton

- Permission required to conduct an integrity dig, at this location to inspect a portion of pipeline 8.
- The integrity dig will consist of exposing the pipeline to conduct a visual inspection, conducting any necessary repairs, and restoring the soil and vegetation once complete.
- Appropriate erosion and sediment control measures will be installed prior to initiation of the works and maintained until all works are complete to ensure that no silt, sediment and debris enters the watercourse;
- Staff permission issued September 12, 2013;

Application # 10804

Travis Bouma

Lot 17, Ferne Avenue, Lot 23, Concession Front, Geographic Township of Plympton, County of Lambton

- Permission required to construct an approximately 2163 square foot (~201 m²) one story single family dwelling with a full basement and an attached garage on the subject property.
- No grading changes, excavations, site alterations, development, etc. will be completed within the SCRCA Limit (between the proposed dwelling location and the bottom of the ditch along the south property line) as depicted on the certified lot grading plan completed by Nisbet, Robertson.
- All surface and subsurface drainage will be controlled on the subject property as per certified lot grading plan completed by Nisbet, Robertson, and any excess fill will be taken off site.

- Disturbed areas will be stabilized and returned to original condition or better.
- Staff permission issued September 12, 2013.

Application # 10805

Andrea and Emily Johnson

6398 Shiloh Line, Lot 2, Concession 7, Geographic Township of Brooke, County of Lambton

- Permission required to construct an approximately 2071.5 square foot single family dwelling with a basement and attached double car garage on the subject property.
- The minimum lowest opening elevation will be no lower than 209.80m (G.S.C.), and the final grade elevation around the building will be at a minimum elevation of 209.80m G.S.C. for a horizontal distance of 2.0 m.
- The access driveway will be raised, and surface and subsurface drainage will be controlled as per Nisbet, Robertson Certified Lot Grading Plan within the subject property.
- Excess fill if any will be removed from the site.
- Staff permission issued September 3, 2013;

Application # 10806

Ron and Sharon Field

4630 Lakeside Street, Lot 45, Concession Front, Geographic Township of Plympton, County of Lambton

- Permission required to construct a new wood deck directly behind the single family dwelling on the subject property.
- Propose to replace the existing 14 x 6 ft. (~84 ft²) deck with a new 14 x 13.5 ft. (~189 ft²) deck.
- The proposed deck does not extend closer to the side lot lines than the existing dwelling, and there will be no grading changes or excavations required between the existing deck and the top of bank of the Lake Huron shoreline bluff.
- Staff permission issued September 4, 2013;

Application # 10807

Patty Wilson

421 Courtright Line, Lot 26, Concession 4, Geographic Township of Moore, County of Lambton

- Permission required to construct a new non-habitable accessory structure (drive shed).
- The proposed drive shed will be approximately 32 x 40 ft. with a concrete floor.
- The proposed elevation of the new drive shed concrete floor top will be at an elevation equal to the centerline road elevation of Courtright Line.
- Overall existing drainage patterns will be maintained.
- No development (fill placement, etc.) will be completed between the proposed drive shed and the wetland boundary located to the southeast and west of the proposed drive shed.
- All disturbed areas will be stabilized and returned to original condition, and any excess fill and debris will be taken off site.

- Staff permission issued September 12, 2013;

Application # 10808

Ted and Shelly Archer

3238 Sutorville Road, Lot 7, Concession 6, Geographic Township of Brooke, County of Lambton

- Permission required to construct an addition onto the southeast corner of the existing dwelling.
- The proposed addition will be constructed with a new 8 inch poured concrete wall with footings to be min 4 feet below grade to match existing, and the finished floor of the addition will be flush with the existing dwelling main floor elevation.
- The proposed addition will have dimensions of approx. 16 ft. by 11 ft. and will be a one storey addition.
- There will be no alternations to the minimum lowest openings to the existing dwelling, and the grades around the proposed addition will match the grades around the existing dwelling.
- Staff permission issued September 13, 2013.

Application # 10809

Susan Mackinlay

Queen Street, Lot 7, Concession 10, Geographic Township of Plympton, County of Lambton

- Permission required to construct an approximately 1842.3 square foot single family dwelling with attached two car garage on the existing vacant lot.
- The new dwelling and all construction activities at its closest location to the shoreline will be situated outside of the stable slope allowance plus 100yr.RR (78 m from bottom of bank).
- No grading changes, excavation, fill placement, site alterations, etc. will be required between the proposed dwelling and the top of the bank of the bluff slope, and that all surface and subsurface drainage will be directed away from the shoreline bluff.
- Excess fill will be removed from the property.
- Staff permission issued September 27, 2013.

Application # 10810

Enbridge Pipelines Inc.

Integrity Dig, Lot Block B, Concession 0, Geographic Township of Sarnia, County of Lambton

- Permission required to conduct an integrity dig, at this location to inspect a portion of pipeline 8.
- The integrity dig will consist of exposing the pipeline to conduct a visual inspection, conducting any necessary repairs, and restoring the soil and vegetation once complete.
- Appropriate erosion and sediment control measures will be installed prior to initiation of the works and maintained until all works are complete to ensure that no silt, sediment and debris enters the watercourse;

- Staff permission issued September 12, 2013;

Application # 10811

Enbridge Pipelines Inc.

Integrity Dig, Lot Block B, Concession 0, Geographic Township of Sarnia, County of Lambton

- Permission required to conduct an integrity dig, at this location to inspect a portion of pipeline 8.
- The integrity dig will consist of exposing the pipeline to conduct a visual inspection, conducting any necessary repairs, and restoring the soil and vegetation once complete.
- Appropriate erosion and sediment control measures will be installed prior to initiation of the works and maintained until all works are complete to ensure that no silt, sediment and debris enters the watercourse;
- Staff permission issued September 12, 2013;

Application # 10812

Enbridge Pipelines Inc.

Integrity Dig, Lot Block B, Concession 0, Geographic Township of Sarnia, County of Lambton

- Permission required to conduct an integrity dig, at this location to inspect a portion of pipeline 8.
- The integrity dig will consist of exposing the pipeline to conduct a visual inspection, conducting any necessary repairs, and restoring the soil and vegetation once complete.
- Appropriate erosion and sediment control measures will be installed prior to initiation of the works and maintained until all works are complete to ensure that no silt, sediment and debris enters the watercourse;
- Staff permission issued September 12, 2013;

Application # 10813

Enbridge Pipelines Inc.

Integrity Dig, Lot 13, Concession 4, Geographic Township of Sarnia, County of Lambton

- Permission required to conduct an integrity dig, at this location to inspect a portion of pipeline 8.
- The integrity dig will consist of exposing the pipeline to conduct a visual inspection, conducting any necessary repairs, and restoring the soil and vegetation once complete.
- Appropriate erosion and sediment control measures will be installed prior to initiation of the works and maintained until all works are complete to ensure that no silt, sediment and debris enters the watercourse;
- Staff issued Letter of Advice on behalf of Department of Fisheries and Oceans, September 18, 2013;
- Staff permission issued September 18, 2013;

Application # 10816

Enbridge Pipelines Inc.

Integrity Dig, Lot 10, Concession 4, Geographic Township of Sarnia, County of Lambton

- Permission required to conduct an integrity dig, at this location to inspect a portion of pipeline 8.
- The integrity dig will consist of exposing the pipeline to conduct a visual inspection, conducting any necessary repairs, and restoring the soil and vegetation once complete.
- Appropriate erosion and sediment control measures will be installed prior to initiation of the works and maintained until all works are complete to ensure that no silt, sediment and debris enters the watercourse;
- Staff issued Letter of Advice on behalf of Department of Fisheries and Oceans, September 18, 2013;
- Staff permission issued September 18, 2013;

Application # 10817

Enbridge Pipelines Inc.

Integrity Dig, Lot 9, Concession 4, Geographic Township of Sarnia, County of Lambton

- Permission required to conduct an integrity dig, at this location to inspect a portion of pipeline 8.
- The integrity dig will consist of exposing the pipeline to conduct a visual inspection, conducting any necessary repairs, and restoring the soil and vegetation once complete.
- Appropriate erosion and sediment control measures will be installed prior to initiation of the works and maintained until all works are complete to ensure that no silt, sediment and debris enters the watercourse;
- Staff issued Letter of Advice on behalf of Department of Fisheries and Oceans, September 18, 2013;
- Staff permission issued September 18, 2013;

Application # 10818

Enbridge Pipelines Inc.

Integrity Dig, Lot 9, Concession 4, Geographic Township of Sarnia, County of Lambton

- Permission required to conduct an integrity dig, at this location to inspect a portion of pipeline 8.
- The integrity dig will consist of exposing the pipeline to conduct a visual inspection, conducting any necessary repairs, and restoring the soil and vegetation once complete.
- Appropriate erosion and sediment control measures will be installed prior to initiation of the works and maintained until all works are complete to ensure that no silt, sediment and debris enters the watercourse;
- Staff issued Letter of Advice on behalf of Department of Fisheries and Oceans, September 18, 2013;
- Staff permission issued September 18, 2013;

Application # 10819

Enbridge Pipelines Inc.

Integrity Dig, Lot 13, Concession 1 NER, Geographic Township of Warwick, County of Lambton

- Permission required to conduct an integrity dig, at this location to inspect a portion of pipeline 8.
- The integrity dig will consist of exposing the pipeline to conduct a visual inspection, conducting any necessary repairs, and restoring the soil and vegetation once complete.
- Appropriate erosion and sediment control measures will be installed prior to initiation of the works and maintained until all works are complete to ensure that no silt, sediment and debris enters the watercourse;
- Staff permission issued September 12, 2013;

Application # 10820

Mark Braun and Amanda Ross

5894 Telfer Road, Lot 9, Concession 7, Geographic Township of Sarnia, County of Lambton

- Permission required to construct an approximately 1774 square foot single family dwelling with an unfinished basement on the subject property.
- We understand that the minimum lowest opening into the dwelling will be at an elevation of 183.6m or higher. Surface drainage will be controlled as per Monteith and Sutherland Limited Certified Lot Grading Plan within the subject property.
- Sub-Surface drainage will be controlled as per Royal Homes Limited Project 5261 Custom Selkirk drawings 3-6.
- Development will be a minimum of 43.5m from the edge of the Telfer Diversion Channel.
- Staff permission issued September 16, 2013;

Application # 10821

Lamsar Industrial Contractors

Integrity Dig, Lot 26, Concession 10, Geographic Township of Moore, County of Lambton

- Permission required to conduct an integrity dig, at this location, to inspect a portion of pipeline.
- The integrity dig will consist of exposing the pipeline to conduct a visual inspection, conducting any necessary repairs or replacements, and restoring the soil and vegetation once complete.
- All sediment and erosion control measures will be installed prior to commencement of the works and be maintained until all disturbed areas have been rehabilitated to pre-construction conditions, at which time they will be removed.
- Staff permission issued September 16, 2013.

Application # 10826

Manuel Couto

22901 Springfield Road, Lot 5, Concession 2, Geographic Township of Ekfrid, County of Middlesex

- Permission required to construct an approximately 1862.5 square foot single family dwelling on the elevated lands behind the existing dwelling on the subject property.

- The lowest opening (bottom of window sill) into the proposed dwelling will be at an elevation no lower than 100.26 m, and the top of the foundation will be at an elevation no lower than 101.20 m. The final grade elevation around the dwelling will be at a minimum elevation of 100.75 m for a horizontal distance of 2 m.
- Excess fill will be removed from site.
- The grade elevation of the access laneway (proposed driveway) to the new dwelling will be no lower than the centreline road elevation of Springfield Road adjacent the proposed dwelling along its entire length.
- Surface and subsurface drainage will be controlled as per Archibald, Gray & McKay Ltd. certified lot grading plan within the subject property.
- Staff permission issued September 27, 2013.

Application # 10827

Jim VanderWal

4427 VanderWal Drive, Lot 15, Concession 12, Geographic Township of Enniskillen, County of Lambton

- Permission required for the construction works undertaken within the regulated area on the subject property;
- A new non-habitable accessory structure was constructed on the subject property.
- Construction was an approximately 15 m by 25 m container shelter, constructed of pre-finished metal roofing on top of shipping containers with a crushed and packed recycled gravel base and recycled railway ties below the containers;
- Structure is located towards the northwest corner of the property, northwest of the existing building on the subject property;
- Structure maintains a minimum 12 m setback from the top of the bank of the ravine system associated with the watercourse (Bear Creek) at its closest location;
- No grading, fill placement, site alteration, etc. is to be completed between the structure and the top of the bank of the ravine system;
- Area between the structure and the top of bank is well vegetated;
- Drainage from the structure is directed to a well vegetated grassed area and not channelized and directed over the top of the bank of the ravine slope;
- All development is outside the erosion hazard limit;
- Staff permission issued September 30, 2013.

Recommended and approved by:

Dallas Cundick, Environmental Planner/Regulations Officer

Patty Hayman, Director of Planning

**ST. CLAIR REGION CONSERVATION AUTHORITY
REGULATIONS ACTIVITY REPORT**

11.(i)

October 31, 2013

TO: SCRCA Chair and Board of Directors

**SUBJECT: Administration and Enforcement – Section 28 Status Report –
Development, Interference of Wetlands and Alteration to Shorelines and
Watercourses Regulation**

FROM: Dallas Cundick, Environmental Planner / Regulations Officer

A summary of staff activity related to the Conservation Authority's *Development, Interference of Wetlands and Alterations to Shorelines and Watercourses Regulation* (Ontario Regulation 171/06 under Ontario Regulation 97/04) is presented below. This report covers the period from October 1, 2013 to October 31, 2013.

Application # 10757

Wpd Napier Wind Inc.

Lot 9 and 10, Concession 4, Geographic Township of Adelaide, Municipality of Middlesex

- Permission required to trench within the road allowance for installation of a wind turbine collector line within the SCRCA regulated area (floodplain) on Brown Road including an undercrossing of Rapley Drain Ext.
- Appropriate sediment and erosion methods are to be installed prior to the commencement of construction and be maintained throughout the works;
- Construction area will be restored to original condition and all debris will be removed off site; and
- Disturbed soils are to be stabilized and re-vegetated immediately after completion of the works.
- Staff permission issued October 1, 2013;

Application # 10823

Enbridge Gas Distribution Inc.

Lot 19, Concession 7, Geographic Township of Moore, County of Lambton

- Permission required to construct a new office/warehouse with associated access, parking, loading dock, stormwater management pond and tile bed.
- The majority of the development will be outside of the SCRCA regulated area but the stormwater outlet, and access laneways are within the regulated area.
- The new culverts will not impact flood elevations or flow upstream or downstream;
- The stormwater outlet has appropriate erosion controls and will maintain the current profile of the bank of the watercourse.
- Appropriate sediment and erosion control methods are to be installed prior to the

- commencement of construction and be maintained throughout the works;
- Construction area will be restored to original condition and all debris will be removed off site;
- Disturbed soils are to be stabilized and re-vegetated immediately after completion of the works.
- Staff permission issued October 1, 2013.

Application # 10824

Lamsar Industrial Contractors

Integrity Dig, Lot 26, Concession 10, Geographic Township of Moore, County of Lambton

- Permission required to conduct an integrity dig, at this location, to inspect a portion of pipeline.
- The integrity dig will consist of exposing the pipeline to conduct a visual inspection, conducting any necessary repairs or replacements, and restoring the soil and vegetation once complete.
- All sediment and erosion control measures will be installed prior to commencement of the works and be maintained until all disturbed areas have been rehabilitated to pre-construction conditions, at which time they will be removed.
- Staff permission issued October 4, 2013;

Application # 10835

Municipality of Strathroy-Caradoc

154 Caradoc Street North, Lot 22, Concession 4 SER, Geographic Township of Adelaide, Municipality of Strathroy-Caradoc

- Permission required to remove the existing municipal swimming pool/accessory facilities and replace with a parking lot for passive recreation opportunities in Alexandra Park, Cuddy Fields and network park system.
- The works will be completed as per engineered lot grading plan completed by BOS Engineering & Environmental Services Inc., titled: Proposed Parking Area – 154 Caradoc Street North, Project No. 1307-18, dated October 11, 2013.
- There will be no in-water works, all disturbed areas will be stabilized and returned to original condition.
- Emergency flood plans will be in place, there will be signage indicating day use only, no overnight parking, all excess fill will be removed from the floodplain;
- Appropriate sediment and erosion control measures be installed prior to commencement of the works and be maintained until all disturbed areas have been rehabilitated to pre-construction conditions, at which time they will be removed.
- Regulations Committee Permission issued October 15, 2013;

Application # 10836

Denis Marcus

4011 St. Clair Parkway, Lot E, Concession 8, Geographic Township of Sombra, County of Lambton

- Permission required to tie a new 3.49 m break wall into the existing seawall wall at the subject property. The proposed works are located directly adjacent (north of) the existing concrete culvert under the St. Clair Parkway.
- Engineered Drawings completed by Y.C. Liu engineering, Project: New Shoreline Breakwall for Denis Marcus, File No. 09-246, Dated September 19, 2013, Sheet No. SP-1 to SP-3;
- Installation of 3.49 m section of new breakwall detached from municipal concrete culvert to match north side break wall as per above drawings;
- There will be no in-water works, and measures to control erosion and sedimentation and protect fish habitat will be completed as per above drawings;
- All disturbed areas will be stabilized and returned to original condition or better;
- Appropriate erosion and sediment control measures will be implemented to ensure that silt, sediment, and debris is contained and isolated and not transported to the watercourse; and;
- Staff issued Letter of Advice on behalf of Department of Fisheries and Oceans, October 17, 2013;
- Staff permission issued October 17, 2013;

Application # 10837

Jennifer Burbidge, Marilyn Collyer in Trust

4606 Lakeside Street, Lot 45, Concession Front, Geographic Township of Plympton, County of Lambton

- Permission required to repair the foundation and floor joists on cottage, and replace the sunroom/entrance room destroyed by water damage and black mold. The works are to be completed as per the following;
- Geotechnical Engineering Report completed by LVM: *Slope Stability Assessment, Lot 1, RP 31, 4606 Lakeside Street, Town of Plympton-Wyoming, dated June 22, 201, Our ref.: 161-P041161-0100-GE-0001-00;*
- Report Completed by LVM: *Foundation Design Review, Lot 1, RP31, 4606 Lakeside Street, Plympton-Wyoming, Ontario, P161-B-0007391-1-GE-L-0001-00, dated October 8, 2013;*
- Registered Professional Engineered Drawings stamped/completed by K.J. Maaten, KEMCO Engineering and Construction LTD., Project Title 4606 Lakeside Street, Plympton Wyoming, Burbidge Cottage;
- Helical Pile Installation Log completed by Foundation Support Works, Project Name: Burbidge Cottage Foundation, Project Address: 4606 Lakeside St. Plympton-Wyoming;
- It is our understanding that the works will be completed as per the recommendations and designs of the above noted documents.
- LVM is to provide written confirmation to the SCRCA upon completion of the works that their conclusions/recommendations for the proposed construction to repair the foundation on the cottage and replace the entrance room (*as per Geotechnical Engineering Report and Foundation Design Review noted above*) have been adhered to.

- Regulations Committee permission issued October 15, 2013.

Application # 10838

Ryan Chapman

6824 Rokeby Line, Lot 7, Concession 9, Geographic Township of Brooke, County of Lambton

- Permission required to construct an approximately 2339 square foot single family dwelling on the subject property.
- Certified Lot Grading Plan, DWG. No S-13-269-B, dated October 21, 2013, prepared by Nisbet, Robertson, J.D. & T.M. Nisbet Inc.;
- Detailed Drawings complete by Brandon Home Design, BCIN No.: 37061, Project No.: BN139, Project Title: 2,339 S.F Bungalow Dated: July 15, 2013, A3 and A5 of A6, revision dated October 1, 2013;
- The minimum foundation opening (lowest opening) into the proposed dwelling will be at an elevation no lower than 213.5 m (G.S.C.), and the final grade elevation around the dwelling will be at a minimum elevation of 213.5 m (G.S.C.) for a horizontal distance of 2 m.
- The proposed driveway will have a minimum elevation of 213.0 m (G.S.C.) along its entire length. Surface and subsurface drainage will be controlled as per J.D. & T.M. Nisbet Inc. certified lot grading plan within the subject property, and excess fill will be removed from the property.
- Staff permission issued October 29, 2013.

NOVA Chemicals 2020 Project

785 Petrolia Line, Lots 22 to 24, Concession 9 and 10, Geographic Township of Moore, Township of St. Clair, County of Lambton

PRE-CONSULTATION

Status and Progression of File

January 2013 to October 2013;

- Several Meetings held between staff of the SCRCA and NOVA Chemicals for proposed 2020 Project since January 2013;
- NOVA 2020 is a multi-year asset strategy to capitalize on emerging feedstock opportunities and growing North American polyethylene demand;
- The subject works are the Corunna Site Polyethylene expansion which includes the construction of a solution phase polyethylene facility on NOVA Chemicals' Advanced SCLAIRTECH Technology (AST2);
- Expansion is intended to be in an area of existing open space mainly located south of an existing brine storage pond referred to as Lake Tillman;
- Portions of the property in the location of the proposed expansion are affected by the Authority's regulation as they are in the vicinity of the Allingham Drain and McClemens Drain;
- NOVA has engaged Stantec to complete a Surface Water Drainage and Floodplain Assessment Report to assess the existing and proposed hydrologic and hydraulic conditions and to delineate

the existing and proposed Regional Floodplain along the Allingham Drain and McClemens Drain in the vicinity of the proposed AST2 expansion and associated construction envelope;

- The objective of the assessment is to ensure that the proposed development may proceed without creating adverse impacts on the existing hydrology, hydraulics and flood inundation zones in the receiving municipal drains and adjacent lands both upstream and downstream of the site.

October 24, 2013

- Surface Water Drainage and Floodplain Assessment Report was received by staff of the SCRCA;
- Majority of the subject property is identified as being susceptible to flooding during a regional storm flooding event, as an extensive shallow Regional Storm floodplain area along the south side of Lake Tillman exists in the immediate vicinity of the proposed AST2 expansion;

Proposed mitigation

- Improvements are proposed along the Allingham Drain, which include widening the existing channel while maintaining a low-flow channel to support existing fish habitat, removing an abandoned vehicular access crossing, and upsizing an existing vehicular access crossing (improved existing conditions regional storm floodplain);
- These improvements are to eliminate the floodplain spill along the south side of Lake Tillman;
- Site development will include fill encroachment into the Regional Storm floodplain, the proponent is recommending that the improved existing conditions regional storm floodplain be considered as the baseline condition when determining the compensating cut/excavation required to offset proposed AST2 fill encroachments;
- On-site opportunities for providing a compensating cut have been identified in the report;
- SCRCA discussed Authority concerns with proposed cut and fill plan, as generally cut and fill proposals are not permitted;
 - Therefore, Non-adherence to floodplain policy and proposal to provide all technical information and mitigation for cut and fill for review and decision by both Regulations Committee and potentially Board of Directors;
- NOVA explained that they are going to proceed with submitting an application to the Authority for review and want to know all detailed information Authority would require to adequately review the proposed cut and fill plan;
- Authority to send email correspondence to NOVA outlining information related to cut and fill proposal plan requirements for submitting a complete application to the Authority for the proposed NOVA 2020 Project, and proposed cut and fill plan.

Recommended and approved by:

Dallas Cundick, Environmental Planner/Regulations Officer

Patty Hayman, Director of Planning

**ST. CLAIR REGION CONSERVATION AUTHORITY
REGULATIONS ACTIVITY REPORT – VIOLATIONS AND CORRECTIVE ACTIONS**

October 31, 2013

TO: SCRCA Chair and Board of Directors

**SUBJECT: Administration and Enforcement – Section 28 Status Report –
Development, Interference of Wetlands and Alteration to Shorelines and
Watercourses Regulation**

FROM: Dallas Cundick, Environmental Planner / Regulations Officer

A summary of staff activity related to Violations of the Conservation Authority's *Development, Interference of Wetlands and Alterations to Shorelines and Watercourses Regulation* (Ontario Regulation 171/06 under Ontario Regulation 97/04) is presented below. This report covers the period from September 1, 2013 to October 31, 2013.

FV #201213

Ilderton Road, North Part Lot 1, Concession 8, Geographic Township of Lobo, County of
Middlesex

- subject property is an agricultural zoned property that was recently purchased by neighbouring cattle farmers;
- the majority of the 50 acre parcel is low lying lands that are identified as a PSW, and there is about 10 acres of elevated table lands.
- the CA was notified that the landowner began to remove vegetation within a PSW
- staff visited the site on July 9th and confirmed that vegetation removal and disturbance of the wetland had occurred and spoke with landowner about the removals. He indicated that vegetation was being removed to complete the replacement of the old perimeter fence line on the property. Staff asked for work to be stopped at that time until a further assessment could take place;
- staff of the SCRCA met with landowners and their consultant on site July 24th;
- Consultant submitted plans on the landowners behalf outlining the proposed works required to replace the old perimeter fence line;
- staff of the SCRCA reviewed the proposed works and determined that interference to the hydrological function of the wetland will not occur if certain additional mitigation measures and best management practices are implemented, the key mitigation measures outlined in a letter sent to the landowner August 9, 2012 include:
 - the maximum extent of vegetation removal is 20 ft. (6 m) from the property boundary for the footprint of the fence posts and the fence line;
 - vegetation removal is limited to the perimeter of the subject property and is not carried out anywhere else within the wetland boundary;
- August 16, 2012 Authority staff completed inspection of the works to review for compliance with the agreed upon conditions;
- as a result of that inspection, Authority staff determined that vegetation removal in excess

of the agreed upon maximum extent of vegetation removal permitted was completed on the subject property;

- mass clearing of wetland vegetation had occurred on the property within the low lying areas outside the agreed upon 6 metre limit of vegetation removal;
- the Authority's regulation under section 5, "Alterations Prohibited" states ".....no person shall.....interfere in any way with a wetland". Upon further investigation, Authority staff have concluded that mass clearing of wetland vegetation constitutes an interference with a wetland;
- interference in any way is interpreted as:
 - *"any anthropogenic act or instance which hinders, disrupts, degrades or impedes in any way the natural features of hydrologic and ecologic functions of a wetland"* (March 2008, Draft Guidelines to Support Conversation Authority Administration of the "Development, Interference with Wetlands and Alterations to Shorelines and Watercourses Regulation", prepared by Ministry of Natural Resources/Conservation Authority Section 28 Peer Review and Implementation Committee.);
- Notice of Violation Letter sent September 7, 2012;
- Notice of Violation Form sent September 7, 2012;
- Notice of Violation Follow Up Letter sent September 7, 2012;
 - letter stated that the Authority requires the proponent cease any further unauthorized vegetation removal and contact the Authority immediately to advise of the measures they propose to remedy the situation. The Authority's goal is to remediate the unauthorized vegetation removal, and therefore asks for voluntary restoration.
- If landowner fails to comply with this request, the Conservation Authority can review its legal options with respect to the site, including but not limited to prosecution;
- September 17, 2012, consultant sent letter of behalf of the landowners to inform the Authority that they will cease any further vegetation removal, and they will allow the cleared wetland vegetation to naturally restore itself;
- Authority staff continue to monitor the site;
- Week of August 5, 2013, SCRCA staff noticed that cattle grazing the site;
- Appeared to be 5 – 6 head;
- Staff have not formally notified the owner that the cleared wetland vegetation has naturally restored itself;
- Staff to monitor site, 5-6 head of cattle may not impact wetland vegetation to extent to cause interference with a wetland;
 - However, improper density (40-50 head of cattle) may greatly impact wetland;
- Staff to monitor the site regularly to review impacts of cattle grazing on the wetland over time;

FV 201215

6332 William Street, Lot Ipperwash, Concession Front, Geographic Township of Bosanquet, County of Lambton

- Conducted site investigation September 26, 2012;

- Unauthorized shoreline protection works along the Lake Huron Shoreline on the subject property had occurred in violation of Section 28 of the *Conservation Authorities Act*, as landowner did not apply or receive approval to carry out these works;
- Notice of Violation Letter sent to landowner and contractor September 27, 2012;
- Notice of Violation Form sent to landowner and contractor September 27, 2012;
- Landowner contacted the Authority to discuss options for measures to remedy the situation on October 12, 2012;
- Authority staff continue to review all issues in the West Ipperwash Beach area in detail and will be advising the interested parties in the area;
- Authority staff to move forward with setting up on-site meeting with landowner to discuss beach dynamics and process going forward;
- Authority Staff called proponent and working on an on-site meeting date (proponent resides at alternative location during fall/winter months);

FV 201216

2894 Old Lakeshore Road, Lot 4, Concession 9, Geographic Township of Sarnia, County of Lambton

- Conducted site investigation October 4, 2012;
- Unauthorized deck construction works along the Lake Huron Shoreline on the subject property had occurred in violation of Section 28 of the *Conservation Authorities Act*, as landowner did not apply or receive approval to carry out these works;
- Notice of Violation Letter sent to agent (son of landowner) September 27, 2012;
- Notice of Violation Form sent to agent (son of landowner) September 27, 2012;
- Authority staff met with the proponents on October 26, 2012 and outlined Authority's role in hazard land management and reasons for concerns with deck structure;
- Authority staff advised that deck must be removed, and discussed options for relocating to area of decreased risk;
- Authority Staff contacted the City of Sarnia to determine ownership of land where the deck has been constructed;
- Deck appears to be off the landowners property and on an area of land between the water's edge and the subject property;
- City of Sarnia to look into ownership of the land and determine if city owns the land in the location of the constructed deck;
- Authority staff awaiting confirmation from City of Sarnia on landownership situation before proceeding accordingly;
- City responded to the Authority that the Registry Office indicated any unpinned property belonged to the Crown, therefore it is not City property. While some maps may indicate the structure extends beyond the homeowners' property, the only way to know for sure would be to have a surveyor go out there;
- Authority staff to proceed with formal letter to the proponent outlining Authority requirements;
- Formal letter outlining Authority requirements sent March 13, 2013;
- Proponent responded to the Authority March 27, 2013 via solicitor that they will be proceeding with an application for the works undertaken with modifications to meet SCRCA policy;
- CA Staff met with Landowner and solicitor on Tuesday, May 21, 2013 on site to discuss;

- Landowner was quite adamant that removing the structure is not an option for them;
- Discussion was mostly on what investigations/reports/modifications/etc. needed to be completed to allow deck structure to remain somewhere on the property;
- Following the meeting the solicitor responded formally with a written response to the Authority (received May 25, 2013), that they will be retaining the services of a qualified professional coastal engineer to review the works undertaken and complete a report on the dynamic beach, structure, coastal processes, impacts, and recommendation, etc.;
- Follow up correspondence sent September 4, 2013 stating;
 - The Authority requires that you provide written correspondence to the Authority by October 6, 2013, indicating if you have indeed retained the services of Shoreplan Engineering, and the date at which you will be submitting an application for the works undertaken with modifications to meet SCRCA policy as per correspondence sent to you from the Authority dated March 13, 2013, including an assessment completed by a qualified professional engineer with experience in coastal processes (Shoreplan) ensuring that deck is not negatively impacting coastal processes (Deck must be located outside defined portions of the Dynamic Beach Hazard and design must minimize impact to dune area). Confirmation from Shoreplan Engineering that they are working on Shoreline Hazard Assessment should be submitted to the Authority with your correspondence.
 - The Authority requires that subject violation is resolved. If the Authority is not satisfied that adequate measures are being undertaken to submit an application for the works undertaken with modifications to meet SCRCA policy as outlined in correspondence from the Authority to the proponent March 13, 2013, or the unauthorized deck construction is not removed from the property by October 6, 2013, the Authority will proceed with further legal action as specified under the *Conservation Authorities Act*.
- Letter from solicitor received October 2, 2013;
- Noted that Shoreplan Engineering visited the property and will be retained, they attached a letter they sent to Shoreplan stating this;
- Letter stated that their still remains an issue with respect to the location of the important northerly boundary of the property which in the solicitors legal view would be approximately 10 ft. north of the bank;
- They asked that the Authority allow them until the end of November to obtain and review the Shoreplan Engineering Report and to allow them to provide a legal opinion with respect to confirming the northerly limits to the property in question;

Recommended and approved by:

Dallas Cundick, Environmental Planner/Regulations Officer

Michelle Fletcher, Regulations and Natural Heritage Technician

Patty Hayman, Director of Planning

Drainage Act and Conservation Authorities Act Protocol (DART)

(a protocol for municipalities and CAs in drain maintenance and repair)

Completed Files

Municipal drain June-September 2013 activity report associated with the Drainage Act and Conservation Authorities Act Protocol (DART) approved by the Board April 18, 2013.

SCRCA DART Files

2013 June

11.(ii)

FHR #	Municipality	Geographic Township	Drain Name	Project Description	SCRs Issued
2146	CHATHAM-KENT	CHATHAM	RUNCIMAN AND PARROTT DRAIN	BOTTOM CLEANOUT, BRUSHING OF BANK SLOPE ON ONE SIDE ONLY	2
2150	CHATHAM-KENT	CHATHAM	KENT BRIDGE CUT OFF DRAIN	BOTTOM CLEANOUT AND BRUSHING OF BANK SLOPE	2

SCRCA DART Files

2013 July

FHR #	Municipality	Geographic Township	Drain Name	Project Description	SCRs Issued
2095	BROOKE-ALVINSTON	BROOKE/ENNISKILLEN	BROOKE-ENNISKILLEN DAWN TOWNLINE DRAIN	CULVERT REPLACEMENT	1
2151	CHATHAM-KENT	CAMDEN	BADDER-MACDONALD DRAIN	BOTTOM CLEANOUT AND BRUSHING OF BANK SLOPE	1
2152	CHATHAM-KENT	CHATHAM	BOULTON DRAIN	BOTTOM CLEANOUT AND BRUSHING OF BANK SLOPE	2
2153	CHATHAM-KENT	CHATHAM	9 TH CONCESSION DRAIN	CULVERT REPLACEMENT	1
2154	CHATHAM-KENT	CHATHAM	BROWNING DRAIN	BOTTOM CLEANOUT AND BRUSHING OF BANK SLOPE	2
2169	PLYMPTON-WYOMING	PLYMPTON	KING-WRIGHT DRAIN	BOTTOM ONLY CLEANOUT	1
2170	PLYMPTON-WYOMING	PLYMPTON	SHERK DRAIN	BOTTOM CLEANOUT PLUS BRUSHING ONE BANK SLOPE	1
2171	PLYMPTON-WYOMING	PLYMPTON	WATSON DRAIN	BOTTOM CLEANOUT PLUS BRUSHING ONE BANK SLOPE	1
2172	PLYMPTON-WYOMING	PLYMPTON	ELLIOT CAMPBELL DRAIN	BRUSHING BANK SLOPE	1

2173	PLYMPTON-WYOMING	PLYMPTON	MCDONALD-GILLATELY DRAIN	CULVERT REPLACEMENT	1
2174	PLYMPTON-WYOMING	PLYMPTON	CARMICHAEL DRAIN	BOTTOM CLEANOUT AND LIGHT BRUSHING ON ONE BANK SLOPE	1
2142	SARNIA	SARNIA	PORTER CREEK DRAIN	EMERGENCY CULVERT REPLACEMENT	1
2147	ST. CLAIR	MOORE	WHEELER DRAIN	DEBRIS REMOVAL, BRUSHING OF BANK SLOPE, BRUSHING OF TOP OF BANK	3
2143	ST. CLAIR	SOMBRA	BENNETT DRAIN	4 CULVERT REPLACEMENTS	1
2145	ST. CLAIR	SOMBRA	WATSON CREEK DRAIN	CULVERT REPLACEMENT, BRUSHING BANK SLOPE AND BOTTOM CLEANOUT	3
2141	ST. CLAIR	MOORE	BAXTER DRAIN	CULVERT REPLACEMENT	1
2156	ST. CLAIR	MOORE	HESCOTT-ANDERSON DRAIN	EMERGENCY CULVERT REPLACEMENT	1
2144	WARWICK	WARWICK	LEACH DRAIN	BOTTOM ONLY CLEANOUT AND BRUSHING OF ONE BANK SLOPE	1
2148	WARWICK	WARWICK	WOUTERS DRAIN	BOTTOM CLEANOUT AND BRUSHING OF ONE BANK SLOPE	1
2160	WARWICK	WARWICK	MCPHERSON DRAIN	BOTTOM ONLY CLEANOUT	1

SCRCA DART Files

2013 August

FHR #	Municipality	Geographic Township	Drain Name	Project Description	SCRs Issued
2193	CHATHAM-KENT	DOVER	RANKIN CREEK DRAIN	BOTTOM ONLY CLEANOUT	1
2194	CHATHAM-KENT	CHATHAM	STONE AND GEORGE DRAIN	BOTTOM ONLY CLEANOUT BRUSHING BANK SLOPE	2
2198	DAWN EUPHEMIA	DAWN	BOURNE AND HUSTLER DRAIN	CULVERT REPLACEMENT	1
2211	DAWN EUPHEMIA	DAWN	DALTON DRAIN	CULVERT REPLACEMENT	1
2187	PLYMPTON-WYOMING	PLYMPTON	CHALMERS DRAIN	BOTTOM CLEANOUT PLUS ONE BANK SLOPE	1

2188	SOUTHWEST MIDDLESEX	EKFRID	NORTH BRANCH OF SUTTON DRAIN	BOTTOM CLEANOUT BRUSHING BANK SLOPE AND TOP OF BANK	3
2189	SOUTHWEST MIDDLESEX	MOSA	DEACON WINSHIP DRAIN	BOTTOM CLEANOUT, BRUSHING OF BANK SLOPE AND TOP OF BANK	3
2190	SOUTHWEST MIDDLESEX	EKFRID	ENSIL IRWIN DRAIN	BOTTOM CLEANOUT, BRUSHING OF BANK SLOPE AND TOP OF BANK	3
2191	SOUTHWEST MIDDLESEX	MOSA	FLOYD WINSHIP DRAIN	BRUSHING BANK SLOPE AND TOP OF BANK	2
2183	ST. CLAIR	MOORE	JOHNSON CREEK DRAIN	CULVERT REPLACEMENT	1

SCRCA DART Files

2013 September

FHR #	Municipality	Geographic Township	Drain Name	Project Description	SCRs Issued
2149	CHATHAM-KENT	CHATHAM	IRVING AND TOWNLINE DRAINS	BOTTOM CLEANOUT AND BRUSHING OF BANK SLOPE	2
2195	CHATHAM-KENT	ZONE	BUTLER DRAIN	BOTTOM ONLY CLEANOUT	1
2196	CHATHAM-KENT	ZONE	BUTLER DRAIN NORTH BRANCH	BOTTOM ONLY CLEANOUT	1
2205	CHATHAM-KENT	CHATHAM	17 TH CONCESSION DRAIN	BOTTOM ONLY CLEANOUT CULVERT REPLACEMENT	2
2215	CHATHAM-KENT	CHATHAM	TURRELL DRAIN	BOTTOM CLEANOUT BRUSHING OF BANK SLOPE	2
2216	CHATHAM-KENT	CHATHAM	STEPHENS DRAIN	CULVERT REPLACEMENT	1
2231	CHATHAM-KENT	CHATHAM	GIBSON DRAIN	BOTTOM CLEANOUT BRUSHING BANK SLOPE CULVERT REPLACEMENT	3
2234	CHATHAM-KENT	CHATHAM	HEADLEY DRAIN	BOTTOM CLEANOUT BRUSHING BANK SLOPE	2
2236	CHATHAM-KENT	CHATHAM	PADDY DRAIN	BOTTOM CLEANOUT BRUSHING BANK SLOPE	2
2237	CHATHAM-KENT	DOVER	MARCHAND DRAIN	BOTTOM CLEANOUT BRUSHING BANK SLOPE AND TOP OF BANK	3

2239	CHATHAM-KENT	DOVER	BURKE DRAIN	BOTTOM CLEANOUT BRUSHING BANK SLOPE AND TOP OF BANK	3
2242	CHATHAM-KENT	CHATHAM	WELLS DRAIN	BOTTOM CLEANOUT AND BRUSHING BANK SLOPE	2
2197	DAWN EUPHEMIA	DAWN	9 TH CONCESSION DRAIN	CULVERT REPLACEMENT	1
2199	DAWN EUPHEMIA	DAWN	CHARLES LAWRENCE DRAIN	CULVERT REPLACEMENT	1
2200	DAWN EUPHEMIA	DAWN	SALMON DRAIN	CULVERT REPLACEMENT	1
2201	DAWN EUPHEMIA	DAWN	11 TH CONCESSION ROAD DRAIN	CULVERT REPLACEMENT	1
2202	DAWN EUPHEMIA	DAWN	4 TH AND 5 TH CONCESSION DRAIN	CULVERT REPLACEMENT	1
2203	DAWN EUPHEMIA	DAWN	2 ND CONCESSION DRAIN	CULVERT REPLACEMENT	1
2204	DAWN EUPHEMIA	DAWN	JOHNSTON- MCKAY DRAIN	CULVERT REPLACEMENT	1
2206	DAWN EUPHEMIA	DAWN	THOMPSON DRAIN	CULVERT REPLACEMENT	1
2212	DAWN EUPHEMIA	DAWN	OLIVER DRAIN	CULVERT REPLACEMENT	1
2213	DAWN EUPHEMIA	EUPHEMIA	SHEPHERD DRAIN	CULVERT REPLACEMENT	1
2214	DAWN EUPHEMIA	DAWN	DAWN ANDERSON DRAIN	CULVERT REPLACEMENT	1
2192	ST. CLAIR	MOORE	SCOTT DRAIN	BOTTOM CLEANOUT BRUSHING BANK SLOPE	2

Total SCRs	85
-------------------	-----------

SCRCA Monthly Planning Activity Summary 2013 September 11.(iii)

File Ref.	Municipality	Geographic Twp.	Concession	Lot	Street
ZBA 2013	ADELAIDE-METCALFE	ADELAIDE	CON 1 NER	LOT 31	EGREMONT DRIVE
FI 2013	BROOKE-ALVINSTON	BROOKE	CON 3	LOT 3	OIL SPRINGS LINE
FI 2013	BROOKE-ALVINSTON	BROOKE	CON 13	LOT 24	LASALLE LINE
FI 2013	CHATHAM-KENT	CAMDEN	CON 13	LOT 7	CIDER MILLS LINE
FI 2013	CHATHAM-KENT	CAMDEN	CON 9 GORE	LOT 6	CROTON LINE
OP 2013	CHATHAM-KENT	CHATHAM	CON 1	LOT 1	
FI 2013	ENNISKILLEN	ENNISKILLEN	CON 4	LOT 11	COURTRIGHT LINE
FI 2013	ENNISKILLEN	ENNISKILLEN	CON 1	LOT 3	FAIRWEATHER ROAD
FI 2013	ENNISKILLEN	ENNISKILLEN	CON 10	LOT 12	GLENVIEW ROAD
FI 2013	ENNISKILLEN	ENNISKILLEN	CON 13	LOT 16	LASALLE LINE
FI 2013	ENNISKILLEN	ENNISKILLEN	CON 11	LOT 11	WOODLAND PARK
FI 2013	LAMBTON SHORES	BOSANQUET	FRONT	IPPER	RUTH PLACE
FI 2013	LAMBTON SHORES	BOSANQUET	CON WEST	LOT 70	BEACH STREET
FI 2013	LAMBTON SHORES	BOSANQUET	CON 19	LOT 2	EAST PARKWAY DRIVE
LL 2013	LAMBTON SHORES	BOSANQUET	CON 18	LOT 1	ARMY CAMP ROAD
LL 2013	LAMBTON SHORES	BOSANQUET	CON 19	LOT 5	WEST PARKWAY DRIVE
FI 2013	MIDDLESEX CENTRE	LOBO	CON 8	LOT 18	IVAN DRIVE
LL 2013	MIDDLESEX CENTRE	LOBO	CON 7	LOT 18	VANNECK ROAD
FI 2013	PLYMPTON-WYOMING	PLYMPTON	CON FRONT	LOT 7	EGREMONT ROAD
FI 2013	PLYMPTON-WYOMING	PLYMPTON	CON FRONT	LOT 15	QUEEN STREET
FI 2013	PLYMPTON-WYOMING	PLYMPTON	CON FRONT	LOT 50	EDITH LANE
LL 2013	PLYMPTON-WYOMING	PLYMPTON	CON 5	LOT 16	OIL HERITAGE ROAD
VAR A09/2013	PLYMPTON-WYOMING	PLYMPTON	CON FRONT	LOT 27	LAKESHORE ROAD
FI 2007	SARNIA	SARNIA	R 7	LOT 1	
FI 2013	SARNIA	SARNIA	0	BLOCK	PLANK ROAD
FI 2013	SARNIA	SARNIA	CON 9	LOT 1	LAKEVIEW TRAIL
SUB 2013	SARNIA	SARNIA	CON 9	LOT 8	ESTELLA STREET
FI 2013	ST. CLAIR	MOORE	CON 7	LOT 1	MANDAUMIN ROAD
SEV B8/2013	ST. CLAIR	MOORE	CON 7	LOT 19	MOORE LINE
SUB 39T-	STRATHROY-CARADOC	CARADOC	CON 3	LOT 18	GLENDON DRIVE
SUB 39T-	STRATHROY-CARADOC	CARADOC	CON 9	LOT 13	SAXTON ROAD
EA-06-2013	WARWICK	WARWICK	CON 1 SER	LOT 3	
FI 2013	WARWICK	WARWICK	CON 1 SER	LOT 10	
LL 2013	WARWICK	WARWICK	CON 5 NER	LOT 8	BIRNAM LINE

SCRCA Monthly Planning Activity Summary 2013 October

File Ref.	Municipality	Geographic Twp.	Concession	Lot	Street
FI 2012	CHATHAM-KENT	CHATHAM	CON 3 GORE	LOT A	BISHOP ROAD
FI 2013	CHATHAM-KENT	CAMDEN	CON 4 GORE	LOT 4	LINDSLEY ST WEST
SEV B90/13	CHATHAM-KENT	CHATHAM	CON 2 GORE	LOT 28	TUPPERVILL ROAD

File Reference Codes:

CZ - Comprehensive Zoning
 ZBA - Minor Zoning Bylaws and Amendments
 OP(A) - Official Plan (Amendments)
 TC - Tree Cutting

SEV - Severances
 VAR - Variances
 EA / PLEA - Environmental Assessment
 SUB - Subdivision Plans

GI - General Inquiry
 LL - Legal Letters
 SP - Site Plan
 DAR - Development Assessment Review

FI - Regulations (Fill) Inquiry
 NM - Nutrient Management
 PTTW - Permit to Take Water
 SPA - Site Plan Amendments

FI 2013	ENNISKILLEN	ENNISKILLEN	CON 12	LOT 17	SHILOH LINE
FI 2013	ENNISKILLEN	ENNISKILLEN	CON 3	LOT 9	MARTHAVILLE ROAD
FI 2013	ENNISKILLEN	ENNISKILLEN	CON 9	LOT 11	ROKEBY LINE
FI 2013	LAMBTON SHORES	BOSANQUET	WEST OF	LOT 82	LAKESHORE ROAD
FI 2013	LAMBTON SHORES	BOSANQUET	FRONT	IPPER	JUNIPER LANE
LL 2013	LAMBTON SHORES	BOSANQUET	CON 19	LOT 3	
FI 2013	MIDDLESEX CENTRE	LOBO	CON 8	LOT 8	ILDERTON ROAD
FI 2013	PLYMPTON-WYOMING	PLYMPTON	CON 14	LOT 14	LAKESHORE ROAD
FI 2013	PLYMPTON-WYOMING	PLYMPTON	CON FRONT	LOT 12	SCHRAM DRIVE
FI 2013	PLYMPTON-WYOMING	PLYMPTON	CON FRONT	LOT 40	BLUEPOINT DRIVE
FI 2013	SARNIA	SARNIA	CON 9	LOT 50	HILLCREST NESBIT DRI
FI 2013	SARNIA	SARNIA	CON 9	LOT 47	LAKESHORE ROAD
FI 2013	SARNIA	SARNIA	CON 9	LOT 31	LAKESHORE ROAD
FI 2013	SARNIA	SARNIA	CON 9	LOT 23	LAMBERT ST
SEV B24/2013	SARNIA	SARNIA	CON 9	LOT 5	OLIVE AVENUE
SEV B3/13	SARNIA	SARNIA	R 4	LOT 10	KENNY STREET
VAR A41,	SARNIA	SARNIA	CON 9	LOT 5	OLIVE AVE
VAR A42/2013	SARNIA	SARNIA	CON 9	LOT 21	PASSINGHAM DRIVE
FI 2013	ST. CLAIR	MOORE	CON FRONT	LOT 34	ST CLAIR PARKWAY
FI 2013	ST. CLAIR	MOORE	CON 5	LOT 28	
FI 2013	STRATHROY-CARADOC	CARADOC	CON 2	LOT 8	SUTHERLAND ROAD

Meetings

Sept 6 – Town of Petrolia Re; CLFHT and VanderWal Drive – D. Cundick
 Sept 9 – Cedar Point Wind Farm, Suncor – D. Cundick
 Sept 9 – City of Sarnia Council Meeting – C. Lafrance, D. Strang
 Sept 9 – Township of St. Clair Council Meeting – C. Lafrance, D. Strang
 Sept 9 – Strathroy re C. Linker development – P. Hayman, M. Fletcher, M. Andreae
 Sept 11 – Planners meeting @ UTRCA re: SWP – C.Durand, P.Hayman
 Sept 11 – WIFN Sediment Management Options Focus Group – C. Lafrance
 Sept 12 – Canadian Remedial Action Plan Implementation Committee Meeting, Sarnia – C. Lafrance
 Sept 12 – Binational Public Advisory Council Meeting, Sarnia – C. Lafrance
 Sept 13 – Midd Ctre re Dairy Lane development – P. Hayman, M. Fletcher
 Sept 16 – Dredging BUI Discussion Meeting with EC, OMOE, London – C. Lafrance, D. Strang
 Sept 17 – Strathroy re Metcalfe condo development – P. Hayman, M. Andreae
 Sept 19 – Friends of the St. Clair River Meeting – C. Lafrance
 Sept 20 – Lambton Shores re: 5478 Beach St development – P. Hayman
 Sept 23 – CK Official Plan One Window mtg at MMAH London – P. Hayman
 Sept 23 – Municipality of Chatham-Kent Council Meeting – C. Lafrance
 Sept 24 – Village of Point Edward Council Meeting – D. Strang
 Sept 25 – NOVA 2020 Project Meeting – D. Cundick
 Sept 30 – St Clair Twp – Committee of Adjustment re 26 severances on St Clair River – P. Hayman
 Oct 7 – OMNR Meeting – RE: Waterlot Owners – C. Lafrance

File Reference Codes:

CZ - Comprehensive Zoning
 ZBA - Minor Zoning Bylaws and Amendments
 OP(A) - Official Plan (Amendments)
 TC - Tree Cutting

SEV - Severances
 VAR - Variances
 EA / PLEA - Environmental Assessment
 SUB - Subdivision Plans

GI - General Inquiry
 LL - Legal Letters
 SP - Site Plan
 DAR - Development Assessment Review

FI - Regulations (Fill) Inquiry
 NM - Nutrient Management
 PTTW - Permit to Take Water
 SPA - Site Plan Amendments

Oct 9 – Science and Monitoring Workshop, London – C. Lafrance, D. Strang, E. Carroll, K. Smith, M. Andreae
Oct 15 – Regulations Committee Meeting – D. Cundick, B. McDougall, P. Hayman
Oct 17 – Interview for Regulations Officer Position - D. Cundick, B. McDougall, P. Hayman
Oct 22 – WIFN Spills Community Meeting – D. Strang
Oct 23 – NOVA 2020 Project – D. Cundick
Oct 23 – OMOE Sarnia District Office – RE: Update on RAP – C. Lafrance, D. Strang
Oct 28 – Interview for Regulations Officer Position - D. Cundick, B. McDougall, P. Hayman
Oct 28 – State of the Straight Meeting, University of Windsor – C. Lafrance, D. Strang
Oct 29 – Strathroy re Bear creek golf course condo development – P. Hayman, A. Seidler
Oct 31 – Plympton Wyoming – re erosion/drainage issue & development 3836 Ferne Ave – P. Hayman, G. Sankar

File Reference Codes:

CZ - Comprehensive Zoning
ZBA - Minor Zoning Bylaws and Amendments
OP(A) - Official Plan (Amendments)
TC - Tree Cutting

SEV - Severances
VAR - Variances
EA / PLEA - Environmental Assessment
SUB - Subdivision Plans

GI - General Inquiry
LL - Legal Letters
SP - Site Plan
DAR - Development Assessment Review

FI - Regulations (Fill) Inquiry
NM - Nutrient Management
PTTW- Permit to Take Water
SPA – Site Plan Amendments

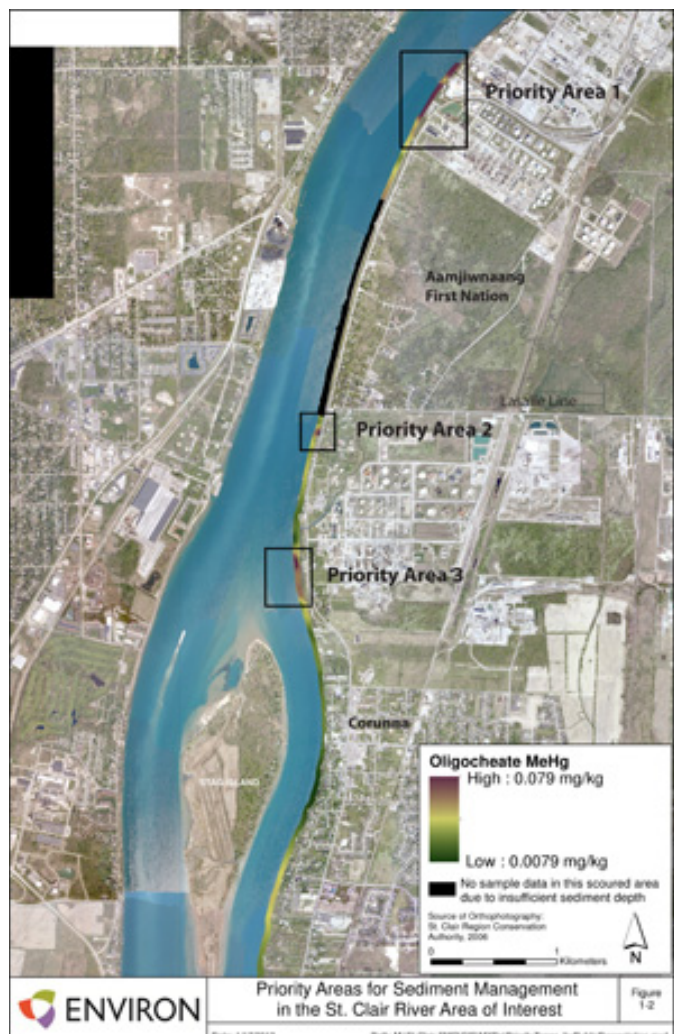
Staff Report 11.(iv)

To: Board of Directors
Date: October 25, 2013
From: Claude Lafrance, Remedial Action Plan (RAP) Coordinator
Donna Strang, Remedial Action Plan (RAP) Research Assistant
Subject: St. Clair River Area of Concern (AOC)

Sediment Management Options (SMO) Project:

The Sediment Management Options (SMO) project for the St. Clair River Area of Concern (AOC) continues to move forward. ENVIRON has incorporated public comments into the draft Sediment Management Options (SMO) report and will be submitting a final document in November.

After consultation with community members, representatives from Aamjiwnaang and Walpole Island First Nations have selected hydraulic dredging as the preferred option for each of the three Areas of Interest (AOIs). This was also the preferred options selected by all members of the Sediment Technical Team. Endorsement of the hydraulic dredging option has been received by the Canadian Remedial Action Plan Implementation Committee (CRIC), and the Binational Public Advisory Council (BPAC).



It is anticipated that the preferred options along with Requests for Funding will be submitted to the federal and provincial governments by the Sediment Technical Team before the end of the year.

Municipal and First Nation Council Presentations:

Throughout the months of September and October, presentations were delivered to the Aamjiwnaang First Nation Environment Committee and Chief and Council and to the councils for the City of Sarnia, St. Clair Township, Municipality of Chatham-Kent and Village of Point Edward. The presentations covered some highlights of the work conducted in the AOC since 2011, along with updates on the SMO project and future activities.

Feedback from Council members was predominantly positive. Many praised the work being conducted within the St. Clair River and were pleased by the promising results observed in the AOC. A presentation to Walpole Island First Nation Chief and Council is expected to be scheduled for later this fall.

Science and Monitoring Workshop:

On October 9, 2013, a Science and Monitoring Workshop was organized by Environment Canada, on behalf of CRIC in London, Ontario. The purpose of the event was to 1) consult with scientific experts on results of their research and/or monitoring projects related to water and sediment quality, fish and wildlife health and habitat availability within the St. Clair River Area of Concern and 2) to provide an opportunity to network and develop collaborations and sharing of data.

Presentations were delivered by scientists from Environment Canada, the Department of Fisheries and Oceans and the University of Windsor Great Lakes Institute for Environmental Research. Topics included water quality, suspended sediment, sediment chemistry, fish habitat modelling, coastal wetland monitoring, fish diversity and wildlife body burdens.

The results and data presented by the scientists suggest that water and sediment chemistry, habitat and wildlife populations are improving within the St. Clair River AOC. Many were optimistic that a number of Beneficial Use Impairments (BUIs) in the AOC could be assessed in the near future and potentially re-designated to “not impaired”. The BUIs that will be assessed are Loss of Fish and Wildlife Habitat, Bird or Animal Deformities or Reproductive Problems and Degraded Fish and Wildlife Populations.

Recent Spill Events in the St. Clair River:

As reported in the media, a number of unfortunate spill events occurred in the St. Clair River over the last couple of months. As a result, downstream water intakes located at Wallaceburg and Walpole Island were shut down for short periods. Despite the significant decrease in the size and frequency of spills since the St. Clair River was listed as an AOC, the recent events have sparked concerns by residents who live along the river and/or depend on it for their drinking water.

Recent spill events occurring since September in the St. Clair River include:

- 1) Tuesday, September 10, 2013 – Low-sulphur diesel fuel leak from Sun-Canadian pipeline (approximately 200 barrels). Fuel reached the St. Clair River via the Cole Drain however, the volume that reached the river is uncertain.
- 2) Tuesday, September 24, 2013 – Biodegradable cleaning product leak from Suncor. Approximately 20 litres reached the St. Clair River.
- 3) Monday, October 7, 2013 – Potassium chloride spill from flushing fire hydrants at TransAlta. The spill originated from a sump pump overflow into the St. Clair River. It was released for one hour but water samples collected by the OMOE indicated that concentrations were not a threat to drinking water.

These spill events along with other recent incidents in the area have sparked debate at the Provincial Legislature at Queen's Park. On October 22, 2013, an SCRCA representative attended a community meeting (as an observer only) at Walpole Island First Nation where the Ontario Ministry of the Environment (OMOE), the Ontario Technical Standards and Safety Authority (TSSA) and Sun-Canadian Pipe Line Company were present to discuss the diesel fuel spill event that occurred on September 10, 2013.

Prepared By: Tracy Prince
November 1, 2013

ST CLAIR REGION CONSERVATION AUTHORITY
Statement of Revenue and Expenditure
For the Nine Months Ended 30/09/2013

12.(i)

	Actual To Date			Annual Budget		Variance from Budget	
	Revenue	Expenditures	Surplus(Deficit)	Revenue	Expenditures	Revenue	Expenditures
Flood Control & Erosion Control	\$680,715	\$316,809	\$363,906	\$645,250	\$645,250	\$35,465	(\$328,441)
Capital Projects/WECI	\$553,209	\$394,553	\$158,656	\$394,500	\$152,000	\$158,709	\$242,553
Conservation Area's Capital Development	\$1,600	\$90,324	(\$88,724)	\$139,500	\$139,500	(\$137,900)	(\$49,177)
IT Capital	\$14,923	\$11,816	\$3,107	\$19,200	\$19,200	(\$4,277)	(\$7,384)
Equipment	\$56,475	\$71,264	(\$14,789)	\$72,000	\$72,000	(\$15,525)	(\$736)
Planning & Regulations	\$212,306	\$273,880	(\$61,574)	\$339,841	\$339,841	(\$127,535)	(\$65,961)
Technical Studies	\$338,419	\$93,911	\$244,508	\$158,888	\$158,888	\$179,531	(\$64,977)
Recreation	\$1,096,302	\$803,017	\$293,285	\$948,450	\$948,450	\$147,852	(\$145,433)
Property Management	\$205,132	\$250,471	(\$45,339)	\$269,000	\$269,000	(\$63,868)	(\$18,529)
Education and Communication	\$94,034	\$129,754	(\$35,719)	\$187,000	\$187,000	(\$92,966)	(\$57,246)
Source Water Protection	\$194,105	\$141,152	\$52,953	\$350,000	\$350,000	(\$155,895)	(\$208,848)
Conservation Services/Healthy Watersheds	\$637,566	\$512,021	\$125,545	\$691,037	\$691,037	(\$53,471)	(\$179,016)
Administration/AOC Management	\$777,983	\$566,891	\$211,091	\$840,000	\$840,000	(\$62,017)	(\$273,109)
	\$4,862,769	\$3,655,862	\$1,206,906	\$5,054,666	\$4,812,166	(\$191,897)	(\$1,156,304)

Notes:

1. The 2012 MNR Operating grant of 310,000 has not been received but is recorded in the actual revenue reported above. Payment received in August 2013
2. Municipal matching levies of have been invoiced and are recorded in the actual revenue, the special or non-matching have not been invoiced
See General Levy Report for amounts outstanding.
3. The significant variances from budget to actual is reflective of the nature/timing and uniqueness of the particular projects.
The variances will reduce and disappear as the year progresses.
4. Detailed statement available upon request
5. Billing for the Source Water Protection will occurred in July 2013, salary expense allocation will be recorded in December with other final allocation

ST. CLAIR REGION CONSERVATION AUTHORITY
Statement of Financial Position
AS AT SEPTEMBER 31, 2013

	GL 2013	Audit 2012
Financial Assets		
Cash and cash equivalents	3,540,306.92	3,328,160.00
Investments (note)	1,981,640.18	1,979,321.28
Accounts receivable	285,116.10	548,602.00
Prepaid Expenses	-	-
Long-term investments	33,048.00	33,048.00
	<u>5,840,111.20</u>	<u>5,889,131.28</u>
Restricted Assets (Note)		
Restricted Shares	311.00	-
Forestry	11,654.45	11,654.45
RLSN	-	123,032.00
Kent	-	55,390.00
MSN	394,906.38	409,821.68
Rondeau	588.55	2,389.64
Downsizing	24,759.79	25,071.00
Cash and cash equivalents	432,220.17	627,358.77
Accounts receivable - Stewardship Programs	-	113,395.85
	<u>432,220.17</u>	<u>740,754.62</u>
Total Financial Assets	<u>6,272,331.37</u>	<u>6,629,885.90</u>
Financial Liabilities		
Accounts payable and accrued liabilities	106,580.89	402,355.00
Accounts payable and accrued liabilities - Stewardship Programs	-	179,749.00
Deferred revenue	139,079.32	1,099,462.27
Due to Stewardship Programs (Note & Statement)	395,494.93	524,280.00
Total Financial Liabilities	<u>641,155.14</u>	<u>2,205,846.27</u>
Net Financial Assets	<u>5,631,176.23</u>	<u>4,424,039.63</u>
Non-Financial Assets		
Tangible Capital Assets, net of accumulated amortization (Notes & Schedule)	20,284,493.88	20,284,493.00
	<u>20,284,493.88</u>	<u>20,284,493.00</u>
Net Assets	<u>25,915,670.11</u>	<u>24,708,532.63</u>
Conservation Authority Position		
Reserves and reserve funds (Statement 2 & 3)	5,631,174.86	4,424,039.00
Net Tangible Capital Assets	20,284,492.81	20,284,493.00
Total Conservation Authority Position	<u>25,915,667.67</u>	<u>24,708,532.00</u>

ST. CLAIR REGION CONSERVATION AUTHORITY
Statement of Operations
AS AT SEPTEMBER 31, 2013

	2013 Budget	2013	2012 Audit
Revenue			
Government Grants			
Section 39	384,841.00	310,003.00	310,003.00
Other	814,750.00	535,364.41	1,322,475.00
Municipal levies			
General	693,415.00	842,407.37	593,691.00
Other	358,285.00	320,811.32	442,500.00
Other Revenue			
Contributions	128,750.00	69,183.24	91,146.00
Miscellaneous	1,578,625.00	1,790,178.73	1,197,923.00
Interest	74,000.00	24,519.72	110,457.00
Conservation areas (Excluding Municipal Levy)	973,700.00	970,301.02	937,616.28
Transfers from reserves			
General	-	-	
Unrealized gain (loss) on held-for-trading investments	-	-	5,892.00
Realized gain (loss) on held for trading investments			1,040.00
	5,006,366.00	4,862,768.81	4,998,879.28
 Expenditures			
Administration, Schedule 1	650,750.00	498,953.98	476,091.00
Capital development, Schedule 1	500,200.00	414,678.39	886,273.00
Operating, Schedule 2	2,694,219.00	1,688,512.19	2,479,070.00
Property management, Schedule 2	267,000.00	250,470.93	145,166.77
Conservation area maintenance, Schedule 3	941,700.00	803,017.46	913,598.57
	5,053,869.00	3,655,632.95	4,900,199.34
 Excess (deficiency) of revenues over expenditures before adjustments	- 47,503.00	1,207,135.86	- 98,679.94
 Adjustments for Tangible Capital Assets			
Acquisition of tangible capital assets	-	-	345,355.63
Amortization of tangible capital assets	-	-	506,202.00
Gain/(loss) on sale of tangible capital assets	-	-	3,090.00
Proceeds on sale of tangible capital assets	-	-	3,250.00
	-	-	167,186.37
 Excess (deficiency) of revenues over expenditures before adjustments	- 47,503.00	1,207,135.86	- 68,506.43

ST. CLAIR REGION CONSERVATION AUTHORITY
Statement of Cash Flows
AS AT SEPTEMBER 31, 2013

12.(i)

	2013	2012
		Audit
Cash provided by (used in)		
Operating activities		
Excess of revenue over expenditure (Statement 4)	1,207,135.86	- 68,506.43
Add items not involving cash:		
Amortization of tangible capital assets		506,202.00
Loss/(Gain) on disposal of tangible capital assets		3,090.00
Realized (gain) loss on held for trading investments		1,040.00
Unrealized (gain) loss on held for trading investments		5,892.00
	<u>1,207,135.86</u>	<u>447,717.57</u>
 Net changes in non-cash working capital balances:		
Accounts receivable	263,485.90	- 62,546.00
Accounts receivable - Stewardship Programs	113,395.85	- 48,342.00
Prepaid expenses	-	2,355.00
Accounts payable and accrued liabilities	- 295,774.11	160,555.00
Accounts payable and accrued liabilities - Stewardship Programs	- 179,749.00	- 35,196.00
Deferred revenue	- 960,382.95	58,128.00
Due to stewardship programs	- 128,785.07	- 126,751.00
	<u>19,326.48</u>	<u>395,920.57</u>
 Investing activities		
Purchase of investments	- 2,318.90	- 520,960.00
Proceeds from sale of investments	-	400,000.00
Long-term investments	-	- 5,178.00
	<u>- 2,318.90</u>	<u>- 126,138.00</u>
 Capital activities		
Acquisition of tangible capital assets	-	- 345,356.00
Proceeds on disposal of tangible capital assets	-	3,250.00
	<u>-</u>	<u>- 342,106.00</u>
 Increase (decrease) in cash and cash equivalents	 17,007.58	 - 72,323.43
 Cash and cash equivalents, beginning of year	 3,955,517.57	 4,027,841.00
 Cash and cash equivalents, end of year	 <u>3,972,525.15</u>	 <u>3,955,517.57</u>
 Represented by:		
Cash and cash equivalents	3,540,306.92	3,328,160.00
Restricted cash and cash equivalents	24,759.79	36,725.00
Stewardship Programs cash and cash equivalents	407,460.38	590,633.00
	<u>3,972,527.09</u>	<u>3,955,518.00</u>

ST. CLAIR REGION CONSERVATION AUTHORITY
 CASH DISBURSEMENTS FROM SEPT. 1 TO Sept. 30, 2013

12. (ii)
 D. Brodie

Chq. No.	Payment Date	Vendor	Description	Payment Amount
15117	12/09/2013	21 SHELL & VARIETY	Fuel	\$ 620.00
15118	12/09/2013	4IMPRINT, INC.	Promotional Products	\$ 1,350.94
15119	12/09/2013	ARCTIC GLACIER INC.	Ice - CA's	\$ 325.50
15120	12/09/2013	BATTLEFIELD EQUIPMENT RENTALS	Equipment Rental	\$ 27.05
15121	12/09/2013	BF ENVIRONMENTAL CONSULTANTS LTD.	Wetland & Erosion	\$ 25,828.13
15122	12/09/2013	CANPAR TRANSPORT L.P.	Courier	\$ 21.09
15123	12/09/2013	CENTRAL SANITATION	portables	\$ 276.85
15124	12/09/2013	DALLAS CUNDICK	expenses	\$ 49.50
15125	12/09/2013	ENTERPRISE RENT-A-CAR CANADA LIMITED	Vehicles - Laravacide	\$ 4,011.47
15126	12/09/2013	FONTASY SIGN & DISPLAY INC.	Signs	\$ 1,711.95
15127	12/09/2013	FOREST CITY LEASING	Photocopier	\$ 293.80
15128	12/09/2013	GERBER ELECTRIC	Electrical Work	\$ 655.40
15129	12/09/2013	GOLD CREEK FARMS LTD.	Pheasant Hunt - MSC	\$ 300.00
15130	12/09/2013	ERNIE HERRINGTON	Gravel -CA's	\$ 57,318.12
15131	12/09/2013	H.R. DESA ENTERPRISES LTD.	Worms - CA's	\$ 146.90
15132	12/09/2013	LEATHA JONES	Bingo	\$ 380.00
15133	12/09/2013	KENN'S PRINTING LTD.	Printing phamplets	\$ 73.45
15134	12/09/2013	KYIS EMBROIDERY	Logo on clothes	\$ 81.36
15135	12/09/2013	Lawrie LaChapelle	Property Inq.-Return	\$ 200.00
15136	12/09/2013	PETROLIA HOME HARDWARE	Supplies	\$ 92.06
15137	12/09/2013	PODOLINSKY FARM EQUIPMENT	Parts	\$ 100.13
15138	12/09/2013	PUROLATOR COURIER	Courier	\$ 43.21
15139	12/09/2013	Rural Lambton Stewardship Network	Transfer of Grant	\$ 3,955.00
15140	12/09/2013	SAGE ACCPAC CANADA INC.	Gold Support Package	\$ 2,563.69
15141	12/09/2013	SGS CANADA INC.	Water Samples-Lambton	\$ 1,322.10
15142	12/09/2013	JEFF SHARP	Expenses	\$ 251.91
15143	12/09/2013	SUPERIOR PROPANE INC.	Propane - CA's	\$ 1,862.91
15144	12/09/2013	STRATHROY HOME HARDWARE BLDG CENTRE	Supplies	\$ 423.72
15145	12/09/2013	STRATHROY TIRE SALES & SERVICE	Tire Service	\$ 139.54
15146	12/09/2013	Technosave Inc.	Phone cases	\$ 90.36

15154	12/09/2013	TOWNSHIP OF ST. CLAIR	Water Bill	\$	55.92
15155	12/09/2013	TSC STORES L.P.	Supplies	\$	248.59
15156	12/09/2013	BILL TURNER	Expenses	\$	158.76
15157	12/09/2013	VALLEY LAWN CARE	Grass Cutting	\$	3,401.30
15158	12/09/2013	VAN COMMUNICATIONS	Batteries	\$	141.25
15159	12/09/2013	WARWICK GAS & VARIETY	Fuel	\$	833.01
15160	12/09/2013	WATFORD HOME HARDWARE BLDG CENTRE	Lumber, Supplies	\$	1,426.11
15161	18/09/2013	RECEIVER GENERAL	Payroll Taxes	\$	1,812.34
15162	25/09/2013	LARRY MACDONALD CHEV OLDS	2013 Chev. Traverse	\$	29,057.95
15163	30/09/2013	Aamjiwnaang First Nation Environment - 478	Talford Creek-Staffing	\$	4,915.00
15164	30/09/2013	ADVANCED BLDG.MATERIALS INC.	Lumber & Supplies	\$	1,872.41
15165	30/09/2013	AGRIS CO-OPERATIVE LTD.	Herbicides	\$	213.34
15166	30/09/2013	Ajah	Database License	\$	1,015.87
15167	30/09/2013	ARBORTECH PROFS. TREE CARE	Tree Removal -CA's	\$	870.10
15168	30/09/2013	ARCTIC GLACIER INC.	Ice	\$	37.20
15169	30/09/2013	1841792 ONT. INC., BILL BRON ELECTRIC	Electrical Work	\$	589.67
15170	30/09/2013	P.CASH-D.BRODIE	Petty Cash	\$	372.16
15171	30/09/2013	BUFFETT, TAYLOR & ASSC. INS. AGENCIES	Group Insurance	\$	9,742.37
15172	30/09/2013	Canadian Linen & Uniiform	Floor Mats	\$	57.36
15173	30/09/2013	CENTRAL SANITATION	Portables	\$	632.80
15174	30/09/2013	STEPHEN CLARK	Expenses	\$	259.01
15175	30/09/2013	COINAMATIC	Coin Machine - CA's	\$	58.26
15176	30/09/2013	Cranberry's Catering	Meeting Lunch	\$	148.38
15177	30/09/2013	COUNTY OF LAMBTON	Event Tickets	\$	50.00
15178	30/09/2013	DALLAS CUNDICK	Expenses	\$	41.80
15179	30/09/2013	Lynn Denning	Grant - tree planting	\$	951.50
15180	30/09/2013	CHRIS DURAND	Expenses	\$	719.42
15181	30/09/2013	ENVIRON INTERNATIONAL CORP.	St. Clair River	\$	1,139.50
15182	30/09/2013	FOREST AGRI SERVICES LTD.	Herbicides	\$	417.47
15183	30/09/2013	FOREST CITY BUSINESS EQUIPMENT	Equipment Leasing	\$	1,822.86
15184	30/09/2013	ERNIE HERRINGTON	Gravel - CA's	\$	1,695.00
15185	30/09/2013	JEG'S	Oil for Vechiles-AWC	\$	41.66
15186	30/09/2013	KYIS EMBROIDERY	Logos - clothing	\$	40.68
15187	30/09/2013	LAKESIDE GRAIN & FEED LTD.	Herbicides	\$	148.40
15188	30/09/2013	LAMBTON KENT FARM IMPLEMENTS LTD	Parts & Supplies	\$	395.44
15189	30/09/2013	LANDSTRA CATERING	Meeting Lunch	\$	389.51
15190	30/09/2013	Joel Lapier	River Trail Sign	\$	758.06
15191	30/09/2013	Laurya Farms	Grant-cover crop	\$	395.68
15192	30/09/2013	LOBLAW COMPANIES LIMITED	Meeting Supplies	\$	131.80

15193	30/09/2013	Heather Long	Expenses	\$	157.64
15194	30/09/2013	Marks Work Warehouse	Staff - Unfforms	\$	301.10
15195	30/09/2013	BRIAN MCDUGALL	Expenses	\$	793.44
15196	30/09/2013	Power Plumbing & Heating	Plumbing - Office	\$	113.00
15197	30/09/2013	TRACY PRINCE	Expenses	\$	325.73
15198	30/09/2013	PUROLATOR COURIER	Courier	\$	139.15
15199	30/09/2013	RIVERVIEW	Vehicle Repairs	\$	452.82
15200	30/09/2013	Rogers Cable Communications Inc	Internet	\$	311.47
15201	30/09/2013	ALISON SEIDLER	Expenses	\$	52.01
15202	30/09/2013	JEFF SHARP	Expenses	\$	70.00
15203	30/09/2013	SIGNS AND DESIGNS	Signs	\$	1,457.70
15204	30/09/2013	ST.CLAIR REGION CON.FOUNDATION	Memorial Donations	\$	1,110.00
15205	30/09/2013	STRATHROY HOME HARDWARE BLDG CENTRE	Supplies	\$	434.15
15206	30/09/2013	SUPERIOR COMPUTER SALES INC.	Colour Printer Cartridges	\$	1,000.05
15207	30/09/2013	THREE MAPLES VARIETY	Fuel - CA's	\$	614.17
15208	30/09/2013	MIKE TIZZARD	Expenses	\$	211.78
15209	30/09/2013	Toneguzzo Trucking & Excavating	Excavating	\$	876.88
15210	30/09/2013	TOWN OF PLYMPTON-WYOMING	Final Taxes	\$	7,705.56
15211	30/09/2013	TOWNSHIP OF WARWICK	Final Taxes	\$	928.38
15212	30/09/2013	TOWNSHIP OF DAWN-EUPHEMIA	Final Taxes	\$	584.90
15213	30/09/2013	Vokes Bros. (818360 ONT. LTD.)	Farm- Tile Repair	\$	3,955.00
15214	30/09/2013	WASHINGTON POOLS & SPAS	Pool Supplies - CA's	\$	508.50
15215	30/09/2013	WASTE MANAGEMENT OF CANADA CORP.	Waste Removal - CA's	\$	2,283.68
15216	30/09/2013	SHANE WHITE	Expenses	\$	84.65
15218	30/09/2013	WORKPLACE SAFETY & INS. BOARD	Sept. Remittance	\$	3,910.26
15219	30/09/2013	Yellow Pages Group	Advertising	\$	24.35

TOTAL DISBURSEMENTS - BANK NO. 1 -

\$ 199,980.45

INTERNET BANKING - BANK NO. 1 -

Trans.

Number	Date	Vendor	Description	Payment
9001	30/09/2013	BELL CANADA	Phone	\$ 87.00
9002	30/09/2013	BELL MOBILITY CELLULAR	Mobile Phones	\$ 58.79
9003	30/09/2013	BLUEWATER POWER	Hydro	\$ 148.28
9004	30/09/2013	BROOKE TELECOM CO-OP	Telephone	\$ 605.11

9005	30/09/2013	EASTLINK	Internet	\$	45.15
9006	30/09/2013	ENTEGRUS SERVICES INC. (CHATHAM-KENT)	Hydro	\$	92.62
9007	30/09/2013	ENTEGRUS SERVICES INC. (MIDDLESEX)	Hydro	\$	1,020.90
9008	30/09/2013	EXECULINK INTERNET INC.-EFT	Internet	\$	1,610.62
9010	30/09/2013	HYDRO ONE	Hydro	\$	27,394.87
9011	30/09/2013	PETRO CANADA INC.	Fuel	\$	3,612.77
9012	30/09/2013	ROGERS WIRELESS	Internet	\$	1,205.00
9013	30/09/2013	STAPLES BUSINESS DEPOT-EFT	Suplies	\$	90.13
9014	30/09/2013	UNION GAS LIMITED	Heating	\$	47.40
9015	30/09/2013	MASTERCARD	Expenses for Sept.	\$	3,498.74
9016	30/09/2013	ONTARIO MINISTER OF FINANCE	Employer Health Tax	\$	3,637.88
9017	30/09/2013	OMERS	Omers payment	\$	24,557.72
9018	30/09/2013	RECEIVER GENERAL	Payroll Taxes	\$	22,021.05
9019	30/09/2013	RECEIVER GENERAL	Payroll Taxes	\$	<u>23,850.31</u>

TOTAL INTERNET BANKING -

\$ 113,584.34

PAYROLL RUNS FROM SEPT. 1 TO SEPT. 30, 2013

PAYROLL NO. 19 -	\$	77,282.43
PAYROLL NO. 20 -		<u>74,989.72</u>

TOTAL PAYROLL RUNS - SEPT. 1 TO SEPT. 30, 2013

\$ 152,272.15

TOTAL DISBURSEMENTS - SEPT. 1 TO SEPT. 30, 2013

\$ 465,836.94

**2013 GENERAL LEVY SUMMARY
AS OF NOVEMBER 4, 2013**

**GLYSUM2013
Diane Brodie
Nov. 4, 2013**

MUNICIPALITY	GROSS LEVY	PAID TO DATE	OUTSTANDING
-----	-----	-----	-----
Sarnia	\$ 262,119.00	\$ 196,589.25	\$ 65,529.75
Chatham-Kent	85,719.00	85,719.00	0.00
Brooke-Alvinston Twp.	9,478.00	9,478.00	0.00
Dawn Euphemia Twp.	14,084.00	10,563.00	3,521.00
Enniskillen Twp.	10,523.00	10,523.00	0.00
Lambton Shores M.	29,001.00	29,001.00	0.00
Oil Springs V	1,260.00	1,260.00	0.00
Petrolia T	15,908.00	15,908.00	0.00
Plympton-Wyoming T	30,011.00	30,011.00	0.00
Point Edward V	15,307.00	15,307.00	0.00
St. Clair Twp.	67,773.00	67,773.00	0.00
Warwick Twp.	12,388.00	12,388.00	0.00
Adelaide Metcalfe Twp.	9,488.00	9,488.00	0.00
Middlesex Centre Twp.	11,893.00	11,893.00	0.00
Newbury V	941.00	941.00	0.00
Southwest Middlesex M.	6,499.00	6,499.00	0.00
Strathroy-Caradoc M.	49,523.00	49,523.00	0.00
TOTAL	\$ 631,915.00	\$ 562,864.25	\$ 69,050.75
	=====	=====	=====



12.(iv)

St. Clair Region Conservation Authority

2014 Proposed Fees

10/28/2013

Note: All fees include applicable taxes and may be changed by resolution of the Board of Directors

CAMPING FEES	2013	2014
Reservation Fee	\$6.00	\$8.00
Cancellation Fee	\$15.00	\$15.00
Daily, Unserviced	\$34.00	\$34.00
Daily, Serviced	\$38.00	\$39.50
60 buck weekend (AWC & LCH on designated weekends)	\$60.00	\$60.00
Weekly, Unserviced	\$204.00	\$204.00
Weekly, Serviced	\$228.00	\$237.00
Monthly, Unserviced	\$567.00	\$612.00
Monthly, Serviced	\$657.00	\$710.00
Seasonal Camping Fees – April 30, 2014 to October 15, 2014	2013	2014
Full Payment made on or before April 15 2014 , 15 AMP service	\$1,725.00	\$1,790.00
Full Payment made on or before April 15 2014 , 30 AMP service	\$1,895.00	\$1,970.00
First instalment payment on or before April 15 2014	\$1,250.00	\$1,300.00
Second instalment payment on or before June 1 2014, 15 AMP service	\$510.00	\$525.00
Second instalment payment on or before June 1 2014, 30 AMP service	\$680.00	\$705.00
Half Season, 15 AMP (after August 1)	\$862.50	\$895.00
Half Season, 30 AMP (after August 1)	\$947.50	\$985.00
Quarter Season, 15 AMP (after Sept 1)	\$431.25	\$447.50
Quarter Season, 30 AMP (after Sept 1)	\$489.25	\$492.50
Seasonal late payment fee	\$35.00	\$35.00
Seasonal Campsite deposit (new seasonal camper wanting to reserve site for following season)	\$100.00	\$100.00
Miscellaneous Fees	2013	2014
Overnight Visitors (per person)	\$5.00	\$5.00
Sewage Pump Out per service fee	\$25.00	\$25.00
Sewage Pump Out seasonal fee	\$150.00	\$150.00
Winter Storage for Trailers arriving after Thanksgiving	\$150.00	\$150.00
Exterior fridge/freezer charge	\$125.00	\$150.00
Extra hydro fee for electric golf cart	\$125.00	\$150.00
Golf Cart (day/month)		\$ 5.00/\$30.00
Extra hydro/Exterior fridge/freezer if found during inspection by staff	\$200.00	\$200.00
Ice	\$3.00	\$3.00
Firewood (bundle)	\$7.00	\$7.00
Firewood (1/2 cord)	\$35.00	\$35.00
Firewood (cord)	\$70.00	\$70.00
DAY USE FEES	2013	2014
Vehicle	\$7.00	\$7.00
Pedestrians/Cyclists (16 & over)	\$2.00	\$2.00
Seasonal Day Pass	\$60.00	\$60.00
Buses	\$15.00	\$15.00
Open Pavilion reservation	\$60.00	\$60.00
Closed in Pavilion reservation (Warwick/LC Henderson)	\$100.00	\$100.00
Swimming Daily Fee	\$2.00	\$2.00
Seasonal Swimming Pass - Individual	\$35.00	\$35.00
Seasonal Swimming Pass - Family	\$90.00	\$90.00

CONSERVATION SERVICES FEES		2013	2014
Managed Forest Tax Incentive Program Plan Approvals			
Field Work / Forest Inventory		\$62.00/hr/person	\$75.00/hr/person
Plan Review & Approval Process (including site visit)		\$275.00/plan	\$350.00/plan
Plan Creation & Plan Approval			
Less than 20ac		\$450.00/plan	\$500.00/plan
20-40ac		\$500.00/plan	\$650.00/plan
Greater than 40ac		\$550.00/plan	\$800.00/plan
Timber Management			
Field Work / Site Visit		\$62.00/hr/person	\$62.00/hr/person
Timber Report Creation		\$150.00/person/field day	\$150.00/person/field day
Miscellaneous Fees			
Hunting - McKeough Properties Only (annual permit)		\$55.00	\$55.00
Trapping Permit		\$15.00	\$15.00
Drain Maintenance Program			
Spot spray application for vegetation control in drains		\$100.00/hr + chemical	\$100.00/hr + chemical
Tree Planting (Private Lands) These are guidelines, pricing is dependant on size and location			
Large Stock Program		Cost vary according to size and species	Cost vary according to size and species
Tree Seedlings		Cost vary according to size and species	Cost vary according to size and species
Seedling Tree Planting Services Machine planting:			
Up to 950 trees		\$1.00/tree	\$1.00/tree
Minimum charge for under 1000 trees		\$750.00/site	\$750.00/site
500 - 999 trees		n/a	n/a
1000 – 1950 trees		\$0.92/tree	\$0.92/tree
2000 plus trees		\$0.80/tree	\$0.80/tree
Includes tree planting and initial herbicide application			
Seedling Tree Planting Services Hand plants:			
Up to 500 trees		\$750.00/site	\$750.00/site
500+ trees		\$1.50/tree	\$1.50/tree
Includes tree planting and initial herbicide application			
Herbicide Tending			
0 -1000 trees		\$270.00 /application	\$270.00 /application
1000+ trees -machine sprayer single herbicide		\$0.25/tree/application	\$0.25/tree/application
1000+ trees -back pack single herbicide		\$0.35/tree/application	\$0.35/tree/application
Tank Mixes multiple herbicides		\$0.40/tree/application	\$0.40/tree/application
Tree Species (Subject to Availability)			
Coniferous Trees	Native & Traditional Species - bareroot seedlings - 8 - 12 inches in height		
Deciduous Trees & Shrubs	Native & Traditional Species - bareroot seedlings - 12 - 18 inches in height		

PLANNING SERVICE FEES	2013
Technical Report Review and Background Data Collection/Provision	
Data Requests (plus tax)	
Minimum Base (includes up to 3 data sets) plus \$100.00 per data set***	\$300.00
Report Review and Background Data Collection	
Minor (scoped, small area, potential low impact)	
Report Review – detailed review and provision of comments for Final Reports ie. scoped EIS, geotech, coastal_ 1 lot equiv	\$300.00
Major (large study area, potential high impact) **	
Report Review – detailed review and provision of comments for Final Reports ie. Comprehensive EIS, floodline, coastal , hydrogeology, geotech,)	\$500.00 - \$1000.00
**Authority staff reserve the right to charge technical report review fees over the above noted fees for complex projects or reports covering one or more issues. Costs will be related to multiple technical report reviews, multiple meetings, etc Director and GM to approve fee.	
***data sets - regulation limit mapping, ESA mapping & info, wetland mapping & info, benthic sampling data, water quality data, fish sampling data	
GIS Services (plus tax)	
Technical Reports – Adobe digital (pdf) format on CD (if available)	\$55.00
Plotting Services	\$9.00/sq ft
GIS Service Fees	\$90.00/hr
Digital Aerial Photography (requires license agreement) per tile	\$55.00
Admin fee for digital data transfers	\$100.00
Municipal Planning Advisory Service Fees	
Severance (per lot created for development purposes)	\$200.00
Minor Variance	\$100.00
Official Plan and Zoning Bylaws Amendments	\$200.00
Draft Plan of Subdivision (condo)	
a) 2-4 Units	\$500.00
b) 5-15 Units	\$1,000.00
c) > 16 Units	\$2,500.00
Stormwater Management Plans	\$500.00
Site Inspection	\$100.00
Development Inquiry - Hazards; fee reduced off Regs app; fee contingent on no change & within 2 year limit	\$200.00
Development Inquiry - Heritage	
Legal Inquiry	\$100.00
Site Assessment (ie Terrestrial/Aquatic Ecosystem Review) plus reporting (2 hrs min)	\$90/hr plus exp.

2014
\$300.00
\$300.00
\$500.00 - \$1000.00
\$55.00
\$9.00/sq ft
\$90.00/hr
\$55.00
\$100.00
\$200.00
\$100.00
\$200.00
\$500.00
\$1,000.00
\$2,500.00
\$500.00
\$100.00
\$200.00
\$100.00
\$100.00
\$90/hr plus exp.







Ontario Regulation 171/06 Review Fees	2013
Application	
Reg fee reduced by Development inquiry fee if applicable. \$50.00 off Reg app, if Planning fee applied.	
MINOR* to cover site inspection, costs email clearances	\$150.00
STANDARD** Alter a regulated area, shoreline or watercourse (ie no engineering)	\$300.00
MAJOR*** Alter a regulated area, shoreline or watercourse (ie engineering required)	\$600.00
STANDARD Addition, accessory building, or reconstruct 500ft ² (46.5m ²) or less in size	\$300.00
STANDARD Construct primary building, addition, accessory buildings or reconstruct greater then 500ft ² (46.5m ²) in size	\$400.00
MAJOR Construct primary building, addition, accessory buildings or reconstruct greater then 500ft ² (46.5m ²) in size	\$800.00
Construct a structure or alter an area of interference of a wetland	
a) Major New, but a prohibition, very rarely rec'd, sig impact	\$800.00
b) Standard revised to keep consistent with policy, tech report, EIS review	\$500.00
b) Minor	\$100.00
DART review - Minor	
DART review - Major (wetland)	
Other Fees	
Golf course development/realignment	\$600.00
Application renewal	\$50.00
Application revisions beyond 2 resubmissions provided checklist acknowledged and notification provided in writing if checklist provided	25% fee
Pipeline or Utility directional drill under a watercourse	\$100.00/crossing
Review of applications where work has proceeded without authorization	100% surcharge
Multi-lot or Multi Unit Development	\$400.00
*Minor- projects for which a letter/response is required from SCRCA. (e.g. is located in Regulated area, may require site visit, may affect the program policy interests. Clearance required. Works that are considered minor in nature, identified by factors such as estimated project cost, location & potential municipal road allowance work, nonindustrial docks that meet policy	
**Standard - projects that meet SCRCA policies, routine technical analysis, may or may not require engineering	
***Major - projects that do not meet SCRCA policies, engineering often required. Not routine, requires CA/peer review engineering/ecological/fisheries review. May need review at Regs Committee +/- Board of Directors	

2014
\$150.00
\$300.00
\$600.00
\$300.00
\$400.00
\$800.00
\$800.00
\$500.00
\$100.00
\$200.00
\$600.00
\$600.00
\$50.00
25% fee
\$100.00/crossing
100% surcharge
\$400.00
n or ial degreee of hazard ie.
ries

ADMINISTRATION FEES	2013	2014
Administrative Fees negotiated by contract		
NSF Cheques	\$45.00	\$45.00
Processing Fee - Oil & Gas Long term		
a) Oil & Gas Long Term	\$340.00	\$340.00
b) Annual	\$550.00	\$550.00

EDUCATION FEES	2013/2014	2014/2015
Half Day Class/Student	\$4.50	\$4.50
Full Day Class/student	\$8.50	\$8.50
Minimum Charge for other programs	\$60.00	\$60.00
In Class program (without sponsors) first class	\$100.00	\$100.00
In Class program (without sponsors) second class same school	\$75.00	\$75.00

WATERSHED SERVICES TECHNICAL FEES	2013	2014
Technical Reports - Adobe digital (pdf) format on CD	\$20.00	\$20.00
Data and Information Requests		
a) HEC II, HYMO, Hyrdo Pak, Streamgauge, Precipitation, Meteorological or Flow Data	\$65.00	\$65.00
Additional cost for data or information collection in excess of	\$50.00/hr	\$50.00/hr
b) one hour		
c) Additional cost for CDs or printed reports	\$20.00	\$20.00



2014 Proposed Budget

Dated November 6, 2013

1. Quick Facts (pg. 2-3)
2. 2014 Budget Highlights (pg. 3)
3. 2014 Summary Budget (pg. 4-5)
4. 2014 Expanded Budget (pg. 6-7)
5. 2014 Levy Assessment (CVA) - Schedule "A" (pg. 8-9)
6. 2014 Conservation Areas Maintenance and Operation Budget - Schedule "B" (pg.10-11)
7. 2014 Municipal Funding Summary - Schedule "C" (pg.12-13)
8. 2014 Conservation Area's Capital Projects (pg. 14-16)
9. 2014 Outline of Erosion Control Structure Maintenance (pg. 17-19)
10. Notes (pg. 19)

St. Clair Region Conservation Authority

Quick Facts

General:

- 17 member municipalities from Lambton and Middlesex Counties and the cities of Sarnia and Chatham-Kent (see member directory for full listing)
- 20 members on the Board of Directors appointed by municipalities (see directory)
- 14 watersheds - Sydenham River with its East and North branches, 13 smaller named watersheds entering Lake Huron, St. Clair River and Lake St. Clair.
- of the 36 Conservation Authorities in the province, the St. Clair Region ranks:
 - **9th largest in area (4,100 km²)**
 - **16th in population (152,077 within the watershed)**
 - **35th in general levy (\$3.22 per capita) in 2013**
 - **6th in receipt of provincial grant from the Ministry of Natural Resources**

Land:

- owns 4,200 acres of property
- manages another 1,340 acres for the County of Lambton
- manages 15 properties (800 acres) for our Conservation Foundation
- has 16 Conservation Areas including 3 regional campgrounds - 522 serviced campsites
- over 200,000 visitors to Conservation Areas in 2013

Water Management:

- has the largest flood control dam and diversion in the province (McKeough Floodway)
- 11 recreation dams at 8 Conservation Areas
- assisting Chatham-Kent with maintenance of nearly 20 km of dykes
- assisting Sarnia, Point Edward, St. Clair Township, Chatham-Kent in maintaining almost 10 km of shore protection and erosion control structures
- in excess of \$52 million invested in conservation lands and flood and erosion control structures

Planning/Regulations/GIS:

- provided technical and professional comments on over 500 municipal planning and regulation matters in 2013
- commented on provincially generated policy related to natural hazards and heritage features
- managing AOC St. Clair River program
- internal and external GIS computer mapping needs for Authority staff and partners

Education/Communication:

- helped over 10,000 children discover conservation through outdoor education
- work in partnership with over 100 groups and thousands of individuals who support conservation and environmental programs throughout the watershed

Biology/Research:

- science based research supporting Species at Risk, benthic water quality monitoring, groundwater monitoring, fisheries, municipal drain classifications

Forestry/Healthy Watersheds:

- planted over 3.4 million trees over the last three decades
- constructed over 100 acres of wetlands
- provides technical and professional services to municipalities for land management, erosion control, urban forestry, road side tree planting, private woodlot management
- provided \$2 million in grants to farmers and other landowners to implement Best Management Practices since 2000

Finances:

- 2014 Budget - \$5,471,061
- 2014 General Levy - \$658,935 to be shared by the 17 member municipalities
- General Levy accounts for just 12.0% of the Authority's Budget

2014 Budget Highlights

We offer the following highlights for your information:

- General Levy for 2014 is \$658,935 to be shared by the 17 member municipalities
- Matching and Non-Matching Levy for 2014 are budgeted to be a \$27,020 increase from 2013 to be shared by the 17 member municipalities
- Provincial grants to Conservation Authorities support flood control, planning, administration, legal expenses and technical studies
- In addition, grants continue to be available for studies, inspection, major maintenance, minor maintenance and preventative maintenance of water and erosion control structures to protect significant investments made by the province and municipalities
- St. Clair Region has in excess of \$52 million (at time of construction) invested in flood and erosion control structures and lands
- Grants applied for in the business plan used to develop the budget
- However, the received grants may not be as indicated in the budget. Upon confirmation of approved grants, the budget will be revised to reflect those grants with the combined levy (matching and non-matching) remaining unchanged.
- Detailed budgets for each program or project are available upon request

SCRA Summary Budget -

Proposed - November 2013

	Budget	Provincial Grant	Provincial Grant Reserves
Flood Control Operations & Maintenance	\$ 538,500	\$ 246,000	
Erosion Control Operations & Maintenance	\$ 41,000	\$ 20,500	
WECI Capital Projects	\$ 452,952		
Source Protection Planning	\$ 200,000		
Planning and Regulations	\$ 357,000	\$ 15,000	
TS - Hazard & Flood Information Management	\$ 46,000	\$ 4,500	
TS -IPZ	\$ 20,000		
TS - Aquatic systems monitoring	\$ 85,000		
TS - Healthy Watershed	\$ 59,000		
AOC Management	\$ 177,500		
Conservation Services/Healthy Watershed	\$ 573,000		
MNR Species At Risk	\$ 210,124		
Recreation	\$ 1,045,426		
CA Capital Development	\$ 94,700		
Property Management	\$ 296,029		
Information and Education	\$ 189,630		
IT Capital	\$ 19,200		
Equipment	\$ 72,000		
Legal	\$ 1,000	\$ 500	
Administration	\$ 623,000	\$ 23,500	
Total CA Budget	\$ 5,101,061	\$ 310,000	\$ -
Employment Programs	\$ 220,000		
Stewardship Programs	\$ 150,000		
Total Budget	\$ 5,471,061	\$ 310,000	\$ -

* The Authority assists in the administration of the Employment and Stewardship programs, therefore these items must be approved under the Authority's budget for signing authorization. The funds are only transferred in and out with the Authority having no direct spending controls and is therefore not considered in applying for grant.

* Detailed budgets of each project / program are available upon request

SCRA Summary Budget -

Proposed - November 2013

Other Grant/Program Funds	Matching Levy	Non Matching Levy	Special Levy	Revenues	Reserves
\$ 12,500	\$ 230,000	\$ 500	\$ 41,000	\$ 8,500	
			\$ 20,500		
\$ 122,000			\$ 160,000	\$ 170,952	
\$ 200,000					
	\$ 15,000	\$ 144,000	\$ 45,000	\$ 73,000	\$ 65,000
\$ 37,000	\$ 4,500				
\$ 20,000				\$ -	
\$ 3,500		\$ 31,500		\$ 50,000	
\$ 59,000					
\$ 177,500					
\$ 77,000				\$ 481,000	\$ 15,000
\$ 160,124				\$ 50,000	
\$ 12,676		\$ 12,935	\$ 61,765	\$ 958,050	\$ -
					\$ 94,700
\$ 35,000				\$ 251,029	\$ 10,000
\$ 11,500		\$ 70,000		\$ 70,000	\$ 38,130
				\$ 19,200	
				\$ 72,000	
	\$ 500				
	\$ 23,500	\$ 126,500		\$ 314,500	\$ 135,000
\$ 927,800	\$ 273,500	\$ 385,435	\$ 328,265	\$ 2,518,231	\$ 357,830
	\$ -	\$ -	\$ -	\$ 220,000	\$ -
	\$ -	\$ -	\$ -	\$ 150,000	\$ -
\$ 927,800	\$ 273,500	\$ 385,435	\$ 328,265	\$ 2,888,231	\$ 357,830

SCRA Summary Budget -

Proposed - November 2013

	Budget	Provincial Grant	Provincial Grant Reserve	Other Grant/Program Funds	Matching Levy
Flood Control Operations and Maintenance	\$538,500	\$246,000	\$0	\$12,500	\$230,000
Erosion Control Operations & Maintenance	\$41,000	\$20,500	\$0	\$0	\$0
Capital Projects	\$452,952	\$0	\$0	\$122,000	\$0
Source Protection Planning	\$200,000	\$0	\$0	\$200,000	\$0
Planning and Regulations	\$357,000	\$15,000	\$0	\$0	\$15,000
TS - Hazard & Flood Information Management	\$46,000	\$4,500	\$0	\$37,000	\$4,500
TS - IPZ	\$20,000	\$0	\$0	\$20,000	\$0
TS - Aquatic systems monitoring	\$85,000	\$0	\$0	\$3,500	\$0
TS - Healthy Watershed	\$59,000	\$0	\$0	\$59,000	\$0
St. Clair AOC Management	\$177,500	\$0	\$0	\$177,500	\$0
Conservation Services	\$573,000	\$0	\$0	\$77,000	\$0
MNR Species at Risk	\$210,124	\$0	\$0	\$160,124	\$0
Recreation	\$1,045,426	\$0	\$0	\$12,676	\$0
Capital Development	\$94,700	\$0	\$0	\$0	\$0
Property Management	\$296,029	\$0	\$0	\$35,000	\$0
Information and Education	\$189,630	\$0	\$0	\$11,500	\$0
IT Capital	\$19,200	\$0	\$0	\$0	\$0
Equipment	\$72,000	\$0	\$0	\$0	\$0
Legal	\$1,000	\$500	\$0	\$0	\$500
Administration	\$623,000	\$23,500	\$0	\$0	\$23,500
Total CA Budget	\$5,101,061	\$310,000	\$0	\$927,800	\$273,500
Employment Programs	\$220,000	\$0	\$0	\$0	\$0
Stewardship Programs	\$150,000	\$0	\$0	\$0	\$0
Total Budget	\$5,471,061	\$310,000	\$0	\$927,800	\$273,500

SCRA Summary Budget -

Proposed - November 2013

Non Matching Levy	Special Levy	Revenues	Reserves
\$500	St. Clair - McK Maint \$2,000 C-K- McK Maint - \$38,000, Arda - \$1,000	Oil & Gas Revenue - \$2,500 Other Income - \$6,000	\$0
\$0	Sarnia - SECP \$13,000 Pt. Edward - PEECP \$2,000 C-K - Dres RetWalls&CECP \$500 Sarnia - SBECP \$2,000 C-K - Wallaceburg Walls \$1,000 Strathroy - StrECP \$1,000 St. Clair - Corrunna Ret Wall \$1,000		\$0
\$0	St. Clair - Cathcart Park \$160,000	Carryforwards - \$170,952	\$0
\$0			\$0
\$144,000	All Municipalities based on General Levy Split \$45,000 (3D Mapping)	Fees - \$73,000	\$65,000
\$0			\$0
\$0			\$0
\$31,500		Carryforward \$50,000	\$0
\$0			\$0
\$0			\$0
\$0		Fees - \$406,000 Carryforward \$75,000	\$15,000
\$0			\$0
\$12,935	Shetland - Dawn-Euphemia \$7,085 Wawanosh - City of Sarnia \$8,550 Clark Wright - Strathroy-Caradoc \$1,600 Bridgeview - Town of Petrolia \$900 Coldstream - Middlesex Centre \$1,300 Crothers - Chatham-Kent \$1,600 Stranak - Chatham-Kent \$8,000 Peers - Chatham-Kent \$1,150 Strathroy - Strathroy-Caradoc \$18,500 McEwen - Plympton-Wyoming \$10,980 Dodge - Lambton Shores \$2,100	Fees - \$956,800 Foundation - \$1,250	\$0
\$0			\$94,700
\$0	\$0	Rental Income - \$185,000 County of Lambton - \$45,000 Carryforward - \$1,029 Revenue - \$20,000	\$10,000
\$70,000	\$0	Fees - \$20,000 Donations - \$50,000	\$38,130
\$0		\$19,200	\$0
\$0		\$72,000	\$0
\$0			\$0
\$126,500		Rental Income - \$12,000 Interest Income - \$65,000 Foundation - \$9,000 Allocated Admin Costs - \$60,000 Adimn Fees - \$53,500 Oil & Gas Revenue - \$57,000 Carryforward - \$58,000	\$135,000
\$385,435	\$328,265	\$2,518,231	\$357,830
\$0	\$0	\$220,000	\$0
\$0	\$0	\$150,000	\$0
\$385,435	\$328,265	\$2,888,231	\$357,830

Schedule "A"
2014 Levy Assessment

Municipality	2013 Current Value Assessment (modified) in Watershed	2013 CVA Apportionment %
Township of Adelaide Metcalfe	\$ 285,695,823	1.5015
Township Brooke-Alvinston	\$ 285,377,725	1.4998
Municipality Chatham-Kent	\$ 2,581,047,548	13.5649
Township Dawn-Euphemia	\$ 424,074,441	2.2288
Township Enniskillen	\$ 316,851,600	1.6652
Municipality Lambton Shores	\$ 873,252,452	4.5895
Township Middlesex Centre	\$ 358,101,574	1.8820
Village Newbury	\$ 28,335,080	0.1489
Village Oil Springs	\$ 37,953,290	0.1995
Town Petrolia	\$ 479,002,968	2.5174
Town Plympton-Wyoming	\$ 903,643,585	4.7492
Village Point Edward	\$ 460,908,134	2.4223
City Sarnia	\$ 7,892,572,844	41.4801
Municipality Southwest Middlesex	\$ 195,688,822	1.0285
Township St. Clair	\$ 2,040,695,392	10.7250
Township Strathroy - Caradoc	\$ 1,491,157,742	7.8369
Township Warwick	\$ 373,023,562	1.9605
	\$ 19,027,382,580	100

2014 Municipal General Levy : \$28,170 increase over 2013

2014 Current Value Assessment (modified) in Watershed	2014 CVA Apportionment %
\$ 346,974,033	1.6777
\$ 326,493,830	1.5786
\$ 2,739,470,190	13.2456
\$ 505,645,240	2.4448
\$ 355,691,445	1.7198
\$ 1,005,236,898	4.8604
\$ 425,889,039	2.0592
\$ 32,486,295	0.1571
\$ 41,716,860	0.2017
\$ 499,484,350	2.4151
\$ 1,037,364,357	5.0158
\$ 495,957,898	2.3980
\$ 8,239,344,974	39.8381
\$ 232,361,219	1.1235
\$ 2,297,368,216	11.1080
\$ 1,685,066,728	8.1475
\$ 415,524,811	2.0091
\$ 20,682,076,382	100

2013 General Levy	2014 General Levy
\$ 9,488	\$ 11,055
\$ 9,478	\$ 10,402
\$ 85,719	\$ 87,280
\$ 14,084	\$ 16,110
\$ 10,523	\$ 11,332
\$ 29,001	\$ 32,027
\$ 11,893	\$ 13,569
\$ 941	\$ 1,035
\$ 1,260	\$ 1,329
\$ 15,908	\$ 15,914
\$ 30,011	\$ 33,051
\$ 15,307	\$ 15,801
\$ 262,119	\$ 262,507
\$ 6,499	\$ 7,403
\$ 67,773	\$ 73,194
\$ 49,523	\$ 53,687
\$ 12,388	\$ 13,239
\$ 631,915	\$ 658,935

Schedule "B"

2014 Conservation Area Maintenance and Operation Budget - November 2013

	2013 Budget	2014 Budget	Special Levy	Non-Matching General Levy
403- Shetland	\$ 7,650	\$ 7,850	\$7,085 (Dawn-Euphemia)	\$ 765
404 - Sinclair	\$ 500	\$ 500		
405 - Wawanosh	\$ 9,500	\$ 9,500	\$8,550 (City of Sarnia)	\$ 950
413 - Clark Wright	\$ 2,350	\$ 2,350	\$1,600 (Strathroy-Caradoc)	
416 - -Bridgeview	\$ 900	\$ 900	\$900 (Town of Petrolia)	
417 - Campbell	\$ 218,400	\$ 251,150		
419 - Coldstream	\$ 1,400	\$ 1,300	\$1,300 (Middlesex Centre)	
448 - Crothers	\$ 1,400	\$ 1,600	\$1,600 (Chatham-Kent)	
455 – Peers	\$ 0	\$ 13,476	\$1.150 (Chatham-Kent)	
458 - Warwick	\$ 419,900	\$ 448,700		
470 - Stranak	\$ 7,900	\$ 8,000	\$8,000 (Chatham-Kent)	
472 - Henderson	\$ 238,700	\$ 257,300		
474 - Strathroy	\$ 18,500	\$ 18,500	\$18,500 (Strathroy-Caradoc)	
485 - McEwen	\$ 11,300	\$ 12,200	\$10,980 (Plympton-Wyoming)	\$ 1,220
489 - Highland Glen	\$ 9,050	\$ 10,000		\$ 10,000
493 - Dodge	\$ 1,000	\$ 2,100	\$2,100 (Lambton-Shores)	
Total	\$ 948,450	\$ 1,045,426	\$ 61,765	\$ 12,935

Notes:

Regional Conservation Areas (A.W. Campbell, L.C. Henderson, Warwick, Highland Glen)

Local Conservation Areas (Shetland, Wawanosh, McEwen, Clark Wright)

In Town Conservation Areas (Strathroy, Coldstream, Dodge, Stranak, Crothers, Bridgeview)

Detailed budgets for specific conservation areas available upon request.

The areas are supported by employment programs, fundraising, friends of groups, St. Clair Region Conservation Foundation and grants programs from corporate and non-profit organizations.

Revenues	Foundation	Reserves	Grant Seasonal Employment
	\$ 500		
	\$ 750		
\$ 249,150			\$ 2,000
\$ 12,326			
\$ 448,700			
\$ 255,800			\$ 1,500
\$ 965,976	\$ 1,250	\$ -	\$ 3,500

Summary of Authority / Foundation Land Holdings

	Hectares
Conservation Lands	556
Conservation Forests	81
McKeough Upstream Lands	746
McKeough Dam & Channel	236
Foundations Lands	197
Total	1816
Flood Easements	647
<p>To ensure the wisest use of these lands, the Authority works with the public and private sectors by entering into various lease agreements including agricultural, residential and other resource management leases. 918 hectares are under lease.</p>	

2014 Municipal Funding
Schedule "C"

November 2013

Municipality	2013	2014	2013/2014	2013	2014
	CVA Apport.%	CVA Apport.%	Increase or (Decrease)	General Levy	Proposed General Levy
Adelaide Metcalfe Tp	1.5015%	1.6777%	0.1762%	\$ 9,488	\$ 11,055
Brooke-Alvinston Tp	1.4998%	1.5786%	0.0788%	\$ 9,477	\$ 10,402
Chatham-Kent M	13.5649%	13.2456%	-0.3193%	\$ 85,719	\$ 87,280
Dawn-Euphemia Tp	2.2288%	2.4448%	0.2160%	\$ 14,084	\$ 16,110
Enniskillen Tp	1.6652%	1.7198%	0.0546%	\$ 10,523	\$ 11,332
Lambton Shores M	4.5895%	4.8604%	0.2709%	\$ 29,002	\$ 32,027
Middlesex Centre Tp	1.8820%	2.0592%	0.1772%	\$ 11,893	\$ 13,569
Newbury V	0.1489%	0.1571%	0.0082%	\$ 941	\$ 1,035
Oil Springs V	0.1995%	0.2017%	0.0022%	\$ 1,261	\$ 1,329
Petrolia T	2.5174%	2.4151%	-0.1023%	\$ 15,908	\$ 15,914
Plympton-Wyoming T	4.7492%	5.0158%	0.2666%	\$ 30,011	\$ 33,051
Point Edward V	2.4223%	2.3980%	-0.0243%	\$ 15,307	\$ 15,801
Sarnia C	41.4801%	39.8381%	-1.6420%	\$ 262,119	\$ 262,507
Southwest Middlesex M	1.0285%	1.1235%	0.0950%	\$ 6,499	\$ 7,403
St. Clair Tp	10.7250%	11.1080%	0.3830%	\$ 67,773	\$ 73,194
Strathroy - Caradoc Tp	7.8369%	8.1475%	0.3106%	\$ 49,523	\$ 53,687
Warwick Tp	1.9605%	2.0091%	0.0486%	\$ 12,389	\$ 13,239
				\$631,915	\$658,935

2013/2014 Increase or (Decrease)	3D Mapping	2014				
		Flood Control Oper/Maint	Erosion Control Oper/Maint	Recreation	Capital Development	Total Municipal Funding
\$ 1,567	\$ 755					\$11,810
\$ 924	\$ 710					\$11,112
\$ 1,561	\$ 5,961	\$39,000	\$1,500	\$10,750		\$144,490
\$ 2,026	\$ 1,100			\$7,085		\$24,295
\$ 810	\$ 774					\$12,106
\$ 3,025	\$ 2,187			\$2,100		\$36,314
\$ 1,676	\$ 927			\$1,300		\$15,795
\$ 94	\$ 71					\$1,106
\$ 68	\$ 91					\$1,420
\$ 6	\$ 1,087			\$900		\$17,901
\$ 3,040	\$ 2,257			\$10,980		\$46,288
\$ 494	\$ 1,079		\$2,000			\$18,880
\$ 388	\$ 17,927		\$15,000	\$8,550		\$303,984
\$ 904	\$ 506					\$7,909
\$ 5,422	\$ 4,999	\$2,000	\$1,000		\$160,000	\$241,193
\$ 4,164	\$ 3,666		\$1,000	\$20,100		\$78,453
\$ 850	\$ 904					\$14,143
\$ 27,020	\$45,000	\$41,000	\$20,500	\$61,765	\$160,000	\$987,200

St. Clair Conservation
Conservation Areas 2014 Proposed Capital Projects

Warwick Conservation Area

Warwick Road Replacement:

- Existing main access roadway has become unsafe due to stream bank erosion along the roadway
- Project consists of engineering, land securement and road construction costs
- Estimated cost \$50,000

Washroom Upgrades to pool washroom building:

- Upgrade exterior siding on shower portion of the building
- Estimated cost \$1,500

Upgrade roadways with gravel:

- Estimated cost \$7,000

Picnic tables and site indicators:

- Purchase 15 new picnic tables and 3 new benches
- Install approximately 40 site indicators
- Estimated cost \$4,500

Replace main Conservation Area sign:

- Existing sign requires replacement
- Estimated cost \$700

Total capital cost for Warwick: \$63,700



L.C. Henderson Conservation Area

Reservoir weir improvements:

- Current weirs require repair as the concrete surface blocks are beginning to break apart exposing the underlying clay material
- Crossing to be improved with new wire concrete - will provide a wider surface
- Estimated cost \$20,000



Upgrade roadways with gravel:

- Estimate cost \$5,000

Picnic Tables:

- Purchase 15 new picnic tables
- Estimated cost \$4,500

Replace main conservation area sign:

- Existing sign requires replacement
- Estimate cost \$1,500

Total capital cost for L.C. Henderson \$31,000

A.W. Campbell Conservation Area

Pool Washroom Upgrades:

- New sinks and counter tops in women's washroom
- New concrete side walk
- A small section of barn board siding to be replaced
- Estimated cost \$2,500

Upgrade roadways with gravel:

- Estimated cost \$4,500

Picnic tables & site indicators:

- Purchase 15 new picnic tables
- Install approximately 20 site indicators
- Estimated cost \$4,500

Replace main conservation area sign:

- Existing sign requires replacement
- Estimate cost \$1,500



Total capital cost for A.W. Campbell Conservation Area \$13,000

C.J McEwen Conservation Area

Washroom Upgrades:

- Replace existing washroom partitions with new phenolic partitions (existing partitions were installed when the building was constructed in the late 1970's)
- Estimated cost \$ 3,000

Total Proposed Capital Costs for Conservation Areas \$110,700

Outline of Erosion Control Structure Maintenance for 2014

The following structures were constructed with Authority project management and grant from the Ministry of Natural Resources and as a result these projects are eligible for potential funding to support the maintenance of these projects. The potential grants are for inspection and maintenance of the structures at a grant rate of 50%.



Sarnia Erosion Control Project

The Sarnia Erosion Control Project protects Old Lakeshore Road, the adjacent properties and their access and major utilities in Brights Grove. Constructed between 1989 and 2001, the project remains in good condition. Continued monitoring of the conditions of the work will avoid major maintenance costs in the future. Planned works for 2014 include: continued control and removal of woody vegetation, placement of rip rap to improve pedestrian access and reduce safety concerns and improvements to viewing platforms and access stairs. A sheet pile groyne located east of Pine Avenue was replaced in 2013

Cathcart Park Shoreline Rehabilitation Project

The first and second phase of work has been completed on the shoreline protection at Cathcart Park in St. Clair Township. The study/design phase of this project was started in 2009 to protect and improve approximately 1,000 meters of shoreline. The work is geared to replace a failing steel sheet pile wall with a revetment comprised of stepped armour stone and sloped rip rap. The second phase of construction was completed in February 2013 and provided protection to about 100 meters of Shoreline. The Third Phase of work is planned for 2014 to provide shoreline rehabilitation to another 100 meters of St. Clair River shoreline.





Point Edward Erosion Control Project

The Point Edward Erosion Control Project is located on the St. Clair River in the Point Edward Waterfront Park and was constructed in 1995. The project is in good condition but is impacted annually by vandalism and loss of material due to stone shifting from wave and ice action. The timber curb that defines the boundary between the structure and the adjacent grass areas along the walkway is beginning to break down and will require gradual replacement over the next several years. Annual inspections and minor maintenance will ensure the longevity of the protection.

Works planned for 2013 will include: timber curb replacement, placement of additional clear stone in the voids on the top of the structure and the control of woody vegetation.



Wallaceburg Retaining Walls

Many of the retaining walls in the community of Wallaceburg were constructed with SCRCA project management and provincial grant. Most of the projects are in fair condition but will be requiring maintenance of one form or another over the next several years. Annual inspections and minor maintenance will ensure the protection of the properties. Removal of oversized woody vegetation and placement of various sizes of rip rap at several locations to control minor erosion issues are anticipated works for 2014.

Minor Maintenance of Authority Structures

An Engineering study carried out in 2012 pointed out the need for minor maintenance of several authority structures. Most structures are in good condition; however some cracks have appeared and should be repaired. SCRCA will establish a repair program in 2014 and minor cracks will be fixed at the following structures:

- 1) Petrolia Dam
- 2) Head Street Dam
- 3) Coldstream Dam





St. Clair Region Conservation Authority
205 Mill Pond Crescent, Strathroy, Ontario, N7G 3P9
(519) 245 – 3710 (519) 245 – 3348 FAX

stclair@scrca.on.ca

www.scrca.on.ca

member of



Conservation Ontario Website
www.conservation-ontario.on.ca

SCRCA Joint Health & Safety Committee Meeting Minutes- DRAFT

12.(vii)

Lower Board Room
205 Mill Pond Crest.
Strathroy, ON

Meeting called by:	Kevan Baker & Girish Sankar, Co-Chairs	Type of meeting:	Quarterly
Date	Wednesday, October 2, 2013	Time	8:30 am
Facilitator:	Kevan Baker		
Minutes:	Heather Long		
Attendees:	Kevan Baker, Girish Sankar, Mark Bakelaar, Steve Clark, Heather Long		

Minutes of Agenda Items

1. Approve June 13, 2013 meeting minutes

Motion: that “The Minutes of the June 12, 2013 meeting be approved as printed.”

Moved/Seconded/Carried – Steve/Girish/Carried

2. Business arising from the minutes

2.1. Review of Action Items

Heather Long:

- to document certification documents when received from Mark, Girish and Steve C.
 - received from Mark, Girish & Steve – scanned and entered in matrix
- to update Training Matrix with information from supervisors (*June 12, 2013 – item 2.4*)

Action Item:

- **Supervisors** to keep this matrix up to date as they do the training.
- **Kevan** to communicate to Supervisors the need to update Training Matrix and assist with this process.
- **Kevan** to add Fire Safety attendees to matrix.
- to give package to Brian with ideas to consider for orientating new staff to vehicle use and safety (*June 12, 2013 – item 2.7*)
 - information given to Brian via Tracy
 - insurance company would like us to do this
 - this will be dealt with as a Human Resources task, rather than under Health & Safety
- to report success of AED applications (*June 12, 2013 – item 2.8*)
 - unfortunately, the applications were not approved for either Lambton or Middlesex. If Heart & Stroke offers this program next year, the coordinator from Middlesex, Brianna Reilly, has indicated she will apply again for us.

Action item: JHSC will communicate this to the Board, through these minutes. JHSC recognizes that these units would be beneficial at each campground/education centre and at the Strathroy Office. JHSC believes these would be beneficial to the public and will continue to investigate funding options.
- to work with Chris to establish “Forms” section for staff to use on our staff website page (*June 12, 2013 – item 2.12*)
 - changes are pending on server and website. Chris indicated that it would be better to wait until later in the Fall so that this does not need to be done twice
- to update Pre-start Checklist with Service Record section (from Mark) (*June 12, 2013 – item*

2.12)

- completed and saved O - Health & Safety - Forms - Pre-start Checklist Forms
- to add Workplace Harassment and Violence Policies and Procedures to Health and Safety Manual (*June 12, 2013 – item 2.16*)
 - have been added to O-Health and Safety-Policy-Safety Manual folder. These will be moved into the Safety Manual when it is revised.
- to file completed Incident/Injury Investigation Reports in locked file (*June 12, 2013 – item 4.2*)
 - completed/ongoing (scanned copies on Heather's files on computer & original hard copies are in locked file at Heather's workstation)
- to post educational information on ticks on H & S bulletin boards (*June 12, 2013 – item 4.5*)
 - completed
- to purchase tick keys (*June 12, 2013 – item 4.5*)
 - purchased, distributed to CAs and McKeough and hanging with vehicle keys for staff to use when they go out

Mark Bakelaar:

- to establish a product list and get MSDS sheets for products used at LCH (to be used as a model for other departments) (*June 12, 2013 – item 2.13*)
 - Mark has created a list of all products at L. C. Henderson requiring MSDS and the publication dates of these MSDS sheets. Mark will continue to work on getting the required MSDSs.
- Action Item:** Mark will forward MSDS template to Girish as a tool to assist each of the parks and McKeough. Girish will continue to work with each department to sort through the products that require MSDS and get the sheets.

Steve Clark:

- to continue reviewing Health & Safety manual and bring changes to next meeting to ensure policies are compliant with Employment Standards Act (*June 12, 2013 – item 2.7*)
 - continuing to work through manual
 - items in the Health & Safety Appendix relate to Occupational Health and Safety Act
 - Employment Standards Act relates more to pay equity, benefits etc.
 - For Health & Safety the JHSC does not need to include ESA in their policies
- Action Item:** Steve Clark to continue to review Health & Safety Manual for updates.
Heather to add footer into the manual to show date of revisions as they are made.

Kevan Baker

- to communicate training matrix process to Diane/Supervisors/Staff (*June 12, 2013 – item 2.3*) (see 2.1 above)
 - to email names for First Aid Kit inspectors to Heather (*June 12,2013 – item 2.5*)
 - Administration Office - Steve Clark
 - Administration Office Vehicles – Heather Long
 - Conservation Services Vehicles – Jeff Sharp
 - Warwick Conservation Area - Glenn Baxter
 - L.C. Henderson Conservation Area - Mark Bakelaar
 - A.W. Campbell Conservation Area - Don Skinner
 - McKeough Dam and vehicles (#03 & #05) – Shane White
- Action Item:** Heather to distribute stickers (to identify if a First Aid Kit has been opened/used) to each of the First Aid Kit Inspectors
- to delete old versions of Pre-start Checklists from CA files (*June 12, 2013 – item 2.12*) - completed by Kevan
 - to delete old versions of Employee Orientation Checklist from CA files
 - completed by Kevan
 - to investigate available courses to become a Level 1 Moving Water trainer (to assist staff and volunteer groups) (*June 12, 2013 – item 4.2*)
 - not sure if turtle surveys will continue next year. If they do, Kevan will investigate this course &/or do training.

Girish Sankar:

- to ensure the correct size of First Aid Kit is at each location (*June 12, 2013 – item 2.5*) –

must be based on max. # of staff at each location

Action Item: Girish has copy of WSIB requirements and will use this to ensure each kit inspector has this as their guide

- to check all storage areas during inspections for risk of nails and sharp objects (*June 12, 2013 – item 4.2*)
 - Girish has added this to the inspection check list and is checking this during each of his site visits
- to discuss with Supervisors setting up binders to store the 5 Point Checklists (*June 12, 2013 – item 2.9*)
 - in progress (Kevan has one and has given one to each of his park supervisors)

Tracy Prince

- to communicate to Supervisors the new line item codes for Health & Safety (*June 12, 2013 – item 2.11*)
 - Completed - Supervisors have been made aware of this.

Department Heads

- to develop product lists of all items they use that require MSDS sheets (focus on non-retail products) and submit to Girish (*June 12, 2013 – item 2.13*)
- to update training completed by all staff on printed copy of Training Matrix (*June 12, 2013 – item 2.3*)
 - printed copies are prepared.

Action Item: Heather will send link to Department Heads following this meeting with request to update electronically.

Brian McDougall

- to review information from Aviva relating to driver files and evaluate if this should be implemented (*June 12, 2013 – item 2.7*)
 - to Brian via Tracy – Some information relates more to Human Resources than Health and Safety.

Action Item: JHSC to develop a system to document training that is provided to new staff on SCRCA's driving safety program.

- to review Zero Tolerance information and evaluate if we should prepare posters for each of our areas (*June 12, 2013 – item 2.17*)
 - draft completed and approved by supervisors .

Action Item: Heather to laminated in 8 ½ x 11" size and give to staff to hang in all locations.

Volunteer Groups

- to ensure volunteer groups are properly trained and equipped with safety equipment (*June 12, 2013 – item 4.2*)
 - ongoing responsibility of each project leader

2.2. Update on Fire Safety Training for staff

- Warwick Fire Chief trained all staff who attended the Team Building Day on fire safety (talk, video, printed information) and provided hands on training with fire extinguishers..

Action Item: Heather to document training in matrix

3. Area Reports/Workplace Inspections

3.1. Watershed Services (Girish)

Discussion:

- Incident involving a stone that was thrown by a weed eater

Action Item: Kevan to update Training Manual section on safe use of weed string trimmer so training is adjusted to reduce the chance of injury

3.2. Workplace Inspections (Girish)

Discussion:

- LCH and Warwick have been inspected since our June12 meeting

3.3. General CAs (Kevan/Mark)

Discussion:

- Kevan has purchased the following training videos to use with all staff: Lifting; Stools & Ladders; Slips Trips and Falls; Footwear Safety; Safety on Walking Surfaces

3.4. Other Departments
- No reports

4. New Business

4.1. Update of Safety Instruction Sheets (new Logo)

Discussion:

- some of the staff forms need to be updated with the new logo

Action Item: Heather & Kevan to update old logos on forms

4.2. Review of Incident/Injury Investigation Reports since our June 12, 2013 meeting

Discussion:

- 3 reports reviewed – no lost time injuries

Action Item:

- Continue to monitor reports to identify health and safety issues

4.3. Vehicle Circle Check Training

Discussion:

- information on A License requirements for vehicle circle checks has been shared by a staff member who has taken this test

- this information could be used to train staff to enhance our current procedures

5. Goals and Objectives in 2013

5.1. Develop training guide for Conservation Services Department (completed see: 2.2 – June 12, 2013)

5.2. Review safety manual and make changes as necessary (see: June 12, 2013 item 2.1)

5.3. Appoint worker rep. (completed Dec. 12, 2012)

5.4. Conduct workplace inspections as required (see: 3)

5.5. Encourage supervisors to complete safety reviews and 5 point check lists on a more frequent basis (ongoing – see March 27 item 2.9)

5.6. CA staff to prepare for safety committee review, new pre-operation check lists (completed)

6. Next meeting date: Wednesday, December 4, 2013, 8:15 am

7. Adjournment – 11:10 am

Misc. Information

Observers:

Contacts:

Worker Co-chair:	Girish Sankar	gsankar@scrca.on.ca
Management Co-chair:	Kevan Baker	kbaker@scrca.on.ca
Worker Reps.:	Mark Bakelaar	mabklaat@gmail.com
	Steve Clark	sclark@scrca.on.ca
Committee Secretary:	Heather Long	hlong@scrca.on.ca

Signature of Co-chair

Date

Signature of Co-chair

Date

Staff Report 13.(i)



To: Board of Directors
Date: October 31, 2013
From: Rick Battson
Subject: Communications Progress Report

Conservation Awards

A list of possible conservation award recipients will be brought forward at our board meeting in December. Should a board member wish to nominate any individual or organization, would they please contact Rick Battson at the office.

Memorial Forest Dedications

From September 2012 – August 2013, 538 trees were dedicated. 463 of these trees were through funeral home partnerships and 75 were through individual donations to the program.



Two dedications were held in the month of September. The McKenzie and Blundy dedication was held on September 15 at the Wawanosh Wetlands Conservation Area. Steve Arnold brought greetings from the Foundation. Approximately 600 people attended. The Foundation dedication was held on September 27 at the Lorne C. Henderson Conservation Area. Norm Giffen and Terry Burrell provided the remarks. Approximately 120 people attended.

Keith McLean Conservation Lands Open House

About 60 people attended an Open House at the Keith McLean Conservation Lands on October 26. The majority of the people attending were neighbours or relatives of Mr. McLean. There was a strong sense of agreement with our plans for the property as a place for the public to explore and enjoy.

Conservation Education Fundraising

One of the main Authority programs supported by the Foundation is Conservation Education. This support includes efforts to secure funds from corporate donors, special events and from support through the bingo program. In addition, the Conservation Authority applies for government grants to support the education program. Support in 2013 included:

Sarnia Lambton Environmental Association - \$30,000
Enbridge - \$10,000
RBC Blue Water Fund - \$5,000
Union Gas - \$5,000
Friends of the St. Clair River - \$2,000
TD Friends of the Environment Foundation - \$750
Sydenham River Canoe Race - \$2,500
Bingo Purchases - \$2,000
Habitat Stewardship Program for Species at Risk (Environment Canada) - \$14,000

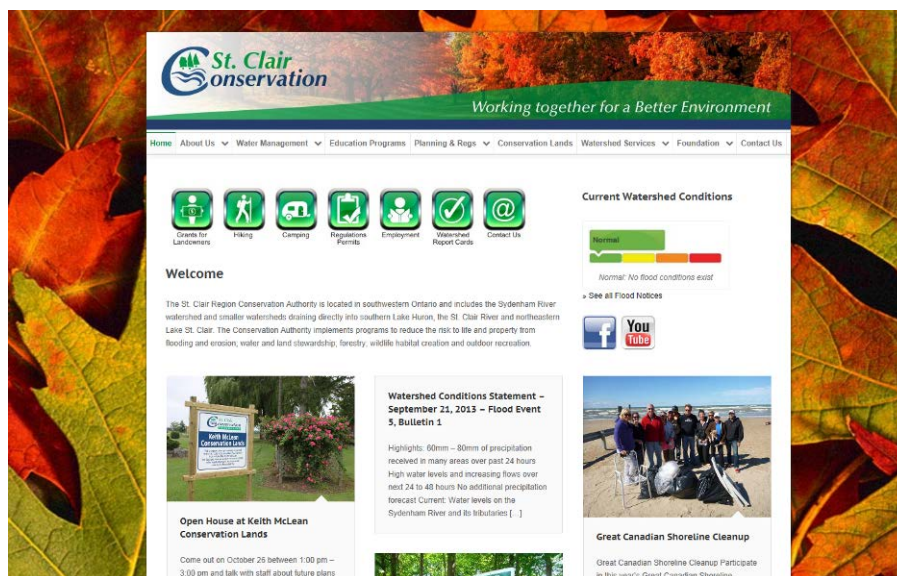


Total - \$71,250

We have submitted an application to DuPont through their Community Giving Program for a class set of GPS units for use in the Conservation Education Program. Dupont Pioneer has a fund that supports school programs by supplying science equipment. We have requested \$3,000.

New Website Launched

The SCRCA has revamped its website making it more user-friendly and to comply with the new Accessibility Act. The new site includes several features to allow for easy navigation while maintaining our wish to provide comprehensive information to our stakeholders and the public.



Staff Report

13. (ii)



To: Board of Directors
Date: October 31, 2013
From: Sharon Nethercott, Melissa Gill
Subject: Conservation Education Progress Report

Fall Education Programs

We have been overwhelmed with class bookings again this fall. Programs are fully booked until early December. The Ministry of Education provided \$20 million for Outdoor Education across the Province. Classroom teachers must apply for money to access the funding. Several teachers have already elected to book for the spring now.

Events

Mini Rekindle The Sparks Workshop, September 6th: We hosted 14 Outdoor Educators from S.W. Ontario Conservation Authorities for a sharing and learning opportunity at L.C. Henderson Conservation Area. A System Coordinator from the Lambton-Kent District School Board highlighted curriculum topics/activities that we could offer to be most useful for teachers. Erin Carroll, the Authority's Aquatic Biologist, talked on developing a relationship with our local First Nations and the education programs that have developed as a result.



Henderson Geocaching Event, September 22nd: the 5th annual event attracted over 60 enthusiastic geocachers. Many participants were impressed by the trails and campground facilities.

Jake's Day, September 15: assisted the Lambton Upland Game Bird Chapter with their annual 'kid's day' at the Lambton Conservation Club by running a station for the day. Insects of Lambton County were discussed. The children were encouraged to sweep net for insects and investigate what they found.

Fall Fairs: Wyoming Fair, September 11th and Brigden Fair, Oct 11th - assisted with 'Agriculture in the Classroom' by running a booth. Topics discussed were common sources of pollution found on a farm & some solutions to those problems. A hands-on 'Enviro-scape' model demonstrated how pollution travels across a watershed causing pollution of distant water bodies.

Special Projects

Species at Risk Program, Kettle and Stony Point First Nation, October 10th and November 8th: Funding was obtained through AFSAR and we worked in cooperation with SCRC staff biologists. This year two outdoor and two indoor sessions were taught for Gr 3, 4, and 5 students. The educational focus emphasized the role of invertebrates as a food source necessary to support the upper levels of the food chain. The children learned that the species at risk found within Kettle Point First Nation are dependent upon this diversity and abundance of life.

Reptiles at Risk, Perch Creek Habitat Management Area, October 30th: Assisted SCRC biologists with a program for Grade 12 students from St. Clair High School in Sarnia. The program, in its second year, is designed to be a hands-on long term project in which students will be assessing and improving reptile habitat.



Community Partnership

Return the Landscape: one staff person continues to sit on the Return the Landscape Committee. This Group aims to rescue native flora from development sites and replant them within native landscapes in Lambton County. A long term goal of the group is to ensure each school-yard in Lambton has its own native plant garden and to one day provide plant-focused educational opportunities to those schools.

Lambton County Trails Committee: one staff person sits on this Committee consisting of a group of people representing various County of Lambton organizations with an interest in Active Living. The purpose is to promote healthy living through the promotion of trails and natural areas and to encourage their use in hiking, cycling and other physical activity. The committee also hopes to preserve open spaces and to connect the communities through trail systems.

Children's Water Festival: a one year break is in effect this year due to a conflict with the War of 1812-1813 celebrations.

Staff Report

14.(i)



To: Board of Directors
Date: November 4, 2013
From: Brian McDougall, General Manager
Subject: Drinking Water Source Protection

Source Protection Municipal Implementation Fund:

- ❖ previously announced in the current Provincial budget, this funding was further outlined in a release last week
- ❖ the funding which supports a variety of implementation deliverables, can be used to fund Risk Management implementation (and could be used to contract the Conservation Authority's to undertake Risk Management on the municipalities behalf as proposed)
- ❖ using collaborations to efficiently and effectively implement source protection programs can provide additional funding for participating municipalities
- ❖ staff will be reviewing the implementation fund with municipal staff in the near future

Issues Contributing Area – Wallaceburg Water Intake:

- ❖ nitrates have been identified as an issue to the intake by the operators of the Wallaceburg intake
- ❖ an issue identified by the operator is considered to be a significant threat
- ❖ the technical rules require that an Issue Contributing Area (ICA) should be delineated for any identified issues
- ❖ as such, staff and a technical advisory team, have been working towards delineating this area for the Wallaceburg intake
- ❖ the potential sources of nitrates include: waste water treatment plants (WWTP), unused agricultural inputs and septic systems
- ❖ in the event that the Source Water Protection Committee approves a delineated ICA and the Minister of the Environment subsequently approves the updated Source Protection Plan, it is possible that WWTPs, septic systems and agricultural lands within the delineated ICA could be subject to review for the intention of reducing nitrate loading