



# Board of Directors Annual Meeting

Date: February 20, 2014

Time: 10:00 a.m.

Place: Czech Hall, Dresden

---

## Agenda

---

1. Chair's Remarks
2. Introduction of Guests
3. Adoption of Agenda
4. Declaration of Pecuniary Interests
5. Minutes
6. Highlights of 2013
7. Conservation Awards
8. Service Awards

*Break to seat new directors*

### **2014 Business**

9. Election of Officers
  - Chairman
  - Vice Chairman
10. Nominating Committee Report
11. 2014 Budget & Levy
12. Authorization to Borrow
13. 2014 Appointments
  - 2014 Auditors
  - Conservation Ontario Representatives
14. Regular Business
15. New Business
16. Adjournment

*Lunch to follow*

February 20, 2014

St. Clair Region Conservation Authority  
Annual General Meeting Proposed Resolutions

3. Moved by: \_\_\_\_\_ Seconded by: \_\_\_\_\_  
That the agenda for the Annual General Meeting be adopted.
4. It is requested that each Director declare a conflict of interest at the appropriate time, on any item within this agenda in that a Director may have pecuniary interest.
- 5.(i) Moved by: \_\_\_\_\_ Seconded by: \_\_\_\_\_  
That the minutes of the Board of Directors meeting held February 6, 2014, be approved as distributed.
- 6.(i) Moved by: \_\_\_\_\_ Seconded by: \_\_\_\_\_  
That the Board of Directors acknowledges the presentation highlighting the status of Keith McLean Conservation Lands and the development of the Peers Wetland.
- 7.(i) Moved by: \_\_\_\_\_ Seconded by: \_\_\_\_\_  
That the Board of Directors congratulates the 2013 Conservation Award Winners and thanks them for their contributions to conservation.
- 8.(i) Moved by: \_\_\_\_\_ Seconded by: \_\_\_\_\_  
That the Board of Directors acknowledges the service awards presented to the directors and staff and further that they be thanked for their years of dedicated service.

**2014 Business**

- 9.(i) Moved by: \_\_\_\_\_ Seconded by: \_\_\_\_\_  
That Larry MacKenzie be appointed chairperson for the election of the 2014 Chairman and Vice Chairman.
- 9.(ii) Moved by: \_\_\_\_\_ Seconded by: \_\_\_\_\_  
That \_\_\_\_\_ and \_\_\_\_\_ be appointed scrutineers in the event of an election.
- 9.(iii) Moved by: \_\_\_\_\_ Seconded by: \_\_\_\_\_  
That nominations for the position of Chairman be closed.
- 9.(iv) Moved by: \_\_\_\_\_ Seconded by: \_\_\_\_\_  
That nominations for the position of Vice Chairman be closed.

10.(i) Moved by: \_\_\_\_\_ Seconded by: \_\_\_\_\_  
That the St. Clair Region Conservation Authority adopts the 2014 Nominating Committee's Report.

10.(ii) Moved by: \_\_\_\_\_ Seconded by: \_\_\_\_\_  
That the 2014 Executive Committee for the St. Clair Region Conservation Authority be: \_\_\_\_\_, Chairman  
\_\_\_\_\_, Vice Chairman  
\_\_\_\_\_  
\_\_\_\_\_  
\_\_\_\_\_  
\_\_\_\_\_  
\_\_\_\_\_  
\_\_\_\_\_

11.(i) Moved by: \_\_\_\_\_ Seconded by: \_\_\_\_\_  
That the Board of Directors approves the 2014 budget of \$6,242,159 with a non-matching general levy of \$385,435 with all member municipalities deemed as benefitting and further that the levy be apportioned using the modified CVA of each municipality within the Authority's area of jurisdiction.

11.(ii) Moved by: \_\_\_\_\_ Seconded by: \_\_\_\_\_  
That the Board of Directors approves the 2014 budget of \$6,242,159 with a matching general levy of \$273,500 with all member municipalities deemed as benefitting and further that the levy be apportioned using the modified CVA of each municipality within the Authority's area of jurisdiction.

12. Moved by: \_\_\_\_\_ Seconded by: \_\_\_\_\_  
That the Authority Chairman or the Vice Chairman and the General Manager/Secretary-Treasurer or Director of Financial Services be authorized to borrow from the Libro Credit Union, Strathroy for the general operations and capital program of the Authority, a sum not to exceed \$968,935 to be repaid from grants received from the Province of Ontario, Government of Canada, levies assessed the member municipalities and general revenue.

13.(i) Moved by: \_\_\_\_\_ Seconded by: \_\_\_\_\_  
That the Authority's 2014 representatives to Conservation Ontario will be the Authority Chair, the Vice Chair will be the first alternate and the General Manager be the second alternate.

14.(i) Moved by: \_\_\_\_\_ Seconded by: \_\_\_\_\_  
That the Board of Directors acknowledges the General Manager's report dated February 11, 2014.

- 14.(ii) Moved by: Seconded by:  
That the Board of Directors acknowledges the report dated February 10, 2014, regarding current watershed conditions and Great Lakes water levels.
- 14.(iii) Moved by: Seconded by:  
That the Board of Directors acknowledges the report dated February 10, 2014, regarding Cathcart Park Shore Protection Revitalization and the schedule for completion of the project.
- 14.(iv) Moved by: Seconded by:  
That the Board of Directors acknowledges the report dated February 10, 2014, regarding Water and Erosion Control Infrastructure projects submitted to the Ministry of Natural Resources for funding in 2014 - 15.
- 14.(v) Moved by: Seconded by:  
That the Board of Directors acknowledges and concurs with the Regulations Activity Summary Report dated January 31, 2014 on "Development, Interference with Wetlands & Alterations to Shorelines & Watercourses" Regulations (Ontario Regulation 171/06) for the months November 2013, December 2013 and January 2014.
- 14.(vi) Moved by: Seconded by:  
That the Board of Directors acknowledges the St. Clair Region Conservation Authority's monthly Planning Activity Summary Reports for November 2013, December 2013 and January 2014.
- 14.(vii) Moved by: Seconded by:  
That the Board of Directors acknowledges the schedule of Special Events outlined in the attached flyer.
- 14.(viii) Moved by: Seconded by:  
That the Board of Directors acknowledges the report dated February 6, 2014, regarding the St. Clair River Area of Concern (AOC).
- 14.(ix) Moved by: Seconded by:  
That the Board of Directors approves the list of documents to be destroyed as determined by the record retention schedule.
- 14.(x) Moved by: Seconded by:  
That the Board of Directors acknowledges the report on the Warwick Conservation Area and approves costs associated with land securement, legal fees and road construction.
16. Moved by: Seconded by:  
That the meeting be adjourned.

The Board of Directors meeting of the St. Clair Region Conservation Authority was held on the above date, at the Administration Office in Strathroy, at approximately 10:30 a.m.

Present: Steve Arnold, Chair; Terry Burrell, Vice Chair; Bill Bilton, David Boushy, Tony Bruinink, Joe Faas, Norm Giffen, Rod Glen, Betty Ann MacKinnon, Kevin Marriott, Don McCallum, John McCharles, Steve Miller, Lonny Napper, Frank Nemcek

Absent: Elizabeth Davis-Dagg, Anne Gilbert, Anne Marie Gillis, Larry MacKenzie, Ben Phay

Also Present for all or part of Meeting: Brian McDougall, General Manager; Rick Battson, Director of Communication; Patty Hayman, Director of Planning; Dallas Cundick, Environmental Planner/Regs Officer; Regulations Officer; Tracy Prince, Director of Financial Services; Kevan Baker, Director of Lands; Girish Sankar, Water Resources Engineer; Muriel Andreae, Senior Biologist; Marlene Dorrestyn, Administrative Assistant; Ken Williams, Woods Pearson Associates; Chantell Core, Nick Core

The Chairman welcomed everyone to the meeting and requested that each Director declare a conflict of interest at the appropriate time, on any item within this agenda in that a Director may have pecuniary interest.

**BD-14-001**

**Glen - Bruinink**

**“That the minutes of the Board of Directors meeting, held December 12, 2013, be approved as distributed.”**

**CARRIED**

**BD-14-002**

**MacKinnon – Bilton**

**“That the Board of Directors accepts the recommendation of the Executive Committee approving the proposal submitted by Graceview Enterprises Inc. of Belmont, Ontario, for a project cost of \$98,310.00 including HST and directing staff to proceed with the project as soon as permits are in place regarding the addition to the workshop at Clark Wright Conservation Area.”**

**CARRIED**

The General Manager’s Report was presented:

- the cold temperatures and snowy conditions that we have experienced over the last few weeks have presented a few challenges to overcome:
  - frozen pipes at residential rental properties – propane heaters
  - snow removal – increased contractor and staff time
  - ice conditions on the watercourses – thickness monitoring and tracking of potential ice breaking vessels
- Tom McGregor has provided notice to both the Municipality of Chatham-Kent and the Authority that, due to other commitments, he has resigned as a Director on the Authority Board
- Tom’s support of Authority staff during his membership on the Board has been greatly appreciated
- Chatham-Kent has appointed Anne Gilbert to fill their vacancy on the Board of Directors and we will welcome Anne at the Annual General Meeting

- Larry MacKenzie will not be returning to the Authority Board for 2014 due to his additional commitments as Mayor of Point Edward
- Larry's commitment to the organization and his steadfast support of staff are greatly appreciated
- John Romlewski has been appointed to the Authority Board by the Village of Point Edward for 2014 and we will welcome John at the Annual General Meeting

**BD-14-003**

**Nemcek - Boushy**

**“That the Board of Directors acknowledges the General Manager’s report, dated January 29, 2014.”**

**CARRIED**

Conservation Ontario Board meeting minutes of December 6, 2013 were reviewed.

**BD-14-004**

**MacKinnon - Glen**

**“That the Board of Directors acknowledges the minutes of the December 6, 2013 Conservation Ontario Council meeting.”**

**CARRIED**

Correspondence from Nottawasaga Valley Conservation Authority has circulated a resolution to all Conservation Authorities and Conservation Ontario for information and support regarding “Food & Water First” campaign to save our farmland and protect our water.

**BD-14-005**

**Bruinink - Faas**

**“That the St. Clair Region Conservation Authority Board of Directors support in principle the “Food and Water First” campaign.”**

**CARRIED**

Mr. Ken Williams of Woods Pearson Associates, presented the 2013 Audited Financial Statements.

**BD-14-006**

**Faas - Miller**

**“That the Board of Directors acknowledges the report from the Authority’s auditors, Woods, Pearson & Associates Chartered Accountants LLP, accepts responsibility for the 2013 financial statements and the Statement of Continuity of Reserves and Reserve Funds and year end finances and further approves the yearend adjustments, reserves and reserve adjustments as outlined in the schedule dated December 31, 2013 and recommends that the Board of Directors approve the 2013 Audited Financial Statements.”**

**CARRIED**

December 2013 disbursements totaling \$432,033.78 were considered.

Directors Comments:

- requested that consideration be given to purchasing Giant Tiger Gift Cards as opposed to Superstore.

**BD-14-007**

**Glen - Bruinink**

**“That the Board of Directors approves the December 2013 disbursements as presented in the amount of \$432,033.78.”**

**CARRIED**

A status report on general levy received to date was discussed. All 2013 general levy was received by year end.

**BD-14-008**

**Bilton – Miller**

**“That the Board of Directors acknowledges that all 2013 municipal general levy has been received.”**

**CARRIED**

The draft 2014 budget was submitted to member municipalities in November 2013. The carry forwards results are included in this budget.

**BD-14-009**

**Faas - Boushy**

**“That the Board of Directors acknowledges the changes to the 2014 Proposed Budget, and recommends to the Board of Directors the amended 2014 Proposed Budget, dated January 29, 2014 of \$6,2422,159 with a municipal general levy of \$658,935.”**

**CARRIED**

A Conservation Lands Update was reviewed:

- Conservation Area Projects approved for 2014:
  - Warwick Conservation Area:
    - main access roadway to be relocated do to stream bank erosion along Bear Creek
    - project to consist of engineering, land securement, bank stabilization and road construction
    - new property identification sign to be installed
    - 15 new picnic tables and 3 new benches to be purchased
    - exterior improvements to be made to the pool washroom building
    - roads to be upgraded with gravel
    - new campsite indicators to be installed on 40 campsites
    - 600 meter trail to be developed on the upland area overlooking Bear Creek (Foundation Project)
    - bike cross loop to be developed (Foundation Bingo Project)
  - L.C. Henderson Conservation Area:
    - main reservoir weir to be improved with new cable concrete surfacing
    - new property identification sign to be installed
    - 15 new picnic tables to be purchased
    - roads to be upgraded with gravel

- 450 meters of existing trails to be resurfaced with chip & dust (Foundation Project)
- A.W. Campbell Conservation Area:
  - upgrades to be made to the women's pool washroom
  - 15 new picnic tables to be purchased
  - a new property identification sign to be installed
  - roads to be upgraded with gravel
  - new campsite indicators to be installed on 20 campsites
  - lake trail to be improved with chip & dust surfacing and new boardwalks (Foundation Project)
  - new carpet to be installed on the mini golf course (Foundation Bingo)
  - bike cross loop to be developed (Foundation Bingo)
- Wawanosh, Highland Glen, Clark Wright:
  - new property identification signs to be installed
  - Highland Glen, harbour and boat ramp area to be dredged
- McKeough Upstream Lands:
  - Properties 38, 40 and 103 will have soil erosion repair works completed
  - Property 79/80 – a wetland to be developed
  - Property 82/83 – two hikenbottoms to be repaired
  - Property 97 – wildlife shrubs to be planted around the wetland
  - Properties 38, 39, 40, 83 north, 95 north – grass buffers strips to be planted along drains and natural water courses
- Lambton County Lands:
  - Lambton County Heritage Forest:
    - staff regularly inspect and perform maintenance on the 8 kms of trails
    - forestry staff to inventory, mark and oversee logging operations within one of the forest management compartments
  - Marthaville:
    - a new trail sign and a 200' section of fencing to be installed
    - staff regularly inspect and perform maintenance
  - Bowes Creek:
    - 8,100 seedlings to be planted and 43,000 previously planted seedlings to be sprayed with herbicide to control grass and weeds
    - subsurface drainage tile to be repaired
  - Perch Creek
    - trail improvements to include widening and extending the existing trail; and developing a plan for future trails
    - staff regularly inspect and perform maintenance
    - existing trails will be cut by a local grass contractor



**BD-14-010**

**MacKinnon - Marriott**

**“That the Board of Directors acknowledges the Conservation Lands Update, dated January 23, 2014 concerning maintenance and development on conservation areas, and McKeough Upstream Lands.”**

**CARRIED**

A staff report on water levels, current and flood conditions was presented.

- Watershed Precipitation and Streamflow Conditions
  - winter conditions have been experienced across the watershed since early December with mean temperatures in December of minus 3.7 degrees and then significantly colder in January with minus 9.7 degrees. With lower temperatures snow accumulations were experienced all many areas resulting from snow storm events in early December only to be lost with slightly warmer temperatures and subsequent rainfall mid-month. Flows were increased at this time with combined snow melt and additional precipitation falling as rain during this period. This pattern was repeated following extreme cold temperatures in the first week of January when large amounts of snowfall coupled with 20 to 30 mm of rain increased levels for an extended period over the first week followed by a milder period. During this time ice became soft and in many places dislodged into flowing ice sheets which then quickly refroze as temperatures fell overnight. In most locations, while the quality of the ice was impacted, there appears to have been limited movement of the ice pack in most watercourses however any flooded areas have now frozen in place.
  - regional precipitation numbers indicate near normal precipitation in quarterly and the last six month periods but rainfall from the early part of the year helped to improve overall numbers by 20% for the entire year. Interestingly errors in Environment Canada climate data reporting for Sarnia resulted in a report of 360 mm of precipitation being recorded for the month of December. SCRA data was used to correct this number for our reporting.
- Snow and Ice conditions
  - conditions continue to be variable across the watershed but significant amounts were lost in the second week of January. Conditions are monitored on a bi-weekly basis together with the integrity of river ice at strategic locations. Currently watercourses have 6 – 8 inches of white slightly deteriorated ice with some open sections near higher flow areas. All areas are anticipated to thicken into February with the extremely cold temperatures together with increased snow cover. Some ice jams have been experienced in the St. Clair River but ice remains in place in the Chenal Ecarte and into the mouth of the Sydenham River.
- Weather Forecast (Weather Network, Environment Canada)
  - January - Snow with average temperatures but milder conditions near the end of the month. Below normal precipitation with slightly above average temperatures
  - Winter - Temperatures will be above with coldest periods in both mid-January and February. Snowfall below normal into spring
- Great Lake Levels (NOAA Great Lakes Environmental Research 1948 to 2013)
  - current average compared to entire period of record (96 years) for Lake Huron indicates the last ten years average is 41cm (16 ins) lower than the average for the entire period of record.

**BD-14-011**

**Napper - Giffen**

**“That the Board of Directors acknowledges the report dated January 27, 2014 on the Great Lakes water levels and current watershed conditions.”**

**CARRIED**

Minutes of the January 17, 2014 Flood Action Committee were reviewed.

**BD-14-012**

**Faas - MacKinnon**

**“That the Board of Directors acknowledges the minutes of the Flood Action Committee held on January 17, 2014 in Wallaceburg.”**

**CARRIED**

A staff report regarding the 2013 Deer Hunt on McKeough Upstream Lands was presented.

Directors Comments:

- overall requests for hunting permission was down in 2013.
- number of hunters is less
- number of tags given out are down

**BD-14-013**

**Miller - Glen**

**“That the Board of Directors acknowledges the report dated January 16, 2014 regarding the 2013 deer hunt on McKeough Upstream Lands.”**

**CARRIED**

**BD-14-014**

**Bruinink - Giffen**

**“That the Board of Directors adjourn the regular Board of Directors meeting at 11:20 a.m. and convene as a Hearing Board pursuant to Ontario Regulation 171/06 – “Development, Interference with Wetlands and Alterations to Shorelines and Watercourses” Regulation to consider Application #10852 of Nick and Chantelle Core.”**

**CARRIED**

The Chair presented an outline how the hearing would proceed, as per Section 28 (3) Conservation Authorities Act Hearing Guidelines, October 2005, prepared by Conservation Ontario and Ministry of Natural Resources and an explanation of the *Conservation Authorities Act*. Roll Call was taken.

Dallas Cundick then presented an outline of the Core’s application and explained the Authority’s staff recommendations as they pertain to the St. Clair Region Conservation Authority’s policies and the hazard that exists at the site.

**Background**

SCRCA Lake Huron Shoreline Policy for Major Additions at the Subject Location States;

1. Major Additions;

- a. total proposed area for the addition is greater than 30% and less than 50% of the existing foundation area or footprint area (whichever is the lesser amount);

Summary of Pre-Consultation Steps/Chronology of Discussions with Landowners

Step 1:

- existing dwelling footprint is 69 sq. m, and therefore a 34.5 sq. m addition is permissible onto the landward side of existing dwelling;

Step 2:

- CA staff discussed with landowner that the existing detached garage could be removed, and its footprint (41 sq. m) could be used as permissible addition sq. area for addition onto existing dwelling;

Step 3:

- CA staff discussed with landowner that potentially the existing dwelling could be relocated outside the 60 yr. RR, the existing detached garage could be removed, and the combined footprint of the existing dwelling and existing detached garage could be used to determine the total square area permissible for relocated/redeveloped dwelling with addition and attached garage;
  - therefore, total square area for proposed relocated/redeveloped dwelling with addition and attached garage to be no greater than 164 sq. m;
    - due to the buildings existing on-site, staff of the SCRCA thought this approach reasonable and within policy framework;

Therefore, as per SCRCA policies and pre-consultation with landowners, permitted total square area allowed (relocated structure plus additions) no greater than 164 sq. m.

- 164 sq. m meets Plympton-Wyoming Zoning By-law;

Core's submitted application with proposed relocated dwelling and additions with total gross square area of 218.5 sq. m.

- Core's application was for total gross square area of 218.05 sq. m, this is an approximately 100% total gross square area addition to existing combined footprint.
- therefore:
  - the proposed relocation and addition does not meet SCRCA Lake Huron Shoreline policies. Proposed development extends beyond relocation and major addition and constitutes redevelopment or new structural development.

SCRCA Shoreline Policies dictate that:

- for new structural development within the Erosion Hazard;
  - the development must be setback a minimum distance equivalent to the Stable Slope Hazard plus 60% of the Erosion Hazard while considering the protection works standard and access standard to the maximum extent and level possible ;
- as outlined through technical studies single lot protection is not feasible at this reach of shoreline;
- therefore, recommended that this application for permission be denied.

The property owners Nick and Chantelle Core presented their thoughts on their new application:

- thanked the Board for their quick turn around
- reduced square footage from last application

- asking for a compromise
- removed the 3<sup>rd</sup> floor, but left the windows for aesthetics
- wants to add value to house
- thanked the Board for their time.

**BD-14-015**

**Bilton - Glen**

**“That the Hearing Board go in camera at 12:34 p.m. to review and discuss the appeal of Application #10852.”**

**CARRIED**

**BD-14-016**

**Miller - Bilton**

**“That the Hearing Board regarding the appeal of Application #10852 rise and report at 12:55 p.m..”**

**CARRIED**

**BD-14-017**

**MacKinnon – Faas**

**“That the Hearing Board, in accordance with the requirements of the Conservation Authorities Act, held a hearing regarding Nick & Chantelle Core, Application #1000852 on February 6, 2014, and hereby approves the application as per Lot Grading Plan of Lot 46, Registered Plan 28(PY) Town of Plympton-Wyoming, County of Lambton, completed by Nisbet, Robertson, Drawing Number 13-234-C, dated September 3, 2013, conditional on the following:**

- 1. Total square area (the total area of all floors above grade measured between the outside surfaces of exterior walls, including interior parking) is not greater than 164 sq.m;**
- 2. The approval is based on relocation of the existing dwelling as per the application;**
- 3. All other standard SCRCA staff approval permit requirements (i.e. proper grading/drainage, hazard on title).”**

**CARRIED**

**BD-14-018**

**Miller - Bilton**

**“That the Hearing Board adjourns the Hearing and reconvenes as the Board of Directors at 12:55 p.m.”**

**CARRIED**

**BD-14-019**

**Faas - Burrell**

**“That the meeting be adjourned.”**



---

Steve Arnold  
Chair

---

Brian McDougall  
General Manager

Attached to original minutes: Roll Call Attendance sheet

## Levy Voting Procedures

11.(i) & 11.(ii)  
November 16, 2000  
Approved  
BD-00-156

### Non-Matching Levy Voting Procedures

1. Prepare a list showing the directors' name, municipality and members' weighted vote from information prepared by the Ministry of Municipal Affairs.
2. Before calling for a motion on approval for the year's non-matching general levy call the roll.
3. Call for a recorded vote.
4. Each director has a vote weighted according to their apportioned modified Current Value Assessment. In the case of a director representing more than 1 municipality, that director will vote individually for each municipality they represent and each weighted vote will be based on the respective modified CVA weighting. Where there is a multi-member municipality, each member carries to the meeting the proportion of that municipality's weighted vote divided by the number of members appointed by that municipality. In the event that not all of a municipality's member(s) are present, the member(s) in attendance represent(s) only their proportion of the municipal weighting in the voting.
5. The final vote will represent a percentage of those voting yes versus the total modified CVA in attendance.

Example:

CVA weighted % voting yes	65.0050
CVA weighted % in attendance	75.0500

$$\frac{65.0050}{75.0500} \times 100 = 86.6200\%$$

6. The Policies and Procedures for the Administration of the Municipal Regulation for Non-Matching levy - Conservation Authorities Act - advises a weighted majority vote of 51% of those present will carry the vote.

### Matching Levy

1. Matching levy is voted by majority vote by the Board members present.

## Recorded Vote for Non Matching Levy

11.(i)

2014 Directors	Apport. %	For	Opposed
Betty Ann MacKinnon - Township of Adelaide-Metcalf	1.6777		
Frank Nemcek - Township of Brooke-Alvinston	1.5786		
Joe Faas - Municipality of Chatham-Kent	6.6228		
Anne Gilbert - Municipality of Chatham-Kent	6.6228		
Bill Bilton - Township of Dawn-Euphemia	2.4448		
Kevin Marriott - Township of Enniskillen	1.7198		
Kevin Marriott - Village of Oil Springs	0.2017		
Elizabeth Davis-Dagg - Township of Lambton Shores	4.8604		
Ben Phay - Township of Middlesex Centre	2.0592		
Don McCallum - Village of Newbury	0.1571		
Don McCallum - Township of Southwest Middlesex	1.1235		
John McCharles - Town of Petrolia	2.4151		
Netty McEwen - Town of Plympton - Wyoming	5.0158		
John Romlewski - Village of Point Edward	2.3980		
Anne Marie Gillis - City of Sarnia	13.2794		
Terry Burrell - City of Sarnia	13.2794		
David Boushy - City of Sarnia	13.2793		
Steve Arnold - Township of St. Clair	5.554		
Steve Miller - Township of St. Clair	5.554		
Tony Bruinink - Township of Strathroy- Caradoc	4.0738		
Norm Giffen - Township of Strathroy - Caradoc	4.0737		
Rod Glen - Township of Warwick	2.0091		







## **2014 Proposed Budget**

Dated January 29, 2014

1. Quick Facts (pg. 2-3)
2. 2014 Budget Highlights (pg. 3)
3. 2014 Summary Budget (pg. 4-5)
4. 2014 Expanded Budget (pg. 6-7)
5. 2014 Levy Assessment (CVA) - Schedule "A" (pg. 8-9)
6. 2014 Conservation Areas Maintenance and Operation Budget - Schedule "B" (pg.10-11)
7. 2014 Municipal Funding Summary - Schedule "C" (pg.12-13)
8. 2014 Conservation Area's Capital Projects (pg. 14-16)
9. 2014 Outline of Erosion Control Structure Maintenance (pg. 17-19)
10. Notes (pg. 19)

# St. Clair Region Conservation Authority

## Quick Facts

### General:

- 17 member municipalities from Lambton and Middlesex Counties and the cities of Sarnia and Chatham-Kent (see member directory for full listing)
- 20 members on the Board of Directors appointed by municipalities (see directory)
- 14 watersheds - Sydenham River with its East and North branches, 13 smaller named watersheds entering Lake Huron, St. Clair River and Lake St. Clair.
- of the 36 Conservation Authorities in the province, the St. Clair Region ranks:
  - **9<sup>th</sup> largest in area (4,100 km<sup>2</sup>)**
  - **16<sup>th</sup> in population (152,077 within the watershed)**
  - **35<sup>th</sup> in general levy (\$3.22 per capita) in 2013**
  - **6<sup>th</sup> in receipt of provincial grant from the Ministry of Natural Resources**

### Land:

- owns 4,200 acres of property
- manages another 1,340 acres for the County of Lambton
- manages 15 properties (800 acres) for our Conservation Foundation
- has 16 Conservation Areas including 3 regional campgrounds - 522 serviced campsites
- over 200,000 visitors to Conservation Areas in 2013

### Water Management:

- has the largest flood control dam and diversion in the province (McKeough Floodway)
- 11 recreation dams at 8 Conservation Areas
- assisting Chatham-Kent with maintenance of nearly 20 km of dykes
- assisting Sarnia, Point Edward, St. Clair Township, Chatham-Kent in maintaining almost 10 km of shore protection and erosion control structures
- in excess of \$52 million invested in conservation lands and flood and erosion control structures

### Planning/Regulations/GIS:

- provided technical and professional comments on over 500 municipal planning and regulation matters in 2013
- commented on provincially generated policy related to natural hazards and heritage features
- managing AOC St. Clair River program
- internal and external GIS computer mapping needs for Authority staff and partners

### Education/Communication:

- helped over 10,000 children discover conservation through outdoor education
- work in partnership with over 100 groups and thousands of individuals who support conservation and environmental programs throughout the watershed

### Biology/Research:

- science based research supporting Species at Risk, benthic water quality monitoring, groundwater monitoring, fisheries, municipal drain classifications

**Forestry/Healthy Watersheds:**

- planted over 3.4 million trees over the last three decades
- constructed over 100 acres of wetlands
- provides technical and professional services to municipalities for land management, erosion control, urban forestry, road side tree planting, private woodlot management
- provided \$2 million in grants to farmers and other landowners to implement Best Management Practices since 2000

**Finances:**

- 2014 Budget - \$6,242,159
- 2014 General Levy - \$658,935 to be shared by the 17 member municipalities
- General Levy accounts for just 12.0% of the Authority's Budget

## **2014 Budget Highlights**

We offer the following highlights for your information:

- General Levy for 2014 is \$658,935 to be shared by the 17 member municipalities
- Matching and Non-Matching Levy for 2014 are budgeted to be a \$27,020 increase from 2013 to be shared by the 17 member municipalities
- Provincial grants to Conservation Authorities support flood control, planning, administration, legal expenses and technical studies
- In addition, grants continue to be available for studies, inspection, major maintenance, minor maintenance and preventative maintenance of water and erosion control structures to protect significant investments made by the province and municipalities
- St. Clair Region has in excess of \$52 million (at time of construction) invested in flood and erosion control structures and lands
- Grants applied for in the business plan used to develop the budget
- However, the received grants may not be as indicated in the budget. Upon confirmation of approved grants, the budget will be revised to reflect those grants with the combined levy (matching and non-matching) remaining unchanged.
- Detailed budgets for each program or project are available upon request

**SCRA Summary Budget -**

**Proposed – February 2014**

	Budget	Provincial Grant	Provincial Grant Reserves
Flood Control Operations & Maintenance	\$ 681,900	\$ 246,000	
Erosion Control Operations & Maintenance	\$ 41,000	\$ 20,500	
WECI Capital Projects	\$ 432,520		
Source Protection Planning	\$ 200,000		
Planning and Regulations	\$ 395,500	\$ 15,000	
TS - Hazard & Flood Information Management	\$ 46,000	\$ 4,500	
TS -IPZ	\$ 25,977		
TS - Aquatic systems monitoring	\$ 144,800		
TS - Healthy Watershed	\$ 59,000		
AOC Management	\$ 177,500		
Conservation Services/Healthy Watershed	\$ 888,600		
MNR Species At Risk	\$ 210,124		
Recreation	\$ 1,068,826		
CA Capital Development	\$ 120,965		
Property Management	\$ 300,487		
Information and Education	\$ 189,630		
IT Capital	\$ 19,200		
Equipment	\$ 72,000		
Legal	\$ 1,000	\$ 500	
Administration	\$ 797,130	\$ 23,500	
<b>Total CA Budget</b>	<b>\$ 5,872,159</b>	<b>\$ 310,000</b>	<b>\$ -</b>
Employment Programs	\$ 220,000		
Stewardship Programs	\$ 150,000		
<b>Total Budget</b>	<b>\$ 6,242,159</b>	<b>\$ 310,000</b>	<b>\$ -</b>

\* The Authority assists in the administration of the Employment and Stewardship programs, therefore these items must be approved under the Authority's budget for signing authorization. The funds are only transferred in and out with the Authority having no direct spending controls and is therefore not considered in applying for

**SCRA Summary Budget -**

**Proposed – February 2014**

Other Grant/Program Funds	Matching Levy	Non Matching Levy	Special Levy	Revenues	Reserves
\$ 12,500	\$ 230,000	\$ 500	\$ 41,000	\$ 151,900	
			\$ 20,500		
\$ 122,000			\$ 160,000	\$ 150,520	
\$ 200,000					
	\$ 15,000	\$ 144,000	\$ 45,000	\$ 111,500	\$ 65,000
\$ 37,000	\$ 4,500				
\$ 20,000				\$ 5,977	
\$ 3,500		\$ 31,500		\$ 109,800	
\$ 59,000					
\$ 177,500					
\$ 77,000				\$ 796,600	\$ 15,000
\$ 160,124				\$ 50,000	
\$ 12,676		\$ 12,935	\$ 61,765	\$ 981,450	\$ -
				\$ 26,265	\$ 94,700
\$ 35,000				\$ 255,487	\$ 10,000
\$ 11,500		\$ 70,000		\$ 70,000	\$ 38,130
				\$ 19,200	
				\$ 72,000	
	\$ 500				
	\$ 23,500	\$ 126,500		\$ 488,630	\$ 135,000
<b>\$ 927,800</b>	<b>\$ 273,500</b>	<b>\$ 385,435</b>	<b>\$ 328,265</b>	<b>\$ 3,289,329</b>	<b>\$ 357,830</b>
	\$ -	\$ -	\$ -	\$ 220,000	\$ -
	\$ -	\$ -	\$ -	\$ 150,000	\$ -
<b>\$ 927,800</b>	<b>\$ 273,500</b>	<b>\$ 385,435</b>	<b>\$ 328,265</b>	<b>\$ 3,659,329</b>	<b>\$ 357,830</b>

**SCRA Summary Budget -**

**Proposed - February 2014**

	Budget	Provincial Grant	Provincial Grant Reserve	Other Grant/Program Funds	Matching Levy
Flood Control Operations and Maintenance	\$681,900	\$246,000	\$0	\$12,500	\$230,000
Erosion Control Operations & Maintenance	\$41,000	\$20,500	\$0	\$0	\$0
Capital Projects	\$432,520	\$0	\$0	\$122,000	\$0
Source Protection Planning	\$200,000	\$0	\$0	\$200,000	\$0
Planning and Regulations	\$395,500	\$15,000	\$0	\$0	\$15,000
TS - Hazard & Flood Information Management	\$46,000	\$4,500	\$0	\$37,000	\$4,500
TS - IPZ	\$25,977	\$0	\$0	\$20,000	\$0
TS - Aquatic systems monitoring	\$144,800	\$0	\$0	\$3,500	\$0
TS - Healthy Watershed	\$59,000	\$0	\$0	\$59,000	\$0
St. Clair AOC Management	\$177,500	\$0	\$0	\$177,500	\$0
Conservation Services	\$888,600	\$0	\$0	\$77,000	\$0
MNR Species at Risk	\$210,124	\$0	\$0	\$160,124	\$0
Recreation	\$1,068,826	\$0	\$0	\$12,676	\$0
Capital Development	\$120,965	\$0	\$0	\$0	\$0
Property Management	\$300,487	\$0	\$0	\$35,000	\$0
Information and Education	\$189,630	\$0	\$0	\$11,500	\$0
IT Capital	\$19,200	\$0	\$0	\$0	\$0
Equipment	\$72,000	\$0	\$0	\$0	\$0
Legal	\$1,000	\$500	\$0	\$0	\$500
Administration	\$797,130	\$23,500	\$0	\$0	\$23,500
<b>Total CA Budget</b>	<b>\$5,872,159</b>	<b>\$310,000</b>	<b>\$0</b>	<b>\$927,800</b>	<b>\$273,500</b>
Employment Programs	\$220,000	\$0	\$0	\$0	\$0
Stewardship Programs	\$150,000	\$0	\$0	\$0	\$0
<b>Total Budget</b>	<b>\$6,242,159</b>	<b>\$310,000</b>	<b>\$0</b>	<b>\$927,800</b>	<b>\$273,500</b>

SCRA Summary Budget -

Proposed – February 2014

Non Matching Levy	Special Levy	Revenues	Reserves
\$500	St. Clair - McK Maint \$2,000 C-K- McK Maint - \$38,000, Arda - \$1,000	Oil & Gas Revenue - \$2,500 Carryforwards - \$143,400 Other Income - \$6,000	\$0
\$0	Sarnia - SECP \$13,000 Pt. Edward - PEECP \$2,000 C-K - Dres RetWalls&CECP \$500 Sarnia - SBCEP \$2,000 C-K - Wallaceburg Walls \$1,000 Strathroy - StrECP \$1,000 St. Clair - Corrunna Ret Wall \$1,000		\$0
\$0	St. Clair - Cathcart Park \$160,000	Carryforwards - \$150,520	\$0
\$0			\$0
\$144,000	All Municipalities based on General Levy Split \$45,000 (3D Mapping)	Fees - \$73,000 Carryforward - \$38,500	\$65,000
\$0			\$0
\$0		Carryforward \$5,977	\$0
\$31,500		Carryforward \$109,800	\$0
\$0			\$0
\$0			\$0
\$0		Fees - \$406,000 Carryforward \$390,600	\$15,000
\$0		Carryforward \$50,000	\$0
\$12,935	Shetland - Dawn-Euphemia \$7,085 Wawanosh - City of Sarnia \$8,550 Clark Wright - Strathroy-Caradoc \$1,600 Bridgeview - Town of Petrolia \$900 Coldstream - Middlesex Centre \$1,300 Crothers - Chatham-Kent \$1,600 Stranak - Chatham-Kent \$8,000 Peers - Chatham-Kent \$1,150 Strathroy - Strathroy-Caradoc \$18,500 McEwen - Plympton-Wyoming \$10,980 Dodge - Lambton Shores \$2,100	Fees - \$956,800  Foundation - \$1,250  Carryforward PEERS - \$23,400	\$0
\$0		Carryforward - \$26,265	\$94,700
\$0	\$0	Rental Income - \$185,000 County of Lambton - \$45,000 Carryforward - \$5,487 Revenue - \$20,000	\$10,000
\$70,000	\$0	Fees - \$20,000 Donations - \$50,000	\$38,130
\$0		\$19,200	\$0
\$0		\$72,000	\$0
\$0			\$0
\$126,500		Rental Income - \$12,000 Interest Income - \$65,000 Foundation - \$9,000 Allocated Admin Costs - \$60,000 Adimn Fees - \$53,500 Oil & Gas Revenue - \$57,000 Carryforward - \$232,130	\$135,000
<b>\$385,435</b>	<b>\$328,265</b>	<b>\$3,289,329</b>	<b>\$357,830</b>
\$0	\$0	\$220,000	\$0
\$0	\$0	\$150,000	\$0
<b>\$385,435</b>	<b>\$328,265</b>	<b>\$3,659,329</b>	<b>\$357,830</b>

Schedule "A"  
2014 Levy Assessment

Municipality	2013 Current Value Assessment (modified) in Watershed	2013 CVA Apportionment %
Township of Adelaide Metcalfe	\$ 285,695,823	1.5015
Township Brooke-Alvinston	\$ 285,377,725	1.4998
Municipality Chatham-Kent	\$ 2,581,047,548	13.5649
Township Dawn-Euphemia	\$ 424,074,441	2.2288
Township Enniskillen	\$ 316,851,600	1.6652
Municipality Lambton Shores	\$ 873,252,452	4.5895
Township Middlesex Centre	\$ 358,101,574	1.8820
Village Newbury	\$ 28,335,080	0.1489
Village Oil Springs	\$ 37,953,290	0.1995
Town Petrolia	\$ 479,002,968	2.5174
Town Plympton-Wyoming	\$ 903,643,585	4.7492
Village Point Edward	\$ 460,908,134	2.4223
City Sarnia	\$ 7,892,572,844	41.4801
Municipality Southwest Middlesex	\$ 195,688,822	1.0285
Township St. Clair	\$ 2,040,695,392	10.7250
Township Strathroy - Caradoc	\$ 1,491,157,742	7.8369
Township Warwick	\$ 373,023,562	1.9605
	<b>\$ 19,027,382,580</b>	<b>100</b>

2014 Municipal General Levy : \$28,170 increase over 2013



2014 Current Value Assessment (modified) in Watershed	2014 CVA Apportionment %
\$ 346,974,033	1.6777
\$ 326,493,830	1.5786
\$ 2,739,470,190	13.2456
\$ 505,645,240	2.4448
\$ 355,691,445	1.7198
\$ 1,005,236,898	4.8604
\$ 425,889,039	2.0592
\$ 32,486,295	0.1571
\$ 41,716,860	0.2017
\$ 499,484,350	2.4151
\$ 1,037,364,357	5.0158
\$ 495,957,898	2.3980
\$ 8,239,344,974	39.8381
\$ 232,361,219	1.1235
\$ 2,297,368,216	11.1080
\$ 1,685,066,728	8.1475
\$ 415,524,811	2.0091
<b>\$ 20,682,076,382</b>	<b>100</b>

2013 General Levy	2014 General Levy
\$ 9,488	\$ 11,055
\$ 9,478	\$ 10,402
\$ 85,719	\$ 87,280
\$ 14,084	\$ 16,110
\$ 10,523	\$ 11,332
\$ 29,001	\$ 32,027
\$ 11,893	\$ 13,569
\$ 941	\$ 1,035
\$ 1,260	\$ 1,329
\$ 15,908	\$ 15,914
\$ 30,011	\$ 33,051
\$ 15,307	\$ 15,801
\$ 262,119	\$ 262,507
\$ 6,499	\$ 7,403
\$ 67,773	\$ 73,194
\$ 49,523	\$ 53,687
\$ 12,388	\$ 13,239
<b>\$ 631,915</b>	<b>\$ 658,935</b>

# Schedule "B"

## 2014 Conservation Area Maintenance and Operation Budget - November 2013

	2013 Budget	2014 Budget	Special Levy	Non-Matching General Levy
403- Shetland	\$ 7,650	\$ 7,850	\$7,085 (Dawn-Euphemia)	\$ 765
404 - Sinclair	\$ 500	\$ 500		
405 - Wawanosh	\$ 9,500	\$ 9,500	\$8,550 (City of Sarnia)	\$ 950
413 - Clark Wright	\$ 2,350	\$ 2,350	\$1,600 (Strathroy-Caradoc)	
416 - -Bridgeview	\$ 900	\$ 900	\$900 (Town of Petrolia)	
417 - Campbell	\$ 218,400	\$ 251,150		
419 - Coldstream	\$ 1,400	\$ 1,300	\$1,300 (Middlesex Centre)	
448 - Crothers	\$ 1,400	\$ 1,600	\$1,600 (Chatham-Kent)	
455 – Peers	\$ 0	\$ 13,476	\$1.150 (Chatham-Kent)	
458 - Warwick	\$ 419,900	\$ 448,700		
470 - Stranak	\$ 7,900	\$ 8,000	\$8,000 (Chatham-Kent)	
472 - Henderson	\$ 238,700	\$ 257,300		
474 - Strathroy	\$ 18,500	\$ 18,500	\$18,500 (Strathroy-Caradoc)	
485 - McEwen	\$ 11,300	\$ 12,200	\$10,980 (Plympton-Wyoming)	\$ 1,220
489 - Highland Glen	\$ 9,050	\$ 10,000		\$ 10,000
493 - Dodge	\$ 1,000	\$ 2,100	\$2,100 (Lambton-Shores)	
<b>Total</b>	<b>\$ 948,450</b>	<b>\$ 1,045,426</b>	<b>\$ 61,765</b>	<b>\$ 12,935</b>

Notes:

**Regional Conservation Areas** (A.W. Campbell, L.C. Henderson, Warwick, Highland Glen)

**Local Conservation Areas** (Shetland, Wawanosh, McEwen, Clark Wright)

**In Town Conservation Areas** (Strathroy, Coldstream, Dodge, Stranak, Crothers, Bridgeview)

Detailed budgets for specific conservation areas available upon request.

The areas are supported by employment programs, fundraising, friends of groups, St. Clair Region Conservation Foundation and grants programs from corporate and non-profit organizations.

Revenues	Foundation	Reserves	Grant Seasonal Employment
	\$ 500		
	\$ 750		
\$ 249,150			\$ 2,000
\$ 12,326			
\$ 448,700			
\$ 255,800			\$ 1,500
\$ 965,976	\$ 1,250	\$ -	\$ 3,500

**Summary of Authority / Foundation Land Holdings**

	Hectares
Conservation Lands	556
Conservation Forests	81
McKeough Upstream Lands	746
McKeough Dam & Channel	236
Foundations Lands	197
<b>Total</b>	<b>1816</b>
Flood Easements	647

To ensure the wisest use of these lands, the Authority works with the public and private sectors by entering into various lease agreements including agricultural, residential and other resource management leases. 918 hectares are under lease.

2014 Municipal Funding  
Schedule "C"

November 2013

Municipality	2013	2014	2013/2014	2013	2014
	CVA Apport.%	CVA Apport.%	Increase or (Decrease)	General Levy	Proposed General Levy
Adelaide Metcalfe Tp	1.5015%	1.6777%	0.1762%	\$ 9,488	\$ 11,055
Brooke-Alvinston Tp	1.4998%	1.5786%	0.0788%	\$ 9,477	\$ 10,402
Chatham-Kent M	13.5649%	13.2456%	-0.3193%	\$ 85,719	\$ 87,280
Dawn-Euphemia Tp	2.2288%	2.4448%	0.2160%	\$ 14,084	\$ 16,110
Enniskillen Tp	1.6652%	1.7198%	0.0546%	\$ 10,523	\$ 11,332
Lambton Shores M	4.5895%	4.8604%	0.2709%	\$ 29,002	\$ 32,027
Middlesex Centre Tp	1.8820%	2.0592%	0.1772%	\$ 11,893	\$ 13,569
Newbury V	0.1489%	0.1571%	0.0082%	\$ 941	\$ 1,035
Oil Springs V	0.1995%	0.2017%	0.0022%	\$ 1,261	\$ 1,329
Petrolia T	2.5174%	2.4151%	-0.1023%	\$ 15,908	\$ 15,914
Plympton-Wyoming T	4.7492%	5.0158%	0.2666%	\$ 30,011	\$ 33,051
Point Edward V	2.4223%	2.3980%	-0.0243%	\$ 15,307	\$ 15,801
Sarnia C	41.4801%	39.8381%	-1.6420%	\$ 262,119	\$ 262,507
Southwest Middlesex M	1.0285%	1.1235%	0.0950%	\$ 6,499	\$ 7,403
St. Clair Tp	10.7250%	11.1080%	0.3830%	\$ 67,773	\$ 73,194
Strathroy - Caradoc Tp	7.8369%	8.1475%	0.3106%	\$ 49,523	\$ 53,687
Warwick Tp	1.9605%	2.0091%	0.0486%	\$ 12,389	\$ 13,239
				\$631,915	\$658,935

2013/2014 Increase or (Decrease)	3D Mapping	2014				
		Flood Control Oper/Maint	Erosion Control Oper/Maint	Recreation	Capital Development	Total Municipal Funding
\$ 1,567	\$ 755					\$11,810
\$ 924	\$ 710					\$11,112
\$ 1,561	\$ 5,961	\$39,000	\$1,500	\$10,750		\$144,490
\$ 2,026	\$ 1,100			\$7,085		\$24,295
\$ 810	\$ 774					\$12,106
\$ 3,025	\$ 2,187			\$2,100		\$36,314
\$ 1,676	\$ 927			\$1,300		\$15,795
\$ 94	\$ 71					\$1,106
\$ 68	\$ 91					\$1,420
\$ 6	\$ 1,087			\$900		\$17,901
\$ 3,040	\$ 2,257			\$10,980		\$46,288
\$ 494	\$ 1,079		\$2,000			\$18,880
\$ 388	\$ 17,927		\$15,000	\$8,550		\$303,984
\$ 904	\$ 506					\$7,909
\$ 5,422	\$ 4,999	\$2,000	\$1,000		\$160,000	\$241,193
\$ 4,164	\$ 3,666		\$1,000	\$20,100		\$78,453
\$ 850	\$ 904					\$14,143
\$ 27,020	\$45,000	\$41,000	\$20,500	\$61,765	\$160,000	\$987,200

St. Clair Conservation  
Conservation Areas 2014 Proposed Capital Projects

## Warwick Conservation Area

### Warwick Road Replacement:

- Existing main access roadway has become unsafe due to stream bank erosion along the roadway
- Project consists of engineering, land securement and road construction costs
- Estimated cost \$50,000

### Washroom Upgrades to pool washroom building:

- Upgrade exterior siding on shower portion of the building
- Estimated cost \$1,500

### Upgrade roadways with gravel:

- Estimated cost \$7,000

### Picnic tables and site indicators:

- Purchase 15 new picnic tables and 3 new benches
- Install approximately 40 site indicators
- Estimated cost \$4,500

### Replace main Conservation Area sign:

- Existing sign requires replacement
- Estimated cost \$700

**Total capital cost for Warwick: \$63,700**



## L.C. Henderson Conservation Area

### Reservoir weir improvements:

- Current weirs require repair as the concrete surface blocks are beginning to break apart exposing the underlying clay material
- Crossing to be improved with new wire concrete - will provide a wider surface
- Estimated cost \$20,000



Upgrade roadways with gravel:

- Estimate cost \$5,000

Picnic Tables:

- Purchase 15 new picnic tables
- Estimated cost \$4,500

Replace main conservation area sign:

- Existing sign requires replacement
- Estimate cost \$1,500

**Total capital cost for L.C. Henderson \$31,000**

## **A.W. Campbell Conservation Area**

Pool Washroom Upgrades:

- New sinks and counter tops in women's washroom
- New concrete side walk
- A small section of barn board siding to be replaced
- Estimated cost \$2,500

Upgrade roadways with gravel:

- Estimated cost \$4,500

Picnic tables & site indicators:

- Purchase 15 new picnic tables
- Install approximately 20 site indicators
- Estimated cost \$4,500

Replace main conservation area sign:

- Existing sign requires replacement
- Estimate cost \$1,500



**Total capital cost for A.W. Campbell Conservation Area \$13,000**

## **C.J McEwen Conservation Area**

Washroom Upgrades:

- Replace existing washroom partitions with new phenolic partitions (existing partitions were installed when the building was constructed in the late 1970's)
- Estimated cost \$ 3,000

**Total Proposed Capital Costs for Conservation Areas \$110,700**

## Outline of Erosion Control Structure Maintenance for 2014

The following structures were constructed with Authority project management and grant from the Ministry of Natural Resources and as a result these projects are eligible for potential funding to support the maintenance of these projects. The potential grants are for inspection and maintenance of the structures at a grant rate of 50%.



### **Sarnia Erosion Control Project**

The Sarnia Erosion Control Project protects Old Lakeshore Road, the adjacent properties and their access and major utilities in Brights Grove. Constructed between 1989 and 2001, the project remains in good condition. Continued monitoring of the conditions of the work will avoid major maintenance costs in the future. Planned works for 2014 include: continued control and removal of woody vegetation, placement of rip rap to improve pedestrian access and reduce safety concerns and improvements to viewing platforms and access stairs. A sheet pile groyne located east of Pine Avenue was replaced in 2013

### **Cathcart Park Shoreline Rehabilitation Project**

The first and second phase of work has been completed on the shoreline protection at Cathcart Park in St. Clair Township. The study/design phase of this project was started in 2009 to protect and improve approximately 1,000 meters of shoreline. The work is geared to replace a failing steel sheet pile wall with a revetment comprised of stepped armour stone and sloped rip rap. The second phase of construction was completed in February 2013 and provided protection to about 100 meters of Shoreline. The Third Phase of work is planned for 2014 to provide shoreline rehabilitation to another 100 meters of St. Clair River shoreline.







### **Point Edward Erosion Control Project**

The Point Edward Erosion Control Project is located on the St. Clair River in the Point Edward Waterfront Park and was constructed in 1995. The project is in good condition but is impacted annually by vandalism and loss of material due to stone shifting from wave and ice action. The timber curb that defines the boundary between the structure and the adjacent grass areas along the walkway is beginning to break down and will require gradual replacement over the next several years. Annual inspections and minor maintenance will ensure the longevity of the protection.

Works planned for 2013 will include: timber curb replacement, placement of additional clear stone in the voids on the top of the structure and the control of woody vegetation.



### **Wallaceburg Retaining Walls**

Many of the retaining walls in the community of Wallaceburg were constructed with SCRCA project management and provincial grant. Most of the projects are in fair condition but will be requiring maintenance of one form or another over the next several years. Annual inspections and minor maintenance will ensure the protection of the properties. Removal of oversized woody vegetation and placement of various sizes of rip rap at several locations to control minor erosion issues are anticipated works for 2014.

### **Minor Maintenance of Authority Structures**

An Engineering study carried out in 2012 pointed out the need for minor maintenance of several authority structures. Most structures are in good condition; however some cracks have appeared and should be repaired. SCRCA will establish a repair program in 2014 and minor cracks will be fixed at the following structures:

- 1) Petrolia Dam
- 2) Head Street Dam
- 3) Coldstream Dam





St. Clair Region Conservation Authority  
205 Mill Pond Crescent, Strathroy, Ontario, N7G 3P9  
(519) 245 – 3710 (519) 245 – 3348 FAX  
[stclair@scrca.on.ca](mailto:stclair@scrca.on.ca)  
[www.scrca.on.ca](http://www.scrca.on.ca)

member of



Conservation Ontario Website  
[www.conservation-ontario.on.ca](http://www.conservation-ontario.on.ca)

# Staff Report

14.(i)



To: Board of Directors  
Date: February 11, 2014  
From: Brian McDougall, General Manager  
Subject: General Manager's Report

---

➤ **2013** Last year was another very successful year in program development and delivery. The development of these diverse conservation programs at the St. Clair would not be possible without the support of our Board which encourages a progressive and entrepreneurial approach in the development of new opportunities that benefit our member municipalities and resource management in the region. We take a business-like approach to public service and conservation in our region and in a financially responsible manner. Staff consistently and successfully seeks funding partners to support our programs and services. For every \$1 of municipal levy, we raise almost \$9 from other sources. Staff wishes to sincerely thank the Board members for their support and contributions to the Authority over the past year. We look forward to working with the Board, our member municipalities and our hundreds of partners in providing a comprehensive watershed management program throughout the region. One of our greatest strengths is that our conservation programs are locally driven. With issues such as climate change, a challenging economy, redistribution of responsibilities by upper levels of government, the responsibility of providing safe and healthy watersheds is becoming more complex. Your support in making the critical decisions needed is important for the environmental well being and safety of the residents in the watersheds. The work we do today not only impacts ours, but future generations as well. Your continued interest and support is sincerely appreciated.

➤ **Audit** Woods Pearson Associates have completed the 2014 audit. Ken Williams of Woods Pearson presented the audit to the Board of Directors on February 6, 2014. The audit produced no issues and the Board of Directors accepted the audit as presented. This was the final year of a five year agreement with Woods Pearson Associated. Staff are drafting a request for quotations which will be sent out to qualified firms that have experience with Conservation Authorities and a summary of quotes as well as a recommendation will be presented to the Board at their April 17<sup>th</sup> meeting.

- ☞ **2014 Proposed Budget** The draft budget was forwarded to member municipalities in November. Changes based on carry forwards, year-end audit adjustments, etc. have been included in the budget but there was no impact on general levy from the 2014 draft budget.
- 2014 Budget Process
  - September 19, 2013 - Draft 2014 budget reviewed and recommendation for circulation by Board
  - November 2013: Draft budget updated to include modified current value assessments to calculate municipal levy and circulated to member municipalities for information and input
  - December 12, 2013 - Board reviewed municipal feedback
  - February 6, 2014 - Board reviews minor amendments based on the audit and year-end adjustments and recommends the budget to the Annual General Meeting for approval
  - February 20, 2014 - Annual General meeting and final budget approval
  - Provincial Funding: the 2014 allocation for Provincial Grants to support Flood and Erosion Control Operations and Maintenance, Planning, Technical studies and Administration has not changed since 1997, (\$310,000 – annually) The province uses the Authority’s business plan for funding consideration.
  - The Authority budget is required to be passed prior to the end of February, however the Provincial grants will be unknown until later in the year. This will not affect the municipal levy.
- ☞ **Voting Procedure** Procedures for voting on Matching and Non-Matching levy have not changed. However, a copy of the procedure is included in the package for your information and review.
- ☞ **Members Orientation** An Orientation, open to all Board Members but focused on new members is scheduled for March 27<sup>th</sup> at 10:00 am at the Authority’s Administrative Offices in Strathroy. Please rsvp to Marlene at 519-245-3710 x257 or at [mdorrestyn@scrc.ca](mailto:mdorrestyn@scrc.ca) to confirm your attendance. A updated list of Board members and their contact information is attached for your convenience.
- ☞ **Updated Meeting Schedule** Attached is a revised meeting schedule for 2014. The Project Tour and Board Meeting in June has been moved to June 26, 2014, due to the conflict with the Great Lakes & St. Lawrence Cities Initiative Annual Conference has become an annual conflict with the third Thursday in June and merit consideration of a permanent change for future scheduling.

➤ **Outstanding Farmer/Conservation Farm Award**

The Conservation Authority in partnership with the Lambton Soil and Crop Improvement

Association (LSCIA) presented the award at the LSCIA Annual General Meeting held January 17<sup>th</sup> in Alvinston. Steve Arnold presented the award on behalf of the Conservation Authority. The award winners this year were Don and Irene VanGorkum.



John Phair GMI Agency  
Don and Irene VanGorkum were presented with the Outstanding Farmer of the Year Award. With them are Lambton Soil and Crop Improvement Association director Fraser Hodgson (left), Steve Arnold of the St. Clair Region Conservation Authority (second from right) and Dave Currie of Parkland Farms. The presentation was made at the association's annual meeting in Alvinston.

➤ **Municipal Presentations** Staff is available, at your request, for presentations to council or committees on any programs and services of the Conservation Authority or Foundation. We would be pleased to address council on any issue of interest.

**Member  
Municipalities**Township of  
Adelaide-Metcalf

February 12, 2014

14.(i)

Township of  
Brooke-AlvinstonMunicipality of  
Chatham-KentTownship of  
Dawn-EuphemiaTownship of  
EnniskillenMunicipality of  
Lambton ShoresMunicipality of  
Middlesex CentreVillage of  
NewburyVillage of  
Oil SpringsTown of  
PetroliaTown of  
Plympton-WyomingVillage of  
Point EdwardCity of  
SarniaMunicipality of  
Southwest MiddlesexTownship of  
St. ClairMunicipality of  
Strathroy-CaradocTownship of  
Warwick**M E M O R A N D U M :****TO:** All Directors**RE:** Invitation to Orientation Meeting

We will be holding an orientation session at the Administration Office on March 27th from 10:00 to 11:30 a.m. with a light lunch to follow. This will give you an opportunity to discuss Authority programs and projects with senior staff. While this is primarily intended for new members, all directors are more than welcome to attend. Please let Marlene know by March 21<sup>st</sup> if you would like to attend so we can prepare for the orientation and make lunch arrangements.

If you have any questions regarding the upcoming meeting or about the Authority, please give me a call. Our toll free number is 1-866-505-3710. We have an exciting year ahead and look forward to your contribution. We look forward to meeting you on February 20<sup>th</sup> in Dresden.



Brian McDougall  
General Manager

:md

Encl.

2014 Members Appointed to the St. Clair Region Conservation Authority

Adelaide Metcalfe	1	Betty Ann MacKinnon, 24394 Dundonald Rd., R.R. # 2, Glencoe, N0L 1M0	519-287-2699
Brooke Alvinston	1	Frank Nemcek, 2973 Ebenezer Road, R.R. # 1, Alvinston, N0N 1A0	519-847-5591
Chatham- Kent	1	Joe Faas, 368 Hughes Street, Box 977, Dresden, N0P 1M0	519-436-3208
Chatham- Kent	1	Anne Gilbert, 450 Bayview, P.O. Box 269, Erieau, N0P 1N0	519-436-3205
Dawn- Euphemia	1	Bill Bilton, R.R. # 2, 955 Kerry Road, Florence, N0P 1R0	519-695-3701
Enniskillen/ Oil Springs	1	Kevin Marriott, 5383 Shiloh Line, R.R. # 1, Petrolia, N0N 1R0	519-844-2307
Lambton Shores	1	Elizabeth Davis-Dagg, 7159 Uttoxeter Road, Plympton-Wyoming, N0N 1J5	519-466-2520
Middlesex Centre	1	Ben Phay, 104 Union Avenue, Komoka, N0L 1R0	519-204-2701
Petrolia	1	John McCharles, 284 Evergreen Trail, Petrolia, N0N 1R0	519-882-2455
Plympton Wyoming	1	Netty McEwen, 3859 Egremont Road, P.O. Box 66, Camlachie, N0N 1E0	519-899-4030
Point Edward	1	John Romlewski, 106 Alfred St., Point Edward, N7V 1T2	519-466-3073
Sarnia	1	Terry Burrell, 954 Champlain Road, Sarnia, N7V 2G2	519-336-5545
Sarnia	1	Anne Marie Gillis, 65 Ashby Cres, Sarnia, N7S 4L5	519-542-9728
Sarnia	1	David Boushy, 1413 Lakeshore Rd., Sarnia, N7S 2M3	519-542-3109
Southwest Middlesex/ Newbury	1	Don McCallum, 80 Victoria Drive, Melbourne, N0L 1T0	519-289-2053
St. Clair	1	Steve Arnold, 3256 Douglas Street, Wilkesport, N0P 2R0	519-381-7440
St. Clair	1	Steve Miller, 4238 St. Clair Pkwy., Port Lambton, N0P 2H0	519-677-5676
Strathroy/ Caradoc	1	Norm Giffen, 215 Riverview Drive, Strathroy, N7G 2G4	519-245-1100
	1	Tony Bruinink, R.R.# 2, 2550 Emerson, Mt. Brydges, N0L 1W0.	519-264-9750
Warwick	1	Rod Glen, 600 McGregor Place, Watford, N0M 2S0	519-876-2342





## 2014 Tentative Schedule of Meetings

---

**Board of Directors:** February 20 (3<sup>rd</sup> Thursday) - Annual General Meeting (Dresden)  
April 17 (3<sup>rd</sup> Thursday)  
June 26 (4<sup>th</sup> Thursday) – new date  
September 18 (3<sup>rd</sup> Thursday)  
November 13 (2<sup>nd</sup> Thursday)  
December 11 (2<sup>nd</sup> Thursday)

**Executive Committee:** at the call of the chair.

All Board of Director and Executive Committee meetings are held at the Administration Office at 10:00 a.m., with the exception of the June meeting which follows the Project Tour.

**Regulations Committee:** at the call of the General Manager.

**Flood Action Committee:** January 9 (2<sup>nd</sup> Thursday) and at the call of the Chair

**Low Water Response:** May 15 (3<sup>rd</sup> Thursday) and at the call of the Chair

**Nominating Committee:** at the call of the chair.

Please Note: This is a tentative schedule and circumstances may necessitate changes. Accordingly, these dates should be confirmed with the Administration Office prior to the meeting date.

# Staff Report

To: SCRCA Board of Directors

14. (ii)

Date: February 10, 2014

From: Steve Clark, Water Resources\SWP Data Technician

Subject: Current Watershed Conditions



## Watershed Precipitation and Streamflow Conditions

Winter conditions have been experienced across the watershed since early December with mean temperatures in December of minus **3.7** degrees and then significantly colder in January with minus **9.7** degrees. With lower temperatures significant snow accumulations were experienced in northern areas resulting from snowstorm events influenced by lake effect snow in early December and into January. A slight warming trend was experienced early in January resulting in some floodplain areas being inundated only to freeze again after a few days. Flows were increased at this time with the combined snow melt coupled with **20 to 30mm** of rain received over the period (fig 1). During the remainder of the month and into February temperatures have remained extremely cold with both snow and ice accumulation. This has minimized any significant changes flow conditions throughout the watershed as they revert to normal levels.

Fig 1. Comparison by Station – (January 2014 to February 2014) SCRCA data.

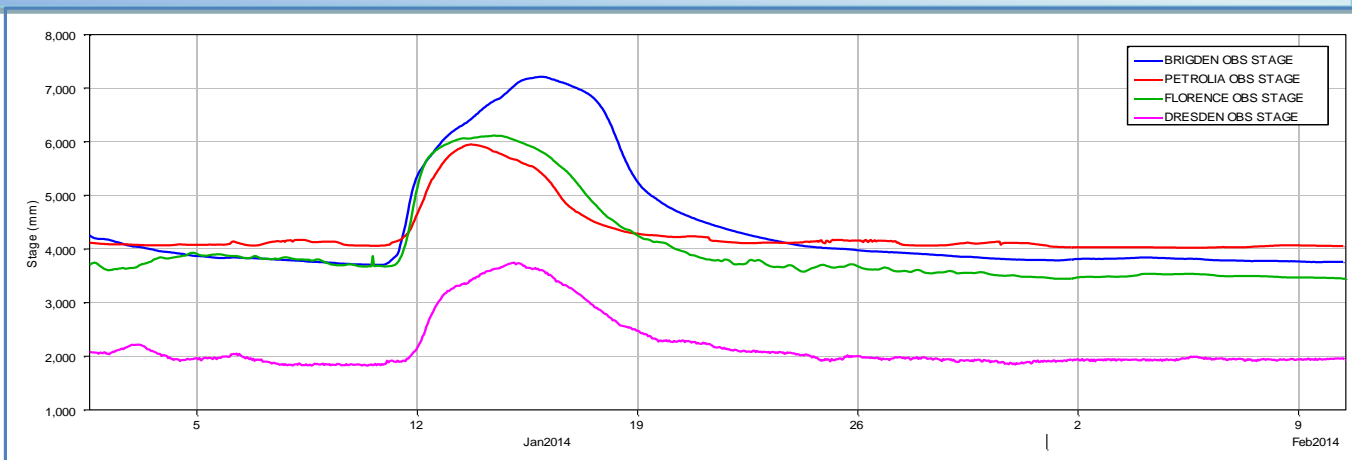


Fig 2. Regional Precipitation – (Source: Environment Canada – Canadian Climate Data Averages) 1971-

Regional precipitation numbers (fig 2) indicate near normal monthly precipitation with the exception of Sarnia most likely due to the influence of lake effect snow accumulations. Quarterly numbers remain **22%** and the last six month period remains on average at **99.9%** and the yearly average is above average at **116%** of normal.

Precipitation (mm)	Sarnia		Strathroy		London		Windsor	
	Actual	Normal	Actual	Normal	Actual	Normal	Actual	Normal
<b>Last Quarter</b>								
January	118	50.1	79	75.3	49.6	74.2	79.6	57.6
December	89	68	78	92.4	68	88.6	91	74.7
November	51	66	104	70.8	155	77.6	82	64.9
<b>Averages</b>								
last 3 month totals	258	184.1	261	238.5	272.6	240.4	252.6	197.2
last 3 month % of normal	140.1%		109.4%		113.4%		128.1%	
regional average	<b>122.8%</b>							
last 6 month totals	444	431.6	594	504.9	476.6	514.5	387.6	448.6
last 6 month % of normal	102.9%		117.6%		92.6%		86.4%	
regional average	<b>99.9%</b>							
last 12 month totals	1054.1	846.8	1162.4	945.1	980.3	987	1108.8	918.4
last 12 month % of normal	124.5%		123.0%		99.3%		120.7%	
regional average	<b>116.9%</b>							



## Snow and Ice Conditions and Flood Threat

Snow and ice conditions are monitored on a bi-weekly basis together with the integrity of river ice at strategic locations. Currently snow depths range from **2 inches (5cm)** in the south to **10 inches (25cm)** at Warwick in the north (fig 3). Water equivalents (fig 4) range from **1 inch (20mm)** to **2.5 inches (55mm)** and are expected to continue to increase with the ongoing cold temperatures. Currently watercourses have approximately **8 to 12 inches** of blue and white slightly deteriorated ice with some open sections near higher flow areas. All areas are anticipated to thicken into February with

the extremely cold temperatures and increased snow cover. Some ice jams have been noted in the St. Clair River but ice remains solid and in place in the Chenal Ecarte, upstream into the Sydenham River and most of the watershed. **With significant snowpack on the ground and lower temperatures there are no current issues regarding flooding however, with the current snow and ice conditions, there is potentially an elevated flood risk should temperature and precipitation conditions change suddenly as we move into the freshet period.**

Fig 3. Snow depth by location – (Source: SCRCA Data)

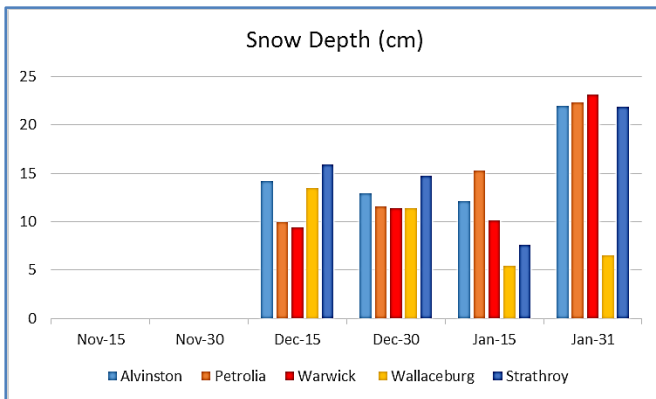
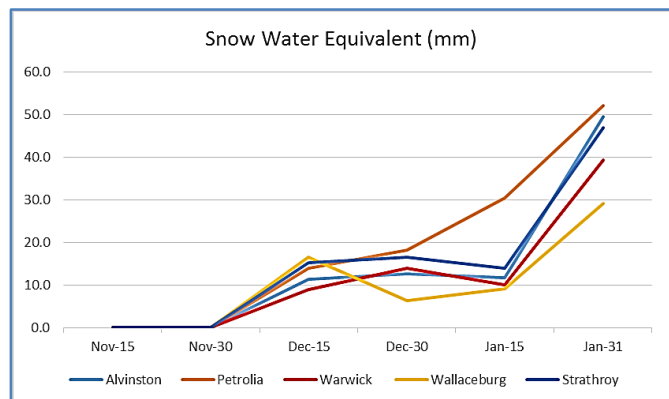


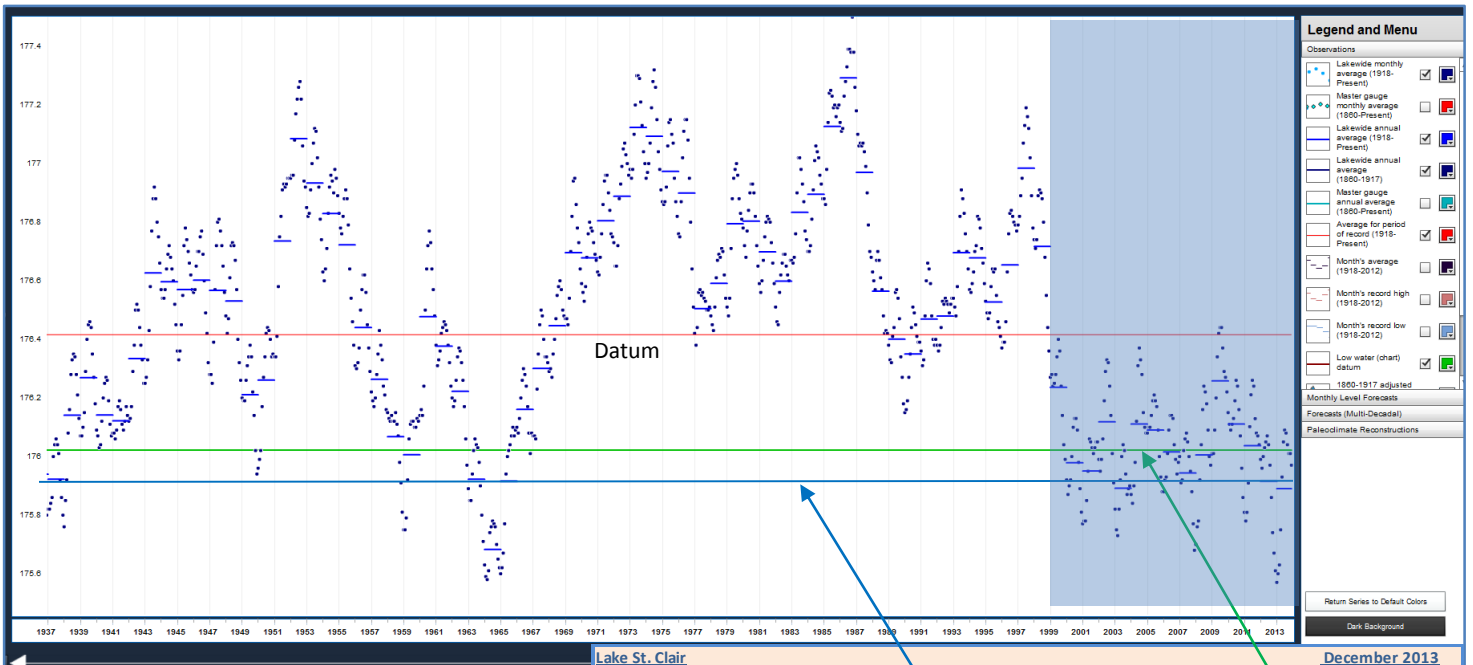
Fig 4. Snow Water Equivalent – (Source: SCRCA Data)



## Weather Forecast (Weather Network, Environment Canada, OFA)

February	<ul style="list-style-type: none"> <li>Potential slight warming trend near end of the month with average snow accumulations</li> </ul>
Winter	<ul style="list-style-type: none"> <li>Temperatures will continue to be cooler overall with coldest periods in both mid-January and February. Snowfall will be reduced as Lake Huron freezes over reducing lake-effect snow conditions. Precipitation below normal into spring.</li> </ul>
12 Month Outlook	

## Historical Overview - Great Lakes Levels (NOAA Great Lakes Environmental Research 1948 to 2013)

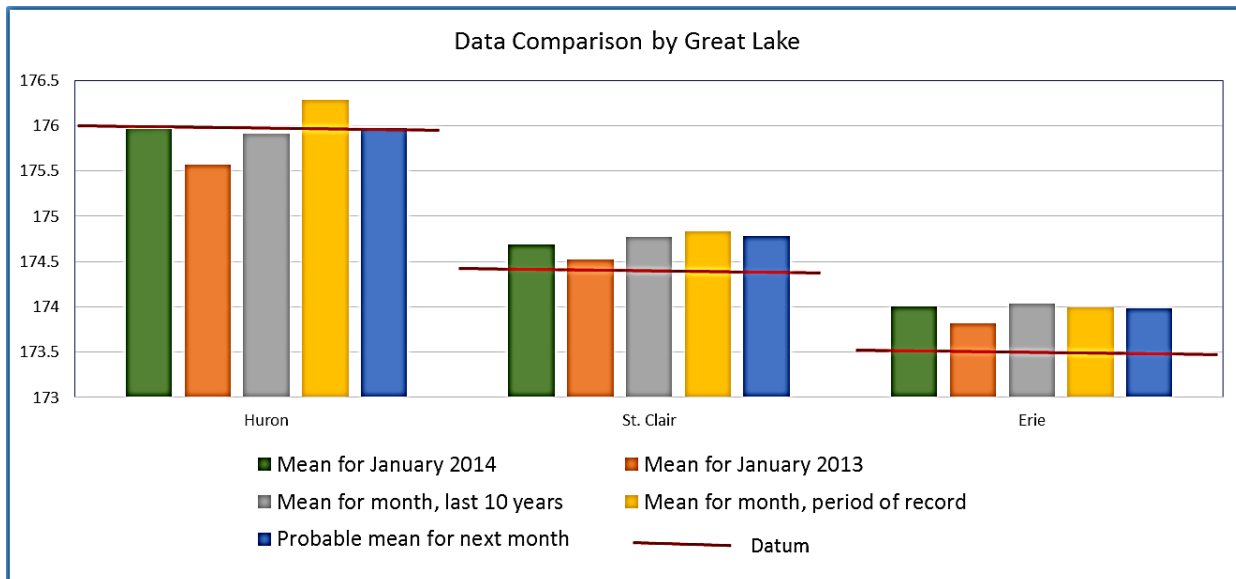


When long term historical statistics are compared for the current month data with the entire period of record (96 years) for Lake Huron, the last ten years average is 41cm (16 ins) lower than the average for the entire period of record.

Lake St. Clair		December 2013					
Units	Current Monthly Level	Monthly Level Last Year	Change 2012/2013	Current Month Average for Last 10 Years	Change Current compared to 10 year	Anticipated Next Month	Average for Period of Record
Metric (m)	174.79	174.54	0.25	174.77	0.02	174.80	174.90
Imperial (ft)	573.46	572.64	0.82	573.39	0.07	573.49	573.82
Lake Huron							
Metric (m)	175.97	175.61	0.36	175.92	0.05	175.95	176.33
Imperial (ft)	577.33	576.15	1.18	577.16	0.16	577.26	578.51

### Current Lake Levels (January 2014)

All three lakes continue to be close to the 10 year average however, as noted above, the last 10 year average is now lower than any previous 10 year period as well as the average for the period of record.

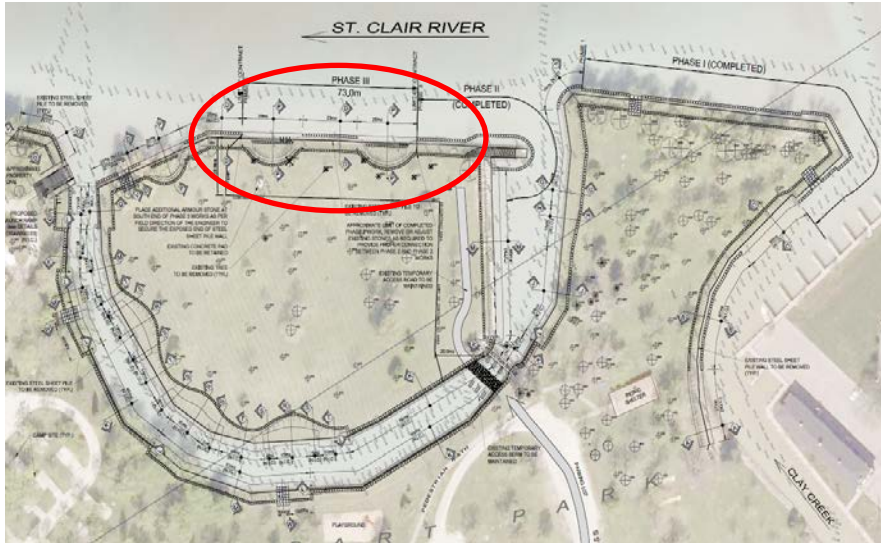


# Staff Report

14.(iii)



To: Board of Directors  
Date: February 11, 2014  
From: Girish Sankar, Water Resources Engineer  
Subject: Cathcart Park Shore Protection Revitalization, Phase III



- December 20<sup>th</sup> 2013 - Township and Authority staff met on site with the design engineer, site supervisor and representatives of the contractor (Van Bree Contracting)
- construction work started second week of January 2014.
- approximately 100 m of shoreline work will be completed in this phase.

- two habitat pods will be constructed along the shoreline to enhance the habitat features
- 25 working days have been provided for completion of the project under the contract (a working day is any day during which the conditions permit the contractor to be able to undertake work to greater than 60 percent of capacity).
- Shoreplan Engineering is providing supervision for the project and site meeting will be held weekly.
- construction of phase III work is expected to be completed by end of February 2014.



# Staff Report

14.(iv)



To: Board of Directors  
Date: February 10, 2014  
From: Girish Sankar, Water Resources Engineer  
Subject: Water & Erosion Control Infrastructure (WECI) Projects

---

- applications for grants have been submitted for funding for in 2014-2015 for the project in the table below
- applications will be reviewed by a committee of provincial and conservation authority staff representatives later this month and will be ranked in comparison to all submitted projects from across the Province
- List of approved projects is anticipated in May or early June

Structure	Project Name	Description of Work	Total Project Cost (\$)	Grant Requested (\$)
Cathcart Park	Cathcart Park Shoreline Protection - Phase 4	Design, tender and rehabilitate about 200 m of shoreline at Cathcart Park (Phase 4 construction).	600,000	300,000
Lambton area water supply system	Shoreline Repair	Rehabilitate about 280 m of shoreline at the mouth of St. Clair River using armourstone and riprap.	600,000	300,000
Sarnia Shoreline Protection	Shoreline Repair (Helen and Kenwick st) Phase 1	Carry out construction of Phase 1 from the recommendation of Engineering study.	500,000	250,000
McKeough Floodway	McKeough Floodway Berm Repair	Perform repair work along the floodway	\$80,000	\$40,000
McKeough Floodway	McKeough Dam Drop structure/ Gate house concrete repair	Repair several cracks in concrete slabs and barrier walls	\$60,000	\$30,000
McKeough Floodway	McKeough -Hazard Tree Removal	Remove trees, shrubs and debris that have the potential to cause slope stability issues	\$8,000	\$4,000
Esli Dodge	Esli Dodge Repair Project	Repair of Concrete cable/ retaining wall	\$10,000	\$5,000
L.C.Henderson	L.C.H. Outfall repair [project	Spillway Repair	\$20,000	\$10,000

January 31, 2014

TO: SCRCA Chair and Board of Directors

SUBJECT: Administration – Section 28 – Development, Interference of Wetlands and Alteration to Shorelines and Watercourses Regulation

FROM: Dallas Cundick, Environmental Planner / Regulations Officer

A summary of staff activity related to the Conservation Authority's *Development, Interference of Wetlands and Alterations to Shorelines and Watercourses Regulation* (Ontario Regulation 171/06 under Ontario Regulation 97/04) is presented below. This report covers the period from November 1, 2013 to January 31, 2014.

## November 1 to November 30, 2013

FA #	Applicant and Subject Property	Permit Required to:	Section 28 of the Conservation Authority's Act "Development, Interference with Wetlands and Alterations to Shorelines & Watercourses" Regulation Permissions may be granted where in the opinion of the CA, the control of Flooding, Erosion, Dynamic Beach, Pollution, or the Conservation of Land will not be affected by the development.	Date Permit Issued
10825	<b>Patrick &amp; Margaret Uhlman</b> 389 Northridge Place Lot 14, Conc. 11 Geographic Township of Enniskillen County of Lambton	Construct ~1522 sq. ft. single family dwelling with attached car garage.	<ul style="list-style-type: none"> <li>Dwelling and all development will be located greater than 15m from the top of bank of the ravine system associated with Bear Creek;</li> <li>All surface and subsurface drainage will be controlled on the subject property as per certified lot grading plan completed by Nisbet, Robertson;</li> <li>Excess fill to be taken off site;</li> </ul>	Nov 1
10839	<b>Jeff Palocz</b> 938 Smith Line Lot 10, Conc. 11 Geographic Township of Sombra County of Lambton	Excavate a wetland to retain water throughout the year ~2023m <sup>2</sup> wetland will be created,	<ul style="list-style-type: none"> <li>excavated material to be located outside the flood hazard limit;</li> <li>no impact to flood flows, elevations or velocities;</li> <li>existing grades to be maintained;</li> <li>Works are located 100m from the Sydenham River;</li> <li>Disturbed areas will be stabilized immediately and seeded or returned to original condition or better;</li> <li>Erosion and sediment control measure will be implemented to ensure that silt sediment and debris is isolated and contained;</li> </ul>	Oct 29
10841	<b>Manny Baron, Town of Petrolia</b> 4130 Glenview Road Lot 12, Concession 10 Geographic Township of Enniskillen County of Lambton	Construct a 20,300 sq. ft. Family Health Team Building	<ul style="list-style-type: none"> <li>SWM will ensure there is no adverse effect on the control of flooding, erosion or the ecological and hydrological function of the watercourse;</li> <li>Existing storm water outfall will be maintained and appropriate stormwater quality and quantity controls will be utilized on-site to ensure that post development flows do not exceed pre development flows;</li> <li>Proposed development is outside of the development setback (erosion hazard limit);</li> <li>No grading changes, excavations, site alterations, fill placement, development etc. will be completed within the 55.5m development setback;</li> <li>All surface and subsurface drainage will be controlled on the subject property and directed away from the top of the bank;</li> </ul>	Nov 28

10842	<b>Brent Erickson</b> 4739 Riverside Drive Lot E, Concession 5 Geographic Township of Sombra Township of St. Clair	Construct a Guest Cottage-one storey with engineered foundation, crawl space only, no basement	<ul style="list-style-type: none"> <li>• Lowest opening into the cottage will be at an elevation higher than 177.3m C.G.D;</li> <li>• Fill will be placed to a minimum elevation of 177.3m for a horizontal distance of 1.6m from the external walls of the structure;</li> <li>• Structure to be located approximately 10m from top of bank of existing seawall;</li> <li>• Existing grades will be maintained- no grading changes required between proposed dwelling and the top of bank of the Chanel Ecarte;</li> <li>• Drainage from structure will be directed away from the bank of the watercourse to a well vegetated area and controlled on the subject property;</li> </ul>	Nov 28
10843	<b>Terry Chupa</b> Tecumseh Road Lot 19, Concession 7 Geographic Township of Moore County of Lambton	Conduct an Integrity dig for the repair of a high pressure natural gas pipeline	<ul style="list-style-type: none"> <li>• all disturbed areas will be returned to pre-construction grade and conditions;</li> <li>• excess material will be removed from site;</li> <li>• Exposing the pipeline to conduct a visual inspection, conducting any necessary repairs and restoring the soil and vegetation</li> <li>• All sediment and erosion control measures will be installed prior to commencement of the works and maintained until all disturbed areas have been rehabilitated to pre-construction conditions, at which time they will be removed</li> </ul>	Nov 14
10844	<b>Kerwood Wind Inc. – Nancy O’Blenes, C/O Garrad Hassan</b> 2173 Mullifarry Drive Lot 10, Concession 3 SER Geographic Township of Adelaide, Township of Adelaide-Metcalf County of Middlesex	Complete watercourse crossing for an access road, and watercourse crossing for collection cable	<ul style="list-style-type: none"> <li>• Work to be completed as per design report for Turbine Access Road Water Crossing prepared by C.C. Tatham and Associates Ltd. Consulting Engineers, Titled: Nextera Energy Canada ULC Adelaide Wind Energy Centre, County of Middlesex, Province of Ontario, dated July 2013, CCTA File 412412;</li> <li>• Works will have no impact on flood flows or elevations;</li> <li>• Work to be completed as per report completed by GL Garrad Hassan, Renewable Energy Consultants, Titled: St. Clair Region Conservation Authority Permitting, Adelaide Wind Energy, Dated: June 6, 2013, containing Appendix A, B, C, D, E, F, G, H, I;</li> <li>• Disturbed soils are to be stabilized and re-vegetated immediately after completion of the works.</li> </ul>	Nov 25

**December 1 to December 31, 2013**

FA #	Applicant and Subject Property	Permit Required to:	Section 28 of the Conservation Authority`s Act “Development, Interference with Wetlands and Alterations to Shorelines & Watercourses” Regulation Permissions may be granted where in the opinion of the CA, the control of Flooding, Erosion, Dynamic Beach, Pollution, or the Conservation of Land will not be affected by the development.	Date Permit Issued
10845	<b>James &amp; Elaine Kerwin</b> St. Clair Parkway, Part 3, 24R-7311 Part Lot B, Concession 4 GORE Geographic Township of Chatham Municipality of Chatham-Kent	Construction of a Single Family Dwelling (1289 sq. ft.) and unattached Garage (777 sq. ft.)	<ul style="list-style-type: none"> <li>• Minimum opening into the new dwelling and garage will be at an elevation higher than 177.00 C.G.D;</li> <li>• Fill will be placed to a minimum elevation of 177.00m C.G.D. for a minimum horizontal distance of 2m from the external walls of the structure;</li> <li>• Drainage will be controlled on the property as per certified lot grading plan completed by Nesbit, Robertson.</li> </ul>	Dec 19



January 1 to January 31, 2014

FA #	Applicant and Subject Property	Permit Required to:	Section 28 of the Conservation Authority's Act "Development, Interference with Wetlands and Alterations to Shorelines & Watercourses" Regulation Permissions may be granted where in the opinion of the CA, the control of Flooding, Erosion, Dynamic Beach, Pollution, or the Conservation of Land will not be affected by the development.	Date Permit Issued
10822	<b>Hilton Peter Johnson</b> 3364 St. Clair Parkway Lot B, Concession 12 Geographic Township of Sombra County of Lambton	Construct a dock in the St. Clair River.	<ul style="list-style-type: none"> <li>• Dock decking is adjustable/removable by design so as not to be subject to flood and ice damage. Dock decking may have to be adjusted/removed in the fall and not replaced until after spring/ice flows;</li> <li>• Dock walkway is to be suitably anchored to the shoreline to ensure no adverse impact on bank stabilization or aggravation to flooding/ice jamming;</li> <li>• Natural stream bank vegetation is to be maintained and works must not cause interference with the natural features and hydrologic and ecological functions of the river;</li> </ul>	Jan 9
10828	<b>Mike Jardine</b> 3368 St. Clair Parkway Lot B, Concession 12 Geographic Township of Sombra County of Lambton	Construct a dock in the St. Clair River.	<ul style="list-style-type: none"> <li>• Dock will be adjustable/removable by design to compensate for changes in the level of the river and ice;</li> <li>• Dock may have to be adjusted/removed in the fall and not replaced until after the spring/ice flows;</li> <li>• Dock walkway is to be suitably anchored to the shoreline to ensure no adverse impact on bank stabilization or aggravation to flooding/ice jamming;</li> <li>• Natural stream bank vegetation is to be maintained and works must not cause interference with the natural features and hydrologic and ecological functions of the river;</li> </ul>	Jan 8
10830	<b>Rural Lambton Stewardship Network</b> <b>Lindsay Buchanan</b> Churchill Line Lot 19, Concession 14 Geographic Township of Brooke County of Lambton	Wetland Creation Project, Construct 3 berms	<ul style="list-style-type: none"> <li>• Berms will have proper slopes which will be seeded, erosion protection, and overflow as per engineered designs completed by R.Dobbins Engineering Inc., Project Number: 2013-341, Drawing Name: King Development Plan, King Wetland/Pond Development Plan, Pages 1-4;</li> <li>• All disturbed areas will be properly stabilized and re-vegetated;</li> <li>• Works will be completed in dry/frozen conditions, and proper sediment and erosion control details will be installed prior to construction, and maintained until the site is stabilized and seeded, to ensure that silt, sediment, and debris is contained and isolated and not transported to downstream watercourse;</li> </ul>	Jan 9
10833	<b>Ray Dobbin Engineering Inc. &amp; Township of Enniskillen</b> Fairweather Road Lots 3 & 4, Concession I Geographic Township of Enniskillen County of Lambton	Complete like for like replacement of existing culvert on Fairweather road over Black Creek	<ul style="list-style-type: none"> <li>• Like for like replacement, no adverse impacts to upstream or downstream flood flows, velocities, elevations;</li> <li>• Drawings completed by R. Dobbin Engineering Inc., Titled: Township of Enniskillen, Black Creek Bridge Temporary Culvert Diversion, Project No. 2012-311, Drawing Name: Black Creek Plan, Drawing 1 of 1, dated Nov. 29, 2013;</li> <li>• Sediment and Erosion Control measures will be installed prior to commencement of works and be maintained until all disturbed areas have been rehabilitated to pre-construction conditions, at which time they will be removed;</li> <li>• Construction area is to be restored to original condition, and all unused debris will be moved offsite;</li> </ul>	Jan 21
10846	<b>Enbridge Pipelines Inc.</b> <b>Darrin Drumm</b> 1010 Plank Road	Modifications at Sarnia Terminal	<ul style="list-style-type: none"> <li>• Replacement/Upgrade of Existing Equipment) In relation to Pipeline (Line 9B) Reversal of flow, and Pipeline (Lines 9 &amp; 7) Capacity Expansion;</li> <li>• All above ground structural, mechanical and electrical modifications and works</li> </ul>	Jan 8

	Lot Block B, Concession 0 Geographic Township of Sarnia County of Lambton		<p>are floodproofed to a level no lower than 0.5m higher than the existing grade elevation at the location of the proposed works;</p> <ul style="list-style-type: none"> <li>• Modifications/works will not encroach closer to the edge of the watercourse than the existing infrastructure;</li> <li>• Sediment and Erosion Control measures will be installed prior to commencement of works and be maintained until all disturbed areas have been rehabilitated to pre-construction conditions, at which time they will be removed;</li> </ul>	
10848	<b>Travis Bouma</b> Queen Street Lot 7, Concession 10 Geographic Township of Plympton County of Lambton	Construct a single family dwelling with attached 2-car garage	<ul style="list-style-type: none"> <li>• The new dwelling and all construction activities at its closest location to the shoreline will be situated outside of the stable slope allowance plus 100 yr. RR (71.5m from bottom of bank);</li> <li>• All surface and subsurface drainage will be controlled on the subject property as per certified lot grading plan completed by Nisbet, Robertson, J.D. &amp; T.M Nisbet Inc.;</li> </ul>	Jan 7
10849	<b>James McGee</b> 4096 St. Clair Parkway Pt. Lot E, Concession 8 Geographic Township of Sombra County of Lambton	Supplementing existing shoreline protection	<ul style="list-style-type: none"> <li>• no alterations to existing shoreline;</li> <li>• No in water works are necessary;</li> <li>• All disturbed areas will be stabilized and returned to original condition or better upon completion of the works;</li> <li>• Rip/Rap to be utilized will be shot rock that has been screened and sorted to remove fine particles and to ensure a minimum cobble size of 5cm;</li> <li>• All sediment and erosion control measures will be installed prior to the initiation of the works and are maintained for the duration of the works;</li> </ul>	Jan 8
	<b>NOVA CHEMICALS 2020 PROJECT</b> 785 Petrolia Line Lots 22 to 24, Con 9 and 10 Geographic Township of Moore Township of St. Clair County of Lambton	<p><u>PRE-CONSULTATION</u></p> <p>Status and progression of File</p> <p>January 2013 to October 2013;</p> <ul style="list-style-type: none"> <li>• Several Meetings held between staff of the SCRCA and NOVA Chemicals for proposed 2020 Project since January 2013;</li> <li>• NOVA 2020 is a multi-year asset strategy to capitalize on emerging feedstock opportunities and growing North American polyethylene demand;</li> <li>• The subject works are the Corunna Site Polyethylene expansion which includes the construction of a solution phase polyethylene facility on NOVA Chemicals' Advanced SCLAIRTECH Technology (AST2);</li> <li>• Expansion is intended to be in an area of existing open space mainly located south of an existing brine storage pond referred to as Lake Tillman;</li> <li>• Portions of the property in the location of the proposed expansion are affected by the Authority's regulation as they are in the vicinity of the Allingham Drain and McClemens Drain;</li> <li>• NOVA has engaged Stantec to complete a Surface Water Drainage and Floodplain Assessment Report to assess the existing and proposed hydrologic and hydraulic conditions and to delineate the existing and proposed Regional Floodplain along the Allingham Drain and McClemens Drain in the vicinity of the proposed AST2 expansion and associated construction envelope;</li> <li>• The objective of the assessment is to ensure that the proposed development may proceed without creating adverse impacts on the existing hydrology, hydraulics and flood inundation zones in the receiving municipal drains and adjacent lands both upstream and downstream of the site.</li> </ul> <p>October 24, 2013</p>		

- Surface Water Drainage and Floodplain Assessment Report was received by staff of the SCRCA;
- Majority of the subject property is identified as being susceptible to flooding during a regional storm flooding event, as an extensive shallow Regional Storm floodplain area along the south side of Lake Tillman exists, in the immediate vicinity of the proposed AST2 expansion;

Proposed mitigation

- Improvements are proposed along the Allingham Drain, which include widening the existing channel while maintaining a low-flow channel to support existing fish habitat, removing an abandoned vehicular access crossing, and upsizing an existing vehicular access crossing (improved existing conditions regional storm floodplain);
- These improvements are to eliminate the floodplain spill along the south side of Lake Tillman;
- Site development will include fill encroachment into the Regional Storm floodplain, the proponent is recommending that the improved existing conditions regional storm floodplain be considered as the baseline condition when determining the compensating cut/excavation required to offset proposed AST2 fill encroachments;
- On-site opportunities for providing a compensating cut have been identified in the report;
- Discussed Authority concerns with proposed cut and fill plan, as generally cut and fill proposals are not permitted;
  - Therefore, Non-adherence to floodplain policy and proposal to provide all technical information and mitigation for cut and fill for review and decision by both Regulations Committee and potentially Board of Directors;
- NOVA explained that they are going to proceed with submitting an application to the Authority for review and want to know all detailed information Authority would require to adequately review the proposed cut and fill plan;
- Authority to send email correspondence to NOVA outlining information related to cut and fill proposal plan requirements for submitting a complete application to the Authority for the proposed NOVA 2020 Project, and proposed cut and fill plan;

December 11, 2013

- Authority staff forwarded complete application requirements, and met with proponent on December 18, 2013 to review comments;
- Authority staff satisfied with floodplain assessment, and proponent to submit a complete application for review;

January 21, 2014

- SCRCA staff undertook a telephone conference with NOVA;
- As per discussion the SCRCA understands that the subject project is not moving forward at this time (pursuing options in other regions of the world), and NOVA wishes to formally close the file to date with the SCRCA in a fashion that it can be picked up and moved forward from the current status in the future;
- NOVA thanked Authority staff for involvement in extensive pre-consultation meetings and review which was vital to keeping project on track for start of construction in late 2014 had NOVA moved forward with project at the Corunna Facilities.

**ST. CLAIR REGION CONSERVATION AUTHORITY REGULATIONS ACTIVITY REPORT- VIOLATIONS AND CORRECTIVE ACTIONS**

January 31, 2014

**TO: SCRCA Chair and Board of Directors**

**SUBJECT: Enforcement - Section 28 – Development, Interference of Wetlands and Alterations to Shorelines and Watercourses Regulation**

**FROM: Dallas Cundick, Environmental Planner/Regulations Officer**

File	Background
<p><b>FV # 201216</b></p> <p><b>2894 Old Lakeshore Road</b>                      Lot 4, Concession 9                      Geographic Township of Sarnia,                      County of Lambton</p> <p><b>Official Violation Notice Sent</b></p> <p>Notice of Violation Letter sent to agent (son of landowner) <b>September 27, 2012</b></p> <p>Notice of Violation Form sent to agent (son of landowner) <b>September 27, 2012</b></p> <p>Formal Letter outlining Authority Requirements sent March 13, 2013;</p>	<ul style="list-style-type: none"> <li>• Conducted site investigation October 4, 2012;</li> <li>• Unauthorized deck construction works along the Lake Huron Shoreline on the subject property had occurred in violation of Section 28 of the <i>Conservation Authorities Act</i>, as landowner did not apply or receive approval to carry out these works;</li> <li>• Authority staff met with the proponents on October 26, 2012 and outlined Authority’s role in hazard land management and reasons for concerns with deck structure;</li> <li>• Authority staff advised that deck must be removed, and discussed options for relocating to area of decreased risk;</li> <li>• Authority Staff contacted the City of Sarnia to determine ownership of land where the deck has been constructed;</li> <li>• Deck appears to be off the landowners property and on an area of land between the water’s edge and the subject property;</li> <li>• City of Sarnia to look into ownership of the land and determine if city owns the land in the location of the constructed deck;</li> <li>• Authority staff awaiting confirmation from City of Sarnia on landownership situation before proceeding accordingly;</li> <li>• City responded to the Authority that the Registry Office indicated any unpinned property belonged to the Crown, therefore it is not City property. While some maps may indicate the structure extends beyond the homeowners’ property, the only way to know for sure would be to have a surveyor go out there;</li> <li>• Authority staff to proceed with formal letter to the proponent outlining Authority requirements;</li> <li>• Proponent responded to the Authority March 27, 2013 via solicitor that they will be proceeding with an application for the works undertaken with modifications to meet SCRCA policy;</li> <li>• CA Staff met with Landowner and solicitor on Tuesday, May 21, 2013 on site to discuss;</li> <li>• Landowner was quite adamant that removing the structure is not an option for them;</li> <li>• Discussion was mostly on what investigations/reports/modifications/etc. needed to be completed to allow deck structure to remain somewhere on the property;</li> <li>• Following the meeting the solicitor responded formally with a written response to the Authority (received May 25, 2013), that they will be retaining the services of a qualified professional coastal engineer to review the works undertaken and complete a report on the dynamic beach, structure, coastal processes, impacts, and recommendation, etc.;</li> <li>• Follow up correspondence sent September 4, 2013 stating;</li> <li>• The Authority requires that you provide written correspondence to the Authority by October 6, 2013, indicating if you have indeed retained the services of Shoreplan Engineering, and the date at which you will be submitting an application for the works undertaken with modifications to meet SCRCA policy as per correspondence sent to you from the Authority dated March 13, 2013, including an assessment completed by a qualified professional engineer with experience in coastal processes (Shoreplan) ensuring that deck is not negatively impacting coastal processes (Deck must be located outside defined portions of the Dynamic Beach Hazard and design must minimize impact to dune area). Confirmation from Shoreplan Engineering that they are working on Shoreline Hazard Assessment should be submitted to the Authority with your correspondence.</li> <li>• The Authority requires that subject violation is resolved. If the Authority is not satisfied that adequate measures are being undertaken to submit an application for the works undertaken with modifications to meet SCRCA policy as outlined in</li> </ul>

<p><b>Deadline for Action</b></p> <p><b>Statute of Limitations</b> 2 years from date Authority made aware of violation;</p> <p>September 27, 2012 Authority sent notice of violation;</p> <p>September 27, 2014 statute of limitations expires;</p> <p><b>7 months and 7 days until Sept 27, 2014;</b></p>	<p>correspondence from the Authority to the proponent March 13, 2013, or the unauthorized deck construction is not removed from the property by October 6, 2013, the Authority will proceed with further legal action as specified under the <i>Conservation Authorities Act</i>.</p> <ul style="list-style-type: none"> <li>• Letter from solicitor received October 2, 2013;</li> <li>• Noted that Shoreplan Engineering visited the property and will be retained, they attached a letter they sent to Shoreplan stating this;</li> <li>• Letter stated that their still remains an issue with respect to the location of the important northerly boundary of the property which in the solicitors legal view would be approximately 10 ft. north of the bank;</li> <li>• They asked that the Authority allow them until the end of November to obtain and review the Shoreplan Engineering Report and to allow them to provide a legal opinion with respect to confirming the northerly limits to the property in question;</li> <li>• Shoreplan Engineer contacted the SCRCA in Late November to confirm he had been retained and that he would be working on Shoreline Assessment in December;</li> <li>• Staff from SCRCA sent Shoreplan background on file and the shoreline hazard information;</li> <li>• Jan 24, 2014, Staff of SCRCA emailed Shoreplan for update on shoreline assessment, no response from Shoreplan to date;</li> <li>• February 4, 2014 staff contacted solicitor of the landowner for status in respect to providing a legal opinion with respect to confirming the northerly limits to the property in question;</li> <li>• Solicitor to contact the landowner and see where they are at with Shoreplan review, and provide legal letter to SCRCA on this and property ownership issue;</li> <li>• Authority staff re-iterated that structure needs to be removed from the hazard (dynamic beach limit) and that the Authority requires that subject violation be resolved;</li> <li>• If the Authority is not satisfied that adequate measures are being undertaken to submit an application for the works undertaken with modifications to meet SCRCA policy as outlined in correspondence from the Authority to the proponent March 13, 2013, or the unauthorized deck construction is not removed to a location outside the dynamic beach hazard, the Authority will proceed with further legal action as specified under the <i>Conservation Authorities Act</i>.</li> </ul>
--	--

Recommended and approved by:

---

Dallas Cundick, Environmental Planner/Regulations Officer

---

Melissa Deisley, Regulations Officer

---

Patty Hayman, Director of Planning

**SCRCA Monthly Planning Activity Summary**      2013 November      14.(vi)

<b>File Ref.</b>	<b>Municipality</b>	<b>Geographic Twp.</b>	<b>Concession</b>	<b>Lot</b>	<b>Street</b>
FI 2013	ADELAIDE-METCALFE	ADELAIDE	CON 3 SER	LOT 26	SECOND STREET
FI 2013	BROOKE-ALVINSTON	BROOKE	CON 3	LOT 10	OIL SPRINGS LINE
GI 2013	CHATHAM-KENT	CHATHAM	CON 3 GORE	LOT A	
ZBA	CHATHAM-KENT	DOVER			VARIOUS
FI 2013	LAMBTON SHORES	PLYMPTON	CON FRONT	LOT 23	FERNE AVE.
FI 2013	LAMBTON SHORES	BROOKE	CON 9	LOT 18	HILLY ROAD
FI 2013	LAMBTON SHORES	SARNIA	CON 9	LOT 63	BEACH STREET
FI 2013	LAMBTON SHORES	BOSANQUET	CON 19	LOT 6	WEST PARKWAY DRIVE
FI 2013	LAMBTON SHORES	BROOKE	CON 9	LOT 18	HILLY ROAD
FI 2013	LAMBTON SHORES	EUPHEMIA	CON 6	LOT 21	DOWNIE ROAD
FI 2013	LAMBTON SHORES	MOORE	CON 12	LOT 26	LASALLE LINE
FI 2013	LAMBTON SHORES	BOSANQUET	CON 19	LOT 4	EAST PARKWAY DRIVE
FI 2013	LAMBTON SHORES	SARNIA	CON 9	LOT 67	BEACON COURT
FI 2013	LAMBTON SHORES	PLYMPTON	CON FRONT	LOT 23	FERNE AVE
SEV B5/2013	LAMBTON SHORES	BOSANQUET	CON 19	LOT 2	EAST PARKWAY DRIVE
FI 2013	MIDDLESEX CENTRE	LOBO	CON 9	LOT 12	NAIRN ROAD
SUB	PLYMPTON-WYOMING	PLYMPTON	CON 9	LOT 8	LAKESHORE ROAD
FI 2013	SARNIA	SARNIA	0	BLOCK	PLANK ROAD
OP	SARNIA	SARNIA	CON 1	LOT 1	
VAR A48/2013	SARNIA	SARNIA	CON 9	LOT 56	HANSARD LANE
FI 2013	STRATHROY-CARADOC	CARADOC	CON 10	LOT 10	CARROLL STREET WEST
FI 2013	STRATHROY-CARADOC	CARADOC	CON 10	LOT 10	CARROLL STREET WEST
GI 2013	STRATHROY-CARADOC	ADELAIDE	CON 2 SER	LOT 27	DOLPHIN ROAD
LL 2013	STRATHROY-CARADOC	ADELAIDE	CON 3 SER	LOT 23	THORNE LANE
SEV B16/13	STRATHROY-CARADOC	ADELAIDE	CON 4 SER	LOT 22	KITTRIDGE AVE
LL 2013	SW MIDDLESEX	EKFRID	CON 5	LOT 5	OLDE DRIVE

**SCRCA Monthly Planning Activity Summary**      2013 December

<b>File Ref.</b>	<b>Municipality</b>	<b>Geographic Twp.</b>	<b>Concession</b>	<b>Lot</b>	<b>Street</b>
FI 2013	CHATHAM-KENT	CHATHAM	CON 2 GORE	LOT 4	DUFFERIN AVE
LL 2013	CHATHAM-KENT	CAMDEN	CON 4 GORE	LOT 3	WEST STREET
SEV B104/13	CHATHAM-KENT	DOVER	CON 12	LOT 17	BAY LINE
SEV B106/13	CHATHAM-KENT	ZONE	CON 5	LOT 15	LAMBTON LINE
FI 2013	ENNISKILLEN	ENNISKILLEN	CON 2	LOT 17	RICHMOND STREET
FI 2013	LAMBTON SHORES	PLYMPTON	CON FRONT	LOT 39	LAKESHORE ROAD - A71
FI 2013	LAMBTON SHORES	PLYMPTON	CON FRONT	LOT 46	LAKESIDE STREET
FI 2013	LAMBTON SHORES	BOSANQUET	CON WEST	LOT 68	LAKESHORE ROAD
FI 2013	LAMBTON SHORES	BOSANQUET	CON WEST	LOT 77	CEDARVIEW DRIVE
FI 2013	LAMBTON SHORES	PLYMPTON	CON 6	LOT 19	HILLSBORO ROAD
FI 2013	MIDDLESEX CENTRE	LOBO	CON 8	LOT 7	ILDERTON ROAD
FI 2013	MIDDLESEX CENTRE	LOBO	CON 5	LOT 1	AMIENS ROAD

**File Reference Codes:**

CZ - Comprehensive Zoning  
 ZBA - Minor Zoning Bylaws and Amendments  
 OP(A) - Official Plan (Amendments)  
 TC - Tree Cutting

SEV - Severances  
 VAR - Variances  
 EA / PLEA - Environmental Assessment  
 SUB - Subdivision Plans

GI - General Inquiry  
 LL - Legal Letters  
 SP - Site Plan  
 DAR - Development Assessment Review

FI - Regulations (Fill) Inquiry  
 NM - Nutrient Management  
 PTTW - Permit to Take Water  
 SPA - Site Plan Amendments

FI 2013	MIDDLESEX CENTRE	LOBO	CON 9	LOT 8	QUAKER LANE
FI 2013	OIL SPRINGS	DAWN	CON 12	LOT 26	BENTPATH LINE
FI 2013	SARNIA	SARNIA	CON 9	LOT 64	BEACH LANE
FI 2013	SARNIA	SARNIA	CON 5	LOT 1	MANDAUMIN ROAD
VAR A44/2013	SARNIA	SARNIA	CON 8	LOT 7	JACKSON ROAD

## SCRCA Monthly Planning Activity Summary 2014 January

<b>File Ref.</b>	<b>Municipality</b>	<b>Geographic Twp.</b>	<b>Concession</b>	<b>Lot</b>	<b>Street</b>
LL 2014	BROOKE-ALVINSTON	BROOKE	CON 12	LOT 23	LA SALLE LINE
FI 2014	CHATHAM-KENT	CAMDEN	CON 5 GORE	LOT 4	SYDENHAM STREET
ZBA	DAWN-EUPHEMIA	EUPHEMIA	CON 11	LOT 22	CAMERON ROAD
FI 2014	ENNISKILLEN	ENNISKILLEN	CON 10	LOT 9	PETROLIA LINE
FI 2014	ENNISKILLEN	ENNISKILLEN	CON 9	LOT 11	ROKEBY LINE
FI 2014	LAMBTON SHORES	SARNIA	CON 9	LOT 5	STONE CREEK DRIVE
FI 2014	LAMBTON SHORES	PLYMPTON	CON 8	LOT 17	EGRERMONT ROAD
FI 2014	LAMBTON SHORES	PLYMPTON	CON FRONT	LOT 8	DEVONSHIRE ROAD
LL 2014	LAMBTON SHORES	BOSANQUET	FRONT	IPPER	WILLIAM STREET
OP	LAMBTON SHORES	BOSANQUET	FRONT	IPPER	
LL 2014	MIDDLESEX CENTRE	LOBO	CON 5	LOT 10	EGREMONT DRIVE
VAR A1/14	MIDDLESEX CENTRE	LOBO	CON 8	LOT 8	COLDSTREAM ROAD
FI 2014	PETROLIA	ENNISKILLEN	CON 10	LOT 13	LANCEY STREET
GI 2014	PETROLIA	ENNISKILLEN	CON 11	LOT 15	DISCOVERY LINE
GI 2014	PLYMPTON-WYOMING	PLYMPTON	CON 9	LOT 9	CAMLACHIE ROAD
LL 2014	PLYMPTON-WYOMING	PLYMPTON	CON 2	LOT 15	FRONT STREET
LL 2014	SARNIA	SARNIA	0	BLOCK	KIPLING STREET
VAR A1/2014	STRATHROY-CARADOC	CARADOC	CON 6	LOT 16	OLDE DRIVE
ZBA	STRATHROY-CARADOC	CARADOC	CON 4	LOT 20	CENTURY DRIVE
LL 2014	SW MIDDLESEX	MOSA	CON 8	LOT 10	SHIELDS SIDING ROAD

### Meetings

- Nov 4 – Town of Petrolia – Family Health Facility – D.C.
- Nov 5 – Great Lakes Water Levels Public Forum, Sarnia – C.L., D.S., B.M., G.S.
- Nov 6 – SCRCA office – Lions Club Bandshell – D.C., P.H.
- Nov 7-8 – Great Lakes Outreach and Communications Workshop, Toronto – C.L., D.S., J.Z.
- Nov 12 – Phone conference – Baird dynamic beach – P.H.
- Nov 12 – Binational Public Advisory Council Meeting , Port Huron – D.S.
- Nov 13 – SCRCA Phone Conference – NOVA 2020 – D.C.
- Nov 14 – WOCA GIS Meeting @ UTRCA – C.Durand
- Nov 19 – Regs Officer Meeting – Latornell – D.C., M.D.
- Nov 20 – Latornell – D.C., M.D.
- Nov 20 – Canadian Remedial Action Plan Implementation Committee Meeting, Wallaceburg – C.L., D.S.
- Nov 25/26 – Planning forum - PH
- Nov 28 – SCRCA Office – Jericho Wind – D.C.
- Nov 28 – Friends of the St. Clair River Annual General Meeting, Sarnia – C.L., D.S., E.C.
- Dec 3 – Aamjiwnaang First Nation Environment Committee Meeting – C.L., D.S.
- Dec 5 – Shell Liquid Natural Gas Open House, Sarnia – C.L., D.S.

### File Reference Codes:

CZ - Comprehensive Zoning  
ZBA - Minor Zoning Bylaws and Amendments  
OP(A) - Official Plan (Amendments)  
TC - Tree Cutting

SEV - Severances  
VAR - Variances  
EA / PLEA - Environmental Assessment  
SUB - Subdivision Plans

GI - General Inquiry  
LL - Legal Letters  
SP - Site Plan  
DAR - Development Assessment Review

FI - Regulations (Fill) Inquiry  
NM - Nutrient Management  
PTTW - Permit to Take Water  
SPA - Site Plan Amendments

Dec 10 – DFO Webinar-Fisheries Act – D.C., P.H., M.A., K.S., E.C., M.D.  
 Dec 12 – Walpole Island Heritage Center Christmas Open House – C.L., D.S.  
 Dec 16 – Walpole Island Heritage Committee Meeting – C.L.  
 Dec 18 – NOVA 2020 – Sarnia – D.C.  
 Dec 20 – Lions Club proposed bandshell @ S-C – PH  
 Dec 21 – Chatham-Kent Public Utilities Commission, Wallaceburg – C.L.  
 Jan 14 – Science and Monitoring Subcommittee Meeting, Strathroy – C.L., D.S.  
 Jan 14 – Binational Public Advisory Council Meeting, Sarnia – C.L., D.S.  
 Jan 21 - NOVA 202- -Phone Conference – D.C.  
 Jan 22 – Plympton-Wyoming Staff and SCRCA (Shoreline Structures) – D.C., P.H., M.D.  
 Jan 24 – EIS Discussion -Beach Street - SCRCA Office – D.C.  
 Jan 28 – Regulations Committee Meeting – D.C., P.H., M.D., B.M., G.S.,  
 Jan 29 – Walpole Island First Nation Delisting Criteria Workshop – C.L.  
 Jan 30 – Canadian Remedial Action Plan Implementation Committee Meeting, Aamjiwnaang First Nation – C.L., D.S.

**File Reference Codes:**

CZ - Comprehensive Zoning  
 ZBA - Minor Zoning Bylaws and Amendments  
 OP(A) - Official Plan (Amendments)  
 TC - Tree Cutting

SEV - Severances  
 VAR - Variances  
 EA / PLEA - Environmental Assessment  
 SUB - Subdivision Plans

GI - General Inquiry  
 LL - Legal Letters  
 SP - Site Plan  
 DAR - Development Assessment Review

FI – Regulations (Fill) Inquiry  
 NM - Nutrient Management  
 PTTW- Permit to Take Water  
 SPA – Site Plan Amendments



# 2014 Special Events

14.(vii)

A.W. Campbell Maple Syrup Festival, March 15 - 16, 9:00 - 4:30  
A.W. Campbell Conservation Area

Sydenham River Canoe Race, April 13, Registration 10:00 - 11:00 (Mossie Line at the Sydenham River) Race ends at the Shetland Conservation Area

Strathroy Water Trail Paddle Day, May 24, 9:00 - 3:00,  
Centennial Park, Strathroy

Denning Bros. Funeral Home Memorial Forest Dedication, May 25, 2:00  
Centennial Park, Strathroy

Member's Project Tour, June 26

McKenzie and Blundy Memorial Forest Dedication, September 21, 2:00  
Wawanosh Wetlands Conservation Area

Foundation Memorial Forest Dedication, September 28, 2:00  
Lorne C. Henderson Conservation Area

Geocaching Event, September 21, 9:00 am Lorne C. Henderson  
Conservation Area

For details on events visit  
[www.scrca.on.ca](http://www.scrca.on.ca) and click on events



To: Board of Directors  
Date: February 6, 2014  
From: Claude Lafrance, Remedial Action Plan (RAP) Coordinator  
Donna Strang, Remedial Action Plan (RAP) Research Assistant  
Subject: St. Clair River Area of Concern (AOC)

---

## **Sediment Management Options (SMO) Project:**

The Sediment Management Options (SMO) project for the St. Clair River Area of Concern (AOC) continues to move toward finalization. The final SMO report prepared by ENVIRON consulting has been completed and received by the SCRCA. It was provided to the Ontario Ministry of the Environment (MOE), the Federal Department of the Environment (EC) and the local Sediment Technical Team.

The recommendations of the local Technical Team have also been forwarded to the government agencies. The Technical Team recommended that all three areas of interest be cleaned up by hydraulic dredging followed by a thin layer of sandy backfill. The executive committees of MOE and EC are reportedly actively considering the recommendations.

A statement of works for the detailed engineering design phase of the project is being developed. This document will be used to support the acquisition of consulting engineering services to complete the design of the remedial measures. The MOE is considering taking over the project management of the next phases of the clean-up project.

## **Progress towards delisting**

Donna Strang prepared an assessment report on the restrictions on dredging activities impairment in the St. Clair River. The report reviewed sediment quality information for dredging projects undertaken over the past 10 years. Dredging was done at the Southeast Bend Cut-off channel, Stokes Point Shoal, Sarnia Harbour and Mitchell's Bay Marine Park. Chemical analysis results for 101 samples, each analysed for over 50 different chemicals were evaluated against federal and provincial criteria. A review of past uses of the dredged material was also conducted. Based on the results of this assessment it was concluded that the impairment has been resolved. The Canadian RAP Implementation Committee (CRIC) was presented with the evaluation and agreed with the conclusions of the report. The next step to declare this issue resolved is to undertake First Nations and public consultation on the report. This will begin within the next few months.

## Bald Eagles at Stag Island

Over the last few weeks a large number of Bald Eagles (*Haliaeetus leucocephalus*) have been observed on Stag Island in the St. Clair River. Reportedly, upwards of over 20 eagles have been recorded sitting in trees or flying over the ice-free areas of the river. Historically, Stag Island was an important migration and feeding location for the eagles, however due to the past use of the now banned DDT (dichlorodiphenyltrichloroethane) pesticide, their populations severely declined. They are currently listed as a species of special concern under the Ontario Endangered Species Act. The presence of so many Bald Eagles this winter has captured the attention of local birders and First Nations. Their rebound in the area is just one of the positive outcomes from the work conducted along the St. Clair River and elsewhere to reduce pollution and enhance wildlife habitat.

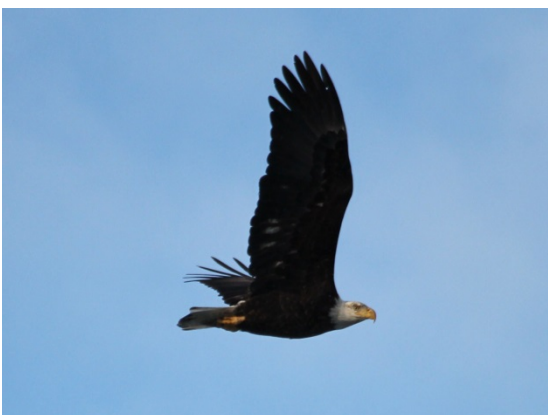
The following pictures were provided by Greg Plain of Aamjiwnaang First Nation and Sharon Nethercott, SCRCA Conservation Education Coordinator. Many of these pictures were taken of the north end of Stag Island from Guthrie Park on the St. Clair Parkway, just north of Corunna.



Source: Greg Plain, Aamjiwnaang First Nation, 2014



Source: Greg Plain, Aamjiwnaang First Nation, 2014



Source: Sharon Nethercott, 2014



Source: Sharon Nethercott, 2014

**2014 Authority Destruction List****14.(ix)**

<b>Dates</b>	<b>Description</b>
2000	Account Payables
2004	Account Payables
2002	Account Payables
2003	Account Payables
2003	Invoices A/R
2004	Invoices A/R
2004	Invoices A/R
2001	Invoices
2003	Invoices A/R
1973	Invoices
1972	Travel Expenses
1971	Invoices
1971	Cheques
1996	Account Receivable
1996	Payroll Journals
2003	Meeting Package
2003	Accounts Payable Journals
2003	Workers comp. Budget
2003	Timesheets
2003	Applications
2003	Cash receipts
2003	Bank statements
1994	Account Payables
1995	Account Payables
1997	Camping Deposit
1998	Camping Deposit
1997	Cash receipts
1998	Cash receipts
1997	Accounts Receivable
1998	Accounts Receivable
1997	Journals
1998	Journals
1988-1990	Farm Leases
1988-1990	Misc. Documents
2001	Cash receipts
1999	Annual Report
2001	Intrum Financial Statement
2001	Timesheets
2001	Sarnia Bay Misc. Documents
1976	Equipment list
1997-2008	Working Papers
2004	Timesheets
2004	Account Receivable
2004	Bank Records

**2014 Authority Destruction List****14.(ix)**

<b>Dates</b>	<b>Description</b>
2004	Bank Monthly Statement
2000	Insurance Policy
2000	Depoist Books
2000	Cash receipts
2000	Mid Financial Statement
2000	Cheques receipts
1996	Tansaction Batches
1996	Vehicle and Equipment
1995	Tansaction Batches
2002	Accounts Receivable
2002	Account Payables
2002	Cash receipts
2002	Audit proposal
2002	Mid-year Financial reports
1998	Accounts Receivable
1989	Receipts
1991	Accounts Payable Journals

# Staff Report

14.(x)



To: Board of Directors  
Date: February 13, 2014  
From: Kevan Baker, Director of Lands  
Subject: Warwick Conservation Area Access

---

## Project Background:

- the Conservation Authority owns and operates the Warwick Conservation Area in the Township of Warwick
- the conservation area has over 200 campsites and is a busy camping destination between May and October.
- the main access roadway is currently owned by Warwick Township, St. Clair Conservation and a private individual
- this roadway is critical to the operation of the campground as it must safely facilitate large recreational and emergency vehicles.
- in late fall of 2011 a section of the roadway was eroded by high water levels on the adjacent Bear Creek.
- the resulting bank slump was caused by the stream undercutting the existing bank reducing the road to one lane
- the current roadway condition exposes each ownership party to a greater liability risk
- Shoreline Engineers were contracted to access the damage and prepare a design to repair the eroded area; estimated cost to repair was approximately \$ 35,000.00
- to ensure that the erosion protection was completed properly a portion of the work would be required within the watercourse.
- an application and design was submitted for approval to DFO but was rejected due to the in-water works component of the project (rare mussels have been identified in the immediate water shed area and no in-water works was permitted)
- to protect the stream bank without in-water works, would require a wider work area so to permit for more gradual sloping of the erosion protection
- this would require a portion of the existing roadway to be completed and would result in the remaining roadway being too narrow to accommodate regular traffic.



### Committee Summary:

- we have met with Municipal staff and the adjacent landowner a number of times over the past year and have discussed the options to ensure an Authority owned and long term reliable entrance to the conservation area
- from these meetings and from review of all the information, it has been recommend to relocate the roadway by securing land from the municipality and the adjacent landowner
- the municipality has agreed to lead in the land



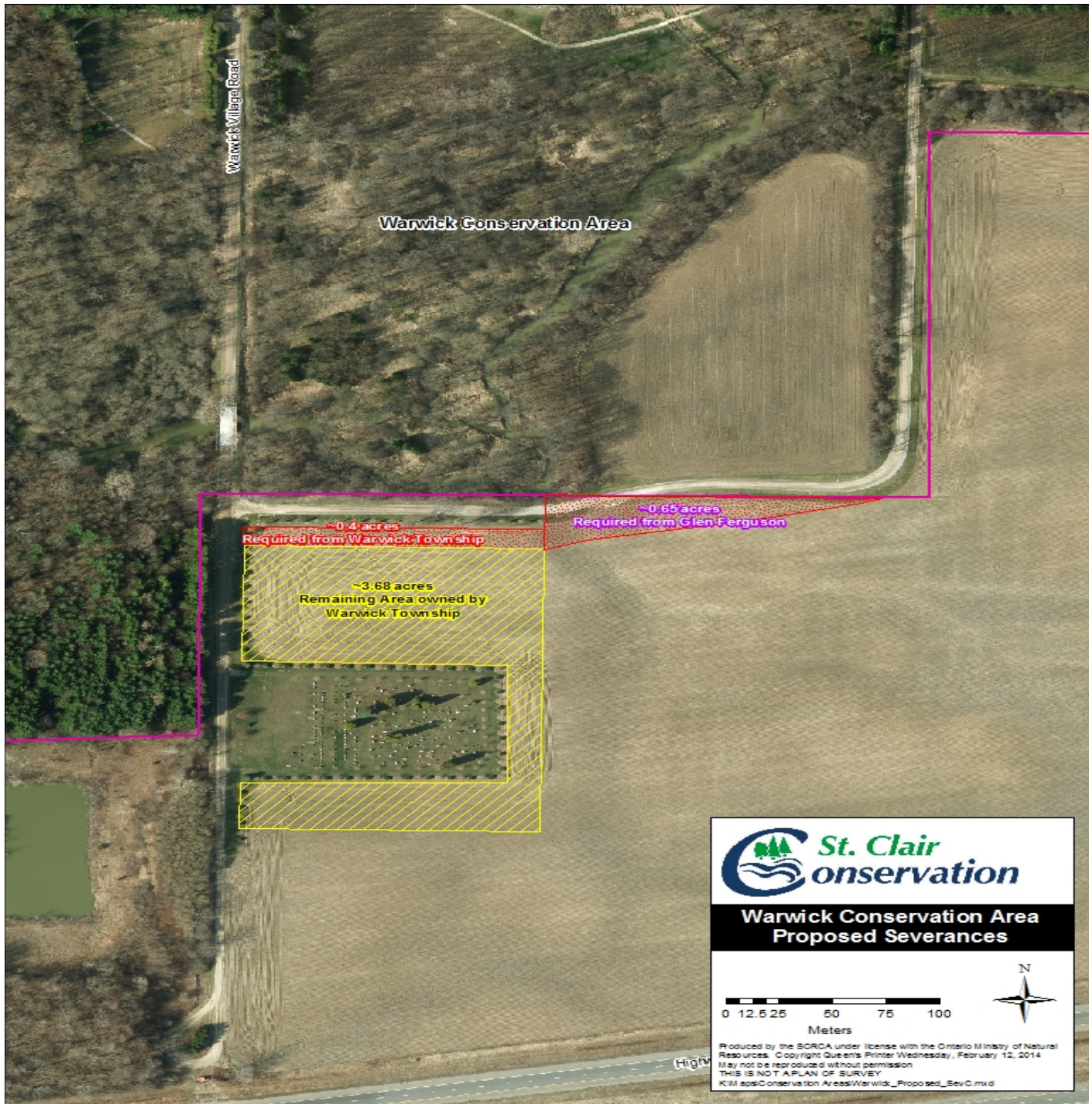
seurement portion of the project, but has asked if the Conservation Authority is willing to commit to the costs associated with the purchase, transfer and construction of the roadway.

### Project Cost:

- project cost to complete will consist of survey, legal, engineering and road construction, land seurement and stream bank erosion repair.
- cost estimates range between \$ 95,000.00 & \$ 110,000.00
- this project has been proposed in our capital budget for 2014, with approximately \$75,000.00 budgeted
- any overages to the above amount would be covered through conservation area profits or by the reserve account

### Motion:

That the Board of Directors acknowledges the report on the Warwick Conservation Area and approves costs associated with land seurement, legal fees and road construction.



**St. Clair Conservation**

**Warwick Conservation Area  
Proposed Severances**

0 12.5 25 50 75 100  
Meters

Produced by the SORCA under license with the Ontario Ministry of Natural Resources. Copyright Queen's Printer Wednesday, February 12, 2014  
May not be reproduced without permission  
THIS IS NOT A PLAN OF SURVEY  
K:\M\apps\Conservation Areas\Warwick\_Proposed\_Sev C.mxd



**FLOODING:** Conservation Authority advises of danger associated for rising water levels

# Water levels being mon

## OBSERVER STAFF

St. Clair Region Conservation Authority officials say they're keeping watch on water levels in local rivers and streams as rain moves through the region, and warm temperatures melt snow and ice.

Girish Sankar, the authority's water resources engineer, issued a notice Friday urging residents in the region that includes Sarnia-Lambton to avoid watercourses and flooded areas, due to slippery banks, cold and swift moving water and deteriorating ice.

Parents, in particular, are being urged to keep children away from those areas.

The statement said levels on the Sydenham River and its tributaries were normal Friday but two significant weather systems are forecast to bring 20 to 40 mm of rain to the region. That, coupled with the melting snow, is expected to increase water levels across the watershed in the coming days.

The authority is asking municipal and emergency response staff in the region to also monitor local flood conditions closely.



Officials with the St. Clair Region Conservation Authority are advising of the potential for high water and melting snow. Residents are being advised to keep clear from fact moving water.

# Flooding tops weather stories in 2013, Environment Canada says

Kate Schwass-Bueckert  
QMI Agency



David Phillips,  
Environment  
Canada

From the massive super flood in southern Alberta to the torrent of rain that hit Toronto, flooding was responsible for the biggest weather stories of the year, Environment Canada meteorologist David Phillips says.

Four of the top 10 stories on Phillips' list involved flooding or the lack of it.

Alberta's "flood of floods" was the No. 1 story in 2013. In a news conference on Dec. 19, Phillips said a lot of snow cover and a wet May didn't help when a "water bomb" went off on June 20. He said the storm was "like a fire hose," with 15-22 mm of rain falling in some areas in one hour. The Burnt Creek, Alta., weather station recorded 345 mm of rain in two days during the storm that killed four and affected thousands.

That storm was a lot of bad luck — it hit the most-built-up area of the city during rush hour, becoming the most expensive weather disaster in Toronto's history.

Spring flooding in Ontario's cottage country was the No. 7 story and "was one of the big surprises this year," Phillips said. The lack of massive flooding in the Prairies, even though people were bracing for it, was his fourth story of the year. Phillips said a longer than normal winter, combined with a slow melt, helped combat flooding in most areas.

The two thunderstorms that joined forces to target Toronto on July 8 was Phillips' No. 2 story. That

## The list:

### 10 - Sunny and rainless in B.C.

"British Columbians were enjoying long stretches of near-perfect weather," Phillips said. "It was almost delightfully boring," July was the sunniest month ever, but within minutes of the month ending, it started to rain.

### 9 - Stormy seas and a Maritime tragedy

There were back-to-back-to-back storms in February. The storm on Feb. 17 wasn't the most powerful, but it was the most tragic because five people died.

### 8 - Prairie winter that went on forever

"The snows came early, they stayed late, and didn't disappear in the middle," Phillips said. Perhaps the cruellest day of all was the first day of spring, when there was still a record amount of snow on the ground. Regina had more than 200 cm of snow in winter, the largest amount since 1883.

### 7 - Spring flooding in Ontario's cottage country

"It was one of the big surprises this year," Phillips said of mid-April rains. There is always some spring flooding, but in this case, thousands were forced to leave, eight regions declared states of

emergency, and there was millions of dollars in damage.

### 6 - Wicked winter weather wallops the East

In early February a 10-day storm moved from Ontario to the U.K., but it really hit the Maritimes hard and the "nasty nor-easter" dumped a huge amount of snow on the region.

### 5 - A rebound of sorts in Great Lakes and Arctic

The Arctic was cooler this summer and the ice didn't melt as much. In the Great Lakes, a wet spring, summer and fall resulted in all the lakes having more water in them than they did at the start of the year. "It could be a one-off," Phillips warned. "One year does not a trend make."

### 4 - To flood or not to flood in the Prairies

Slow melting of snow in the Prairies meant massive flooding didn't happen this spring. "There was a flood, but it was more manageable," he said.

### 3. Bumper crops in the West, so-so in the rest

"The growing season wasn't perfect, but it was pretty darn close," Phillips said. "You couldn't manufacture a better summer." Farmers in the West got rain when needed, no storms, perfect

harvesting weather, record crops, record yield — and ran out of places to put the crop. The rest of the country had more challenges due to a wet growing season, but did experience some "pretty good finishing-up weather."

### 2. Toronto's torrent

"I'm not talking about City Hall," Phillips joked, referring to Toronto Mayor Rob Ford's ongoing crack scandal. July 8 saw heavy rains from two lines of thunderstorms hit the city. "It was like Toronto was the bull's-eye." The storm was a lot of bad luck: the ground was already saturated because of rain the day before, it hit the most built-up area of the city, and came right at rush hour.

### 1. Alberta's Flood of Floods

Phillips said this story as the top choice shouldn't be a surprise. "What took nature millions of years to lay down was destroyed" within hours, Phillips said of this "super flood" that went into the heart of Calgary and hit southern Alberta. The storm was "like a fire hose" and drenched the region, 15-20 mm in an hour in some areas, 345 mm in two days at the Burnt Creek weather station. Four people died, and thousands are still dealing with damage to their homes and businesses.

## Senate scandal: PM felt 'betrayed'

QMI Agency

Prime Minister Stephen Harper said despite feeling betrayed by some of his associates, he has no intention of stepping down before the 2015 election.

In a year-end interview with QMI Agency's French-language station TVA, the PM said reaching a free-trade agreement with the European Union was a highlight of the past year, and the Lac-Mégantic tragedy was Canada's darkest hour.

But the Senate scandal affected him personally.

"I felt betrayed, disappointed, angry... Yes, all these emotions. And much more," Harper said, as translated from the French.

Nigel Wright, who until the spring was Harper's chief of staff, is now under investigation by the RCMP for fraud and breach of trust.

Harper said in September that Wright was "fired" but in May, in a statement, he said he'd accepted Wright's "resignation" with great regret.

Which was it?

"I decided that Mr. Wright was not going to work for me," he said in the interview.

The Mounties are also investigating four senators — three of them Conservative — over alleged improper housing claims totalling about \$500,000. Mike Duffy, Pamela Wallin and Patrick Brazeau been benched without pay for the remainder of the session.

Still, the Prime Minister said he is not in favour of abolishing the Senate.

About Canada Post, which last week announced it would end door-to-door mail delivery in cities over the next five years, Harper said he did not see a problem with community mailboxes.

"Many neighbourhoods already have such services," he said. "This is the case in my neighbourhood in Calgary. It's not a problem for people."

And he showed confidence for his political future, saying he intends to lead the Conservative Party in the next election.

## Sessions to help smokers quit

Sarnia This Week

free 1-800-387-2882 after Jan. 6.

Nicotine replacement therapy has been shown to effectively help people quit smoking by easing withdrawal symptoms. Workshop participants also receive educational material with quit smoking and relapse prevention strategies, along with information to address other unhealthy lifestyle factors that are known to accompany smoking.

The STOP Program, introduced in 2005, is led by the Centre for Addiction and Mental Health (CAMH), and funded by the Ontario Ministry of Health and Long-Term Care as part of

its Smoke-Free Ontario Strategy.

It has provided smoking cessation medication, free of charge, along with behavioural support to 90,000 Ontarians.

Questionnaires administered pre- and post-treatment help STOP Program researchers learn more about the long-term impact of providing free nicotine replacement therapy and other smoking cessation aids to smokers across Ontario.

To date, STOP participants have shown an improvement of at least two times the typical quit rates.

**BOASE**  
DESIGN

FULL HOME RENOVATIONS

Kitchens | Baths  
| Structural and Cosmetic Renovations  
| Finish Carpentry | Basements | Decks

T: (519) 330-7532  
E: INFO@BOASEDESIGN.COM  
WEB: WWW.BOASEDESIGN.COM

**Get Mitten Knittin'!**

Upcoming workshops for basic mittens to Estonian Gloves and everything in between!

STOP BY OR CONTACT US FOR MORE INFO

Heaven is Handmade  
A Yarn Boutique

250 N. Christina • 519-481-YARN (9276)

**Eitanty** Sarnia Dental  
shaping the smiles of tomorrow

Improve your smile and stabilize your dentures with the help of dental implants.

Call today to book your consultation

230 Vidal St. North (519) 336-1270

■ SAFETY: Local groups awaiting provincial funding to carry out shoreline protection work

# Waterfront walkway to be closed

**BARBARA SIMPSON**  
The Observer

As Sarnia-Lambton braces for another blast of Arctic air, local water officials are shutting down a stretch of walkway near the Blue Water Bridge due to safety concerns.

The stretch of asphalt path - from the public washrooms east of the bridge around to the parking lot north of the Lambton Area Water Supply System building - will be closed until the spring, confirmed LAWSS manager Susan MacFarlane.

LAWSS board members made the decision in part because the shoreline protection rocks along the river's edge - a popular place for people to climb onto - have been shifting.

"We may put up signs encouraging people to stay on the pathway, but for now, given the cold weather, the ice, it was proactive to shut it down this year," MacFarlane said.

LAWSS and the St. Clair Region Conservation Authority have developed a plan for shoreline protection work, including adjusting the rocks to fix any gaps between them.

However, the St. Clair Region Conservation Authority is waiting to reapply again for provincial dollars to fund

“  
We may put up signs encouraging people to stay on the pathway, but for now ... it was proactive to shut it down this year.”

Susan MacFarlane

half of the \$500,000 worth of work.

"LAWSS is ready," MacFarlane said. "We have it in our budget to pay for half of the work and we're just waiting for the funding, so if we get the funding this year, then we'll proceed with the work this year."

barbara.simpson@sunmedia.ca

**BARBARA SIMPSON / THE OBSERVER**  
A stretch of asphalt walkway east of the Blue Water Bridge, pictured here Monday, will be closed off to the public due to safety concerns.



**IN BRIEF**

**Cold weather alert**

Lambton's Medical Officer of Health issued a Cold Weather Alert for Lambton County Monday, as the temperature was expected to drop overnight to -16 C before the windchill effect.

The alert will remain in effect until Friday.

Residents are advised to take precautions by dressing in layers, shielding exposed areas from the wind such as head, neck and face, and limiting time spent outdoors.

Lambton Public Health advises local agencies that provide shelter and

■ EDUCATION: Popular occasional teacher was loved by faculty and students

## Teaching was a passion for Kloostra

**ELLWOOD SHREVE**  
QMI Agency

Paul Edward Kloostra's last day was spent doing what he truly loved - teaching.

The long-time occasional teacher with the Lambton Kent District School Board died suddenly of medical condition on Friday while working at John McGregor Secondary School in Chatham.

Kloostra worked at schools across the board, including those in Chatham, Sarnia, Wallaceburg and Dresden.

McGregor principal Mark Sherman said, "it's one of those sudden and irreplaceable losses."

a lot of different subject areas as an occasional teacher at McGregor.

The director said the emergency response to Kloostra's medical condition was very quick.

Sherman, as well as a teacher and student all administered CPR and first aid to try to resuscitate Kloostra, he added.

"They did a commendable job," Costello said.

"Everything that could have been done, I believe was done. It's a credit to the students and staff of John McGregor that they acted so promptly," he added.

Sherman said Kloostra left a successful

**SNOW PLOWING**

24 hour dispatch  
Commercial  
Ice control products

Please call today for a free quote 20 years experience

**BORE**  
Fence Solutions Ltd.

519-542-5291

## Harsh weather on the rise, insurance rates follow

By Kimberly Powell-McConaghy

With no end in sight to Canada's severe weather trend, homeowners should prepare for a potential rise in property insurance premiums.

Pete Karageorgos, manager of consumer and industry relations at the Insurance Bureau of Canada, told The Canadian Press that storms occurring with greater regularity present a higher volume of claims averaging approximately \$1 billion over the last three years or so. Some of the country's largest insurers have raised

premiums by 15 to 20 per cent over the past few months as catastrophic losses and weather-related claims have risen.

Michael MacDermid, financial advisor and owner of MacDermid & Associates, The Co-operators in Forest, says there were more than 10,000 weather-related claims in 2013 estimated at more than \$200 million for the company.

"Weather-related losses have grown higher than ever and records have been broken over the past several years," says MacDermid. "It looks like we, and the industry, will pay out more than

ever before for these claims once again in 2013."

Massive flooding in Southern Alberta last June has gone down in history as the most costly natural disaster in the country with an estimated \$1.9 billion hit to the insurance industry, \$78 million for The Co-operators collection of companies. July's one-day torrential rainfall in the Greater Toronto Area saw an estimated \$850 million for the industry and \$49 million for The Co-operators and the estimated cost of the most recent ice storm that wreaked havoc on Toronto and other parts of Ontario is

estimated to cost insurers between \$400 and \$600 million.

"Water losses have passed fire losses as the biggest expenses for property insurers in the past five to seven years or so," says MacDermid. "Most of the flood-related claims for sewer back-up damage and overall water losses, including snow and hail, have been growing at a rapid pace."

The insurer has introduced an incentive for clients who

help prevent water losses by installing things such as back-up sump pumps, check valves and water monitoring devices. The company also takes local municipal infrastructure updates into consideration when determining rates for home, farm and commercial insurance.

As far as premium increases, The Co-operators is able to segment risks based on water zones, meaning areas more prone to water losses pay higher premiums and,

because it is a national Canadian-only company, the losses are spread out, which helps absorb them. "At this time we have no planned local rate increases, but rates out west will likely be increasing substantially," says MacDermid.

It's been a bad few years for insurers and these types of weather-related disasters are becoming less and less rare.

■ **WEATHER:** Conservation authority staff watching waterways for signs of flooding

# Big melt coming this weekend

**PAUL MORDEN**  
The Observer

The St. Clair Region Conservation Authority is warning residents to stay away from rivers, creeks and floodplains this weekend as a January thaw is expected to melt ice and snow across the watershed.

The temperature is forecast to reach a high of 8 C Saturday in Sarnia, and 10 to 20 mm of rain could fall, adding to the melting snow and ice, said Girish Sankar, water resources engineer with the authority.



**That could potentially give (some people) a false sense of security ... considering how close you are to the lake and the St. Clair River, you have to be really cautious about the thickness."**

Girish Sankar

Sankar said the existing snowpack holds the equivalent of another 70 mm of precipitation in the northern portions of the watershed stretching to just east of Strathroy, and 50 mm in the southern portions near Wallaceburg.

"There could be flooding in certain low-lying areas in the watershed," he said, adding by Sunday it is expected that 75% of the snowpack would be melted.

That snow and ice melt, combined with the rain, is expected to push water levels in the Sydenham River to the top of its banks, and could overflow smaller watercourses in upstream areas.

In a bulletin issued Friday, the authority recommends municipal emergency response staff, and road superintendents, monitor local conditions closely over the weekend.



DAVID GOUGH/QMI AGENCY

Steve Clark, a water resources technician with the St. Clair Conservation Authority, test the strength of the ice on the Sydenham River, by throwing a 30 kilogram off of the Lou Stonehouse Bridge on Friday. The conservation authority was keeping a close eye on the ice, as rain was called for Friday night and this weekend.

Dresden and Wallaceburg are two areas in the region officials watch closely for signs of flooding in these instances, Sankar said.

As well as the risk of flooding, officials are urging residents to take care around watercourses that are expected to pose a danger because of deteriorating ice, fast-moving water and slippery banks.

Recent cold temperatures have left 10 to 15 cm of ice on the Sydenham River, Sankar said.

"That could potentially give (some people) a false sense of security ... considering how close you are to the lake and the St. Clair River, you have to be really cautious about the thickness," he said.

"It will start deteriorating over the weekend, so we request people stay away."

Parents are also being urged to keep children away from floodplain areas.

Meanwhile the rising mercury could be a double-edged sword for coast guard icebreakers, said Andy Maillet, operations superintendent with the Canadian Coast Guard.

While there's less ice on the St. Clair River, partially melted shards could cause more compression where the river meets frozen Lake St. Clair, he said.

"That may give us even more difficulty later on."

Ice started flowing into the river a little more than a week ago and, coupled with the cold snap, icebreakers from both sides of the border have been busy breaking through the ice for ships making their last voyages before the Sault Ste. Marie locks close Jan. 15.

"We have a large amount of traffic to move in a short amount of time," Maillet said.

An ice bridge has formed north of the Blue Water Bridge, he said, which is blocking more ice from entering the river, for now.

"But this last cold snap has almost filled southern Lake Huron with ice," he said.

If winds shift to the north, it could mean an even greater deluge of ice into the river, he said.

With files from QMI Agency

paul.morden@sunmedia.ca

# Chatham This Week

## Ash borer well adapted to survive extreme cold

Wed Jan 15 2014

Page: 2

Section: News

Byline: DAVID PATTENAUDE, QMI AGENCY

Contrary to a news report last week that extreme cold in southern Ontario might be good for ash trees and bad

for the emerald ash borer (EAB), the insect does quite well in very cold weather.

Robert Venette, a biologist with the U.S. department of agriculture forest service, said in the report the invasive bug that usually goes dormant in the winter starts to die at about -29 degrees Celsius. Once the temperature hits -34 degrees Celsius, 90% of the larvae will die, he said.

According to Tim Payne, forest management specialist with the St. Clair Region Conservation Authority, "...there may be an impact on the EAB because of the cold but minimal. It needs to drop to -30 degrees Celsius or lower to have an approximate 50% mortality rate."

Last week in Chatham-Kent, the record low was -25 degrees Celsius.

Taylor Scarr, a provincial forest entomologist with the Natural Resources Ministry, said "The cold winter temperatures experienced so far in Ontario in the range of the EAB will have a minimal impact on larval survival. The temperatures are not cold enough to cause significant mortality."

There are several reasons for this, said Scarr.

Research shows that at -30 degrees Celsius, only half the larvae die. The other half survives.

The temperature under insulating tree bark where larvae is is usually a few degrees warmer than outside air. The sheltering bark protects the EAB from windchill and snow packed around the tree provides insulation as well. Any larvae beneath the snowline are protected from the cold.

The EAB develops a cold tolerance and Scarr said bark insulation slows down the rate at which temperatures drop.

"This gives the insect time during the day to adapt to the cold," Scarr said.

The EAB is doing well in the Moscow region of Russia and it's much colder there than in Ontario.

"If the insect can thrive in Moscow winters, it can tolerate what it will encounter in most of Ontario," said Scarr.

The EAB is most cold-tolerant in January and February and Scarr said "Had the cold weather we experienced in January occurred in October or November, it might have caused more mortality because the insect wouldn't have had time to adapt to the cold.

"Progressively cold weather allows the

insect to acclimatize to resist the cold by producing its own internal anti-freeze (glycogens and sugars that lower the freezing point of liquid water inside the insect.)" In Chatham-Kent, a substantial number of ash trees have succumbed to the EAB.

"Smaller diameters of ash trees have eluded the EAB compared to large diameter ones and there are still ash trees alive in the small diameters. You could have large ash trees all dead in a woodlot, 50% in the smaller diameters, and none of the seedlings infested," said Payne. The EAB regulated area in Ontario has been extended to encompass several counties. Ash trees may be moved within the boundary of the regulated area, which includes all the areas within the boundaries of the Cities of Hamilton and Toronto, the Regional Municipalities of Chatham-Kent, Durham, York, Peel, Halton, Niagara and Waterloo and the counties of Brant, Bruce, Elgin, Essex, Haldimand, Huron, Lambton, Middlesex, Norfolk, Oxford, Perth and Wellington.

In Ontario, the EAB was first detected in Windsor in 2002.

# Courier Press

## More work needed on Stag Island phrag

Thu Feb 6 2014

Page: 13

Section: News

Byline: HEATHER BROUWER, QMI AGENCY

Stag Island officials will have to wait to find out whether they will receive municipal help in ridding the island of the phragmites australis.

Phragmites is an invasive perennial grass that's damaging wetlands and beaches across the province.

The plants have made their way onto the 100 acres of 'provincial significant wetland' on Stag Island, and the island's Fraternal Fellowship Association is worried about their impact on habitat for other plants and animals. Left unchecked, phragmites can grow to more than 20 feet tall and produce up to 200 stems per square metre. They grow so densely that they crowd out other species, and they're so solid that they can puncture rubber boots and tires when cut.

"We also believe that a property and safety risk exists in having this extensive marsh taken over by 14-foot tall dead dry grasses, as it will be a fire risk to some cottages that are very close to the marsh," wrote Rene Field, a member of the Stag Island Environmental Committee, in a letter to St. Clair Township council.

With the help of funding from the St. Clair Region Conservation Authority and Friends of the St. Clair River, the first step in eliminating the grass was completed in the fall.

"The first phase has been completed, at a

cost of \$12,430," wrote Field, explaining that the tall stand of phragmites was flattened with a roller.

But the work is far from over.

"The next phase is difficult and expensive and involves herbicide application to the spring regrowth before it gets too tall again."

The cost for the work is estimated to be at least \$25,000.

In her letter to council, Field said the group is requesting that council contribute \$10,000 toward the project, which, if successful, could lead to more restoration work on the island.

"This large coastal wetland could be restored to the point where it again has a big impact on the biodiversity of Lambton County and St. Clair Township," she wrote.

Council opted to defer the discussion to its March budget meeting.



# Lambton, Chatham-Kent have natural gems

**Heather Brouwer**  
Sarnia This Week

Deer, beaver, birds and butterflies were among the topics discussed at the most recent installment of the Sombra Speaker Series.

Denise Shephard, president of the Sydenham Field Naturalists, was on hand at the January gathering to discuss some of activities and programs in which her group is involved.

And while the organization is considered Chatham-Kent's naturalist club, there are a number of members from Lambton, and the group also operates in south Lambton and has outings as far north as Sarnia, she said.

In fact, Shephard herself has helped with restoration efforts in Canatara Park on a SFN outing.

"When I go there, I can say, 'I did that. I planted that.' And you really feel like you did something good."

Part of Shephard's presentation focused on a few of the natural areas in Lambton County.

Bickford Oak Woods, for

example, is a 760-acre woodlot that is home to oak trees, herons, beavers, white tailed deer, and a number of bird species.

"It's one of the largest continuous areas of Carolinian Forest that remains," she said.

She also praised the Reid Wetlands, which was home to the only spotting of a particular rare butterfly in Canada.

"It has such biodiversity," she said.

Meanwhile, she also described the "three corners of Wallaceburg" - Peers Wetland, Paw Paw Woods, and Sycamore Woods Nature Preserve - three SFN conservation efforts that have taken place within the group's home community.

Shephard invited everyone to check out those outdoor areas, the group's indoor and outdoor programs, and also the annual banquet, which this year will feature Ann and Rob Simpson, of Wild About Nature.

For more information about the group and its activities, visit sydenhamfieldnaturalists.ca.



## Visiting The Farmers' Market

**David Pattenau/Sarnia This Week**

Specializing in award-winning Ontario maple syrup, fresh produce, local honey products, spices and herbs, organic apple products and more, Kapple's Korner is one of the vendors at the Sarnia Farmers' Market. The Proctor Street market is open year-round on Wednesdays and Saturdays and at the corner vendor's station on Jan. 29 are Mark VanderHoek, left, and vendor Frank Kap.

# Record number of tissue donors in Ontario in 2013

Sarnia This Week

Last year in Ontario, more deceased donors than ever before gave the gift of tissue.

New numbers released by Trillium Gift of Life Network show that in 2013, there were more than 1,800 tissue donors, up from 1,702

in 2012.

"Often when people think of donation they think of the lives saved through organ donation, which is an amazing gift," says Ronnie Gavsie, TGLN President and CEO.

"What many people may not realize is that one donor can also enhance the lives of

up to 75 people through the gift of tissue. The potential to become a tissue donor is far greater than an organ donor and the impact is profound for the recipients."

Tissue donation can enhance lives in a multitude of ways: a cornea transplant can restore sight; a heart

valve replacement can help a child with a congenital heart condition be able to play and thrive; and bone grafts repair or rebuild diseased bone, helping to restore mobility.

"Though the number of tissue donors has been increasing for the past few years,

there are still not enough donors to meet demand so hospitals must import tissue from outside of Ontario to meet the needs of patients.

New data shows as of Dec. 31, 24% of eligible Ontarians (2.84 million) have registered their consent for organ and tissue donation.

Sarnia's registration rate is at 41%.

It is very simple to register consent for organ and tissue donation in Ontario - at www.BeADonor.ca, at any ServiceOntario centre, or by mail (download a copy of the consent form at www.giftoflife.on.ca).

**Romantic 2 course Meal** Only **\$25.95**  
Per Person & Taxes & Gratuities

**APPETIZERS**

- Buffalo Sauce & Roasted Sweet Potato Skewers
- Caprese Salad
- Shelly's Shrimp Cocktail

**ENTREES**

- Chicken Tacos with a pasta infused white wine sauce, Pilsener beer & vegetables
- Chile & Potato Crusted Salmon Filet, lemon garlic & tangy Chardonnay sauce, saffron wild rice
- Roasted Wild Mushroom Steak in beef stock with herb sauce served with garlic bread

Add one of our decadent desserts!  
**\$3.95**

**Shelly's**  
TAP AND GRILL

1400 VENETIAN BLVD  
519-337-7577  
www.shellystapandgrill.com

**SPRING IS AROUND THE CORNER, START PLANNING YOUR OUTDOOR PROJECT NOW**

**LOCALLY OWNED AND OPERATED**

**BORE**  
Fence Solutions Ltd.

519-542-5291

- Wood fences
- Modular Iron Fences
- Chainlink Fences
- Vinyl Fences and Railings
- Aluminum Railings

www.borefence.com  
Please call today for a free quote.

**LAKEVIEW**  
Cemetery & Crematorium

**For the month of February 2014, purchase one urn from our display and receive a second urn FREE\* when you spend \$1,000 or more on pre-need services.**

\*price must be equal or less

1016 COLBORNE RD. SARNIA, ONTARIO 519-337-5761

Visit Our Website  
www.lakeviewcemetery.ca

Find us on facebook.

