



# Habitat Restoration in Lake St. Clair



ONTARIO  
NATIVE SCAPE

RURAL LAMBTON



STEWARDSHIP NETWORK



# Rural Lambton Stewardship Network



- Started as a pilot project in 1994 with the Ministry of Natural Resources
- One of many Ontario Stewardship Councils
- Dissolved March 2013
- Incorporated in 2013 as a not for profit organization
- Relocated to Wallaceburg





# Targeted Landowners

- Targeted 15 Landowners
- Project Partners (Rallied the troops)
- Site visits, tours, pamphlets, brochures
- Completed all required permits
- Proposals & Project Partners: ECOACTION, OMNR, EC, FOSCR, LTVCA, SCRCA, COA, TGO, NWCF, HSP, Chatham-Kent



Lake St. Clair

Corsini Segment A

Karash Segment A

Walking Nature Trail

Rex 14 Segment

Karash Segment B

Corsini Segment B

Mitchells Bay Marina

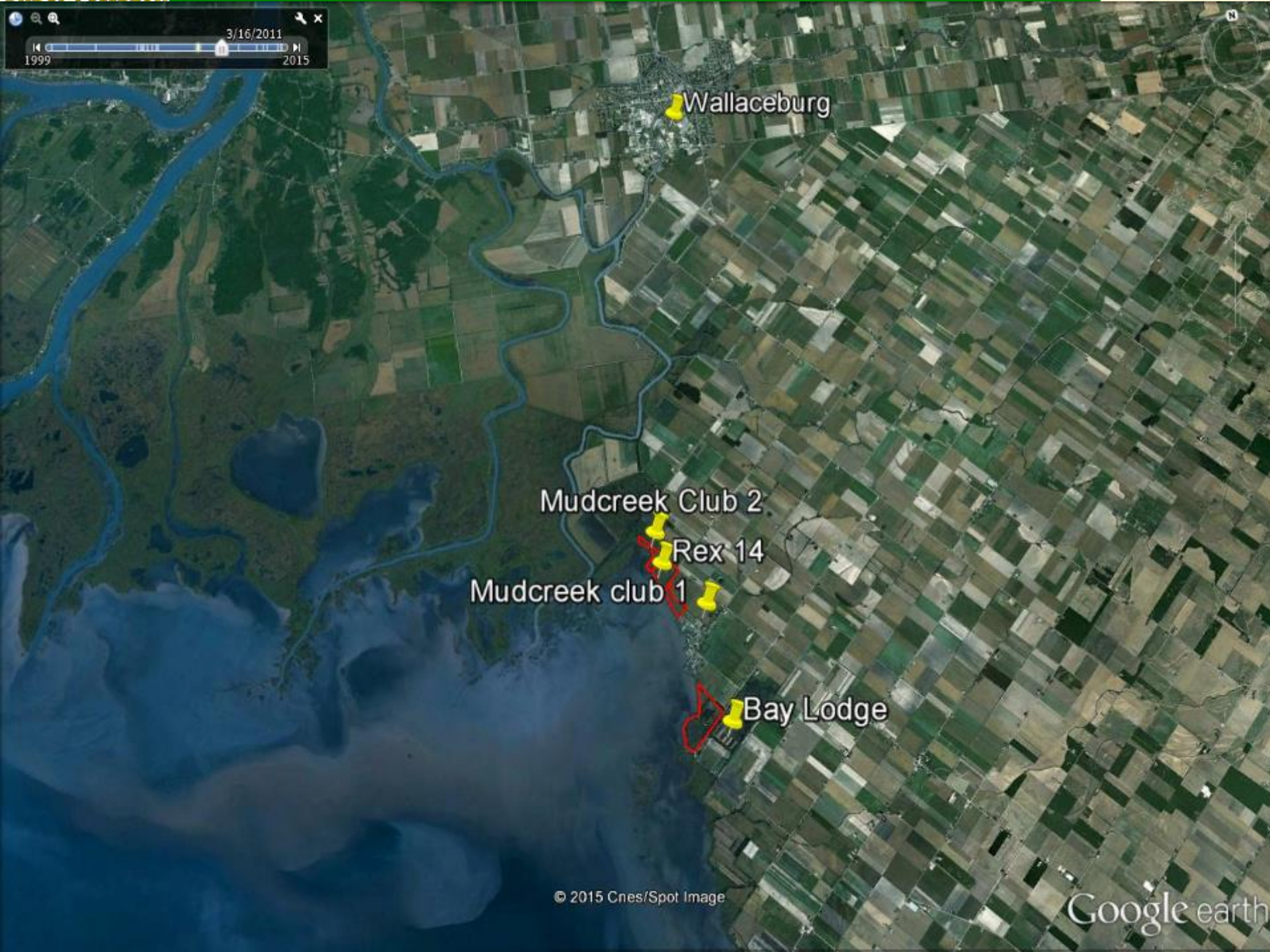
Mitchells Bay Beach

Crown Land Marsh

Jean-Marie Laprise

Bay Lodge

Gerald Lozon Wetland



Wallaceburg

Mudcreek Club 2

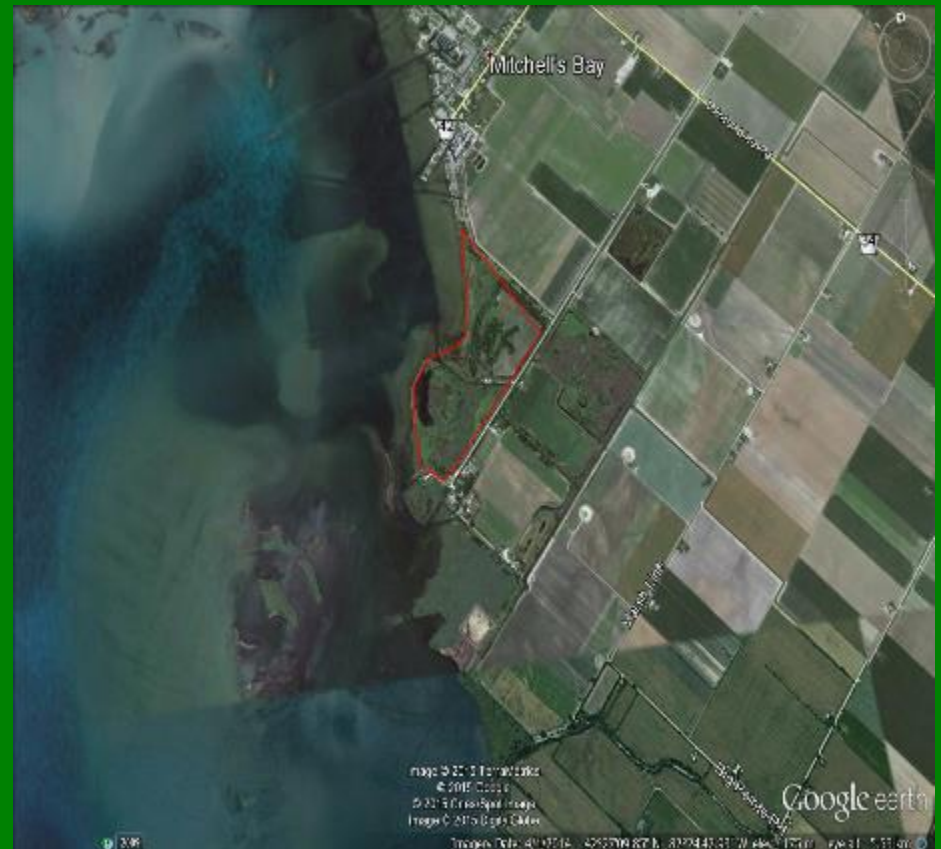
Rex 14

Mudcreek club 1

Bay Lodge

# Bay Lodge

- Privately owned
- Established in the early 1900's
- Property includes over 160 acres (65ha) of prime wetland habitat.
- 2km's of shoreline
- Severely degraded from invasive Phragmites



# Rex Club 14

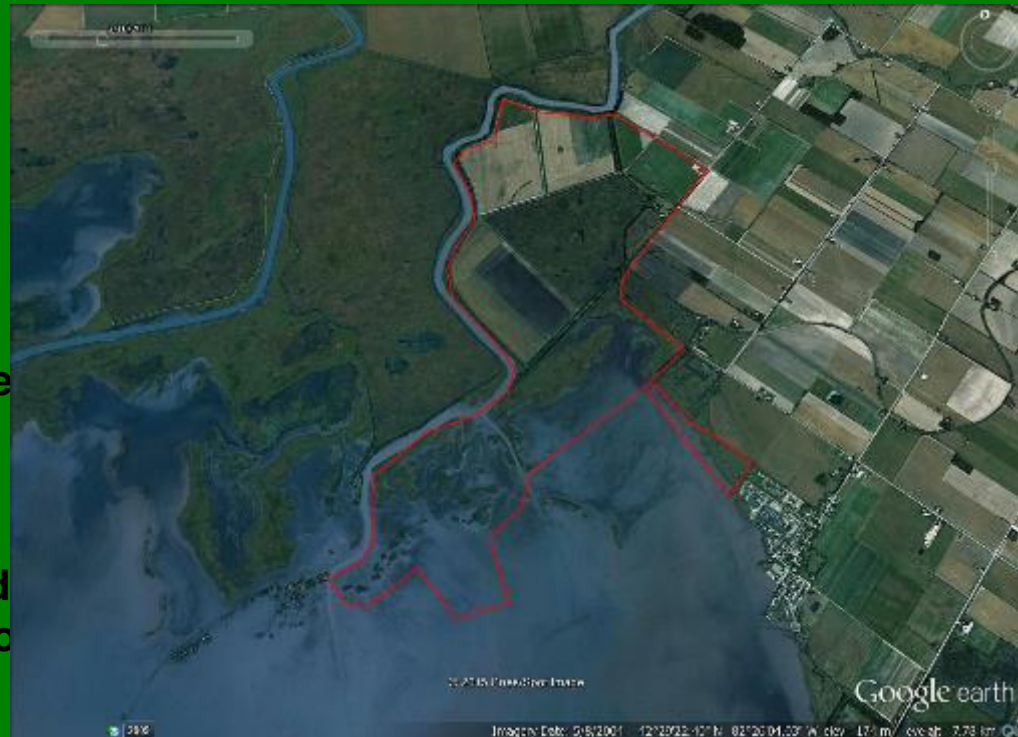
- Long history in the area dating back to 1830's
- 60 acres in total
- Operated as a popular hunting and fishing lodge
- Also severely degraded from low water and invasive phragmites





# Mud Creek Club

- The Mud Creek Club began its existence as North America's premiere hunting club back in 1807 when King George III deeded some 2000 acres on the northeast side of Lake St. Clair to the Earl of Selkirk.
- The club, after several owners was purchased in 1963 by the auto magnate Henry Ford II, and thus the beautifully appointed clubhouse was built. It served as Mr. Ford's retreat until 1977 when the present owners purchased the property and for the first time made it available to a select few hunters who want to experience duck hunting at its very best





# BAY LODGE



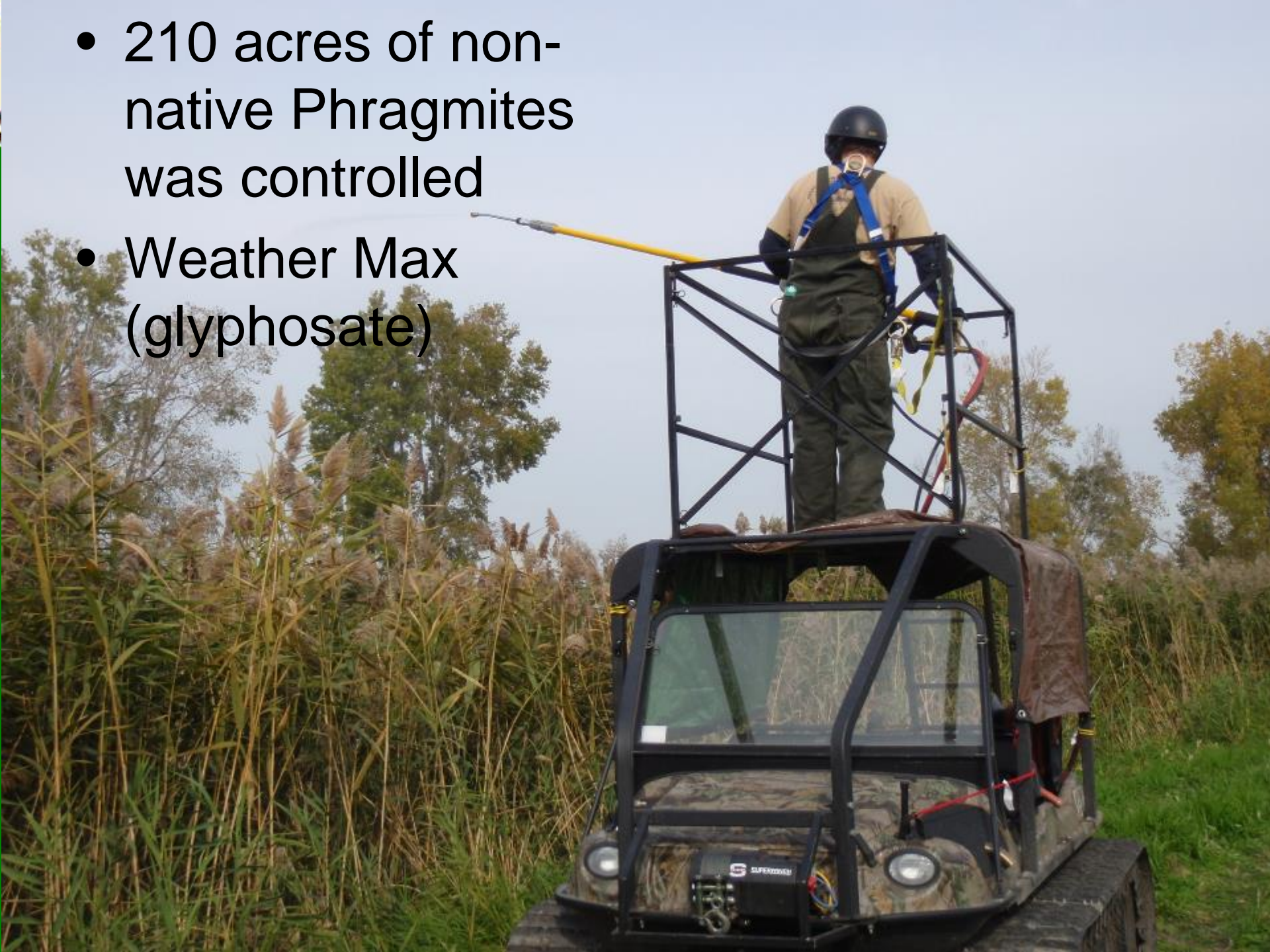


# REX CLUB 14



- Mud Creek Club

- 210 acres of non-native Phragmites was controlled
- Weather Max (glyphosate)





# 2.0km Fire Break





Rolling 130 acres of  
Phragmites Prior to  
Controlled Burn





130 acres of coastal Phragmites was burned







# PControlled Burn





## Mud Creek Club



2014/15 Excavated  
7 new wetlands totaling  
5.5 acres





# **BAY LODGE COASTAL WETLAND BEFORE**



# Bay Lodge Wetland Creation 2013/14







# REX CLUB 14 BEFORE







## Rex Club 50 acre habitat enhancement





# Snake Hibernacula & Habitat Clusters





# Snakes Control Mice, Rats & Mosquitos



1.8 km Walking Trail  
from Mitchell's Bay  
Marina to Rex Club  
14







Planted 3000 native  
grasses and  
flowers





# Tallgrass Prairie Seed Planting





# Tallgrass Prairie







# Butterflies















- Total Project Costs for the Mitchell's Bay Coastal Wetland Projects \$650,000 from 2012-2015
- 210 acres of wetland was created/enhanced



