

# CAMP ST. CLAIR

## VISITOR'S GUIDE

A.W. Campbell  
Conservation Area

Lorne C. Henderson  
Conservation Area

Warwick  
Conservation Area



Seek  
out your  
adventures!

discover



THE MUNICIPALITY OF  
**LAMBTON SHORES**

DISCOVER MORE AT | [lambtonshores.ca](http://lambtonshores.ca)

 Lambton Shores

  @LambtonShores

Find us on  pingstreet

### LAMBTON HERITAGE MUSEUM

Lambton Heritage Museum celebrates the history and heritage of the communities that make up Lambton County.

[www.heritagemuseum.ca](http://www.heritagemuseum.ca)

[heritage.museum@county-lambton.on.ca](mailto:heritage.museum@county-lambton.on.ca)

519-243-2600



### OIL MUSEUM OF CANADA

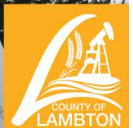
National Historic Site

The Oil Museum of Canada, in the Village of Oil Springs, preserves the site of the first commercial oil well in North America. Visitors from around the world come to learn the story of Canada's Oil Pioneers – a unique and captivating era of history!

[www.oilmuseum.ca](http://www.oilmuseum.ca)

[oil.museum@county-lambton.on.ca](mailto:oil.museum@county-lambton.on.ca)

519-834-2840



# Explore OUR PAST

LAMBTON COUNTY



## Sombra MUSEUM

Glimpses of Victorian living, marine history, and more!

Step into the past of an 1882 Victorian home and an 1820's log cabin. Immerse yourself in the history of the Lakes in our marine room, trace your roots in the archives, and discover what other treasures we have to offer.

3470 St. Clair Pkwy., Sombra, ON NOP 2H0

519-892-3982 • [sombramuseum.webs.com](http://sombramuseum.webs.com)

Check website  
for hours



## Moore MUSEUM

A museum... and so much more for you to explore!

With 12 historic and exhibit buildings, Moore Museum offers something to engage everyone's interest. Spend an hour or two exploring all that we have to offer.

94 Moore Line, Mooretown, ON NON 1M0

519-867-2020 • [mooremuseum.ca](http://mooremuseum.ca)

Check website  
for hours



## Arkona Lions MUSEUM

In beautiful Rock Glen Conservation Area

Impressive collection of Devonian Era fossils and indigenous artifacts, minerals, brachiopods, gastropods, crinoids, horned coral, fluted points, cache blades and more. Bus tours and groups welcome.

8685 Rock Glen Rd., Arkona, ON NOM 1B0

519-828-3071 • [abca.ca/conservationareas/rockglen](http://abca.ca/conservationareas/rockglen)

Check website  
for hours



## Welcome

*Welcome to our Conservation Areas. The Conservation Authority owns more than 2,100 hectares of land including beaches along Lake Huron, campgrounds, day-use parks, wetlands and forests. A wide range of recreational activities are available on these lands including swimming, boating, hiking, bird watching, camping, fishing and hunting.*

*Our three family campgrounds feature over 500 serviced sites available for both seasonal and overnight camping. We are committed to making your visit with us enjoyable. This guide will help you make the most of your stay with us. It has been designed to answer common questions and let you know a bit about your host. I hope you enjoy your visit with us.*

*Thank you for camping St. Clair.*



*Brian McDougall  
General Manager  
St. Clair Region Conservation Authority*

## "Proudly Serving Sarnia-Lambton"



**MP Marilyn Gladu**  
(Sarnia-Lambton)

Office: 1000 Finch Drive  
(Corner of Finch & Wellington)  
Sarnia, ON N7S 6G5  
519-383-6600



E: [Marilyn.gladu@parl.gc.ca](mailto:Marilyn.gladu@parl.gc.ca) [www.marilyngladu.com](http://www.marilyngladu.com)



**Commercial/Industrial Electrical**

**Agricultural Electrical**

**Residential Electrical**

**Mechanical Services**

Heating, Cooling, Refrigeration & Plumbing

**Solar Energy**

**Auto, Motor & Cylinder**

**Propane Refill Centre**

Propane available by appointment

P: 519-287-3111 | TF: 1-877-428-1668

278 Elizabeth Street, Glencoe  
[www.gerberelectric.ca](http://www.gerberelectric.ca)

On behalf of our residents, businesses, and organizations it is my pleasure to welcome you to Lambton County. We encourage you to explore why Lambton County is the home of discoveries that matter.



*Bill Weber*

**Bill Weber**  
 Lambton County Warden



**Office of the County Warden**  
[www.lambtononline.ca](http://www.lambtononline.ca)  
 1-866-324-6912

## Contents

|  |    |
|--|----|
| Watershed Map .....                        | 12 |
| Amenities Charts.....                      | 14 |
| A.W. Campbell Conservation Area .....      | 16 |
| Lorne C. Henderson Conservation Area ..... | 18 |
| Warwick Conservation Area .....            | 20 |
| 12 Awesome Things to do.....               | 22 |

## Advertiser Index

|  |    |
|--|----|
| Forest .....                           | 26 |
| Grand Bend, Port Franks, Newbury ..... | 27 |
| Petrolia .....                         | 28 |
| Strathroy .....                        | 29 |
| Warwick, Watford, Wyoming.....         | 30 |

## Emergency Numbers (519 Area Code)

|                        |       |
|------------------------|-------|
| O.P.P.....             | 9-1-1 |
| Fire Department .....  | 9-1-1 |
| Ambulance Service..... | 9-1-1 |

## Medical Centres

|   |                |
|---|----------------|
| North Lambton .....                       | 786-4545       |
| Forest - Dr. Walker .....                 | 786-2136       |
| Grand Bend.....                           | 238-2362       |
| Arkona .....                              | 828-3821       |
| Kettle Point.....                         | 786-2700       |
| Watford.....                              | 876-2222       |
| Good Doctors Walk-In Clinic, Sarnia ..... | 1-855-884-6638 |

## Hospitals

|                                  |              |
|----------------------------------|--------------|
| Bluewater Health .....           | 464-4400     |
| Strathroy Middlesex General..... | 245-5295     |
| Poison Control .....             | 800-268-9017 |

While every effort is made to ensure the accuracy of information in this guide, St. Clair Region Conservation Authority cannot be responsible for any errors or omissions.

Designed and produced by Grafiks Marketing & Communications, Sarnia, Ontario and St. Clair Region Conservation Authority.



**For reservations call:**  
 Warwick C.A.: 519 849-6770  
 A.W. Campbell C.A.: 519 847-5357  
 L.C. Henderson C.A.: 519 882-2280  
 During off-season call: 519 245-3710

## Reservations

- all campsite reservations are site specific
- all campsite reservations to be paid in full at the time of booking
- an \$8.00 fee is applied to each reservation
- a reservation and cancellation fee applies, please see our website
- for a full refund (excluding reservation and cancellation fee) cancellations must be made prior to noon on the

day of arrival. Reservations canceled after this time will be charged the reservation fee plus one night's camping fee

- a 3 night minimum stay is required on the Victoria Day (May) and Labour Day (August/September) long weekends. No refunds will be issued during this time for a shortened stay
- campsite reservations are held until 8 am the day following your scheduled arrival date
- payment can be made by Visa, MasterCard, cheque or money order. Cheques and money orders must be received within 14 days of making your reservation to confirm your campsite

**St. Clair River TRAIL**  
*Simply Spectacular*  
 actively connecting communities

Experience our scenic international border!

ONTARIO'S BLUE COAST  
 LAMBTON COUNTY

#myrivertrail 1-800-265-0316 stclairrivertrail.com

TOURISM Sarnia-Lambton

**FIND YOUR TRAIL**

**ROCK GLEN CONSERVATION AREA**  
 ARKONA LIONS MUSEUM AND INFORMATION CENTER

Whether you're a hiker, walker or cyclist we invite you to discover 900 kilometres of scenic trails sprawling Ontario's Blue Coast.

YOUR ADVENTURE AWAITS AT [LAMBTONCOUNTYTRAILS.COM](http://LAMBTONCOUNTYTRAILS.COM)!

## Campground Rules:

Please have respect for your fellow visitors and for the conservation area environment.

**Loud Noise - Disturbing other Persons:** Be considerate. Please keep the volume of your music and your voices to a reasonable level. Interfering with anyone's use or enjoyment of the park, day or night, is contrary to conservation area regulations.

**Alcoholic Beverages:** Alcohol consumption is permitted in the conservation area provided the camper is of the age of majority and on a registered campsite. Please note that our campgrounds have an alcohol ban for the Victoria Day weekend.



**Check Out Time:** Noon on the day of your departure.

**Pets:** All pets must be kept under control and on a leash. They are not permitted in the swimming area and they must not make excessive noise or disturb other campers.

**Day Use Hours of Closing:** 11:00 pm to 7 am.

**Number of People per Site:** A maximum of four persons or one family unit is permitted on each campsite.

## A Few Campfire Do's and Don'ts

### Do:

- use only the existing fire pit on your site
- purchase your firewood from the Conservation Area to help stop the spread of the emerald ash borer
- keep campfires small; they are easier to control
- let your fire burn down to ashes before putting it out. This reduces the amount of charred wood left in the fire pit
- make sure your fire is totally out before you leave your campsite or turn in for the night - fires left to burn out on their own may appear out, but often get stirred up by the wind

### Do Not:

- take decaying deadwood from conservation area wood lots
- bring in fire wood from outside the Conservation Area
- leave your campfire unattended - this is extremely hazardous; it's also a waste of wood if you're not there to enjoy it
- make additional fire pits on your campsite
- burn anything other than wood - do not burn food scraps, plastics or diapers in your fire
- build a fire if it is extremely windy

### Remember:

- drown your campfire thoroughly with water, stirring with a stick until it is cold to the touch
- decaying deadwood plays an important role in replenishing nutrients to forest soils

**Let's Find YOUR Dream!!**



**SYNERGY REALTY**  
BROKERAGE

*Deborah Rankin.ca*  
SALES REPRESENTATIVE

Leading you the way home

Call: **519.245.4189**  
Text: **519.245.4189**  
109 Front St. E., Strathroy

# O'tools

**RENT OR BUY**

**Carts, Parts & Rentals**

See our otools.ca website

 facebook.com/OToolsCanada

- NEW Villager 4 Passengers
- RE-PURPOSED Golf Cars
- Golf Car Batteries
- Golf Car Accessories
- Golf Car Rentals - Gas and Electric
- Golf Car Indoor Winter Storage



7977 Rawlings Road, Forest ON N0N 1J2

**(519) 786-5902**

info@otools.ca | www.otools.ca

Monday - Saturday: 9am - 5pm  
Closed Sunday & Holiday Mondays

JOIN  
the Club.

**ClubCar**



## Cycling

Cycling is a great activity for the whole family. But remember, sharing the road with cars requires some thought and consideration on behalf of you the biker, and the driver of the vehicle.

Remember to obey the rules of the road including traveling in the proper direction on one way roads. Racing is not permitted and cyclists must yield to pedestrians. Keep your bike locked up when not in use, even on your campsite. Remember to wear your helmet.

## Recycling at St. Clair

Recycling bins are located near the garbage depots and are appropriately signed for recyclable materials. Please do not throw garbage into the recycling bins.

## We Welcome Pets

All pets must be kept on a leash not exceeding 2 metres (6 feet) in length at all times.

As a pet owner, you are responsible for preventing your pet from making excessive noise or disturbing others.

Public health rules prohibit domestic animals in designated swimming areas or in washrooms and shower areas.

Help keep our conservation areas clean, please clean up after your pet.

## Take only pictures; leave only footprints

DO NOT pick the flowers. The opportunity to produce seeds is lost and the species' future may be threatened. Many species of butterflies, moths, insects and birds are dependent on a flower's nectar for food. Some species are so specialized that they make use of only one type of plant. If the host plant disappears, so does any wildlife species that is dependent on it. Leave the flowers for park wildlife and the enjoyment of other visitors. Please take only a picture.

## Keep Your Children Safe

Always supervise your child's trip to our washrooms, beaches and trails.

If you've lost a child, inform area staff immediately. They can ensure that a search is quickly organized.

Know where your children are, what they are wearing and set a time when they should be back at the campsite.

Get the last name and campsite number of any new friends your children have made.

Always leave one adult on the campsite.

Let your children know that they can get help from park staff.

Park roads are used by young children for cycling, however they should know the safety rules.

## Turtle Surveys

Conservation Authority staff regularly undertake a turtle survey on the East Branch of the Sydenham River. In particular, surveyors look for three turtle Species at Risk: the eastern spiny softshell turtle, the northern snapping turtle and the northern map turtle.

## Conservation For Kids

Each year, 10,000 students get to poke through mud, hold a frog or measure the quality of water through the Conservation for Kids program. The Conservation Authority offers 25 different programs tied to the curriculum taught in schools. The majority of the outdoor conservation education programs are operated out of the Lorne C. Henderson Conservation Area. They are also offered at the Wawanosh

Wetlands, Strathroy Wetlands and the A.W. Campbell Conservation Areas. Many of the education programs are supported by donations from businesses and organizations.

## Leaves of 3 let it be

Learn to identify the poison ivy plant.

If you think you've had contact with poison ivy, follow these simple steps:

Wash all exposed areas with cold running water as soon as you can reach a stream, lake or garden hose. If you can do this within five minutes, the water may keep the plant's invisible oil urushiol from contacting your skin and spreading to other parts of your body. Within the first 30 minutes, soap and water are helpful.

If you know you have been exposed and have developed severe reactions in the past, consult your doctor.



# Central Sanitation

The Most Popular Seat At Any Event!

Proudly serving you since 1976

- MOL Approved
- Weekend
- Wheel Chair Accessible
- White Wedding Units
- Hand Wash Units/Trailers
- Wedding/Anniversary
- Concerts/Festivals
- Special Events
- Construction/Work Sites
- Heated/Air Conditioned
- Septic Tank Pump Outs
- Catch Basins/Lift Stations
- Locate/Camera Services
- Jetter & Riser Services
- Roll Off Truck Services

PORTABLE TOILETS

WASHROOM TRAILERS

SEPTIC SERVICES



800-386-4538

[www.centalsanitation.com](http://www.centalsanitation.com)

519-336-2465

1316 Plank Rd. Sarnia • [info@centalsanitation.com](mailto:info@centalsanitation.com)

# ALWAYS SOMETHING TO DO



**Just for Kids** – Crafts, Giant Slip & Slide, Teen Dances, Fishing Derby

**Adult Time** – Bingo, Horseshoe Tournaments, Antique Cars

**Family Fun** – Movie Nights, Geo-Caching, Wagon Rides, Concerts

**Food, Food & more Food**  
– Pig Roast, Fish Fry, Pot Lucks

**Celebrate!** Canada Day Weekend Fireworks; Christmas in July; Halloween in the Park



# Geocaching

Geocaching is a high-tech treasure hunting game which uses a global positioning system (GPS) unit to locate hidden caches (treasure). Some people refer to geocaching as using billion dollar satellites to find Tupperware in the woods. Geocaching started in early 2000 when the general public gained access to satellite signals. There are over 3 million active geocaches and over 6 million geocachers worldwide. Exploring local parks or trails while geocaching can cut stress and improve your mood.

A cache is a hidden storage container of any size, holding at the minimum, a log to record the date found and the finder's names. A typical cache is a small waterproof container with a logbook and if large enough, possibly toys or trinkets of little value.

Geocaches can be found all over the world. Geocaches come in all different shapes, sizes, and difficulties and are hidden in both rural and urban settings. They can be found at local parks or Conservation Areas, on a canoe outing, or even in shopping areas.

Geocaching offers something for everyone, from families with children to retirees. Some geocachers play the game to see how many total "finds" they can get, while others play to see how many new provinces or countries they can visit. Geocachers can discover numerous trails and Conservation



Areas previously unexplored. It is also an excellent educational tool and a lot of fun!

A Travel Bug is the name used to describe a tag that travels from cache to cache. It has a unique tracking number allowing its movements to be recorded online. Some tags are fastened to an object, known as a hitchhiker, and given a goal. It is important to not keep travel bugs. Many travel bugs have traveled over 100,000 km!

"Cache In Trash Out" is an ongoing environmental initiative supported by the worldwide geocaching community. Bring a trash bag along with you on your walks in the woods and pick up the occasional piece of trash you see on the trail. Through these efforts, we help preserve the beauty of our natural areas.

If being outdoors and treasure hunting appeals to you, check out [www.geocaching.com](http://www.geocaching.com) for a free membership.

Written by Sharon Nethercott, Conservation Education Coordinator, SCRCA

# St. Clair Region Conservation Authority

The St. Clair Region Conservation Authority is a local watershed management agency that delivers services and programs that protect and manage water and other natural resources in partnership with government, landowners and other organizations. We promote an integrated watershed approach balancing human, environmental and economic needs. Conservation Authorities are organized on a watershed basis. Our region includes the watersheds of the Sydenham River, southern Lake Huron, the St. Clair River and northern Lake St. Clair.

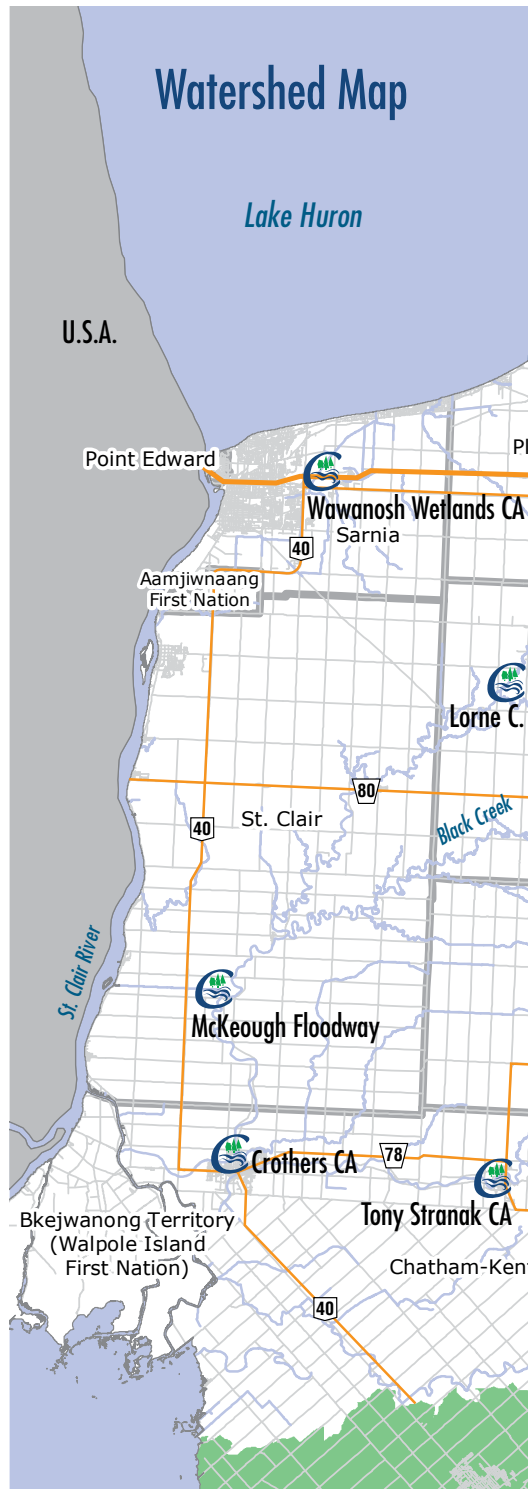
## Conservation Authority Programs Include:

- Flood Damage Reduction
- Drinking Water Source Protection
- Wildlife Habitat Restoration
- Recreation
- Erosion Control
- Water Quality
- Woodlot Management
- Outdoor Education
- Hazard Land Planning
- Tree Planting
- Species at Risk

## The St. Clair Region Conservation Foundation

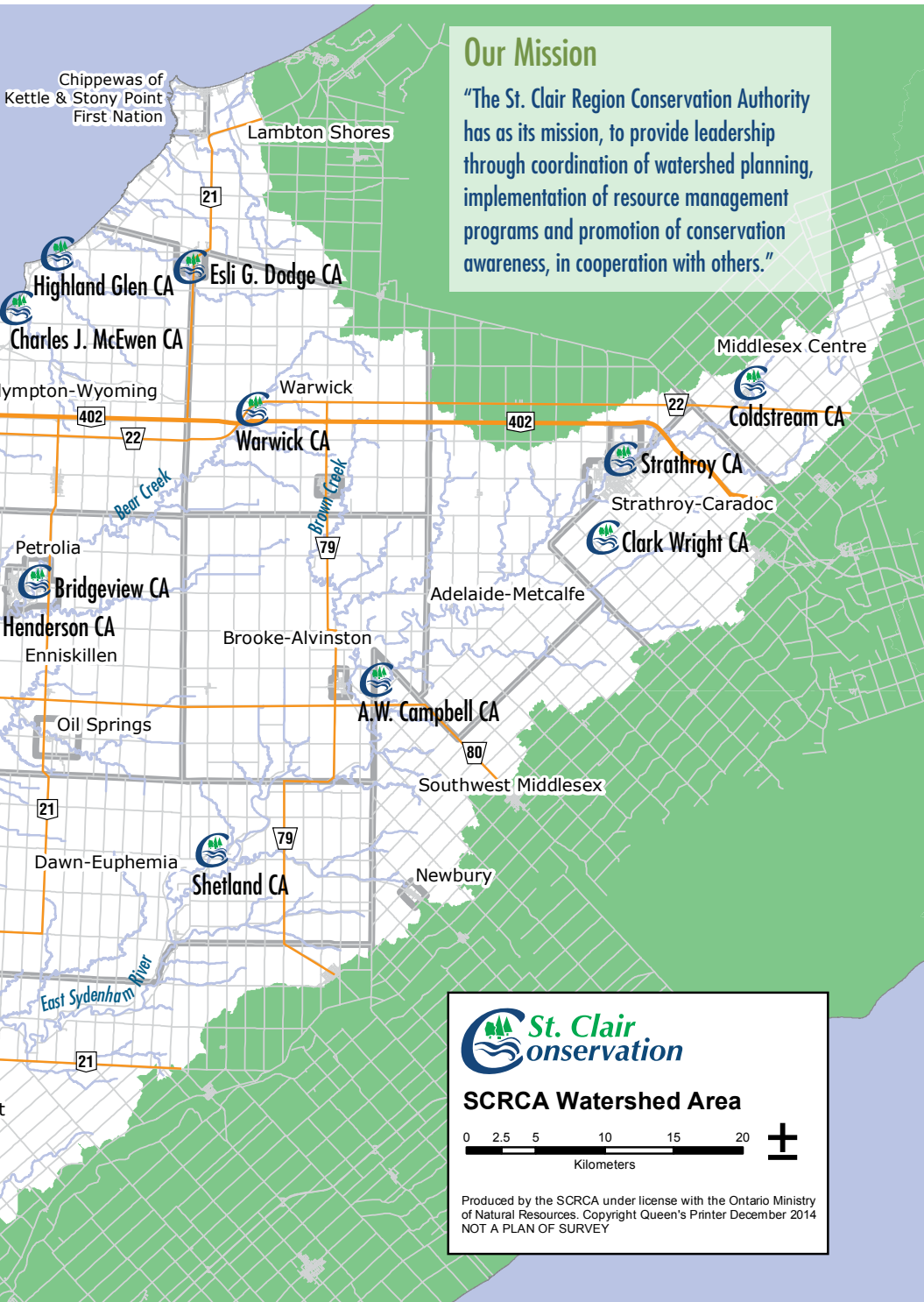
The Foundation is pleased to be able to support our Conservation Areas by providing funds for recreation facilities. We sincerely hope the playground equipment, canoes, paddle boats and wheelchair accessible washrooms have helped make your stay more enjoyable. To find out how you can help, visit our website at [www.scrca.on.ca](http://www.scrca.on.ca) or call the office at 245-3710. Good camping!

*Duncan Skinner,  
St. Clair Region Conservation Foundation President*

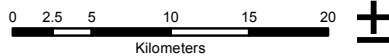


## Our Mission

"The St. Clair Region Conservation Authority has as its mission, to provide leadership through coordination of watershed planning, implementation of resource management programs and promotion of conservation awareness, in cooperation with others."



### SCRCA Watershed Area



Produced by the SCRCA under license with the Ontario Ministry of Natural Resources. Copyright Queen's Printer December 2014  
NOT A PLAN OF SURVEY

| Conservation Areas | Camping       |                        |       | Swimming Pool | Beach | Picnic Shelter | Play Ground | Trails | Phone    |
|--------------------|---------------|------------------------|-------|---------------|-------|----------------|-------------|--------|----------|
|                    | Serviced Lots | Seasonal and overnight | Group |               |       |                |             |        |          |
| A.W. Campbell*     | x             | x                      | x     | x             |       | x              | x           | x      | 847-5357 |
| Warwick*           | x             | x                      | x     | x             |       | x              | x           | x      | 849-6770 |
| L.C. Henderson*    | x             | x                      | x     | x             |       | x              | x           | x      | 882-2280 |
| Coldstream         |               |                        |       |               |       | x              | x           | x      | 666-0190 |
| Shetland           | x             | x                      | x     |               |       | x              | x           |        | 692-5148 |
| Wawanosh Wetlands  |               |                        |       |               |       | x              |             | x      | 245-3710 |
| Highland Glen      |               |                        |       |               | x     | x              |             |        | 245-3710 |
| C.J. McEwen        |               |                        |       |               | x     |                |             |        | 245-3710 |
| Clark Wright       |               |                        |       |               |       |                |             | x      | 245-3710 |
| Bridgeview         |               |                        |       |               |       | x              | x           | x      | 882-2350 |
| Strathroy          |               |                        |       |               |       |                |             | x      | 245-3710 |
| Esti G. Dodge      |               |                        |       |               |       | x              | x           | x      | 786-2335 |
| Crothers           |               |                        |       |               |       | x              | x           | x      | 360-1998 |
| Tony Stranek       |               |                        |       |               |       | x              | x           | x      | 360-1998 |

\*WiFi available in certain areas of the CA.

| Amenities          | A.W. Campbell | Warwick | L.C. Henderson | Management Areas (No Facilities) | Trails | Phone    |
|--------------------|---------------|---------|----------------|----------------------------------|--------|----------|
| Fishing            | x             | x       | x              | Sinclair                         |        | 245-3710 |
| Canoes/Kayaks (\$) | x             | x       | x              | Huff Woodlot                     |        | 245-3710 |
| Ice (\$)           | x             | x       | x              | Perch Creek                      | x      | 245-3710 |
| Laundry (\$)       | x             | x       | x              | Moore                            |        | 245-3710 |
| Dump Station       | x             | x       | x              | Marthaville                      | x      | 245-3710 |
| Trailer Pump Out   | x             | x       | x              | Harrison Woodlot                 |        | 245-3710 |
| Frisbee Golf       | x             | x       | x              | Bates Conservation Lands         |        | 245-3710 |
| Mini Golf          | x             | x       | x              | Gawne                            |        | 245-3710 |
|                    |               |         |                | McLean Conservation Lands        | x      | 245-3710 |
|                    |               |         |                | Reid Property                    |        | 245-3710 |



## Creature Feature



The Snapping turtle is a common sight at many lakes, ponds and other slow moving water bodies. They spend the majority of their life in water. As the largest freshwater turtle in Canada, this species can attain a shell length of up to 45 cm with weights exceeding 70 lbs (although it may appear to be even larger!). The snapping turtle is an omnivore which means it eats both plants and animals. Often times the snapping turtle can be seen on cleanup duty as it is a great scavenger, eating up dead fish and animals and keeping the water clean.

Snapping turtles are very long-lived creatures with many individuals living up to 70 years of age. Adult females lay eggs in late May and into early June, sometimes having to travel long distances across dangerous terrain (like roadways) to get to the perfect nesting spot. Mature females lay between 40 and 50 eggs per clutch during the nesting

season. During this time the nests are at risk of predation by skunks, raccoons and foxes.

Snapping turtles are often given a bad reputation for being mean and aggressive. They can be defensive when on land where they are vulnerable because unlike other turtles, their lower shell is too small to provide them with complete protection from predators. Their large body and strong jaw allow them to strike with amazing speed and force but only when provoked or disturbed. It is best to leave these turtles alone and instead respect this magnificent creature.

### Did you know?

A snapping turtle will not bite swimmers. In the water a snapping turtle has no major predators and is more apt to swim away from danger than to stick around. Although you may often see them laying just under the mud on the bottom of the pond or lazing about in the sun they will swim quite quickly when they want to get away.

*Written by Kelli Smith, Watershed Biologist, SCRCA*



**Because there  
are way more  
important  
things in life  
than banking**



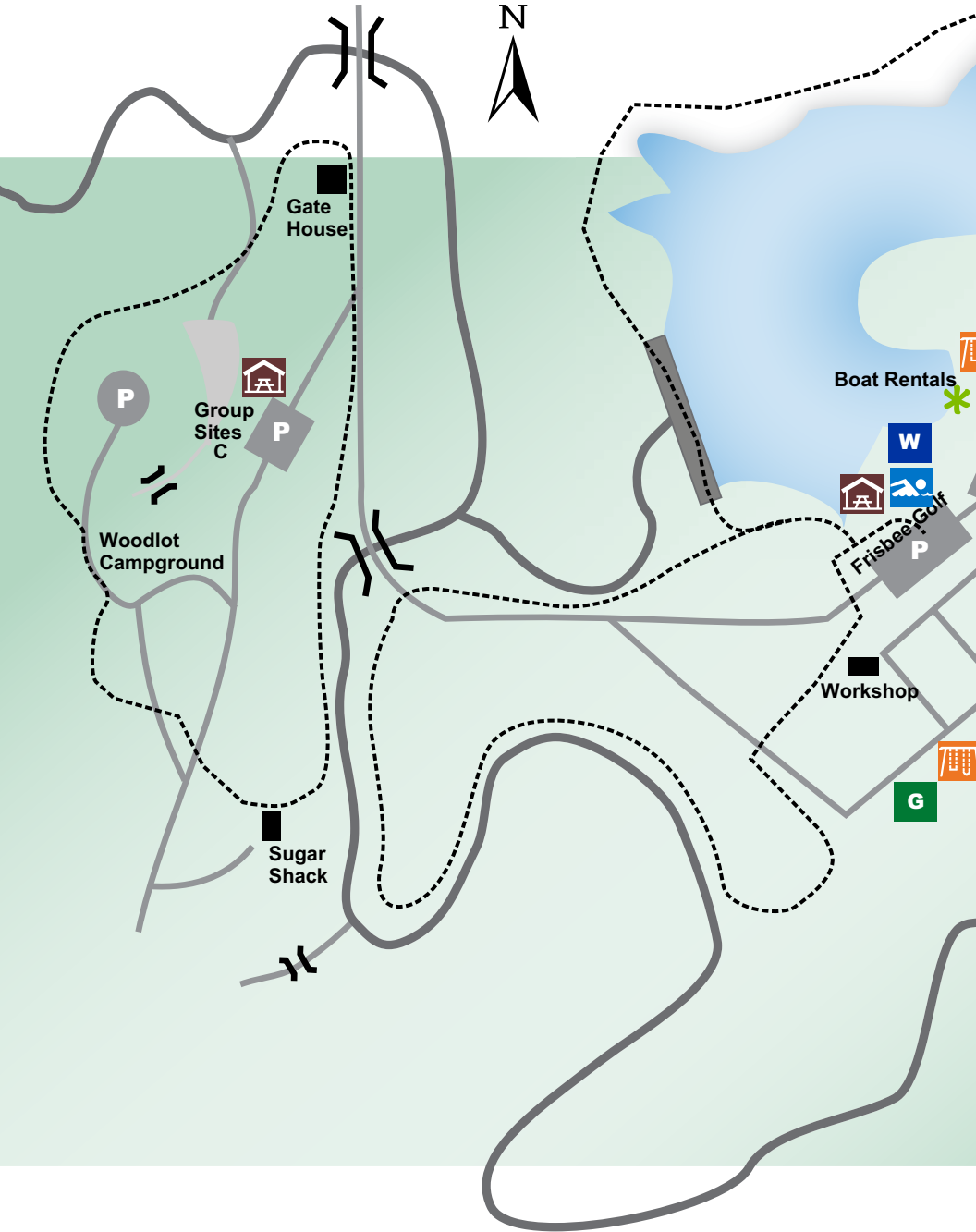
Visit one of Libro's  
31 branches or **libro.ca**  
to find out how we can help  
you focus on what's important.

72 Front St. W., Strathroy  
519-245-1261

 **Libro**  
CREDIT UNION

# A.W. Campbell Conservation Area

8477 Shiloh Line, Brooke-Alvinston, Ontario 519-847-5357





# Lorne C. Henderson Conservation Area

3653 Petrolia Line, Petrolia, Ontario 519-882-2280

← To Sarnia



Petrolia Line





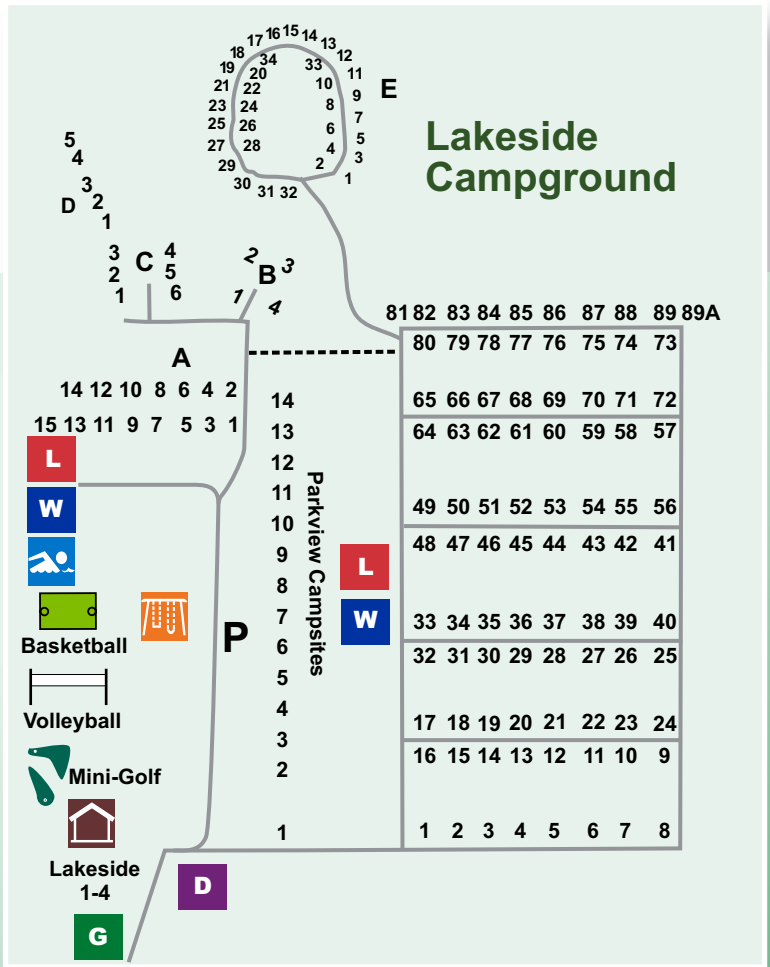
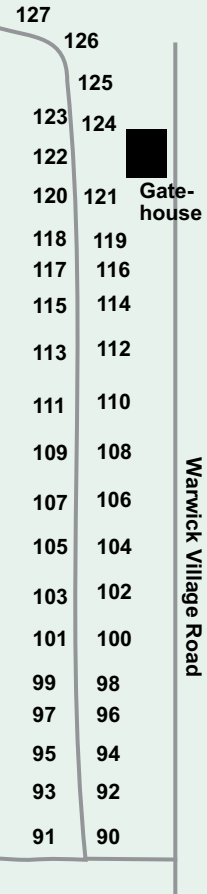
# Warwick Conservation Area

6101 Warwick Village Road, Warwick, Ontario 519-849-6770





# Campground



# 12

# AWESOME THINGS TO DO

- 1** **Stones 'N Bones** – Sarnia's Number One Tourist Attraction! Dinosaur gallery, Canadian animals, safari room, giant shark jaws, rare minerals, fossils, butterflies, insects and more. A must see!
- 2** **Alton Farms Estate Winery** – We offer a wide assortment of handcrafted wines for any occasion. Walk through the vineyard and enjoy our scenic property! – Plympton-Wyoming
- 3** **Duc D'Orleans II** - Cast off with us under the watchful eye of the Captain and his crew! Two-hour luncheon cruises (with commentary and music) on the beautiful St. Clair River, Sarnia.



## Sarnia's No. 1 tourist attraction!

We feature collections of fluorescent minerals, fossils, minerals, gemstones, shells, butterflies, insects, Canadian animals, safari room, huge shark jaws.



**50 ft. dinosaur gallery,  
all on permanent display!**

*Open 10-5 Wed.- Sun. & Holiday Mondays  
Year Round*

## STONES 'N BONES

223 N. Christina St., Sarnia • 519-336-2100  
[www.stonesnbones.ca](http://www.stonesnbones.ca)



**Alton Farms**  
ESTATE WINERY

*Sip*  
HAPPENS!

EVENTS  
TASTINGS  
LIVE MUSIC  
PATIO WITH  
WOOD-FIRED  
PIZZA-OVEN



5547 Aberarder Line, Plympton-Wyoming     
519-899-2479 • [altonfarmsestatewinery.com](http://altonfarmsestatewinery.com)

## Duc D'Orleans II Cruise Ship



**Cruise the beautiful  
St. Clair River  
aboard our ship**

- Ideal for company picnics, weddings, reunions, or corporate affairs
- Daily luncheon cruises
- Sunday afternoon cruises

Departs Mackenzie Park,  
Sarnia Reservations  
required

519-337-5152 • 1-888-493-9941  
[www.ducdorleans.com](http://www.ducdorleans.com)



4

**Twin Pines Orchards and Cider House** - Estate winery and fruit orchard, offering award-winning apple cider, apple wines, hard ciders and ice ciders made on site.

5

**Munro Honey & Meadery** - For the best locally-produced honey and delicious, award-winning mead. Observation hive, gift shop.

6

**Oil Museum of Canada** – This trip to the past preserves the site of the first commercial oil well in North America – The Village of Oil Springs



**TWIN PINES**  
ORCHARDS & CIDER HOUSE  
ESTATE WINERY

- Hard Cider and Perry
  - Ice Cider
- Gift Boutique
  - Apples
- Preserves & Pies
- Premium Sweet Cider
- Gourmet Foods



**HOURS:**  
**June-December**  
Mon-Fri: 10-5 • Sat: 9-5  
Sun: 1-5  
**January-May**  
Sat: 9-5 • Sun: 1-5

*Call for extended  
summer hours*

Join us on  
Facebook

Twitter

8169 Kennedy Line, Thedford  
**519-296-5556** or **519-296-5558**  
**twinpinesorchards.com**

@twinpinescider

*...buzz on  
over to*   
**Munro Honey  
& Meadery**  
*Something for Everyone!*

- Honey & Hive Products
- Gift Shop • Observation Hive
- “Munro’s Meadery”, Ontario’s First Meadery
- Sweet’ning Your Day Since 1914

**Hours:** Jan.-Mar., Mon.-Fri.: 9-5  
Apr.-Dec., Mon.-Sat.: 9-5



**MUNRO HONEY**

3115 River Street, Alvinston  
**519-847-5333**

**www.munrohoney.com**

Facebook

Twitter

# 12

# AWESOME THINGS TO DO

**7** **Bluewater Trails** – The Howard Watson Nature Trail is a 16 km trail for hiking, biking and cross-country skiing. There are numerous trails for all seasons!

**8** **Point Edward Waterfront Park** – Drive through our quaint village of shops on Michigan Ave. that lead you to our Bluewater Bridge where our famed fries are! Watch the giant freighters as they pass by.

**9** **Town of Petrolia and Victoria Playhouse Petrolia** – Historic village with live theatre. Come out and be part of the magic!

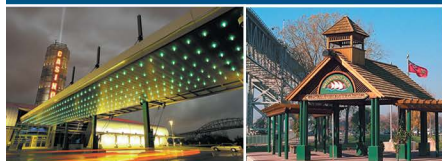


*Join in on an active lifestyle of walking, cycling, running and hiking.*

*Discover your Bluewater Trails today!*

[www.bluewatertrails.com](http://www.bluewatertrails.com)  
[facebook.com/bluewatertrails](https://facebook.com/bluewatertrails)

Welcome to  
**POINT EDWARD**



135 Kendall Street • 519-337-3021  
[www.villageofpointedward.com](http://www.villageofpointedward.com)





10

**Brigden Fair** – A Thanksgiving Weekend tradition, is a showcase of agricultural and rural activities to bring awareness to the urban community about the life on the farm – Brigden

11

**Tee Off** – There are numerous golf courses in the region to test your skills, offering the challenges you are looking for!

12

**Take a Dip in Lake Huron** – Both the Highland Glen and C.J. McEwen Conservation Areas offer access to beautiful sand beaches.



For advertising opportunities in the **OFFICIAL** St. Clair Conservation Guide, please contact

519-336-5230

**Grafiks**  
marketing & communications

**YOUR ad could be here!**

# SARNIARV centreRV

[www.sarniarv.com](http://www.sarniarv.com)

- **Exclusive Dealer for Forest River:**  
Salem Cruise Lites, Salem, Salem Villa Park Models, Salem Villa Estate Park Models
- **Full Service Repair Centre (park service available)**
- **Largest Selection of In-Stock RV Parts**



Check out our new 360 virtual tours on new trailers on our facebook page or [www.sarniarv.com](http://www.sarniarv.com)

2091 London Line  
Sarnia, ON • 519-542-2089



Forest

# Forest Farmer's Market

May 24 - October 11, 2019

Friday Mornings 8 am – 1 pm

On King St., W., Downtown Forest

## Williamson Farms COUNTRY STORE

Our own Beef & Maple Syrup.  
Local Ontario food, gifts,  
collectibles, toys & games.

Monday to Friday, 9am to 5:30pm  
Saturday, 10am to 4pm

14 King Street West, Forest, ON

226-520-0144

[williamsonfarms.ca](http://williamsonfarms.ca)



OWNED & OPERATED BY  
**HEIDI'S**  
YOUR NEIGHBOURS

**independent**  
YOUR INDEPENDENT GROCER

Shop at Heidi's Your Independent Grocer, a full service grocery store in beautiful downtown Petrolia for all your camping and picnic needs.

- Fresh Produce
- Instore Bakery – cakes, pies, breads, buns and more
- Hot Meals to Go – fully cooked BBQ chickens and wings
- Large selection of deli meats & salads
- Fresh and frozen meat and seafood
- Full line of grocery products including dairy and frozen
- Kodak Picture Maker
- Lottery

Mon.-Fri. 8-9  
Sat. & Sun. 8-7



**HEIDI'S**  
4136 Petrolia Line, Petrolia  
519-882-2211

Grand Bend  
Port Franks  
Newbury

**McNAUGHTON  
RV**

TOWABLES • PARK MODELS • FIFTH WHEELS



41 Hagerty Rd., Newbury, ON NOL 1Z0  
519-693-4492 • 1-877-901-DEAL (3325)

[www.mcnaughtondodge.com](http://www.mcnaughtondodge.com)

**BEAVERTAILS<sup>®</sup>**

WORLD FAMOUS PASTRIES  
SINCE 1978



**BEAVERTAILS**

**\$1 OFF\***

Only available at the BEAVERTAILS\* store of:  
**GRAND BEND, ON**  
14 MAIN ST. WEST

Please present your coupon before ordering. \*Valid May 11 - Sept 2, 2019. \$1 OFF the purchase of any BEAVERTAILS\* pastry.

[BeaverTailsGrandBend](#) #BeaverTails #GrandBend

The BEAVERTAILS\* logo and wordmark are property of BeaverTails Brands Inc. and are used under license.

Licensed  
AGCOI



Serving  
delicious breakfasts,  
lunches & dinners.  
Everything you need  
in one stop.

Where  
Comfort is a  
Food Group!

Open daily 6 am to 10 pm  
Sundays open at 7 am

1-519-243-2990

Hwy. 21 at Port Franks Rd., Port Franks, ON



**GROG'S**  
**PUB & GRILL**  
GREAT FOOD • FINE SPIRITS

OPEN DAILY FROM 11AM TO 10PM • DINE IN OR TAKE OUT

519-243-2770 [www.grogs.ca](http://www.grogs.ca)

... WHERE *Friends* MEET! ...

8604 LAKESHORE RD., PORT FRANKS, ON (AT THE CORNER OF HWY 21 & HWY 79)

# Petrolia



## Welcome to *Town of* **PETROLIA**

*you'll be surprised!*



town.petrolia.on.ca  
519-882-2350

### **Town Signature Events:**

- Victoria Playhouse Petrolia Summer Season: May-September
- Pizzafest: 1st Sat. in June
- Canada Day Celebrations: July 1
- Art in the Park & Annual Barn Dance: 2nd weekend in July
- Christmas in the Park & Santa Claus Parade: 1st weekend in Dec.



May to October  
Saturdays, 7:30 - noon

396 Fletcher Street  
(behind the Petrolia Library)

**Get Real! Get Fresh!  
Get Local!**

## **Podolinsky** Equipment Ltd. PETROLIA, ON

6057 Petrolia Line, Petrolia ON  
**(519)844-2360**



**WWW.PODOLINSKY.COM**

# Strathroy



## The Trailer Guy



RV Service & Parts • Retail Store

- Water leaks & damage repair
- Rubber roof installation & repair
- Insurance claims & warranty work
- Slide-out repairs
- Sidewall delamination
- Figerglass repairs
- Resealing unit
- Custom rebuilds
- Pin-flex repairs
- Flooring
- Interior repairs
- Trailer setup
- Winterization

**TONY  
COUTO**

*Over  
19 Years  
Experience!*

145 Queen Street, Strathroy

**519.494.5155 • 519.245.1551**

E: [thetrailerguy10@hotmail.com](mailto:thetrailerguy10@hotmail.com)



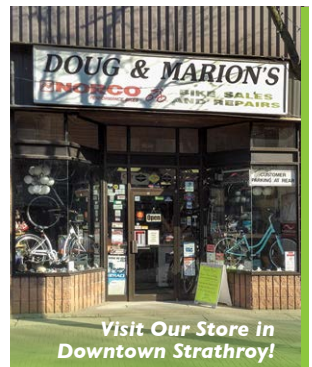
## NEW & USED BIKES

- Norco • Haro • Biria • DCO
- Evo • Seven Peaks

• Repairs • Accessories • Clothing  
Same Day/Next Day Service

*Cycle Safe - Cycle Smart -  
Cycle Healthy!*

25 Front Street West, Strathroy, ON  
**519-245-9923**  
[dougandmarionsbikes.com](http://dougandmarionsbikes.com)



*Visit Our Store in  
Downtown Strathroy!*

Warwick,  
Watford,  
Wyoming



**Fresh Fruits & Vegetables**  
Pick your own or already picked

*Visit our Country Store – You'll love it!*

Open Monday to Saturday, Closed Sundays  
(519) 845-3482 • [www.zekveldgardenmarket.ca](http://www.zekveldgardenmarket.ca)

Located 10 minutes west of  
Warwick Campground on Highway 22



## ***Ron Clark Motors***

**RECREATIONAL VEHICLE DIVISION**

*Your one stop shop for your entire  
Vehicle, Trailer and Hitching Needs!*

See the latest in new & used  
Tent Trailers, Travel Trailers,  
Fifth Wheels & Hybrids from

**Jayco**

Hwy. 21  
Wyoming, ON  
519-845-3352

[www.ronclarkmotors.com](http://www.ronclarkmotors.com)



**LAMBTON COUNTY'S OLDEST & MOST TRUSTED RV DEALER**

"I am proud  
to serve  
Sarnia-Lambton"



# **BOB BAILEY**

## **MPP - Sarnia-Lambton**

Constituency Office:  
805 Christina St. North,  
Suite 102, Point Edward,  
Ontario N7V 1X6

[www.bobbaileympp.com](http://www.bobbaileympp.com)

Tel: (519) 337-0051 • Email: [bob.baileyco@pc.ola.org](mailto:bob.baileyco@pc.ola.org)

# Trails

## Explore our Conservation Areas

**Wawanosh Wetlands Conservation Area - 2.5 km**

Facilities: parking, washroom

**A.W. Campbell Conservation Area - 8 km**

Facilities: parking, washroom

**Lorne C. Henderson Conservation Area - 5 km**

Facilities: parking, washroom

**Warwick Conservation Area - 2 km**

Facilities: parking, washroom

**Coldstream Conservation Area - 3 km**

Facilities: parking, washroom

**Strathroy Conservation Area - 3 km**

Facilities: parking,

**Clark Wright Conservation Area - 3 km**

Facilities: parking

**Bridgeview Conservation Area - 2 km**

Facilities: parking, washroom

**McKeough Conservation Area - 3 km**

Facilities: parking

**Perch Creek Habitat Management Area - 5 km**

Facilities: parking

**Marthville Habitat Management Area - 1.6 km**

Facilities: parking

**Lambton County Heritage Forest - 8 km**

Facilities: parking

For more information including trail maps visit:  
[www.scrca.on.ca/conservation-lands/hiking/](http://www.scrca.on.ca/conservation-lands/hiking/)



205 Mill Pond Crescent, Strathroy, ON N7G 3P9 • Tel: 519 245-3710 • email: [stclair@scrca.on.ca](mailto:stclair@scrca.on.ca)

