

Green Infrastructure in Rural Drainage

Case Study: DeCow Drain

Municipality: Municipality of Chatham-Kent

Drainage Superintendent: Blaise Chevalier

Partners: Rural Lambton Stewardship Network

Contractor: JT Wetland Development

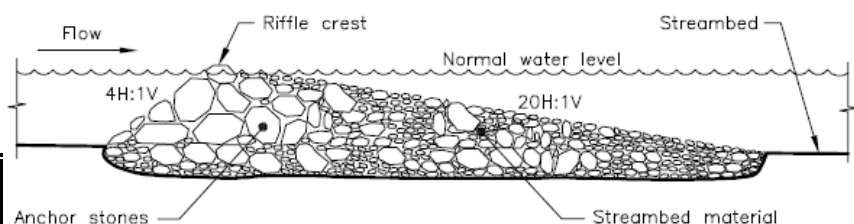
SCRCA Project Funding: \$6,000

Objective: Reduce erosion along a steep portion of the drain.

Best Management Practices: Riffles (3) and rock chute (1)

Project Summary

There was significant fall in this short section of drain and increased flow from a recent field tile installation that was causing a pit to form. By creating riffle pool structures, the water was slowed down, protecting the channel from erosion with the added benefits of giving sediment time to settle out and creating habitat. The project included the installation of a rock chute where overland flow entered the drain and 3 riffle structures in series along the steepest part of the watercourse. These riffles were constructed following Ontario Provincial Standard Drawing OPSD 222.050 for riffles on streambeds (diagram on the right).



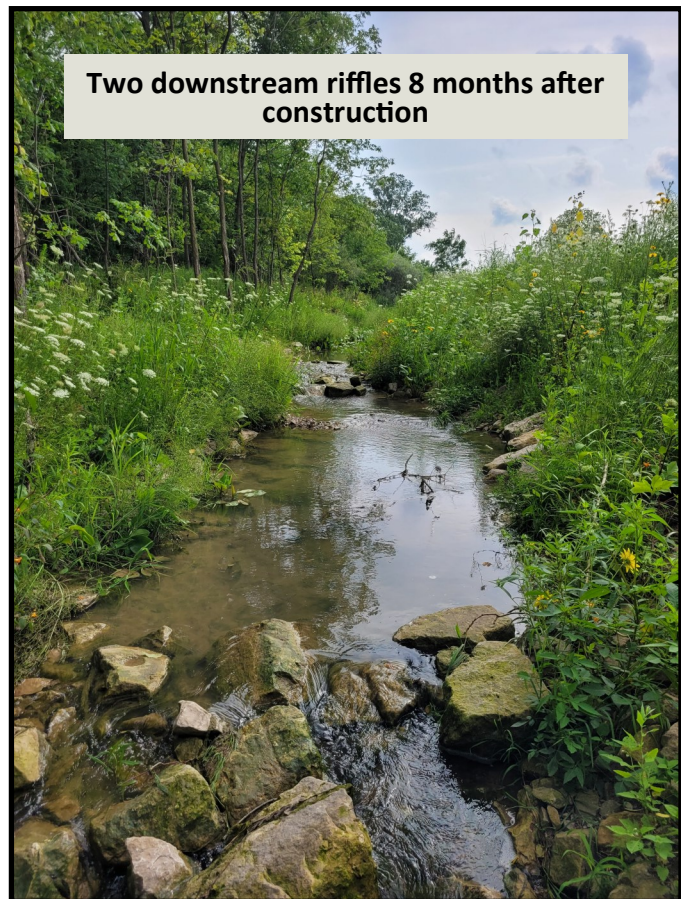
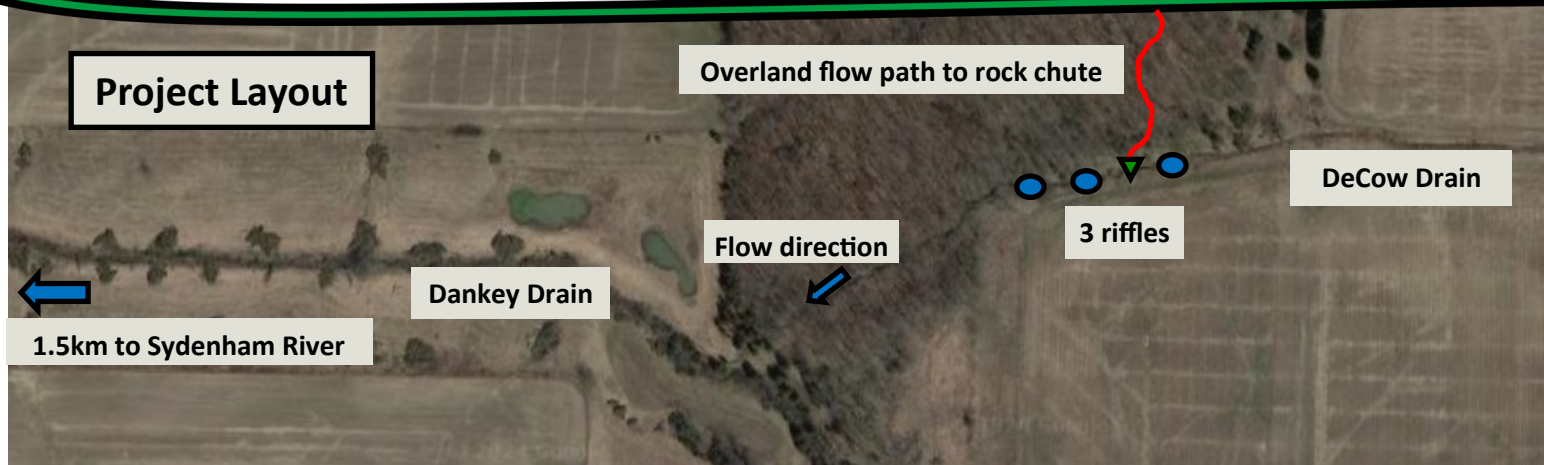
Pit on drain before project



Partially revegetated site 8 months after project completion



Case Study: DeCow Drain



If you are experiencing erosion concerns in a municipal drain on your property and are interested in implementing a Green Infrastructure project, please contact:

Sarah Snetsinger, Watershed Biologist
519-245-3710 x248
ssnetsinger@scrca.on.ca

