



## Board of Directors - Notice of Meeting

April 17, 2025

Time: 10:00 am

SCRCA Administration Office/Remote\*  
205 Millpond Cres., Strathroy

---

### Tentative Agenda

---

- |     |  |             |
|-----|--|-------------|
| 1.  | Land Acknowledgement                                     |             |
| 2.  | Chair's Remarks  |             |
| 3.  | Adoption of Agenda                                       |             |
| 4.  | Declaration of Pecuniary Interests                       |             |
| 5.  | Minutes  |             |
|     | 5.1 Minutes of the March 19, 2025 Board Meeting          | Pg. 6 - 16  |
| 6.  | Delegation   |             |
|     | 6.1 Lambton Cattlemen's Association on Community Pasture |             |
|     | (a) E-mail Request for Delegation                        | Pg. 17 - 18 |
|     | (b) Evaluation Workshop Report                           | Pg. 19 - 27 |
|     | (c) Map of Proposed Community Pasture Property           | Pg. 28      |
|     | (d) Support from St. Clair Township                      | Pg. 29      |
|     | (e) Plans, Assumptions and Projected Budgets 2025 – 2027 | Pg. 30 - 65 |
|     | (f) Infographics   | Pg. 66 - 69 |
|     | 6.2 Staff Report on Community Pasture                    | Pg. 70 - 72 |
| 7.  | Reports  |             |
|     | 7.1 Hearing Board  | Pg. 73 - 74 |
|     | 7.2 Conservation Ontario Report ( <i>Verbal</i> )        |             |
|     | 7.3 Direct Award of Agricultural Leases                  | Pg. 75      |
| 8.  | Consent Items  |             |
|     | 8.1 Acceptance of Information Items                      |             |
|     | (a) Business Arising                                     | Pg. 76      |
|     | (b) Current Watershed Conditions                         | Pg. 77 - 78 |
|     | (c) Regulations Activity Summary                         | Pg. 79 - 81 |
|     | (d) Planning Activity Summary                            | Pg. 82 - 84 |
|     | (e) Revenue and Expenditures                             | Pg. 85      |
|     | (f) Disbursements  | Pg. 86      |
|     | (g) General Levy Update                                  | Pg. 87      |
|     | (h) St. Clair River AOC                                  | Pg. 88 - 90 |
|     | (i) Communications Update                                | Pg. 91 - 94 |
|     | (j) Education Update                                     | Pg. 95 - 96 |
| 9.  | Director Correspondence                                  |             |
| 10. | In Camera (matters related to SCRCA-owned lands)         |             |
| 11. | New Business   |             |
| 12. | Adjournment  |             |

**NOTE:** The Thames-Sydenham and Region Source Protection Authority Meeting will take place immediately following. Please remain on Zoom (if applicable) after adjournment of this meeting.

**For the purpose of quorum and luncheon, RSVP is required. Please inform Ashley in advance if you will be absent OR if you will be attending via Zoom.**

*\*Please be advised that electronic participation is dependent upon the use of compatible equipment and consistent internet connection, which is outside of the control of SCRCA staff members. Meeting locations and available technology may hinder full participation of those joining remotely; therefore, it is strongly recommended that you attend meetings in person, where possible. Every effort will be made to accommodate those who cannot.*

**April 17, 2025**

**Disclaimer:** Board members, staff, guests and members of the public are advised that the SCRCA Special Meeting and Authority Board meetings are being video/audio recorded, and will be live streamed and posted to the Authority's Youtube channel along with the official written minutes. As such, comments and opinions expressed may be published and any comments expressed by individual Board members, guests and the general public are their own, and do not represent the opinions or comments of the Full Authority and/or the SCRCA Board of Directors. The recorded video of the Full Authority meeting is not considered the official record of that meeting. The official record of the Authority meeting shall consist solely of the Minutes approved by the Board of Directors.

### **Board of Directors Proposed Resolutions**

*(Roll call)*

**1. Land Acknowledgment**

**2. Chair's Remarks**

**3. Pecuniary Interests**

It is requested that each Director declare a conflict of interest at the appropriate time, on any item within this agenda in that a Director may have pecuniary interest.

**4. Adoption of Agenda**

**4.1 Moved by:** **Seconded by:**  
That the Board of Directors adopts the agenda for the meeting as presented.

**5. Minutes**

**5.1 Moved by:** **Seconded by:**  
That the minutes of the Board of Directors meeting, held March 19, 2025, be approved as distributed.

**6. Presentations**

**6.1 Moved by:** **Seconded by:**  
That the Board of Directors acknowledge the presentation delivered by representatives of the Lambton Cattlemen's Association regarding their initiative to create a community pasture

**6.2 Moved by: Seconded by:**  
 That the board of directors acknowledges the report dated March 31, 2025 regarding the proposed partnership with the Lambton Cattlemen’s Association in creating a community pasture and support the presented concept/model; and further, direct staff to continue discussions with the Lambton Cattlemen’s Association and bring back a proposed agreement to the Board.

**7. Reports**

**7.1 Moved by: Seconded by:**  
 That the Board of Directors acknowledge the report, dated April 7, 2025 regarding the establishment of a Hearing Board and nominate the following 9 Directors to the SCRCA Hearing Board for 2025, with the Chair and Vice Chair as ex-officio:

\_\_\_\_\_; \_\_\_\_\_; \_\_\_\_\_; \_\_\_\_\_; \_\_\_\_\_  
 \_\_\_\_\_; \_\_\_\_\_; \_\_\_\_\_; \_\_\_\_\_.

**7.2 Moved by: Seconded by:**  
 That the Board of Directors receive for information the verbal report concerning the April 14, 2025 Conservation Ontario Annual General Meeting.

**7.3 Moved by: Seconded by:**  
 That the Board of Directors acknowledges this report dated March 24, 2025 and further approves of direct awarding the agricultural leases for LC Henderson and Warwick Conservation Areas to agricultural tenants operating on neighbouring lands with direct access to Authority agricultural fields, provided a satisfactory rental agreement can be obtained.

**8. Informational Items**

**8.1 Moved by: Seconded by:**  
 That the Board of Directors approves the consent agenda and receives the accompanying items 8.1 (a) through 8.1 (j) as information.

**9. Correspondence**

**10. In-Camera**

**10.1 Moved by: Seconded by:**  
 That the Board of Directors go in-camera at \_\_\_ a.m./p.m. to discuss matters relating to SCRCA-owned land.

**10.2 Moved by: Seconded by:**  
 That the Board of Directors rise and report at \_\_\_ a.m./p.m.





## Board of Directors Meeting Minutes

Date: March 19, 2025      Time: 10:05 a.m.  
 East Lambton Community Complex (Upper Arena Hall)  
 61 Centennial Ave, Watford, ON N0M 2S0

---

**Directors Present:** John Brennan, Al Broad, Pat Brown, Chair; Terry Burrell, Greg Grimes, Sue Cates, Anne Marie Gillis, Aaron Hall, Frank Kennes, Adam Kilner, Don McCabe, Don McCallum, Steve Miller, Kristen Rodrigues, Ian Veen

**Directors Remote:** Rhonda Jubenville, Lorie Scott, Vice-Chair

**Directors Regrets:** Betty Ann MacKinnon, Ross O'Hara, Jerry Westgate

**Staff Present:** Donna Blue, Manager of Communications; Emily De Cloet, Interim Flood Forecasting and Warning Coordinator; Melissa Deisley, Director of Planning and Regulations; Chris Durand, Manager of IT and GIS; Emily Febrey, Communication and Outreach Specialist; Ashley Fletcher, Administrative Assistant and Board Coordinator; Kate Jamieson, Payroll/Accounting Clerk; Chunng Li, Director of Corporate Services; Mike Moroney, RAP Coordinator; Craig Paterson, Manager of Biology; Tim Payne, Manager of Forestry; Ken Phillips, General Manager; Alison Seidler, GIS Specialist; Jeff Sharp, Conservation Services Technician; Kelli Smith, Lands Technician; Meagan Weber, Regulations Officer; Greg Wilcox, Manager of Lands;

**Guests:** Jeff Agar, Township of St. Clair Mayor; Lindsay Buchanan, Ontario NativeScape/Rural Lambton Stewardship Network; Todd Case, Township of Warwick Mayor; Angela Coleman, Conservation Ontario; Ian Forster, Plains Midstream; Holly Foster, Township of St. Clair; Tracey Kingston; Kevin Marriott, Lambton County Warden; Dave Marsh, Municipality of Lambton Shores; Netty McEwen, Municipality of Chatham-Kent; Anne McGugan; Don McGugan; Ray Mile, MNP Chartered Professional Accountants LLP; Mark Peacock, Lower Thames Valley Conservation Authority; Stevi Reiley, Bkejwanong Eco-Keepers (BEK); Montana Riley, BEK; Lynn Rosales, Aamjiwnaang First Nation; Shauntelle Sandrin, Sarnia Lambton Chamber of Commerce; Edward Soldo, Municipality of Chatham-Kent; Mike Stark, St. Clair Region Conservation Foundation; Brian White, City of Sarnia; Naomi Williams, BEK.

### 1. Land Acknowledgement

A land acknowledgment was read by General Manager, Ken Phillips which recognized the St. Clair Region Conservation Authority watershed as part of the traditional territories of the Anishinaabeg, Haudenosaunee, Lūnaapéewak and Chonnonton Nations, who have a sacred responsibility to preserve the land and water of southwestern Ontario. Also acknowledged are the Treaties that allow the SCRCA to work alongside the First Nation

Communities of Kettle and Stony Point, Aamjiwnaang and Bkejwanong to ensure we share the responsibility of preserving the land and water.

## 2. Call to Order and Chair's Remarks

The meeting was called to order by the Chair, Pat Brown, who on behalf of the directors and staff of the Conservation Authority, welcomed everyone to the annual meeting and went on to highlight some of the Conservation Authority's achievements this past year.

### 2024 Highlights:

- As prescribed under new regulations issued through the *Conservation Authorities Act*, the Authority released the Conservation Lands Strategy and Watershed-based Resource Management Strategy, which provide guidance, objectives, and direction for decision making as it pertains to Authority property, services, and programs.
- The Conservation Education program continued to be a popular choice among teachers and students alike, with over 12,000 students engaged throughout the watershed this past year.
- In collaboration with the City of Sarnia and Township of St. Clair, shoreline protection work continued along the St. Clair River and Lake Huron, to protect shorelines from erosion with the addition of 600 metres of armour stone revetments.
- Through the Healthy Watersheds and tree planting programs, the Authority continued to provide both technical and financial support to local landowners interested in implementing projects on their properties – over 71,000 trees were planted, and 76 stewardship projects were completed throughout our region.
- The Planning and Regulations team supported safe and resilient development throughout the watershed by issuing over 300 permits and providing comments on close to 200 *Planning Act* applications.
- Authority campgrounds were fully booked in 2025 and a generous donation of over \$172,000 from the Judith and Norman Alix Foundation supported trail and playground improvements at the Wawanosh Wetland and Warwick Conservation areas. This included the installation of a natural playground for visitors enjoy this upcoming camping season.
- The year ended with a historical investment made by the Canada Water Agency that will see close to 8 million dollars invested into the Authority over the next four years to help in the fight against algal blooms in Lake Erie. This funding allowed the Authority to launch the Sydenham Phosphorus Reduction Initiative (commonly referred to as SPRI) – a program aimed at reducing the loading of phosphorus in the Sydenham River, and ultimately, Lake Erie.

## 3. Introduction of Guests

The Chair thanked our Board of Directors and staff for their hard work and dedication to

the Authority and acknowledged the partners, whose support and collaborations help realize our vision of a healthy and sustainable natural environment in the St. Clair Region.

Special guests were introduced and the following collaborators and partners in attendance were recognized:

- Walpole Island Heritage Centre and members of local Indigenous communities
- Lambton County
- Council members and staff from several of our member municipalities
- Conservation Ontario
- Lower Thames Valley Conservation Authority
- Upper Thames River Conservation Authority
- St. Clair Region Conservation Foundation
- Sarnia Lambton Chamber of Commerce
- Rural Lambton Stewardship Network
- Plains Midstream Canada

His Worship Lambton County Warden and Mayor of the Township of Enniskillen, Kevin Marriott brought greetings and expressed appreciation of the collaborative efforts of the SCRCA on various initiatives and projects.

Director Ian Veen, representing the Oil Springs/Enniskillen Township was welcomed to the Board of Directors and Mary Lynn McCallum was thanked for her dedicated service during her term on the Board.

#### **4. Declaration of Pecuniary Interests**

The Chair requested that each Director declare a conflict of interest at the appropriate time, on any item within this agenda in that a Director may have pecuniary interest.

#### **5. Approval of the Agenda**

**BD-25-01**

**Gillis – Brennan**

**“That the agenda for the Annual General Meeting be adopted.”**

**CARRIED**

#### **6. Minutes**

##### **6.1 Board of Directors December 12, 2024 Minutes**

**BD-25-02**

**Grimes – Burrell**

**“That the minutes of the Board of Directors meeting, held December 12, 2024, be approved as distributed.”**

**CARRIED**

## **6.2 Executive Committee February 13, 2025 Minutes**

**BD-25-03**

**Burrell – Miller**

**“That the minutes of the Executive Committee meeting held February 13, 2025, be approved as distributed.”**

**CARRIED**

## **7. Chair and Conservation Ontario Report**

### **Verbal Report:**

The General Manager attended a Conservation Ontario (CO) Council meeting on December 9, 2024. Topics discussed include:

- Insurance market and possible rate reductions
- Updates to CO Hearing Guidelines
- Upcoming changes to Conservation Authorities Act which will necessitate changes to CA administrative by-laws
- Updates to the framework for ministerial appeals. Updates to working include the notion that decisions may be made as per the benefit to Provincial interest

**BD-25-04**

**Hall – Burrell**

**“That the Board of Directors receive for information, a verbal report on the Conservation Ontario Council meeting, held remotely on December 9, 2024.”**

**CARRIED**

## **8. Audited Financial Statements**

**BD-25-05**

**Kennes – Burrell**

**“That the St. Clair Region Conservation Authority accepts the recommendation of the Executive Committee and report from the Authority’s auditors, MNP Chartered Professional Accountants LLP, and further approves the 2024 Audited Financial Statements.”**

**CARRIED**

## 9. Conservation Awards

Vice Chair Lorie Scott presented the following Conservation Awards:

### **Bkejwanong Eco-Keepers**

Bkejwanong Eco-Keepers (BEK) is an environmental and conservation initiative operated by the Walpole Island First Nation Heritage Centre/Nin.da.waab.jig. The program is open to the youth of Walpole Island First Nation to thrive and reclaim their Anishinaabe roles as caretakers of the earth.

The program provides opportunities for youth to engage in cultural and environmental programs which helps them learn about their cultural heritage and empowers them to promote positive change and relationships within the Walpole Island community and beyond.

Through the partnership established between the SCRCA and the Healthy Headwaters Lab at the University of Windsor, Authority staff have had the opportunity to engage with the youth participating in the BEK program. Hands-on, days in the field have been organized to introduce participants to the different techniques and protocols implemented by the SCRCA to monitor aquatic health. More importantly, the engagement with BEK youth provided the opportunity to exchange western and Indigenous knowledge, helping to further build the Authority's relationship with the Bkejwanong community in our commitment towards Truth and Reconciliation.

### **Plains Midstream Canada**

Since 2019, Plains Midstream Canada (PMC) has provided financial support to the St. Clair Region Conservation Authority's Conservation Education Program to deliver the Spring Water Awareness Program (SWAP) at schools throughout the watershed.

Delivered annually in the spring, the SWAP program teaches students about the potentially dangerous conditions associated with streams and rivers during the spring and provides them with safety guidelines. The program focuses on hazards associated with cold, deep, and fast-flowing waters and engages students through age-appropriate and curriculum-connected experiments, activities, and games. Since 2019, PMC has provided \$35,000 to allow the SCRCA to deliver this important program free-of-charge to over 5,500 students.

In addition to PMC's financial support, every year PMC staff have participated in the school sessions and during the COVID-19 pandemic, supported the SCRCA's need to shift to online and schoolyard delivery of the program without hesitation.

Financial support from companies like PMC, helps remove financial barriers that schools may be experiencing and allows the SCRCA to reach students with important health and

safety messages like those discussed during the SWAP program. At present, PMC has committed to fund the program up until 2025, constituting seven years of support, and certainly deserving of recognition by the Authority with a Conservation Award.

The board of Directors congratulated the 2025 Conservation Award Winners and thanked them for their contributions to conservation.

## **10. Service Awards**

**The following service awards were presented:**

### **Five Years of Service**

- Anne Marie Gillis
- Aaron Hall
- Kris Clark
- Alex Cybulski
- Mike Moroney
- Meagan Weber
- Craig Paterson

### **Ten Years of Service**

- Al Broad

### **Twenty Years of Service**

- Terry Burrell
- Alison Seidler

### **BD-25-06**

#### **Miller – Cates**

**“That the Board of Directors acknowledges the service awards presented to the directors and staff and further that they be thanked for their years of dedicated service.”**

**CARRIED**

A short recess was called following the conclusion of 2024 business.

The meeting resumed at 11:02 a.m. to conduct 2025 business. Brian White, 2025 Director representing the City of Sarnia was welcomed to the table and Anne Marie Gillis was thanked for her dedicated service during her term on the Board of Directors.

## 11. Code of Conduct

**BD-25-07**

**Miller – Kennes**

**“That the Board of Directors acknowledges and complies with the St. Clair Region Conservation Authority’s Code of Conduct and Administrative By-laws, updated in 2024.”**

**CARRIED**

## 12. Election of Officers

**BD-25-08**

**Veen – Hall**

**“That Ken Phillips be appointed chair for the election of the 2025 Chair and Vice Chair.”**

**CARRIED**

**BD-25-09**

**Kennes – Kilner**

**“That Tim Payne and Donna Blue be appointed scrutineers in the event of an election.”**

**CARRIED**

### 12.1 Position of Chair

The positions of Chair and Vice Chair were declared vacant and nominations were called for the office of Chairperson for 2025.

Kristin Rodrigues nominated Greg Grimes for the position of Chair.

Greg Grimes confirmed his willingness to stand for the position of Chair.

Greg Grimes was declared Chair of the St. Clair Region Conservation Authority for 2025, by acclamation, and addressed the Board of Directors.

**BD-25-10**

**Cates – Kilner**

**“That the nominations for the position of Chair be closed.”**

**CARRIED**

### 12.2 Position of Vice Chair

Steve Miller nominated Pat Brown for the position of Vice Chair.

Greg Grimes nominated Kristen Rodrigues for the position of Vice Chair.

Both Pat Brown and Kristen Rodrigues confirmed their willingness to stand for the position of Vice Chair.

Kristen Rodrigues was declared Vice Chair of the St. Clair Region Conservation Authority for 2025, by majority vote, and addressed the Board of Directors.

**BD-25-11**

**Hal – Kennes**

**“That nominations for the position of Vice Chair be closed.”**

**CARRIED**

**BD-25-12**

**White – Kilner**

**“That the ballots be destroyed”**

**CARRIED**

**13. Committees**

One vacancy was declared on the Executive Committee due to the election of Kristen Rodrigues as Vice Chair. Nominations were requested from the floor to complete memberships.

Terry Burrell nominated Pat Brown to serve on the Executive Committee.

**BD-25-13**

**Rodrigues – Veen**

**“That the St. Clair Region Conservation Authority adopts the 2024 Nominating Committee's Report, as amended, fulfilling the SCRCA committee needs in 2025.”**

**CARRIED**

**14. Authorization to Borrow**

**BD-25-14**

**Kennes – Kilner**

**“That the Authority Chair or the Vice-Chair and the General Manager/Secretary-Treasurer or Director of Corporate Services be authorized to borrow from the Libro Credit Union, Strathroy for the general operations and capital program of the Authority, a sum not to exceed \$2,400,000 to be repaid from grants received from the Province of Ontario, Government of Canada, levies assessed to the member municipalities and general revenue.”**

**CARRIED**

**15. Appointments to Conservation Ontario Council**

**BD-25-15**

**Miller – Kilner**

**“That the Authority's 2025 representative to Conservation Ontario will be the Authority Chair, the Vice-Chair will be the first alternate and the General Manager be the second alternate.”**

**CARRIED**

**16. Presentation**

**BD-25-16**

**Veen – Rodrigues**

**“That the Board of Directors receive for information the presentation provided by General Manager of Conservation Ontario, Ms. Angela Coleman and further that she be thanked for her attendance at today’s meeting.”**

**CARRIED**

**17. Reports**

**17.1 General Manager’s Report**

**BD-25-17**

**Cates – Kennes**

**“That the Board of Directors acknowledges the General Manager’s report dated March 11, 2025.”**

**CARRIED**

**17.2 Disposal of Assets**

**BD-25-18**

**Brown – Cates**

**“That the Board of Directors acknowledge the report dated March 12, 2025 regarding the disposal of assets and further, approve the disposal of the 2014 Chevrolet Silverado (Fleet Vehicle #12) from the SCRCA fleet inventory.”**

**CARRIED**

**17.3 Hearing Board**

**BD-25-19****Rodrigues – Veen**

**“That the Board of Directors acknowledge the report dated March 11, 2025 regarding the establishment of a dedicated Hearing Board; And that the Board of Directors establish a Hearing Board of 5 individuals and 2 alternates, with meeting dates set quarterly, to deal with appeals under Section 28 of the Conservation Authorities Act; And further, that the General Manager be appointed the designated official to conduct the administrative review in accordance with s.8 Ontario Regulation 41/24.”**

**DEFEATED****BD-25-20****Kennes – McCabe**

**“That the Board of Directors acknowledge the report dated March 11, 2025 regarding the establishment of a dedicated Hearing Board; And that the Board of Directors establish a Hearing Board of 11 individuals, with meeting dates set quarterly, to deal with appeals under Section 28 of the Conservation Authorities Act; And further, that the General Manager be appointed the designated official to conduct the administrative review in accordance with s.8 Ontario Regulation 41/24.”**

**CARRIED****17.4 Fee Appeal****BD-25-21****Miller - Rodrigues**

**“That the Board of Directors acknowledges the report dated February 24, 2025 regarding a request for appeal of fees, for a reduction in costs regarding 4852 Forsyth Trail, Plympton-Wyoming, and further that the fee appeal be denied.**

**CARRIED****18. Consent Agenda****BD-25-22****Hall – Brennan**

**“That the Board of Directors approves the consent agenda and endorses the recommendations accompanying Items 18.1 a - 18.1 j.”**

**CARRIED****19. Correspondence (none)****20. In-Camera**

**BD-25-23**

**Veen – White**

**“That the Board of Directors move in-camera at 12:44 a.m. a.m./p.m. to discuss property and legal matters with only the General Manager, Board Coordinator, Manager of Forestry, Lands Technician and Director of Planning and Regulations remaining present.”**

**CARRIED**

**BD-25-24**

**Kennes – Rodrigues**

**“That the Board of Directors rise and report at 12:55 p.m.”**

**CARRIED**

**21. Under New Business**

**22. Adjournment**

**BD-25-25**

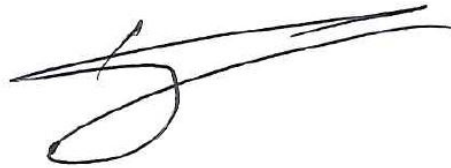
**Cates – Brennan**

**“That the meeting be adjourned.”**

**CARRIED**

---

**Chair**



---

**Ken Phillips  
General Manager**

**From:** [Chad Anderson](#)  
**To:** [Ashley Fletcher](#)  
**Subject:** Fwd: community pasture update  
**Date:** Thursday, March 13, 2025 4:30:34 PM  
**Attachments:** [image002.png](#)

---

You don't often get email from yourfourthman@gmail.com. [Learn why this is important](#)

Hello Ashley,

Can you please book us a spot at the April 17th board meeting. We as the Lambton Cattlemen's Association would like to make a short presentation about a community pasture we have been working on with Kelli Smith for lands in south Lambton.

Thank-you

Chad

----- Forwarded message -----

**From:** **Tim Payne** <[tpayne@scrca.on.ca](mailto:tpayne@scrca.on.ca)>  
**Date:** Thu, 13 Mar 2025 at 14:16  
**Subject:** RE: community pasture update  
**To:** Chad Anderson <[yourfourthman@gmail.com](mailto:yourfourthman@gmail.com)>, Kelli Smith <[ksmith@scrca.on.ca](mailto:ksmith@scrca.on.ca)>  
**Cc:** Shane White <[swhite@scrca.on.ca](mailto:swhite@scrca.on.ca)>, Murray and Sandi Shaw <[bear.creek.farm@hotmail.com](mailto:bear.creek.farm@hotmail.com)>, [ralph@eyrefarms.ca](mailto:ralph@eyrefarms.ca) <[ralph@eyrefarms.ca](mailto:ralph@eyrefarms.ca)>, Blair <[ridgeviewshorthorns@hotmail.com](mailto:ridgeviewshorthorns@hotmail.com)>

Chad, when Kelli is back, please touch base with her about the proposals. As well for the April 17<sup>th</sup> Board meeting you will need to send a quick email to Ashley Fletcher requesting a delegation to speak to the Board regarding a proposed partnership for land rental. I believe you will be given 10 minutes to speak to the board. Ashley will send you information.

Your information package is due to Ashley by March 27th.

Ashely's email is [afletcher@scrca.on.ca](mailto:afletcher@scrca.on.ca)

Thanks,

**Tim Payne R.P.F.**

**Manager of Forestry**

St. Clair Region Conservation Authority

205 Mill Pond Cres., Strathroy, ON N7G 3P9

Tel: 519-245-3710 ext. 224

Fax: 519-245-3348

Website: [www.scrca.on.ca](http://www.scrca.on.ca)



*“Working Together for a Healthy Environment”*

---

**From:** Chad Anderson <[yourfourthman@gmail.com](mailto:yourfourthman@gmail.com)>  
**Sent:** March 13, 2025 11:56 AM  
**To:** Kelli Smith <[ksmith@scrca.on.ca](mailto:ksmith@scrca.on.ca)>  
**Cc:** Tim Payne <[tpayne@scrca.on.ca](mailto:tpayne@scrca.on.ca)>; Shane White <[swhite@scrca.on.ca](mailto:swhite@scrca.on.ca)>; Murray and Sandi Shaw <[bear.creek.farm@hotmail.com](mailto:bear.creek.farm@hotmail.com)>; [ralph@eyrefarms.ca](mailto:ralph@eyrefarms.ca); Blair <[ridgeviewshorthorns@hotmail.com](mailto:ridgeviewshorthorns@hotmail.com)>  
**Subject:** community pasture update

Hello Kelli, two things

1> Attached are two different scenarios, plan 1 is with the parcels that were suggested at our last meeting and plan 2 includes the parcel along Stanley Line. As in my earlier email, we realized early in the business planning stages that the smaller acreage was going to have some challenge, with the smaller project we just can't stock it at a feasible level to be economically sustainable. With the second plan we can make things work better because we have the economies of scale in our favor, we would like to present the second plan to the CA board.

2> Just to confirm deadlines, you need our package by Friday April 4 so the board has enough time to review for our presentation on April 17 correct?

Thanks much

Chad

Anderson Agronomy Services

519-331-0526

[yourfourthman@gmail.com](mailto:yourfourthman@gmail.com)



# **Potential for a Community Pasture in Lambton**

**Evaluation Workshop February 12, 2025**



**BRYAN BOYLE & ASSOCIATES**  
FACILITATING YOUR FUTURE

**Potential for a Community Pasture in Lambton**  
**Evaluation Workshop on February 12, 2025**  
**Facilitated by Bryan Boyle**

## **Purpose of Workshop**

To evaluate the potential for a community pasture in Lambton

*\*Note 1: Throughout this report whenever two or more participants or discussion groups offered the same or very similar comments they are noted with an “x” and the number, i.e. (x3).*

## **First Impressions**

Participants were asked to share the first one or two words that come to mind when they hear, “a community pasture in Lambton”.

### Real Opportunity

- Opportunity (x3)
- Good news
- Savings
- Showcases beef
- Great public relations
- Ideal land use
- Teamwork

### Grass

- More grass for grazing (x2)
- Green grass

### Growth of Herds

- Growing herds
- Growth
- Expansion

### Infrastructure Needed

- Fencing (x2)
- Water source

### Management

- Management
- Group management
- Mixing of cattle
- Tracking cattle
- Regulations

### Animals on Pasture

- More cows and heifers
- Heifers

### Costs

- Costs per head or per acre

## **Merits that Exist for a Community Pasture in Lambton**

These may be strengths:

Any factors or conditions that are considered positive and over which we have some control, e.g. skills, expertise, involvement, facilities, etc.

They may be opportunities:

Any factors or conditions that are considered positive, over which we have little or no control but may be seized by ourselves or others, e.g. demographics, location, funding, etc.

Participants identified many merits which were grouped into general themes. Participants prioritized the merits based on which ones were most important on which to build.

<b>Rank</b>	<b>Merits</b>	<b>Score</b>
<b>1<sup>st</sup></b>	Opportunity for Young Farmers	485
<b>2<sup>nd</sup></b>	Herd Expansion	400
<b>3<sup>rd</sup> Tie</b>	Land Stewardship	320
<b>3<sup>rd</sup> Tie</b>	Improved Land Use	320
<b>5<sup>th</sup></b>	Producer Engagement	310
<b>6<sup>th</sup></b>	Positive Economics	255
<b>7<sup>th</sup></b>	Technology Transfer	110

The individual merits used to generate the themes on the table above are shown below.

1. Opportunity for Young Farmers

- Access to entry level startup for younger farmers
- Opportunity for young farmers to earn money
- Good for young or new producers

2. Herd Expansion

- Herd growth and expansion
- Expansion opportunity
- More cattle in Lambton

3. Land Stewardship

- Good for the environment
- Pasturing is the best thing for that land
- Great example of land stewardship
- Perennials capture carbon credits

4. Improved Land Use

- Ideal utilization of marginal land (x2)
- Effective utilization of land
- Very limited pasture is available in some areas
- Divert land back from cash croppers

5. Producer Engagement

- Developing a producer network
- Risk shared among producers
- Sharing experiences

6. Positive Economics

- Low-cost feed
- Controlling costs on a well-managed pasture
- Utilizing fencing grants

7. Technology Transfer

- Potential to do test pasture plots
- Emphasize forage selection
- Could be a technology showcase and demonstration area
- Engage in new technology, e.g. less fencing

## Challenges that Exist for a Community Pasture in Lambton

These may be weaknesses:

Any factors or conditions that are considered negative and over which we have some control, e.g. inactivity, lack of direction, lack of stakeholder support, etc.

These may be threats:

Any factors or conditions that could negatively impact us, over which we have little or no control, e.g. political climate, community or provincial conditions, etc.

Participants identified various challenges, which were grouped into general themes. Participants prioritized the challenges based on which ones were most critical to address.

Rank	Challenges	Score
1 <sup>st</sup>	Infrastructure	590
2 <sup>nd</sup> Tie	Management	405
2 <sup>nd</sup> Tie	Costs	405
4 <sup>th</sup>	Administration and Communication	290
5 <sup>th</sup>	Water Supply	265
6 <sup>th</sup>	Biosecurity	225

The individual challenges used to generate the themes in the table above are noted below.

### 1. Infrastructure

- Effective fences (x2)
- Handling systems (x2)
- Fencing off the river
- Infrastructure costs

### 2. Management

- Dealing with drought or lack of grass
- Grass management
- Supplemental feeding
- If breeding animals are involved, what genetics are used
- Who decides who can put cattle on pasture
- Lambton only producers

- Who manages the pasture
- How often are cattle checked

### 3. Costs

- Operation, upkeep, and farm manager cost (x2)
- Upfront costs of establishment
- Land lease costs
- Economics

### 4. Administration and Communication

- Generating awareness since community pasture is a bit of an unknown
- Cooperation and communication between farmers
- Working with St. Clair Conservation Authority
- How to determine who gets to participate
- Choosing cow-calf versus stockers for the pasture
- Consistency of number of cattle, year to year
- Lease tenure
- Zoning regulations

### 5. Water Supply

- Reliable water supply (x2)
- Power required to ensure sufficient drinking water

### 6. Biosecurity

- Dangers of co-mingling cattle
- Health status and biosecurity risks
- Requirement for excellent identification, including dealing with lost tags
- Impact of hunters

## **Key Areas of Focus**

There are many actions that could help to ensure that a potential community pasture could be established in Lambton. These actions should build on the merits, reduce or eliminate the challenges, and all the while keep in mind the points made by Don Hargrave, President of Ontario Association of Community Pastures in his presentation.

Participants identified and grouped these actions into Areas of Focus and prioritized them using the following method. Each participant was given 100 points. They were asked to allocate their points to several Areas of Focus to show their relative importance. They based their allocation on where action would have the most positive impact on establishing a potential community pasture in Lambton.

Rank	Areas of Focus	Total Score
1 <sup>st</sup> Tie	Seek Financial Support	605
1 <sup>st</sup> Tie	Secure Infrastructure	605
3 <sup>rd</sup>	Engage Producers	445
4 <sup>th</sup>	Hire a Manager	385
5 <sup>th</sup>	Establish Herd Health Protocols	370

## Specific Actions that Created Areas of Focus

The actions identified by the participants that were grouped and prioritized to create the Areas of Focus table above are listed below:

### 1. Seek Financial Support

- Identify grant and funding opportunities (x2)
- Lobby for provincial support
- Apply for government grants to offset the cost
- Apply for Alternate Land Use Services (ALUS) funding
- Lobby for St. Clair Township support for water and fencing
- Apply for fencing grants
- Determine and research producer costs and different types of cattle

### 2. Secure Infrastructure

- Get quotes on fencing, water and handling systems (x2)
- Locate or rent portable handling system
- Install watering system using municipal water
- Study different infrastructure systems
- Post no hunting signs
- Remove cattle before the fall deer hunt starts

### 3. Engage Producers

- Create community pasture Board and constitution with policy and health protocols (x2)
- Pick dynamic leadership
- Develop our business plan
- Poll and promote to interested people under age 40
- Maintain a percentage of young farmers
- Promote through Beef Farmers of Ontario Youth Alliance
- Increase Lambton participation
- Determine the membership costs and capital required

**4. Hire a Manager**

- Do a comprehensive search to find a pasture manager
- Hire a manager
- Hire person to maintain fences and water daily and weekly

**5. Establish Protocols**

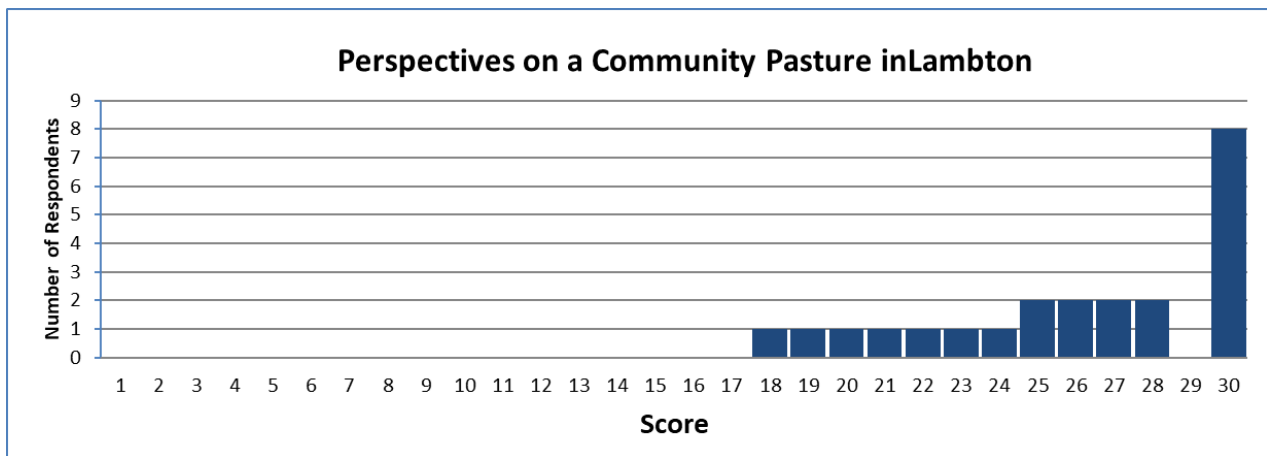
- Establish herd health protocols
- Develop a pasture design, e.g., grass species, livestock type, fence style
- Graze bred heifers or cow-calf pairs
- Seed down the potential pasture land

**Current Perceptions**

At the end of the workshop, after considering all the discussion, members chose the number on a scale numbered from 1 to 30 that most accurately describes their perspective on the potential for a community pasture in Lambton.

#30 = “Top of Our Game”: This is an excellent idea that could be of real value to Lambton County beef farmers. We should progress with this project immediately.

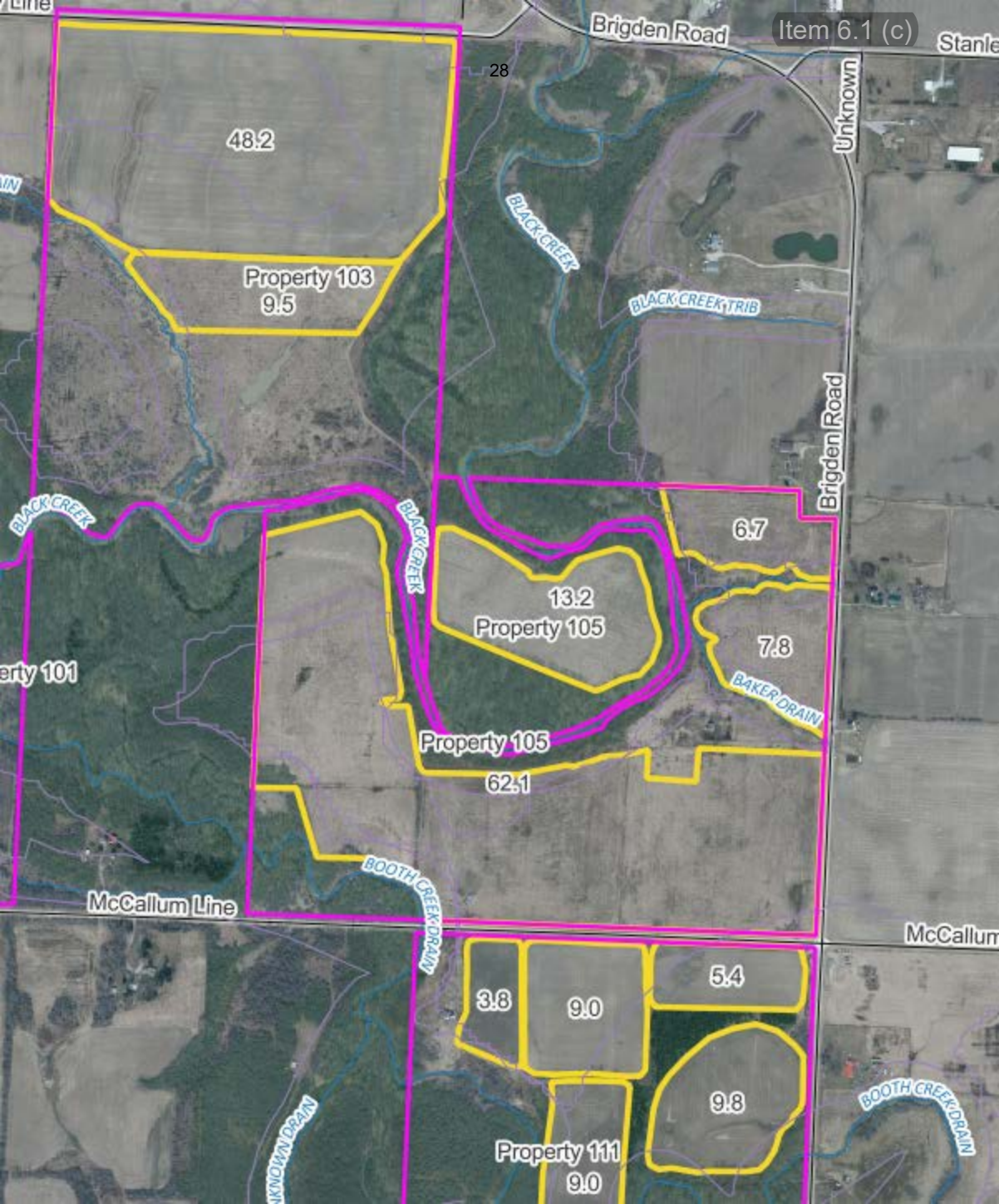
#1 = “Dead in the Water”: This is an unrealistic and ill-conceived idea that would be of limited value to Lambton County beef farmers. We should cease any activity on this project immediately.



**Average = 26.04**

## Summary of the Workshop

The workshop with stakeholders from the Lambton beef community was a very productive activity. The participants were very engaged and committed to the process. Those present took an important step by providing valuable input to help evaluate the potential for a community pasture in Lambton.





---

St. Clair Civic Centre 1155 Emily Street, Mooretown, Ontario N0N 1M0  
Phone 519-867-2021 • www.stclairtownship.ca

---

March 26, 2025

Lambton Cattlemen's Association  
c/o Ralph Eyre

**Re: Lambton St. Clair Community Pilot Pasture Project**

During their regular meeting on Monday March 17, 2025, Council for the Township of St. Clair considered the request to support a collaboration between the Lambton Cattlemen's Association and the St. Clair Region Conservation Authority that will help sustain beef production in Southwestern Ontario, and passed the following motion:

***Motion 3*** - *Be it resolved that the Township endorse and support the concept for a Community Pasture within St. Clair Township to be facilitated by the St. Clair Region Conservation Authority.*  
**CARRIED.**

Please contact the undersigned should you have any questions or concerns.

Kindest Regards,

A handwritten signature in blue ink, appearing to read "Jeff Baranek", is written over a horizontal line.

Jeff Baranek, RPP  
Clerk



**Lambton Community Pasture – 2025**  
**177 acres, 8.3 forage**

**ASSUMPTIONS** MADE IN PREPARATION OF THE PROJECTIONS AND CASHFLOW PLANS

---

The enclosed **draft** projections were prepared for the Fiscal year-end December 31, 2025-2027 - by the Committee and will be the basis for the case support for the Community Pasture project and used for the preparation of quarterly, annual information reports.

Pastureland is an integral part of Ontario agriculture, using the land for both animal grazing and harvesting forages. Well-managed pastures can improve soil health and biodiversity. Converting marginal lands into forage based, grazing lands, building infrastructure to promote herd expansion, opportunity for new startup farmers, young farmers, and commingling cattle on a shared cost per head.

Priority goals of this committee are to set out a framework for a nonprofit governance organization, propose a format for the Board of Directors and build a business plan to prioritize and outline path forward to sustainability.

Board of Directors: Six members would consist

- (3) appointed from the Lambton Cattlemen's Association
- (2) appointed from the ST Clair Conservation Authority
  - Land Specialists
  - Municipal of St Clair Township
- (1) Pasture Patron
- (1) Secretary Treasurer

Source Grant Funding/Applications: Upon approval of project with St Clair Conservation Authority and acceptance in the OACP - Ontario Association of Community Pasture

Lambton Cattlemen's Association  
Beef farmers of Ontario  
Ontario Forage Council  
SLEP – Lambton community relations, corporate sponsorship program

Model: 177 acres of pasture, 8.3 acres of forage for dry hay sales. This model delivers more viable growth and diversity of the vision for sustainable community pasture lands in Lambton County. Density with 115 head, 50 replacement heifers and 65 cow calf pairs, 5.2K lb of forage, lease costs, operation costs and amortization 15yr of capital infrastructure delivers growth and sustainable benchmark expectations to the vision and purpose of the Committee's , Lambton Community Pasture – 2025 Project

Therefore, the assumption, planning laid out is for the support and development of Scenario two:

**Yr1** – startup (2025)

- Late fall, fence area 105 approximate 77 acres
- Ground preparation, fertilize, Seed Stanley line 40 acres
- Define board structure, governance, roles and responsibilities

**Yr2** – Continued build infrastructure (2026)

- fence area 111 approximately 37 acres

Lambton Community Pasture Project (2025)

fence Stanley line approximately 40 & 9.5 acres  
 fence area 111 (flats) approximate 13.2 acres  
 installing water system  
     area 105  
     area 105 (flats)  
     shared system between areas to be pastured  
 seed area 111 approximately 45 acres  
 fertilize pastures, over seed for growth  
 introduce 15 replacement heifers  
 introduce 50 cow/calf pairs

**Yr3** – full year of operations as all areas established, fenced, water  
 Full cycle rotational grazing May01-October31  
 Introducing 50 replacement heifers  
 Introducing 65 cow/calf pairs

### **Revenue:**

Yr1 – no revenue – startup period, build infrastructure  
 Yr2 – 15 Replacement Heifers, 50 Cow/calf pairs (May01-Oct31)  
 Yr3 – 50 Replacement Heifers, 65 Cow/calf pairs (May01-Oct31)

### **OPERATING EXPENSES:**

Yr1 – minor startup costs, securing funding programs, coordinate fencing as outlined, admin costs  
 Yr2 – admin costs, lease, insurance, herd management, infrastructure projects as outlined  
 Yr3 – admin costs, lease, insurance, herd management

### **FINANCING:**

- TBD

### **CAPITAL PURCHASES:**

- Fencing projects \$170K
- Water systems \$6K
- Seeding, ground preparation \$20,293

**Community Pasture - Lambton( 2025)**

Statement of Financial Position

As At **December 31, 2025**

Comments2025

<b>Assets:</b>	<b>2025</b>	
<b>Current:</b>		
Cash, Cash Equivalents, Seed funds (LCM)	\$0	
Grant Programs - awards	\$0	
Short Term Investments	\$0	
Accounts Receivable	\$0	
Prepaid(s)	\$0	
Sundry Receivable	\$0	
<b>Total Current Assets</b>	<b>\$0</b>	
Fixed Assets - (planned)	\$102,335	fencing area 105 77ac @ \$1,238/ac
Investments		seed Stanly line 45 AC
	<b>\$102,335</b>	
<b>Total Assets</b>	<b>\$102,335</b>	
	<b>2025</b>	
<b>Liabilities and Net Assets</b>		
<b>Current:</b>		
Bank OD	\$25,146	\$5K-partial remit of AP
Accounts Payable - Cdn	\$75,866	identify funding need
Payroll Liabilites (pending discussion)	\$0	of \$100K yr1
H.S.T Payable	-\$1,193	
Accrued Payable(s)	\$0	
Term Funds		
<b>Total Current Liabilities</b>	<b>\$99,819</b>	
Long-term Liabilities		
Term Funds		
<b>Total Liabilities</b>	<b>\$99,819</b>	
<b>Net Assets</b>		
	Prior	\$0
	Current	\$2,516
Unrestricted	\$2,516	positive due to
		seed funds from LCA
<b>Total Net Assets</b>	<b>\$2,516</b>	\$5K & cap exp ovr 15yr
<b>Total Liabilities and Net Assets</b>	<b>\$102,335</b>	

**Community Pasture - Lambton( 2025)**

Statement of Activities

Period Ended: **December 31, 2025**

	<u>2025</u>
<b>Support:</b>	
Contribution	
Grants	\$5,000
In-Kind Donations	seed funds from LCA
Special Events:	\$0
Revenue, Less cost of Direct	\$0
Benefits (Donors)	
 Total Support	 <u>\$5,000</u>
<b>Revenue:</b>	
Replacement Heifers	\$0
Short-Keep(s)	\$0
Cow, Calf Pairs	\$0
Forage	\$0
Grant Funds, Programs	\$0
Other	\$0
Total Revenue	<u>\$0</u>
 Total Support, Revenue	 <u>\$5,000</u>
<b>Expenses:</b>	
Lease	\$0
Pasture Management (Supplies,Equipment, Time)	\$0
Herd Management (contract services)	\$0
Other - salts-minerals - water	\$0
	<u>\$0</u>
<b>Overheads</b>	
Accounting Admin	\$0
Insurance	\$0
Telephone	\$0
Advertising/Promotion/Donations	\$0
Maintenance\Supplies	\$0
Office Supplies/Computer	\$0
Professional fees	\$750
Memberships, Dues & Fees	\$0
Other/ Sundry	\$0
	<u>\$750</u>
	<u>\$750</u>
Change in Net Assets before Amortization	operating costs before amtzn \$4,250
 Amortization\ Depreciation	 \$1,734 15yr Amtztn
	<u>\$2,516</u>
 Change in Net Assets	 <u>\$2,516</u> growth from Seed funds
 Net Assets, Beginning of the Year	
 Net Assets, End of the Year	 <u>\$2,516</u>

**Community Pasture - Lambton( 2025)**

Statement of Cashflows

Period Ended:

December 31, 2025

	<u>2025</u>
<b>CASHFLOW FROM OPERATING ACTIVITES</b>	
<i>Change in Net Assets</i>	
Adjustments to reconcile change in <b>net assets</b> to net cash provided by operating activities	\$2,516
Forgiveness of loans, debt	\$0
<i>Change in Net Assets, Liabilities</i>	
Grants and Accounts Receivables	-\$5,000
Accounts Payables	\$75,866
Accrued Liabilities	\$0
Grant Payable(s)	
NET CASH PROVIDED FROM OPERATING ACTIVITIES	<u>\$83,382</u>
<b>CASHFLOWS FROM FINANCING ACTIVITIES</b>	
Proceeds from Financing	\$104,069
NET CASH PROVIDED FROM FINANCING ACTIVITIES	
<b>NET INCREASE IN CASH, CASH EQUILVALENTS</b>	
CASH, CASH EQUILVANTS, BEGINING OF THE YEAR	\$0
CASH, CASH EQUILVANTS, END OF THE YEAR	-\$25,145

## Capital planning

Fencing - area 105 (77acres+/-)	\$95,374		
Fencing - area 111 (37 acres +/-)		\$32,080	
Fencing Stanley Line - area (40 +9.5 acres +/-)		\$32,204	
Fencing Area 111 - flats 13.2 acres+/-)		\$10,627	
Water System - area 105.....		\$5,838	
Water system - area 105 flats 13.2		incl	
seed - area Stanley line 40 acres (\$245/ac)	\$8,695		
seed - area 111 45.acres - (\$245/ac)		\$9,835	
	<u>\$104,069</u>	<u>\$90,584</u>	<u>\$0</u>
		\$194,653	





	Open	Jan-25	Feb-25	Mar-25	Apr-25	May-25	Jun-25	Jul-25	Aug-25	Sep-25	Oct-25	Nov-25	Dec-25
Bank OD													
Accounts Payable - Cdn										104,069	6,760	15,991	25,146
Payroll Liabilities (pending discussion)											93,662	84,296	75,866
H.S.T Payable											-1,353	-1,218	-1,193
Accrued Payable(s)													
<b>Net Long term debt-current</b>													
										104,069	99,069	99,069	99,819
<b>Net Long term debt-future</b>													
Deferred Income Taxes													
<b>Net Asset</b>										104,069	99,069	99,069	99,819
Beginning of the Year current										5,000	5,000	4,422	3,844
Net Asset, end of the Year										5,000	4,422	3,844	2,516
										109,069	103,491	102,913	102,335
										0	0	0	0
<b>BREAK EVEN - Sales Volume</b>	2,484										578	578	1,328

**INCOME & EXPENSE PROJECTION**



	TOTAL	Jan-25	Feb-25	Mar-25	Apr-25	May-25	Jun-25	Jul-25	Aug-25	Sep-25	Oct-25	Nov-25	Dec-25
Source funds	5,000									5,000	5,000	5,000	5,000
Grants, Awards, Seed funds - other	5,000									5,000			
Replacement Heifers													
Head Count/period													
Short Keeps													
Head Count/period													
Cow, Calf Pairs													
Head Count/period													
Forage													
lbs/acres													
Direct Cost													
Lease													
Pasture Management (Supplies, Equipment, Time)													
Herd Management (contract services)													
Other - salts-minerals - water													
Return	5,000									5,000			
100.00%													
Gross Contribution	5,000									5,000	5,000	5,000	5,000
<b>FINANCIAL STATEMENT PRESENTATION</b>													
Revenue	5,000									5,000			
Cost of Revenue/Support	5,000									5,000			
Net Change Net Asset	100.00%												
Percentage													



**GENERAL ADMINISTRATION**

	TOTAL	Jan-25	Feb-25	Mar-25	Apr-25	May-25	Jun-25	Jul-25	Aug-25	Sep-25	Oct-25	Nov-25	Dec-25
Accounting Admin													
Insurance													
Telephone													
Advertising/Promotion/Donations													
Maintenance/Supplies													
Office Supplies/Computer													
Professional fees	750												750
Memberships, Dues & Fees													
Other/ Sundry													
Amortization\ Depreciation	1,734										578	578	578
% of Total Sales	2,484										578	578	1,328
	49.69%										578	1,156	2,484
Other Income & Expenses													
Change to Net Asset	2,516									5,000	-578	-578	-1,328
<b>PROVISION FOR INCOME TAX</b>													
<sup>83</sup> Adjusted Change to Net Asset	2,516									5,000	-578	-578	-1,328
% of Total Sales	50.31%									5,000	4,422	3,844	2,516
<b>FUNDS FOR OPERATIONS</b>													
	2,516									5,000	-578	-578	-1,328
- Change to Net Asset													
- Depreciation	2,516									5,000	-578	-578	-1,328
- Loan Interest													
- Bank Charges/O.D. Interest													
<b>OPERATION SERVICING REQUIRED</b>													
- Lease Expense -													
- Interest													



**Community Pasture - Lambton( 2025)**

Statement of Financial Position

As At **December 31, 2026**

Assets:	2026	Comments2026
<b>Current:</b>		
Cash, Cash Equivalents, Seed funds (LCM)	\$0	
Grant Programs - awards	\$0	
Short Term Investments	\$0	
Accounts Receivable	\$0	from hd count - unpaid
Prepaid(s)	\$0	
Sundry Receivable	\$0	
<b>Total Current Assets</b>	<b>\$0</b>	
Fixed Assets - (planned) Investments	\$185,441	fence area 111 37ac @ \$1,238*.70/ac Fence St Line/flats @\$1,238*.65/ac water systems
	<b>\$185,441</b>	see area 111 45 AC
<b>Total Assets</b>	<b>\$185,441</b>	
	<b>2026</b>	
<b>Liabilities and Net Assets</b>		
<b>Current:</b>		
Bank OD	\$104,583	sum of AR-AP & Exp paid
Accounts Payable - Cdn	\$85,398	identifys \$190K funding
Payroll Liabilites (pending discussion)	\$0	
H.S.T Payable	-\$1,330	
Accrued Payable(s)	\$0	
Term Funds		
<b>Total Current Liabilities</b>	<b>\$188,651</b>	
Long-term Liabilities Term Funds		
<b>Total Liabilities</b>	<b>\$188,651</b>	
<b>Net Assets</b>		
	Prior \$2,516	
	Current -\$5,726	
Unrestricted	-\$3,210	Neg Operations
		Low revenue based on costs
<b>Total Net Assets</b>	<b>-\$3,210</b>	
<b>Total Liabilities and Net Assets</b>	<b>\$185,441</b>	

## Community Pasture - Lambton( 2025)

Statement of Activities

Period Ended: **December 31, 2026**

	<b>2026</b>
<b>Support:</b>	
Contribution	
Grants	\$0 TBD - funding
In-Kind Donations	\$0
Special Events:	
Revenue, Less cost of Direct Benefits (Donors)	\$0
 Total Support	 \$0
<b>Revenue:</b>	
Replacement Heifers	\$4,118 15hd @1.50/hd/dy
Short-Keep(s)	\$0
Cow, Calf Pairs	\$30,652 50 pairs @\$400/pr/season
Forage	\$5,108 7500lbs
Grant Funds, Programs	\$0
Other	\$0
Total Revenue	\$39,877
 Total Support, Revenue	 \$39,877
<b>Expenses:</b>	
Lease	\$22,125 TBC \$125/AC
Pasture Management (Supplies,Equipment, Time)	\$450 TBD - and defined
Herd Management (contract services)	\$9,200 \$1533/mos (man,eq,ph)
Other - salts-minerals - water	\$2,875 \$35/hd/mos + (600/6mos)
	\$34,650
<b>Overheads</b>	
Accounting Admin	\$700 estimate
Insurance	\$1,350 TBD
Telephone	\$0 estimate
Advertising/Promotion/Donations	\$0 estimate
Maintenance\Supplies	\$0 pasture,forage maintenace
Office Supplies/Computer	\$225 estimate
Professional fees	\$950 estimate
Memberships, Dues & Fees	\$250 estimate
Other/ Sundry	\$0
	\$3,475
	\$38,125 operating costs before amtzn
Change in Net Assets before Amortization	\$1,752
 Amortization\ Depreciation	 \$7,478 15yr Amtztn -\$5,726
 Change in Net Assets	 -\$5,726 Neg Operations revenue less costs
Net Assets, Beginning of the Year	
Net Assets, End of the Year	-\$5,726

**Community Pasture - Lambton( 2025)**

Statement of Cashflows

Period Ended:

December 31, 2026

	<b>2026</b>
<b>CASHFLOW FROM OPERATING ACTIVITES</b>	
<i>Change in Net Assets</i>	-\$3,210 SUM
Adjustments to reconcile change in <b>net assets</b> to net cash provided by operating activities	
Forgiveness of loans, debt	\$0 -
<i>Change in Net Assets, Liabilities</i>	
Grants and Accounts Receivables	-\$39,877 -
Accounts Payables	\$85,398 +
Accrued Liabilities	\$0 +
Grant Payable(s)	+
NET CASH PROVIDED FROM OPERATING ACTIVITIES	\$125,275
<b>CASHFLOWS FROM FINANCING ACTIVITIES</b>	
Proceeds from Financing	\$192,919
NET CASH PROVIDED FROM FINANCING ACTIVITIES	
<b>NET INCREASE IN CASH, CASH EQUILVALENTS</b>	
CASH, CASH EQUILVANTS, BEGINING OF THE YEAR	\$0
CASH, CASH EQUILVANTS, END OF THE YEAR	-\$104,583

## Capital planning

Fencing - area 105 (77acres+/-)	\$95,374		
Fencing - area 111 (37 acres +/-)		\$32,080	
Fencing Stanley Line - area (40 +9.5 acres +/-)		\$32,204	
Fencing Area 111 - flats 13.2 acres+/-)		\$10,627	
Water System - area 105.....		\$5,838	
Water system - area 105 flats 13.2		incl	
seed - area Stanley line 40 acres (\$245/ac)	\$8,695		
seed - area 111 45.acres - (\$245/ac)		\$9,835	
	<u>\$104,069</u>	<u>\$90,584</u>	<u>\$0</u>
		\$194,653	



Community Pasture - Lambton(2025)

	01-Jan-26	Jan-26	Feb-26	Mar-26	Apr-26	May-26	Jun-26	Jul-26	Aug-26	Sep-26	Oct-26	Nov-26	Dec-26
			1st Qtr			2nd Qtr			3rd Qtr			4th Qtr	
<b>ASSETS</b>													
Cash, Cash Equivalents, Seed funds (LCM)													
Grant Programs - awards													
Short Term Investments													
Accounts Receivable						4,176	5,127	5,740	6,524	4,717	-0	-0	-0
Prepaid(s)													
Sundry Receivable													
<b>NBV Fixed Assets (15yr straightline)</b>													
Fence/Gates	102,335	101,766	101,197	100,629	109,895	190,023	189,369	188,714	188,060	187,405	186,751	186,096	185,441
Solar, energize system	93,784	93,263	92,742	92,221	91,700	166,091	165,570	165,049	164,528	164,007	163,486	162,965	162,444
infrastructure - water - supply, system						5,838	5,806	5,773	5,741	5,708	5,676	5,643	5,611
Forage, seeding, establishment	8,550	8,503	8,455	8,408	18,195	18,094	17,993	17,892	17,791	17,690	17,589	17,487	17,386
Equipment													
	<b>102,335</b>	<b>101,766</b>	<b>101,197</b>	<b>100,629</b>	<b>109,895</b>	<b>194,199</b>	<b>194,496</b>	<b>194,455</b>	<b>194,584</b>	<b>192,122</b>	<b>186,750</b>	<b>186,096</b>	<b>185,441</b>



	01-Jan-26	Jan-26	Feb-26	Mar-26	Apr-26	May-26	Jun-26	Jul-26	Aug-26	Sep-26	Oct-26	Nov-26	Dec-26
<b>LIABILITIES</b>													
Bank OD	25,146	32,526	39,463	46,042	52,489	59,398	66,564	74,521	80,013	83,909	84,196	94,334	104,583
Accounts Payable - Cdn	75,866	70,123	64,955	60,453	66,087	144,084	133,682	124,170	115,609	108,055	101,105	92,839	85,398
Payroll Liabilities (pending discussion)													
H.S.T Payable	-1,193	-986	-912	-844	-822	-872	-1,893	-1,751	-1,627	-1,529	-1,437	-1,314	-1,330
Accrued Payable(s)													
<b>Net Long term debt-current</b>													
	99,819	101,663	103,507	105,650	117,754	202,610	198,353	196,940	193,995	190,435	183,864	185,858	188,651
<b>Net Long term debt-future</b>													
Deferred Income Taxes	99,819	101,663	103,507	105,650	117,754	202,610	198,353	196,940	193,995	190,435	183,864	185,858	188,651
<b>Net Asset</b>													
Beginning of the Year	3,844	2,516	103	-2,309	-5,021	-7,859	-8,411	-3,857	-2,486	588	1,687	2,886	238
current	-1,328	-2,412	-2,412	-2,712	-2,837	-553	4,554	1,371	3,074	1,099	1,199	-2,648	-3,448
<b>Net Asset, end of the Year</b>	2,516	103	-2,309	-5,021	-7,859	-8,411	-3,857	-2,486	588	1,687	2,886	238	-3,210
	102,335	101,766	101,197	100,629	109,895	194,199	194,496	194,455	194,584	192,122	186,750	186,096	185,441
	0	0	0	0	0	0	0	0	0	0	0	0	0
<b>BREAK EVEN - Sales Volume</b>	10,953					872	955	905	905	1,005	1,055	805	1,605

INCOME & EXPENSE PROJECTION



	TOTAL	Jan-26	Feb-26	Mar-26	Apr-26	May-26	Jun-26	Jul-26	Aug-26	Sep-26	Oct-26	Nov-26	Dec-26
Source funds	39,877					4,176	9,515	6,132	7,835	6,110	6,110	39,877	39,877
Grants, Awards, Seed funds - other						4,176	13,691	19,823	27,558	33,767	39,877	39,877	39,877
Replacement Heifers	4,118					698	675	698	698	675	675	675	675
Head Count/period						15	15	15	15	15	15	15	15
Short Keeps													
Head Count/period													
Cow, Calf Pairs	30,652					3,478	5,435	5,435	5,435	5,435	5,435	5,435	5,435
Head Count/period						40	50	50	50	50	50	50	50
Forage	5,108						3,405		1,703				
Ibs/acres													
Direct Cost													
Lease (177 ac @ 125/ac)	22,125	442.50%	1,844	1,844	1,844	1,844	1,844	1,844	1,844	1,844	1,844	1,844	1,844
Pasture Management (Supplies, Equipment, Time)	450	9.00%			150		150			150			150
Herd Management (contract services)	9,200	184.00%				1,533	1,533	1,533	1,533	1,533	1,533	1,533	1,533
Other - salts-minerals - water	2,875	57.50%			479	479	479	479	479	479	479	479	479
47	34,650		1,844	1,844	1,994	3,856	4,006	3,856	3,856	4,006	3,856	1,844	1,844
Return	5,227	13.11%	-1,844	-1,844	-1,994	320	5,509	2,276	3,979	2,104	2,254	-1,844	-1,844
Gross Contribution	5,227		-1,844	-1,844	-1,994	320	5,509	2,276	3,979	2,104	2,254	-1,844	-1,844
			-1,844	-3,688	-5,681	-7,525	-1,697	579	4,558	6,661	8,915	7,071	5,227



Community Pasture Project - Lambton(2025)

Plan (2)  
185 acres Pasture  
8.3 acres - forage

Season	(May-October) 6 months						May 01-October 31, 2026					
	Jan-26	Feb-26	Mar-26	Apr-26	May-26	Jun-26	Jul-26	Aug-26	Sep-26	Oct-26	Nov-26	Dec-26

Cow Calf Pairs per day/season Head Count (In)  
 \$ 400.00  
 \$ 2.17

IN	OUT	Head count	Days available
0	0	40	10
0	0	0	0
0	0	40	50
30	31	30	31
61	92	123	153
184			

Forage(standing hay @ \$0.03/lb - 7,500lbs harvest) 22.7 acres  
 Forage (area 11 - standing hay @ \$0.03/lb -lbs/harvest) 45.3 acres

\$3,405 \$1,703

Farm, Member	Lot	Date	Head Count	Days
Farm, Member	Lot 1	IN	20	20
		OUT	20	20
	Lot 2	IN	0	0
		OUT	0	0
		Count	0	0
		Days	0	0

Farm, Member	Lot	Date	Head Count	Days
Farm, Member	Lot 1	IN	20	20
		OUT	20	20
	Lot 2	IN	0	0
		OUT	0	0
		Count	0	0
		Days	0	0

Farm, Member	Lot	Date	Head Count	Days
Farm, Member	Lot 1	IN	5	5
		OUT	5	5
	Count	0	0	
		Days	0	0

Community Pasture Project - Lambton(2025)

Plan (2)  
185 acres Pasture  
8.3 acres - forage

		(May-October) 6 months May 01-October31,2026											
Season		Jan-26	Feb-26	Mar-26	Apr-26	May-26	Jun-26	Jul-26	Aug-26	Sep-26	Oct-26	Nov-26	Dec-26
Lot 2	Days					31	30	31	31	30	31	30	31
	IN												
	OUT												
Date Out													
Count						0	0	0	0	0	0	0	0
Days						31	30	31	31	30	31	30	31

Farm, Member		Date	Head Count	Days
Lot 1	IN	6/15/26	5	
	OUT			5
	Date Out			
Count			0	
Days			29	10/22/26
Lot 2	IN	7/01/26	0	
	OUT			0
	Date Out			
Count			0	
Days			0	

FINANCIAL STATEMENT PRESENTATION

Revenue	39,877																			
Cost of Revenue/Support	34,650	1,844	1,844	1,994	1,844	4,176	9,515	6,132	7,835	6,110	6,110	3,856	1,844	1,844	1,844	1,844	1,844	1,844	1,844	1,844
Net Change Net Asset	5,227	-1,844	-1,844	-1,994	-1,844	320	5,509	2,276	3,979	2,104	2,104	3,979	2,276	2,254	-1,844	-1,844	-1,844	-1,844	-1,844	-1,844
Percentage	13.11%																			



GENERAL ADMINISTRATION

Accounting Admin	700																			
Insurance	1,350																			
Telephone																				
Advertising/Promotion/Donations																				
Maintenance/Supplies																				
Office Supplies/Computer	225					25	50													
Professional fees	950																			
Memberships, Dues & Fees	250					250														
Other/ Sundry																				950

Amortization\ Depreciation	7,478	569	569	569	569	622	655	655	655	655	655	655	655	655	655	655	655	655	655	655
% of Total Sales	27.47%	569	569	719	994	872	955	905	905	905	905	905	905	905	905	905	905	905	905	905

Other Income & Expenses

Change to Net Asset	-5,726	-2,412	-2,412	-2,712	-2,837	-553	4,554	1,371	3,074	1,099	1,199	-2,648	-3,448
---------------------	--------	--------	--------	--------	--------	------	-------	-------	-------	-------	-------	--------	--------

PROVISION FOR INCOME TAX

Adjusted Change to Net Asset	-5,726	-2,412	-2,412	-2,712	-2,837	-553	4,554	1,371	3,074	1,099	1,199	-2,648	-3,448
------------------------------	--------	--------	--------	--------	--------	------	-------	-------	-------	-------	-------	--------	--------

% of Total Sales	-14.36%	-4,825	-7,537	-10,374	-10,927	-6,373	-5,001	-1,927	-828	371	-2,278	-5,726
------------------	---------	--------	--------	---------	---------	--------	--------	--------	------	-----	--------	--------

FUNDS FOR OPERATIONS

Change to Net Asset	-5,726	-2,412	-2,412	-2,712	-2,837	-553	4,554	1,371	3,074	1,099	1,199	-2,648	-3,448
---------------------	--------	--------	--------	--------	--------	------	-------	-------	-------	-------	-------	--------	--------

- Change to Net Asset
- Depreciation
- Loan Interest
- Bank Charges/O.D. Interest

OPERATION SERVICING REQUIRED

- Lease Expense -
- Interest

CASHFLOW PROJECTIONS



	TOTAL	Jan-26	Feb-26	Mar-26	Apr-26	May-26	Jun-26	Jul-26	Aug-26	Sep-26	Oct-26	Nov-26	Dec-26
<b>RECEIPTS</b>													
Sales(include taxes)	39,877						8,563	5,519	7,051	7,917	10,827		
	<u>39,877</u>						<u>8,563</u>	<u>5,519</u>	<u>7,051</u>	<u>7,917</u>	<u>10,827</u>		
<b>DISBURSEMENTS (Incld taxes)</b>													
W/SIB													
Accounts Payables	130,744	8,573	7,924	7,340	6,831	7,468	16,282	15,106	14,031	13,064	12,210	11,425	10,491
Accounting Admin	791					113	113	113	113	170	170	150	
Insurance	1,350			150	150	150	150	150	150	150	150	150	
Telephone													
Advertising/Promotion/Donations													
Maintenance\Supplies													
Office Supplies/Computer	254				28		57				113		1,074
Professional Fees	1,074												
Memberships, Dues & Fees	283				283								
Loan - Capital													
Loan Principle													
Loan - Interest													
Bank charges\interest													
Equipment Lease													
SHST (calculation)	-15,318	-986	-912	-844	-822	-872	-1,893	-1,751	-1,627	-1,529	-1,437	-1,314	-1,330
H.S.T. Remittances	-15,181	-1,193	-986	-912	-844	-822	-872	-1,893	-1,751	-1,627	-1,529	-1,437	-1,314
Capital Equipment Purchase													
		<u>7,380</u>	<u>6,938</u>	<u>6,578</u>	<u>6,448</u>	<u>6,909</u>	<u>15,729</u>	<u>13,476</u>	<u>12,543</u>	<u>11,813</u>	<u>11,114</u>	<u>10,138</u>	<u>10,250</u>
<b>SURPLUS&lt;DEFICIT&gt;</b>													
Balance b/f		-7,380	-6,938	-6,578	-6,448	-6,909	-7,166	-7,957	-5,492	-3,896	-287	-10,138	-10,250
		-25,146	-32,526	-39,463	-46,042	-52,489	-59,398	-66,564	-74,521	-80,013	-83,909	-84,196	-94,334
		-32,526	-39,463	-46,042	-52,489	-59,398	-66,564	-74,521	-80,013	-83,909	-84,196	-94,334	-104,583

YEAR 2 - Dec 31, 2026

**Community Pasture - Lambton( 2025)**

Statement of Financial Position

As At **December 31, 2027**

Comments2027

<b>Assets:</b>	<b>2027</b>	
<b>Current:</b>		
Cash, Cash Equivalents, Seed funds (LCM)	\$0	
Grant Programs - awards	\$0	
Short Term Investments	\$0	
Accounts Receivable	\$0	
Prepaid(s)	\$0	
Sundry Receivable	\$0	
<b>Total Current Assets</b>	<b>\$0</b>	
Fixed Assets - (planned) Investments	\$173,079	NBV - 3rd yr - 15yr amtzn
	<u>\$173,079</u>	
<b>Total Assets</b>	<b>\$173,078</b>	
	<u><b>2027</b></u>	
<b>Liabilities and Net Assets</b>		
<b>Current:</b>		
Bank OD	\$139,733	sum of AR-AP & Exp paid
Accounts Payable - Cdn	\$46,341	identifys \$190K funding
Payroll Liabilites (pending discussion)	\$0	
H.S.T Payable	-\$766	
Accrued Payable(s)	\$0	
Term Funds		
<b>Total Current Liabilities</b>	<b>\$185,308</b>	
Long-term Liabilities Term Funds		
<b>Total Liabilities</b>	<b>\$185,308</b>	
<b>Net Assets</b>		
	Prior	-\$3,210
	Current	-\$9,019
Unrestricted		<u>-\$12,229</u>
		Neg Operations
<b>Total Net Assets</b>		<u>-\$12,229</u>
		Low revenue based on costs
<b>Total Liabilities and Net Assets</b>		<u><b>\$173,078</b></u>

## Community Pasture - Lambton( 2025)

Statement of Activities

Period Ended: **December 31, 2027**

	<b>2027</b>
<b>Support:</b>	
Contribution	
Grants	\$0 TBD - funding
In-Kind Donations	\$0
Special Events:	
Revenue, Less cost of Direct Benefits (Donors)	\$0
 Total Support	 \$0
<b>Revenue:</b>	
Replacement Heifers	\$13,725 50hd @1.50/hd/dy
Short-Keep(s)	\$0
Cow, Calf Pairs	\$25,859 65 pairs @\$400/pr/season
Forage	\$3,735 5100lbs
Grant Funds, Programs	\$0
Other	\$0
Total Revenue	\$43,319
 Total Support, Revenue	 \$43,319
<b>Expenses:</b>	
Lease	\$22,125 TBC \$125/AC
Pasture Management (Supplies, Equipment, Time)	\$300 TBD - and defined
Herd Management (contract services)	\$9,200 \$1533/mos (man, eq, ph)
Other - salts-minerals - water	\$4,650 \$35/hd/mos + (800/6mos)
	\$36,275
<b>Overheads</b>	
Accounting Admin	\$650 estimate
Insurance	\$1,350 TBD
Telephone	\$0 estimate
Advertising/Promotion/Donations	\$0 estimate
Maintenance\Supplies	\$250 pasture, forage maintenace
Office Supplies/Computer	\$250 estimate
Professional fees	\$950 estimate
Memberships, Dues & Fees	\$250 estimate
Other/ Sundry	\$0
	\$3,700
	\$39,975 operating costs before amtzn
Change in Net Assets before Amortization	\$3,344
 Amortization\ Depreciation	 \$12,363 15yr Amtzn -\$9,019
 Change in Net Assets	 -\$9,019 Neg Operations revenue less costs
Net Assets, Beginning of the Year	
Net Assets, End of the Year	-\$9,019

**Community Pasture - Lambton( 2025)**

Statement of Cashflows

Period Ended:

December 31, 2027

	<b>2027</b>
<b>CASHFLOW FROM OPERATING ACTIVITES</b>	
<i>Change in Net Assets</i>	-\$9,019
Adjustments to reconcile change in <b>net assets</b> to net cash provided by operating activities	
Forgiveness of loans, debt	\$0
<i>Change in Net Assets, Liabilities</i>	
Grants and Accounts Receivables	-\$43,319
Accounts Payables	\$46,341
Accrued Liabilities	\$0
Grant Payable(s)	
NET CASH PROVIDED FROM OPERATING ACTIVITIES	\$89,660
<b>CASHFLOWS FROM FINANCING ACTIVITIES</b>	
Proceeds from Financing	\$185,441
NET CASH PROVIDED FROM FINANCING ACTIVITIES	
NET INCREASE IN CASH, CASH EQUIVALENTS	
CASH, CASH EQUIVANTS, BEGINING OF THE YEAR	\$0
CASH, CASH EQUILVANTS, END OF THE YEAR	-\$139,733

## Capital planning

Fencing - area 105 (77acres+/-)	\$95,374		
Fencing - area 111 (37 acres +/-)		\$32,080	
Fencing Stanley Line - area (40 +9.5 acres +/-)		\$32,204	
Fencing Area 111 - flats 13.2 acres+/-)		\$10,627	
Water System - area 105.....		\$5,838	
Water system - area 105 flats 13.2		incld	
seed - area Stanley line 40 acres (\$245/ac)	\$8,695		
seed - area 111 45.acres - (\$245/ac)		\$9,835	
	<u>\$104,069</u>	<u>\$90,584</u>	<u>\$0</u>
		\$194,653	



Community Pasture - Lambton(2025)

3rd Year operations

	1st Qtr			2nd Qtr			3rd Qtr			4th Qtr			
	01-Jan-27	Jan-27	Feb-27	Mar-27	Apr-27	May-27	Jun-27	Jul-27	Aug-27	Sep-27	Oct-27	Nov-27	Dec-27
<b>ASSETS</b>													
Cash, Cash Equivalents, Seed Funds (LCM)													
Grant Programs - awards													
Short Term Investments													
Accounts Receivable	-0	-0	-0	-0	-0	6,705	7,541	211	1,069	1,908	-0	-0	-0
Prepaid(s)													
Sundry Receivable													
<b>NBV Fixed Assets (15yr straightline)</b>													
	-0	-0	-0	-0	-0	6,705	7,541	211	1,069	1,908	-0	-0	-0
	<b>185,441</b>	<b>184,411</b>	<b>183,381</b>	<b>182,351</b>	<b>181,321</b>	<b>180,290</b>	<b>179,260</b>	<b>178,230</b>	<b>177,200</b>	<b>176,169</b>	<b>175,139</b>	<b>174,109</b>	<b>173,079</b>
Fence/Gates	162,444	161,542	160,639	159,737	158,834	157,932	157,029	156,127	155,224	154,322	153,419	152,517	151,614
Solar, energize system													
Infrastructure - water - supply, system	5,611	5,580	5,549	5,517	5,486	5,455	5,424	5,393	5,362	5,330	5,299	5,268	5,237
Forage, seeding, establishment	17,386	17,290	17,193	17,097	17,000	16,903	16,807	16,710	16,614	16,517	16,420	16,324	16,227
Equipment													
	<b>185,441</b>	<b>184,411</b>	<b>183,381</b>	<b>182,350</b>	<b>181,320</b>	<b>180,295</b>	<b>179,260</b>	<b>178,230</b>	<b>177,200</b>	<b>176,170</b>	<b>175,139</b>	<b>174,109</b>	<b>173,078</b>



**LIABILITIES**

	01-Jan-27	Jan-27	Feb-27	Mar-27	Apr-27	May-27	Jun-27	Jul-27	Aug-27	Sep-27	Oct-27	Nov-27	Dec-27
Bank OD	104,583	112,903	120,686	128,025	135,169	141,567	140,354	132,379	130,563	131,003	128,368	133,760	139,733
Accounts Payable - Cdn	85,398	78,702	72,676	67,252	62,371	60,286	58,409	56,720	55,200	53,982	52,886	49,441	46,341
Payroll Liabilities (pending discussion)													
H.S.T Payable	-1,330	-1,110	-1,023	-945	-913	-824	-803	-772	-750	-770	-734	-688	-766
Accrued Payable(s)													
<b>Net Long term debt-current</b>													
	188,651	190,495	192,339	194,333	196,626	201,029	197,960	188,327	185,013	184,215	180,520	182,514	185,308
<b>Net Long term debt-future</b>													
Deferred Income Taxes	188,651	190,495	192,339	194,333	196,626	201,029	197,960	188,327	185,013	184,215	180,520	182,514	185,308
<b>Net Asset</b>													
Beginning of the Year	238	-3,210	-6,084	-8,958	-11,982	-15,306	-14,033	-11,159	-9,886	-6,745	-6,138	-5,381	-8,405
Current	-3,448	-2,874	-2,874	-3,024	-3,324	1,273	2,874	1,273	3,141	607	757	-3,024	-3,824
<b>Net Asset, end of the Year</b>	-3,210	-6,084	-8,958	-11,982	-15,306	-14,033	-11,159	-9,886	-6,745	-6,138	-5,381	-8,405	-12,229
	185,441	184,411	183,381	182,350	181,320	186,995	186,801	178,441	178,268	178,077	175,139	174,109	173,078
	0	0	0	0	0	0	0	0	0	0	0	0	0
<b>BREAK EVEN - Sales Volume</b>	16,063					1,280	1,330	1,280	1,280	1,580	1,430	1,180	1,980

INCOME & EXPENSE PROJECTION



	TOTAL	Jan-27	Feb-27	Mar-27	Apr-27	May-27	Jun-27	Jul-27	Aug-27	Sep-27	Oct-27	Nov-27	Dec-27
Source funds	43,319					6,705	8,357	6,705	8,573	6,489	6,489	43,319	43,319
Grants, Awards, Seed funds - other													
Replacement Heifers	13,725					2,325	2,250	2,325	2,325	2,250	2,250		
Head Count/period						50	50	50	50	50	50		
Short Keeps													
Head Count/period													
Cow, Calf Pairs	25,859					4,380	4,239	4,380	4,380	4,239	4,239		
Head Count/period						65	65	65	65	65	65		
Forage	3,735						1,868		1,868				
lbs/acres													
Direct Cost													
Lease (177 ac @ @125/ac)	22,125	442.50%	1,844	1,844	1,844	1,844	1,844	1,844	1,844	1,844	1,844	1,844	1,844
Pasture Management (Supplies, Equipment, Time)	300	6.00%								150	150		
Herd Management (contract services)	9,200	184.00%				1,533	1,533	1,533	1,533	1,533	1,533		
Other - salts-minerals - water	4,650	93.00%				775	775	775	775	775	775		
Return	36,275		1,844	1,844	1,844	4,152	4,152	4,152	4,152	4,302	4,302	1,844	1,844
16.26%	7,044		-1,844	-1,844	-1,844	2,553	4,205	2,553	4,421	2,187	2,187	-1,844	-1,844
Gross Contribution	7,044		-1,844	-1,844	-1,844	2,553	4,205	2,553	4,421	2,187	2,187	-1,844	-1,844
-1,844			-3,688	-5,531	-7,375	-4,822	-617	1,936	6,357	8,544	10,731	8,887	7,044
FINANCIAL STATEMENT PRESENTATION													
Revenue	43,319					6,705	8,357	6,705	8,573	6,489	6,489	43,319	43,319
Cost of Revenue/Support	36,275		1,844	1,844	1,844	4,152	4,152	4,152	4,152	4,302	4,302	1,844	1,844
Net Change Net Asset	7,044		-1,844	-1,844	-1,844	2,553	4,205	2,553	4,421	2,187	2,187	-1,844	-1,844
Percentage	16.26%												

Community Pasture Project - Lambton(2025)

Plan (2)  
165 acres Pasture  
8.3 acres - forage

Season (May-October) 6 months  
May 01-October 31 2026

Replacement Heifers	per day/head \$	Head Count (In)	Jan-27	Feb-27	Mar-27	Apr-27	May-27	Jun-27	Jul-27	Aug-27	Sep-27	Oct-27	Nov-27	Dec-27
	1.50													
		IN					0	50	0	0	0	0	0	0
		OUT					0	0	0	0	0	50	0	0
		Head count					0	50	50	50	50	50	0	0
		Days available	31	28	31	30	31	30	31	31	30	31		
Short Keeps	\$ 2.00	IN												
		OUT												
		Head count				0	0	0	0	0	0	0	0	0
		Days available	31	28	31	30	31	30	31	31	30	31		

Farm, Member	Lot	Date	Head Count	Days
Lot 1	IN	5/01/27	20	
	OUT			
	Count		0	
	Days			
	IN	6/01/27	0	
	OUT			
Lot 2	IN	6/01/27	0	
	OUT			
	Count		0	
	Days			
	IN	6/01/27	0	
	OUT			

Farm, Member	Lot	Date	Head Count	Days
Lot 1	IN	5/01/27	10	
	OUT			
	Count		0	
	Days			
	IN	6/01/27	20	
	OUT			
Lot 2	IN	6/01/27	20	
	OUT			
	Count		0	
	Days			
	IN	6/01/27	20	
	OUT			

Community Pasture Project - Lambton(2025)

Plan (2)  
185 acres Pasture  
8.3 acres - forage

Season		(May-October) 6 months May 01-October 31, 2026											
		Jan-27	Feb-27	Mar-27	Apr-27	May-27	Jun-27	Jul-27	Aug-27	Sep-27	Oct-27	Nov-27	Dec-27

Farm, Member	Lot	IN	OUT	Date	Head Count	Days	Jan-27	Feb-27	Mar-27	Apr-27	May-27	Jun-27	Jul-27	Aug-27	Sep-27	Oct-27	Nov-27	Dec-27			
Farm, Member	Lot 1	IN		6/15/27	0																
		OUT				0															
	Lot 2	IN		7/01/27	0																
		OUT				0															
		Count				0															
		Days																			

Farm, Member	Lot	IN	OUT	Date	Head Count	Days	Jan-27	Feb-27	Mar-27	Apr-27	May-27	Jun-27	Jul-27	Aug-27	Sep-27	Oct-27	Nov-27	Dec-27			
Farm, Member	Lot 1	IN		5/01/27	0																
		OUT				0															
	Lot 2	IN		5/01/27	0																
		OUT				0															
		Count				0															
		Days																			

Community Pasture Project - Lambton(2025)

Plan (2)  
185 acres Pasture  
8.3 acres - forage

Season	(May-October) 6 months		May 01-October 31, 2026											
	Jan-27	Feb-27	Mar-27	Apr-27	May-27	Jun-27	Jul-27	Aug-27	Sep-27	Oct-27	Nov-27	Dec-27		

Cow Calf Pairs      per day/season      Head Count (ln)  
\$ 400.00  
\$ 2.17

	IN	OUT	Head count	Days available
Jan-27	0	0	0	0
Feb-27	0	0	0	0
Mar-27	0	0	0	0
Apr-27	0	0	0	0
May-27	65	0	65	61
Jun-27	0	0	65	92
Jul-27	0	0	65	123
Aug-27	0	0	65	153
Sep-27	0	0	65	184
Oct-27	0	0	65	
Nov-27	0	0	65	
Dec-27	0	0	65	

Forage (area 11 - standing hay @ \$0.03/lb -lbs/harvest)      8.3      0      \$1,868      \$1,868

62

Farm, Member	Lot	Date	Head Count	Days
Farm, Member	Lot 1	IN	25	25
		OUT		
	Date Out		10/22/27	
	Lot 2	IN	0	0
		OUT		
	Date Out		31	
Count		0	0	
Days		31	30	

Farm, Member	Lot	Date	Head Count	Days
Farm, Member	Lot 1	IN	30	30
		OUT		
	Date Out		10/22/27	
	Lot 2	IN	0	0
		OUT		
	Date Out		31	
Count		0	0	
Days		31	30	

Community Pasture Project - Lambton(2025)

Plan (2) 185 acres Pasture  
8.3 acres - forage

Season (May-October) 6 months  
May 01-October 31, 2026

Farm, Member	Date	Head Count	Days	Jan-27	Feb-27	Mar-27	Apr-27	May-27	Jun-27	Jul-27	Aug-27	Sep-27	Oct-27	Nov-27	Dec-27
Lot 1	IN	10						10							
	OUT		10										10		
Lot 2	IN	0						10	10	10	10	10	10	0	0
	OUT		0						30	31	31	31	31	30	31
Date Out	Count							0	0	0	0	0	0	0	0
	Days							30	31	31	31	31	30	31	31

Farm, Member	Date	Head Count	Days	Jan-27	Feb-27	Mar-27	Apr-27	May-27	Jun-27	Jul-27	Aug-27	Sep-27	Oct-27	Nov-27	Dec-27
Lot 1	IN	0													
	OUT		0												
Lot 2	IN	0						30	31	0	0	0	0	0	0
	OUT		0						0	0	0	0	0	0	0
Date Out	Count							0	0	0	0	0	0	0	0
	Days							30	31	31	31	31	30	31	31



**GENERAL ADMINISTRATION**

	TOTAL	Jan-27	Feb-27	Mar-27	Apr-27	May-27	Jun-27	Jul-27	Aug-27	Sep-27	Oct-27	Nov-27	Dec-27
Accounting Admin	650												
Insurance	1,350			150	150	100	100	100	100	100	150	150	150
Telephone													
Advertising/Promotion/Donations	250						50			250	100		
Maintenance/Supplies	250									50			
Office Supplies/Computer	950												
Professional Fees													
Memberships, Dues & Fees	250												950
Other/ Sundry													
Amortization\ Depreciation	12,363	1,030	1,030	1,030	1,030	1,030	1,030	1,030	1,030	1,030	1,030	1,030	1,030
% of Total Sales	16,063	1,030	1,030	1,180	1,480	1,280	1,330	1,280	1,280	1,580	1,430	1,180	1,980
	37.08%		2.060	3.241	4.721	6.001	7.331	8.612	1.280	2.860	4.291	5.471	7.451
Other Income & Expenses													
Change to Net Asset	-9,019	-2,874	-2,874	-3,024	-3,324	1,273	2,874	1,273	3,141	607	757	-3,024	-3,824
<b>PROVISION FOR INCOME TAX</b>													
Adjusted Change to Net Asset	-9,019	-2,874	-2,874	-3,024	-3,324	1,273	2,874	1,273	3,141	607	757	-3,024	-3,824
% of Total Sales	-20.82%		-5.748	-8.772	-12.096	-10.823	-7.948	-6.675	-3.535	-2.928	-2.171	-5.195	-9.019
<b>FUNDS FOR OPERATIONS</b>													
	-9,019	-2,874	-2,874	-3,024	-3,324	1,273	2,874	1,273	3,141	607	757	-3,024	-3,824
- Change to Net Asset	-9,019	-2,874	-2,874	-3,024	-3,324	1,273	2,874	1,273	3,141	607	757	-3,024	-3,824
- Depreciation													
- Loan Interest													
- Bank Charges/O.D. Interest													
<b>OPERATION SERVICING REQUIRED</b>													
- Lease Expense -													
- Interest													

CASHFLOW PROJECTIONS



	TOTAL	Jan-27	Feb-27	Mar-27	Apr-27	May-27	Jun-27	Jul-27	Aug-27	Sep-27	Oct-27	Nov-27	Dec-27
<b>RECEIPTS</b>													
Sales(include taxes)	43,319						7,521	14,035	7,716	5,650	8,397		
	<u>43,319</u>						<u>7,521</u>	<u>14,035</u>	<u>7,716</u>	<u>5,650</u>	<u>8,397</u>		
<b>DISBURSEMENTS (incld taxes)</b>													
W/SIB													
Accounts Payables	85,126	9,650	8,893	8,212	7,599	7,048	6,812	6,600	6,409	6,238	6,100	5,976	5,587
Accounting Admin	735					113	113	113	113	113	170	150	
Insurance	1,350			150	150	150	150	150	150	150	150	150	
Telephone													
Advertising/Promotion/Donations													
Maintenance/Supplies	283									283			
Office Supplies/Computer	283				57		57			57	113		1,074
Professional Fees	1,074												
Memberships, Dues & Fees	283				283								
Loan - Capital													
Loan Principle													
Loan - Interest													
Bank charges/Interest													
Equipment Lease													
Capital Equipment Purchase													
HST (calculation)	-10,099	-1,110	-1,023	-945	-913	-824	-803	-772	-750	-770	-734	-688	-766
H.S.T. Remittances	-10,663	-1,330	-1,110	-1,023	-945	-913	-824	-803	-772	-750	-770	-734	-688
		<u>8,320</u>	<u>7,783</u>	<u>7,339</u>	<u>7,144</u>	<u>6,398</u>	<u>6,308</u>	<u>6,060</u>	<u>5,900</u>	<u>6,089</u>	<u>5,763</u>	<u>5,392</u>	<u>5,973</u>
<b>SURPLUS&lt;DEFICIT&gt;</b>													
Balance b/f		-8,320	-7,783	-7,339	-7,144	-6,398	-1,213	7,975	1,816	-439	2,634	-5,392	-5,973
		-104,583	-112,903	-120,686	-128,025	-135,169	-141,567	-140,354	-132,379	-130,563	-128,368	-128,368	-133,760
		-112,903	-120,686	-128,025	-135,169	-141,567	-140,354	-132,379	-130,563	-131,003	-128,368	-133,760	-139,733

YEAR 3 - Dec 31, 2027



# ONTARIO BEEF FARMS AND THE ENVIRONMENT

## *The facts on the positive impacts of beef farming*

Ontario beef is not only produced sustainably, it can even have a positive impact on our environment. Beef cattle in Ontario spend the first part of their lives on pasture, and then they often spend a few months in feedlot barns where resources are used as efficiently as possible to reduce beef's environmental footprint. This combination of pasture and feedlot, which is typical in Ontario, combines the resource efficiency of feedlot barns with the immense environmental benefits that come from pasture and other forms of tame grasslands.

Whether they are in a barn or on pasture, beef cattle's diet always includes grass, forages and hay (which is dried grass). Beef production goes hand-in-hand with tame grasslands like pastures and hayfields, which provide wildlife habitat, carbon storage, soil health benefits, and more ecosystem benefits. The symbiotic relationship between grasslands and cattle has a measurable impact on the environment and the well-being of people.

### ONTARIO HAS...

- 6,760 beef farms
- Over 896,000 beef cattle
- 2 million dedicated acres to pastures and hayfields

### GRASSLAND BIRDS

**57%** reduction in grassland birds in Canada since 1970  
This includes species at risk in Ontario that depend on grasslands managed by beef farmers:

- **77%** decline in Bobolink birds
- **62%** decline in Eastern Meadowlark birds
- Hayfields & pastureland provide **surrogate habitats** for endangered bird species
- More beef farming leads to more habitat for endangered grassland birds

**13 out of 18 bumblebee species in Ontario are in decline. Grasslands provide proven habitats for nesting and overwintering.**



## 4 WAYS WE'RE LOOKING OUT FOR THE ENVIRONMENT



### WATER

Every kg of beef produced in Canada uses around 1,150 litres, which is 17% less than 30 years ago. And most importantly, most of the water used comes directly from rainfall and is recycled via the land.



### SOIL

Pasture and hayfields have permanent root systems and provide ground cover, which helps filter nutrients and reduce soil erosion.



### GREENHOUSE GASES

While most greenhouse gases in beef production come from methane produced in cattle's gastrointestinal tract, these methane emissions are partially offset by grasslands. Innovations in feed, cattle management and other farming practices are also helping us reduce methane emissions.



### CLIMATE CHANGE

Grasslands help mitigate climate change by sequestering and storing carbon mainly in the soil, with a slower turnover of carbon below ground. This leads to positive accumulation of organic matter.

**The grasslands in Ontario provide many vital environmental benefits, including habitats for grassland birds and pollinators and through their role as carbon sinks. By protecting the grasslands, Ontario beef farmers are protecting the environment.**

### THE BENEFITS OF GRASSLANDS

Ontario has lost over 4,300 km<sup>2</sup> of grasslands to encroachment from urban development – that's just under the size of Prince Edward Island! When we lose grasslands, we lose wildlife and pollinator habitat, carbon storage, biodiversity, and benefits to soil and water quality.

Ontario's beef farmers manage the majority of our province's tame grasslands, and they work hard to protect this important natural ecosystem while producing high-quality local beef. Beef farming in Ontario is helping to reverse the trend of disappearing grasslands.

In Canada, over  
1,000 plants,  
animal and insect  
species call beef  
farm grasslands  
their home.

# Canadian beef is <sup>68</sup>critical for biodiversity

While Canada's overall wildlife habitat capacity has decreased due to land conversion,



the beef industry's share of the remaining capacity has increased\*<sup>1</sup>



Grazing cattle is critical to preserving habitat and supporting biodiversity.

\*Data is representative of the time interval 2016-2021

<sup>1</sup>Canadian Roundtable for Sustainable Beef. (2024a). National Beef Sustainability Assessment: Environmental and Social Assessments. Calgary, AB: Groupe AGECC. (CRSB NBSA, 2024a).



Funding for this project has been provided through the AgriAssurance Program under the Sustainable Canadian Agricultural Partnership, a federal-provincial-territorial initiative.

learn more  
at [crsb.ca](https://crsb.ca)

# GRASSLAND

Why More is Needed for Beef Herds



Ontario lost **40,000 head** from the provincial cow herd in the past 4 years



From 1991 to 2011 domestic grassland in Ontario was reduced by **38%**, reducing space for cattle



Grassland birds have declined by **57%** in Canada since 1970

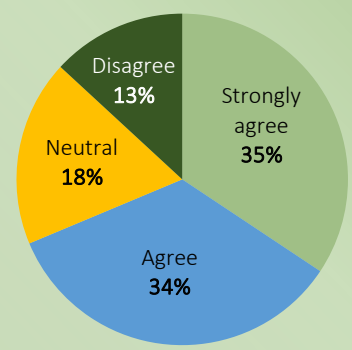
A survey was completed by 38 participants to characterize grassland pasture use in Ontario



## Ontario Needs to Utilize Shared Lands



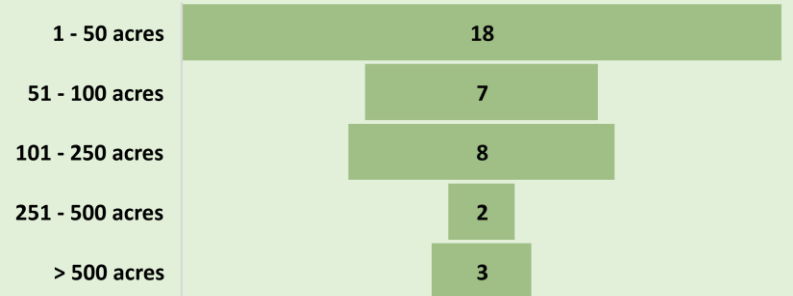
Survey data showed that with more grassland many farmers would increase their herd size.



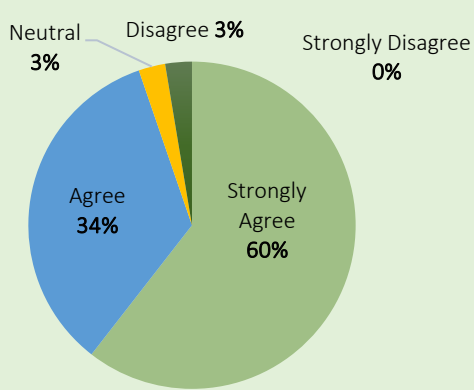
## Increased Grassland Area is Needed in Ontario

The majority of pasture surface areas in beef farms range from 1 to 50 acres!

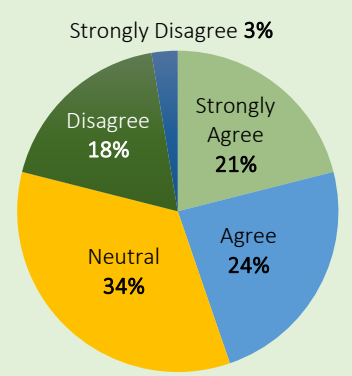
But as farmers aim to grow their herds, they require more lush grassland to sustain them.



**95%** of beef farmers see the benefits of grassland for cattle grazing



**45%** of beef farmers were interested in a community pasture if available



## Survey Highlights

**53%** Plan to increase their herd size within the next year

**39%** Plan to increase their grassland surface within the next year

**68%** Would increase their herd size if they had access to more grassland

Consumers within Ontario want more access to grassland in order to expand beef herds. Plans for shared grasslands and community pastures should be considered.

**Meeting Date:** April 17, 2025 **Item 6.2**  
**Report Date:** March 31, 2025  
**Submitted by:** Kelli Smith, Tim Payne

**Subject:** Opportunity to Partner with the Lambton Cattlemen's Association on a Community Pasture Project on McKeough Upstream Lands

---

**Recommendation:**

That the board of directors acknowledges this report regarding the proposed partnership with the Lambton Cattlemen's Association in creating a community pasture and support the presented concept/model; and further, direct staff to continue discussions with the Lambton Cattlemen's Association and bring back a proposed agreement to the Board.

**Background:**

On September 12, 2024, the Beef farmers of Ontario (BFO) sent a letter to Conservation Ontario regarding a resolution passed by the membership at their 2024 Annual General meeting. This resolution focused on fostering relationships between Ontario beef farmers and conservation authorities (CAs) and the interest in partnering and/or exploring the potential for beef farmers to rent conservation-owned land for cattle grazing.

The timing of this request aligned well with the adoption of the new St. Clair Region Conservation Authority (SCRCA) Agricultural Strategy which recommended converting fragile farmland to alternative land uses as an alternative to land retirement. Converting fragile land to pasture is intended to improve soil health and reduce erosion.

SCRCA staff followed up with BFO (only CA to respond) for further information regarding this potential partnership and were directed to meet with the Lambton Cattlemen's Association (LCA) to further discuss a potential partnership in Lambton County.

On Monday December 9<sup>th</sup>, SCRCA staff met with a committee from the LCA to discuss the option of renting land owned by the SCRCA for grazing purposes. The purpose of the meeting was to gauge the interest and need from local producers for more pastureland in the county and identify property that may be suitable for this purpose.

The result was that there is an interest from local producers for more pastureland in the county, specifically for newer or young producers who are just starting out. The LCA provided information received from Don Hargrave, President of the Ontario Association of Community Pastures, regarding the potential for a Community Pasture. There are 11 Community pastures in Ontario, these are pasturelands managed by a board of directors and a pasture manager. The land is provided to different producers who may need the land as grazing land becomes scarcer in Ontario. Community pastures provide a benefit of labour saving as the area is shared by different producers and can be a place for research and demonstration. The

understanding is the use of the pasture would be managed by the pasture manager and the SCRCA would be the land holder renting to the committee.

The LCA committee has shown an interest in a partnership with the SCRCA and through discussions with staff 3 properties have been proposed (approx. 185 acres). One of these properties is currently in hay while the other two are currently in row crop and would require conversion to pasture.

### **Benefit of Pasture**

In Ontario, there has been a widespread conversion over the years of pastureland and forages to grain and oilseed production. According to Statistics Canada, tame or seeded pasture has seen a decrease over the past ten years while land in crops has been increasing especially in Saskatchewan, Alberta and Southern Ontario ([https://capi-icpa.ca/wp-content/uploads/2022/07/2022-07-25-Ag-Census\\_QuickThink\\_Draft\\_7-Final\\_reduced.pdf](https://capi-icpa.ca/wp-content/uploads/2022/07/2022-07-25-Ag-Census_QuickThink_Draft_7-Final_reduced.pdf)). The loss of pastureland not only affects the agricultural sector but can also have environmental and ecological impacts. Pastureland provides numerous environmental benefits including improved soil health and reduced erosion due to year-long soil cover, improved carbon sequestration due to deeper root growth and increased plant biomass, improved biodiversity and wildlife habitat for pollinators and some species at risk, and improved water quality and filtration (OMAFRA Factsheet ISSN 1198-712X, Published December 15, 2021).

The objective identified in the SCRCA Agricultural Strategy is to aim to balance revenue with environmental sustainability on lands owned the by the SCRCA. As noted in the strategy, much of the agricultural land is identified as fragile land, meaning it is prone to erosion due to the physical features such as steeply sloped or poorly drained land and floodplains. Rather than pursuing permanent retirement of these lands, conversion to pasture provides an opportunity to better achieve a balance between revenue and environmental sustainability.

### **Strategic Objectives(s):**

From 2023 Strategic Plan - Goal 3.9 Management of Authority Owned Lands

Through the completion and implementation of Property Management Plans, the Authority continues to manage its lands to balance revenue production with effective management of woodlands, wetlands, and biodiversity.

From SCRCA Agricultural Strategy – Recommendation C-1

Recommended the SCRCA research alternative land uses from traditional row cropping to determine the anticipated benefits and issues associated with each. One simple alternative for some of the properties is to convert much of the suitable area to pasture or hay lands.

**Financial Impact:**

Costs of pasture establishment such as seeding, fencing, and watering will be the responsibility of the tenant (LCA Community Pasture). SCRCA staff will assist in grant acquisition for seeding/fencing where applicable.

The estimated rental rate for this concept/model is \$125/ac at approximately 185 acres the proposed revenue is \$23,125. This is approximately \$6,000 less than what was generated in 2024. During the last lease the some of the lands proposed received bids significantly higher than other comparable agricultural land owned by the authority.

Rental rates for the next lease term are unknown, this year the agricultural land will go out to tender. It is unknown whether rental rates for SCRCA agricultural land will increase, decrease or remain stagnant, if rates do not increase staff identified a potential shortfall in department funding in approximately 5 years this further proposed revenue reduction may accelerate the timeframe of this shortfall.

**Meeting Date:** April 17, 2025  
**Report Date:** April 7, 2025  
**Submitted by:** Ken Phillips

**Item 7.1**

**Subject:** Hearing Board

---

**Recommendation:**

That the Board of Directors acknowledge this report, dated April 7, 2025 regarding the establishment of a Hearing Board and nominate the following 9 Directors to the SCRCA Hearing Board for 2025, with the Chair and Vice Chair as ex-officio:

\_\_\_\_\_; \_\_\_\_\_; \_\_\_\_\_; \_\_\_\_\_; \_\_\_\_\_; \_\_\_\_\_;  
\_\_\_\_\_; \_\_\_\_\_.

**Background:**

On March 19, 2025 the Board of Directors voted in favour of establishing a dedicated Hearing Board of 11 individuals.

***BD-25-20***

***Kennes – McCabe***

***“That the Board of Directors acknowledge the report dated March 11, 2025 regarding the establishment of a dedicated Hearing Board; And that the Board of Directors establish a Hearing Board of 11 individuals, with meeting dates set quarterly, to deal with appeals under Section 28 of the Conservation Authorities Act; And further, that the General Manager be appointed the designated official to conduct the administrative review in accordance with s.8 Ontario Regulation 41/24.”***

**CARRIED**

As previous staff reports have indicated, revisions to the Conservation Authorities Act which came into effect on April 1, 2024 mandate the establishment of a dedicated Hearing Board to deal with appeals under Section 28 of the CA Act.

It was settled by the Board of Directors that the designation of 11 members will ensure that hearings can take place at a pre-designated date, without the challenge of having to reschedule and further, to avoid any chance of apprehension of bias. The smaller Hearing Board also allows for more efficient training of Directors to act within this capacity.

As a reminder, staff strongly recommend that no member of the Hearing Board be permitted to adjudicate a matter that affects either their municipality, or a citizen in their municipality.

**Tentative Hearing Board meeting dates\*:**

- June 19<sup>th</sup>, 2025
- September 11<sup>th</sup>, 2025
- December 4<sup>th</sup>, 2025
- March, 2026 (TBD)

\*In the event that no hearings are received within the quarter, hearing board meetings will be cancelled.

**Strategic Objectives(s):**

Goal 1: Strengthen and Raise the Profile of the SCRCA through Business Excellence

Goal 2: Develop and Maintain Programs that will Protect Life and Property from Natural Hazards such as Flooding and Erosion

**Meeting Date:** April 17, 2025  
**Report Date:** March 24, 2025  
**Submitted by:** Greg Wilcox

**Item 7.3**

**Subject:** Direct Award Agricultural Leases at LC Henderson and Warwick Conservation Areas

**Recommendation:**

That the Board of Directors acknowledges this report dated March 24, 2025 and further approves of direct awarding the agricultural leases for LC Henderson (LHC) and Warwick (WWK) Conservation Areas (CAs) to agricultural tenants operating on neighbouring lands with direct access to Authority agricultural fields, provided a satisfactory rental agreement can be obtained.

**Background:**

Included in the SCRCA’s agricultural lease program are agricultural lands located within each of the three Authority campground conservation areas. At both LC Henderson and Warwick CAs, there are elevated challenges/risks with the access to ag fields.

**Safety Concerns**

CA	Concerns
LCH	<ul style="list-style-type: none"> <li>• Tenant must cross the south weir to access ag land, the weir has experienced damage in the past from heavy equipment (costly repairs)</li> <li>• Steep hill to access ag field after crossing the weir, past tenants have experienced equipment sliding on hill (safety concerns, did not bid again)</li> <li>• Machinery must access through conservation area using main road (road large enough, but does pass transient camping and playground, concerned for visitor safety)</li> <li>• Due to weir and hill, no bids during last tender (negotiated lease with neighbour who accesses field through their own land)</li> </ul>
WWK	<ul style="list-style-type: none"> <li>• Tenant must drive through the busy day-use area, kids bike course, and campsites to access farmland (concern for visitor safety)</li> <li>• Busiest of our 3 campgrounds, many families with young children (kids may be drawn to farm equipment)</li> <li>• Neighbour was the high bidder during the past two tender processes, currently accesses the ag land through their field</li> </ul>

**Financial Impact:**

Direct award leases can produce lower revenues than those that are tendered. In this case, we do not anticipate significant reductions as there was no interest in LCH lands in the 2020 tender process and WWK is only a 16 acres lease. In both cases, we would like to continue with the current tenant.

**Meeting Date:** April 17, 2025  
**Report Date:** March 27, 2025  
**Submitted by:** Ashley Fletcher

**Item 8.1 (a)**

**Subject:** Business Arising

---

**Regarding BD-24-62**

**Report to be provided at a future meeting**

Directors request that a report be provided exploring the options and costs associated with providing an electric vehicle (EV) charging station within campground parking lots. It is also suggested that campground rules and regulations be proactively updated to prohibit EV charging on camp sites.

**Regarding BD-25-20**

**Refer to item 7.1**

That 11 individuals are chosen to comprise a dedicated Hearing Board to deal with appeals under Section 28 of the Conservation Authorities Act.

**Meeting Date:** April 17, 2025  
**Report Date:** March 27, 2025  
**Submitted by:** Emily De Cloet

**Item 8.1 (b)**

**Subject:** Watershed Conditions

## Report Highlights

- Overall, regional precipitation amounts are close to normal for the past 12-month period.
- Water levels on the surrounding Great Lakes are close to average for this time of year, with all lakes experience a decline from February into early March.
- The flood threat is currently low.

## Precipitation

**Table 1: Precipitation (in millimetres) for regional climate stations. Source: ECCC, 2025.**

Precipitation (mm)	Sarnia		Strathroy		London		Windsor	
	Actual	Normal	Actual	Normal	Actual	Normal	Actual	Normal
<b>Last Quarter</b>								
December 2024	65.5	68	125	92.4	154.5	88.6	71.1	74.7
January 2025	31.2	50.1	52.6	75.3	40.7	74.2	24.7	57.6
February 2024	29	47.7	43	61.1	47.9	60	18	57.3
<b>Averages</b>								
last 3-month totals	125.7	165.8	220.6	228.8	243.1	222.8	113.8	189.6
3-month % of normal	75.8%		96.4%		109.1%		60.0%	
regional average	<b>85.3%</b>							
last 6-month totals	282	402.2	407.4	483.9	371.8	489.2	211.3	426.2
6-month % of normal	70.1%		84.2%		76.0%		49.6%	
regional average	<b>70.0%</b>							
last 12-month totals	789.4	846.8	1108	945.1	1022.5	987	765.3	918.4
12-month % of normal	93.2%		117.2%		103.6%		83.3%	
regional average	<b>99.3%</b>							

- Regional precipitation over the past 12 months has been normal, with near-normal amounts in the last 6 months for Strathroy and London
- Precipitation values recorded at the Windsor and Sarnia climate stations reported below normal values in both the 3- and 6-month totals.

- Strathroy recorded normal 3-month precipitation values, with London recording above-normal amounts.

## Lake Levels

**Table 2: Surrounding lakes water level comparison. Source: ECCC, 2025.**

February 2025	Lake Huron	Lake St. Clair	Lake Erie
Mean for Month (Preliminary Data)	176.12	174.68	174.07
Mean for Month Last Year	176.40	175.21	174.43
Change	<b>-0.28</b>	<b>-0.53</b>	<b>-0.36</b>
Mean for Month, Last 10 years	176.67	175.26	174.44
Change Compared to Current	<b>-0.55</b>	<b>-0.58</b>	<b>-0.37</b>
Mean for Month, All Time	176.31	174.82	174.03
Change Compared to Current	<b>-0.19</b>	<b>-0.14</b>	<b>0.04</b>
<b>Statistics for Period of Record</b>			
Maximum Monthly Mean / Year	177.25	175.80	174.90
	2020	1986	2020
Change Compared to Current	<b>-1.13</b>	<b>-1.12</b>	<b>-0.83</b>
Minimum Monthly Mean / Year	175.59	173.89	173.18
	1964	1926	1936
Change Compared to Current	<b>0.53</b>	<b>0.79</b>	<b>0.89</b>
<b>Next Month Estimate</b>			
Projected Mean for March	176.12	174.92	174.10
Beginning-of-March 2025 level	176.10	174.82	174.04

- March 2025 is the first month since February 2013 where all Great Lakes started a month below average
- All Great Lakes are showing dry to very dry water supply conditions (the result of the combined effects of precipitation, evaporation and runoff).
- Lakes Huron and St. Clair both saw an above-average monthly decline, with Lake Erie seeing a decline in water levels instead of its usual rise for February.

## Forecast & Flood Threat

Over the next five days, areas around the watershed could receive upwards of 45 mm of mixed precipitation, mainly in the form of rain. With lower water levels on Lakes Huron and St. Clair, and a metre of freeboard in Wallaceburg at this time, the flood threat is currently low.



## Staff Report

**Meeting Date:** April 17, 2025 **Item 8.1 (c)**  
**Report Date:** March 27, 2025  
**Submitted by:** Melissa Deisley, Jeff Vlasman, Meagan Weber,  
 Merrick Van Der Vaart  
**Subject:** Regulations Activity Summary

A summary of staff activity related to the Conservation Authority's Prohibited Activities, Exemptions and Permits (Ontario Regulation 41/24) is presented below. This report covers the period from February 1, 2025 to February 28, 2025

### Regulations Permits Issued

Application #	Location	Municipality	Proposal	Submitted	Issued	Days
R#2023-0690	9612 Meadowvale Ln, Wallaceburg	Chatham-Kent	build shop/shed	Feb-11	Feb-24	13
R#2024-0301	522 Creek St, Wallaceburg	Chatham-Kent	build an addition to an existing garage	Feb-11	Feb-27	16
R#2024-0692	9393 Short Ln, Wallaceburg	Chatham-Kent	Sydenham River Slope Stabilization	Feb-18	Feb-21	3
R#2025-0002	north of 7540 Base Ln, Wallaceburg	Chatham-Kent	relocation of the Wallaceburg Distribution Station	Jan-30	Feb-04	5
R#2025-0035	6074 Dufferin Ave, Wallaceburg	Chatham-Kent	detached garage & carport	Jan-21	Feb-12	22
R#2023-0272	4852 Forsyth Trail, Camlachie	Plympton-Wyoming	build deck in shoreline area 1	Nov-20	Feb-06	78
R#2024-0810	0 Seaway Rd, Sarnia	Sarnia	like-for-like culvert replacement & temp. removal of shore protect.	Jan-17	Feb-12	26
R#2025-0036	4791 Waterworks Rd, Sarnia	Sarnia	integrity dig	Jan-21	Feb-13	23
R#2025-0042	6419 Brigden Rd, Sarnia	Sarnia	build detached garage	Feb-26	Feb-26	1
<b>Total Permits Issued: 9</b>		<b>Average Number of Days to Issue for this Period: 20.78</b>				

## Regulations Inquiries

<b>FileReference</b>	<b>Municipality</b>	<b>Location</b>
R#2025-0058	Adelaide-Metcalfe	1402 Murphy Dr, Strathroy
R#2025-0099	Adelaide-Metcalfe	2358 Katesville Dr, Kerwood
R#2025-0102	Adelaide-Metcalfe	3241 Napperton Dr, Strathroy
R#2024-0672	Brooke-Alvinston	7435 Shiloh Ln, Alvinston
R#2025-0055	Brooke-Alvinston	7291 Churchill Ln, Watford
R#2025-0027	Chatham-Kent	102 Chanel Ecarte, Martin Islands
R#2025-0056	Chatham-Kent	69 McNaughton Ave, Wallaceburg
R#2025-0062	Chatham-Kent	10442 & 10434 Cedar Hedge Ln, Dresden
R#2025-0065	Chatham-Kent	27314 Fraser Rd, Wallaceburg
R#2025-0072	Chatham-Kent	107 Hiram St, Wallaceburg
R#2025-0101	Chatham-Kent	8110 Electric Ln (Closest address)
R#2025-0105	Chatham-Kent	25351 Kent Bridge Rd, Dresden
R#2024-0592	Enniskillen	5673 Oil Springs Ln, Oil Springs
R#2025-0033	Enniskillen	5075 Shiloh Ln, Petrolia
R#2025-0054	Enniskillen	3977 Oil Heritage Rd, Oil Springs
R#2025-0083	Enniskillen	4743 Black Ash Rd, Petrolia
R#2025-0082	Lambton Shores	vacant parcel b/w 9644 and 9652 West Ipperwash Road
R#2025-0092	Lambton Shores	6278 Spruce St, Lambton Shores
R#2025-0046	Middlesex Centre	9554 Gold Creek Rd, Komoka
R#2025-0052	Oil Springs	4859 Oil Springs Ln, Oil Springs
R#2023-0167	Plympton-Wyoming	lot southwest of 3965 George St, Camlachie
R#2025-0045	Plympton-Wyoming	5046 Lakeshore Rd, Plympton Wyoming
R#2025-0090	Plympton-Wyoming	7800 Gallie St, Camlachie
R#2025-0053	Point Edward	Point Edward Waterfront
R#2025-0047	Sarnia	2873 Old Lakeshore Rd, Bright's Grove
R#2025-0069	Sarnia	718 + 722 Cathcart Blvd, Sarnia
R#2025-0073	Sarnia	1604 Churchill Ln, Sarnia
R#2025-0097	Sarnia	504 Woodrowe Ave, Sarnia
R#2025-0100	Sarnia	2341 Michigan Rd, Sarnia
R#2025-0103	Sarnia	b/w 1327 & 1341 Plank Rd, Sarnia
R#2024-0776	St. Clair	3188 Telfer Rd, Brigden
R#2025-0020	St. Clair	east of 1715 Bickford Ln, Sombra

R#2025-0059	St. Clair	1436 St. Clair Pkwy, Courtright
R#2025-0060	St. Clair	3595 Tecumseh Rd (Nearest address)
R#2025-0071	St. Clair	Tyler Dr, Port Lambton
R#2025-0098	St. Clair	4395 Brigden Rd, Brigden
R#2020-0846	Strathroy-Caradoc	LOT 19, CON 4 SER
R#2025-0084	Strathroy-Caradoc	295 + 297 Metcalfe St East, Strathroy
R#2025-0089	Strathroy-Caradoc	700 Adair Blvd, Strathroy
R#2025-0032	Warwick	Confederation Ln & Nauvoo Rd
R#2025-0043	Warwick	8673 Egremont Rd, Watford

**Total Regulations Inquiries: 41**

## Regulations - DART Completed Files

File Reference	Municipality	Drain / Watercourse
R#2025-0050	Strathroy-Caradoc	Cadman Drain

**Total DART Permits Issued: 1**

## Regulations Permits - Drains

File Reference	Municipality	Drain / Watercourse
R#2022-0698	Brooke-Alvinston	Cherry Creek
R#2023-0719	Plympton-Wyoming	McCull O'Donnell Drain

**Total Regulations Inquiries Regarding Drains: 2**



## Staff Report

**Meeting Date:** April 17, 2025 **Item 8.1 (d)**  
**Report Date:** March 27, 2025  
**Submitted by:** Melissa Deisley, Shelby Campbell, Kelsey Oatman  
  
**Subject:** Planning Activity Summary

A summary of staff activity related to Municipal Plan Input and Review is presented below. This report covers the period from February 1, 2025 to February 28, 2025

Municipal Plan Input and Review			
File Reference	Location	Municipality	Municipal File
PL#2023-0018	1040 Melwood Drive	Adelaide-Metcalf	Z01-2025 B01-2023
PL#2025-0009	1402 Murphy Drive	Adelaide-Metcalf	
PL#2025-0008	3196 River Street	Brooke-Alvinston	B-001/25
PL#2023-0030	968 Wallace St E, Wallaceburg	Chatham-Kent	
PL#2025-0011	29395 Zone Rd 1	Chatham-Kent	D-14 ZO/01/25/M B-01/25; B-02/25
PL#2025-0013	9219 McCreary Line	Chatham-Kent	B-04/25
PL#2025-0020	5041 & 5075 Shiloh Line	Enniskillen	B001/25
PL#2021-0040	5958 Lakeshore Road	Lambton Shores	Z10-2024
PL#2022-0052	9395 Ipperwash Road	Lambton Shores	OPA03-2024 (OPA11) Z08-2024 (By-law 44 of 2024)
PL#2024-0056	Victoria St and Railroad Way	Lambton Shores	
PL#2022-0009	4472 North Street	Petrolia	
PL#2022-0053	Country View Drive	Petrolia	38T-24003
PL#2025-0014	450 Blanche Street	Petrolia	
PL#2020-0075	4386 Confederation Line	Plympton-Wyoming	OPA 53 ZBA 4 of 2024; ZBA 3 of 2025 B-03/24 A-03/24
PL#2023-0027	Fleming Road and Creekside Drive	Plympton-Wyoming	B-05/23, B-06/23 A-26/23
PL#2024-0078	5249 Egremont Rd, 6242 Blue Heron Rd, 5202 Michigan Line	Plympton-Wyoming	ZBA 9 of 2025 B-20/24 A-26/24

PL#2025-0015	4933 Edith Lane	Plympton-Wyoming	B-03/25
PL#2025-0019	3790 Lakeshore Road	Plympton-Wyoming	
PL#2021-0134	North of Exmouth	Point Edward	Z-01-23
PL#2019-088	6491 Waterworks Road	Sarnia	
PL#2024-0098	485 Harbour Road	Sarnia	
PL#2025-0010	2099 Churchill Line	Sarnia	
PL#2025-0012	4096 St. Clair Parkway	St. Clair	A-02-25
PL#2025-0018	Grove Street (Lot E, Con 7, Sombra)	St. Clair	
PL#2018-018	22805 Adelaide Road	Strathroy-Caradoc	ZBA15-2021 39T-SC2101
PL#2019-084	101 Hull Road	Strathroy-Caradoc	OPA2-2024 (OPA20) ZBA4-2024
PL#2020-0047	96 Kittridge Ave E, Strathroy	Strathroy-Caradoc	SPA12-2024
PL#2021-0016	Lot 7 Carrie Street	Strathroy-Caradoc	
PL#2021-0054	N of Napperton Drive, Pt Lot 19, Con 4	Strathroy-Caradoc	39T-SC2302
PL#2021-0122	131 and 135 Caradoc St N	Strathroy-Caradoc	
PL#2024-0077	29 Caradoc Street South	Strathroy-Caradoc	ZBA13-2024 SPA1-2025
PL#2025-0016	6766 Inadale Drive	Strathroy-Caradoc	B1-2025
PL#2025-0017	544 Regent Street	Strathroy-Caradoc	A2-2025
PL#2024-0066	east of 7985 Confederation Line	Warwick	
<b>Total Plan Review Items: 34</b>			

## Environmental Assessments

File Reference	Location	Municipality
EA#2022-0013	1464 St. Clair Pkwy	St. Clair
EA#2024-0010	Lot 9, Con 2, Moore	St. Clair

**Total Environmental Assessments: 2**

## Legal Inquiries

<b>File Reference</b>	<b>Location</b>	<b>Municipality</b>
LL#2025-0004	east of 9597 Brook Line	Chatham-Kent
LL#2025-0005	behind 9597 Brook Line	Chatham-Kent
LL#2025-0006	11511 Ivan Drive	Middlesex Centre
<b>Total Legal Inquiries: 3</b>		

Prepared By: Chunning Li  
 March 20, 2025  
 DRAFT

**ST CLAIR REGION CONSERVATION AUTHORITY**  
**Statement of Revenue and Expenditure**  
**As at Feb. 28, 2025**

	Actual To Date			Annual Budget Prorated		Variance from Budget	
	Revenue	Expenditures	Surplus(Deficit)	Revenue	Expenditures	Revenue	Expenditures
<b>Flood Control &amp; Erosion Control</b>	\$540,474	\$47,858	\$492,617	\$70,063	\$70,063	\$470,411	(\$22,206)
<b>Capital Projects/WECI</b>	\$1,855,778	\$792,551	\$1,063,227	\$820,500	\$820,500	\$1,035,278	(\$27,949)
<b>Conservation Area's Capital Development</b>	\$0	\$0	\$0	\$16,917	\$16,917	(\$16,917)	(\$16,917)
<b>IT Capital</b>	\$4,565	\$0	\$4,565	\$2,898	\$4,500	\$1,667	(\$4,500)
<b>Equipment</b>	\$8,441	\$0	\$8,441	\$14,931	\$13,329	(\$6,490)	(\$13,329)
<b>Planning &amp; Regulations</b>	\$704,431	\$110,267	\$594,165	\$159,767	\$159,767	\$544,664	(\$49,500)
<b>Technical Studies</b>	\$518,764	\$65,426	\$453,338	\$37,925	\$37,925	\$480,839	\$27,501
<b>Recreation</b>	\$207,008	\$111,154	\$95,854	\$304,530	\$304,530	(\$97,522)	(\$193,376)
<b>Property Management</b>	\$12,013	\$49,192	(\$37,180)	\$37,412	\$54,079	(\$25,399)	(\$4,886)
<b>Education</b>	\$36,952	\$37,974	(\$1,022)	\$24,455	\$24,455	\$12,498	\$13,519
<b>Communication</b>	\$142,266	\$20,925	\$121,341	\$22,044	\$22,044	\$120,222	(\$1,119)
<b>Source Water Protection</b>	\$102,617	\$18,155	\$84,462	\$47,281	\$47,281	\$55,336	(\$29,126)
<b>Conservation Services/Healthy Watersheds</b>	\$709,045	\$92,149	\$616,896	\$105,364	\$105,364	\$603,681	(\$13,215)
<b>Administration/AOC Management</b>	\$1,130,428	\$114,349	\$1,016,079	\$182,444	\$182,444	\$947,985	(\$68,094)
	<b>\$5,972,783</b>	<b>\$1,460,000</b>	<b>\$4,512,784</b>	<b>\$1,846,530</b>	<b>\$1,863,197</b>	<b>\$4,126,254</b>	<b>(\$403,197)</b>

**Notes:**

1. General and special levies have been invoiced and are recorded in the actual revenue reported above. See General Levy Report for amounts outstanding.
2. The significant variances from budget to actual is reflective of the nature/timing and uniqueness of the particular projects. The variances will reduce and disappear as the year progresses.
3. Budget for the year is divided by 12 and multiplied by the number of months in the reporting period, this does not reflect the seasonality of the nature/ timing of projects



## ST. CLAIR REGION CONSERVATION AUTHORITY

## Cheques issued January-March 2025

CHQ. #	DATE	VENDOR	DESCRIPTION	AMOUNT
124213	2025-01-23	Larry MacDonald Chev Olds	Vehicle service	\$ 5,265.78
124217	2025-01-23	PSD Citywide Inc	Compliant Asset Management Plan	\$ 5,650.00
124220	2025-01-23	University of Western Ontario	Structural health monitoring of concrete dam	\$ 20,000.00
124221	2025-01-23	Van Bree Drainage & Bulldozing	Seagar Park shore protection revitalization	\$ 85,627.93
124243	2025-02-19	Cornelissen Farms Inc	Grant - installation of berms	\$ 30,000.00
124246	2025-02-19	Gary Falconer Transport Ltd	Coldstream parking area upgrade, Mill Pond trail repair	\$ 31,670.51
124252	2025-02-19	Somerville Nurseries Inc	Stock deposit for tree seedlings	\$ 17,000.00
124254	2025-02-19	Van Bree Drainage & Bulldozing	Penhuron to Kenwick shoreline improvements	\$ 426,702.23
124262	2025-02-24	Avensys Solutions	Biology equipment	\$ 126,297.28
124270	2025-03-06	Shoreplan Engineering Ltd	Old Lakeshore Road - Penhuron to Kenwick shoreline work	\$ 6,743.28
124280	2025-03-12	Talbot Uniforms	Employee uniforms	\$ 5,253.28
124289	2025-03-26	CP Industries Ltd	Enzyme deodorizer for campground washrooms	\$ 5,175.04
124290	2025-03-26	Crump Enterprises Ltd	2-Hibernacula & nest building on Brigden Rd E of Wilkesport	\$ 7,825.25
124303	2025-03-26	Minuteman Press London South	Species at Risk newsletters	\$ 8,625.33
124308	2025-03-26	Shoreplan Engineering Ltd	Professional services - Seagar Park shoreline revitalization	\$ 15,626.11
124313	2025-03-26	Teramara Technologies Inc	Biology equipment	\$ 32,205.00
124317	2025-03-26	Van Bree Drainage & Bulldozing	Seagar Park shore protection revitalization holdback release	\$ 79,999.79
124321	2025-03-26	Conservation Ontario	2025 levy installment #1	\$ 15,850.00
<b>TOTAL CHEQUE DISBURSEMENTS -</b>				<b>\$ 925,516.81</b>

## Internet banking payments for January-March 2025

TRANS #	DATE	VENDOR	DESCRIPTION	AMOUNT
10781	2025-01-31	MNP LLP	2024 year-end audit invoice #1	\$ 11,865.00
10783	2025-01-31	OMERS	Employee pension plan	\$ 60,363.90
10784	2025-01-31	Ontario Minister of Finance	Employer health tax	\$ 6,457.19
10787	2025-01-31	Receiver General	Payroll source deductions	\$ 99,959.18
10789	2025-01-31	RWAM Insurance Administrators Inc	Employee group benefits	\$ 17,638.39
10793	2025-01-31	Workplace Safety & Insurance Board	WSIB premiums	\$ 9,238.75
10794	2025-01-31	Libro Credit Union - Visa	Employee expenses	\$ 14,642.28
10806	2025-02-28	Libro Credit Union - Visa	Employee expenses	\$ 8,338.02
10807	2025-02-28	MNP LLP	2024 year-end audit invoices #2 & #3	\$ 11,865.00
10814	2025-02-28	OMERS	Employee pension plan	\$ 40,712.64
10818	2025-02-28	Receiver General	Payroll source deductions	\$ 67,252.94
10820	2025-02-28	RWAM Insurance Administrators Inc	Employee group benefits	\$ 17,113.02
10824	2025-02-28	Township of St Clair - Property Taxes	Property taxes	\$ 21,166.42
10825	2025-02-28	Township of Warwick - Property Taxes	Property taxes	\$ 5,205.00
10828	2025-02-28	Workplace Safety & Insurance Board	WSIB premiums	\$ 6,231.45
10839	2025-03-31	Libro Credit Union - Visa	Employee expenses	\$ 9,603.02
10842	2025-03-31	OMERS	Employee pension plan	\$ 45,650.44
10846	2025-03-31	Receiver General	Payroll source deductions	\$ 76,374.67
10848	2025-03-31	RWAM Insurance Administrators Inc	Employee group benefits	\$ 18,563.45
<b>TOTAL INTERNET BANKING DISBURSEMENTS -</b>				<b>\$ 548,240.76</b>

<b>Visa purchases:</b>	MTO - vehicle registration	\$	506.00
	MTO - vehicle registration	\$	651.75
	MTO - vehicle registration	\$	506.00
	MTO - vehicle registration	\$	506.00
	Barco - picnic tables & benches	\$	4,510.37
	Prolab Scientifique - syringes & filters	\$	563.25
	4imprint - banners	\$	527.08
	KeyContact	\$	687.22
	Atwork Office Furniture	\$	1,661.09
	Arboriculture Canada - tree felling & cutting course	\$	985.55
	Bluehost annual host fee	\$	642.34
	Fanshawe - winter term courses	\$	652.46
	Sharp Bus Lines - Maple Syrup festival transport	\$	1,423.80
	OPFA - Conference	\$	645.00
	Walkerton Clean Water Centre - drinking water training	\$	519.80
	Tenaquip - speed bumps for AWC	\$	695.86
	Tenaquip - speed bumps for WWK	\$	695.85
	Badder Bus Lines - project tour	\$	1,300.00
	Henry's - GLFEI drone	\$	1,730.00
	Oregon RFID & exchange fee	\$	1,066.51

## PAYROLL RUNS

Payroll No. 1	\$	72,979.25
Payroll No. 2	\$	77,804.97
Payroll No. 3	\$	77,241.89
Payroll No. 4	\$	74,671.05
Payroll No. 5	\$	75,371.85
Payroll No. 6	\$	81,769.78
Payroll No. 7	\$	86,515.87
<b>TOTAL PAYROLL RUNS -</b>	<b>\$</b>	<b>546,354.66</b>



### 2025 GENERAL LEVY SUMMARY

---

MUNICIPALITY	GROSS LEVY	PAID TO DATE	OUTSTANDING
Adelaide Metcalfe Tp	\$ 32,760.80	\$ -	\$ 32,760.80
Brooke-Alvinston Tp	\$ 29,048.29	\$ 29,048.29	\$ -
Chatham-Kent Mn	\$ 219,146.98	\$ 219,146.98	\$ -
Dawn-Euphemia Tp	\$ 43,791.86	\$ 43,791.86	\$ -
Enniskillen Tp	\$ 31,468.39	\$ -	\$ 31,468.39
Lambton Shores Mn	\$ 86,252.27	\$ 86,252.27	\$ -
Middlesex Centre Mn	\$ 40,175.56	\$ 40,175.56	\$ -
Newbury V	\$ 2,638.86	\$ 2,638.86	\$ -
Oil Springs V	\$ 3,496.55	\$ 3,496.55	\$ -
Petrolia Tp	\$ 43,765.12	\$ -	\$ 43,765.12
Plympton Wyoming Tp	\$ 96,663.84	\$ -	\$ 96,663.84
Point Edward V	\$ 35,061.95	\$ -	\$ 35,061.95
Sarnia	\$ 616,272.74	\$ -	\$ 616,272.74
Southwest Middlesex Mn	\$ 19,444.58	\$ 19,444.58	\$ -
St Clair Tp	\$ 184,750.98	\$ -	\$ 184,750.98
Strathroy-Caradoc Tp	\$ 153,371.40	\$ 153,371.40	\$ -
Warwick Tp	\$ 37,839.84	\$ 37,839.84	\$ -
<b>TOTAL</b>	<b>\$ 1,675,950.01</b>	<b>\$ 635,206.19</b>	<b>\$ 1,040,743.82</b>

**Meeting Date:** April 17, 2025 **Item 8.1 (h)**  
**Report Date:** March 26, 2025  
**Submitted by:** Mike Moroney and Donna Blue

**Subject:** St. Clair River Area of Concern Update

---

## **Background:**

### **Degradation of Fish and Wildlife Populations – BUI #3**

The community engagement process on the recommendation to redesignate this BUI to “*not impaired*” remains underway. Presentations have been made to the Aamjiwnaang First Nation Environment Committee, the Walpole Island First Nation Heritage Centre Open House, and the Walpole Island First Nation community. The need for additional engagement with the Walpole Island First Nation community is currently being assessed. The Binational Public Advisory Council confirmed their support with the recommendation to redesignate this BUI to *Not Impaired* during their meeting on February 13, 2025.

### **Restrictions on Drinking Water Consumption or Taste and Odour Problems – BUI #9**

Staff received confirmation from Environment and Climate Change Canada on June 13, 2024, that this BUI has been officially redesignated to not impaired as per the recommendation of the status assessment report prepared by the Canadian Remedial Action Plan Implementation Committee (CRIC). The Binational Public Advisory Council is considering opportunities for a celebration to recognize this achievement.

### **Loss of Fish and Wildlife Habitat – BUI #14**

The status assessment report has been completed for this BUI and community engagement remains underway to seek feedback on the recommendation that it be redesignated to *Not Impaired*. A presentation was made to the Aamjiwnaang First Nation Environment Committee on December 3, 2024, and to the Walpole Island First Nation community on March 17, 2025.

## **Recent and Scheduled Meetings**

### **Canadian RAP Implementation Committee (CRIC)**

- April 25, 2024
- June 18, 2024
- November 27, 2024.
- Next meeting is anticipated to be scheduled in Spring 2025.

### **Friends of the St. Clair River (FOSCR)**

- July 25, 2024
- October 30, 2024
- Annual General Meeting held December 9, 2024

- February 24, 2025
- March 19, 2025

### **Binational Public Advisory Council (BPAC)**

- November 7, 2024
- February 13, 2025
- Next meeting is tentatively scheduled for May 15, 2025.

### **Outreach and Engagement:**

#### **Newsletter**

Friends of the St. Clair River and the RAP Office continue to partner on the production of St. Clair River News, a free monthly e-newsletter: [March 2025 Newsletter](#)

#### **Walpole Island First Nation Heritage Centre Open House**

The event, held on February 18, 2025, was well attended by the community. The RAP Coordinator participated by setting up a display booth and speaking with community members about the status of progress in addressing the St. Clair River BUIs, and BUI 14 in particular, through the use of hand-outs and fact sheets.

#### **Bluewater Anglers Hatchery Open House**

On March 15, 2025, the RAP Coordinator assisted the Friends of the St. Clair River at the Bluewater Anglers Open House. This event was designed to educate the community about the process of raising Chinook Salmon, Rainbow Trout, and Brown Trout for release into the upper St. Clair River and lower Lake Huron. It also served as an excellent platform to update attendees on the ongoing efforts to restore the St. Clair River.

#### **Management of Contaminated Sediment**

The remediation of three contaminated sediment areas in the St. Clair River, which began in November 2024, was successfully completed in March 2025. This project, carried out by a contractor hired by Dow Canada, involved the application of an erosion-resistant cover. The completion of this work marks significant progress towards addressing two remaining Beneficial Use Impairments: BUI #1 (Restrictions on Fish and Wildlife Consumption) and BUI #6 (Degradation of Benthos).

#### **RAP Coordinator Position:**

The St. Clair River Remedial Action Plan Coordinator for the St. Clair River Area of Concern retired at the end of March 2025. Recruitment efforts to appoint a new coordinator are currently underway.

#### **Strategic Objectives(s):**

To ensure that our rivers, lakes and streams are properly safeguarded, managed and restored.

**Financial Impact:**

Funding for the RAP Coordinator position is provided by the Ministry of the Environment, Conservation and Parks (MECP) and Environment and Climate Change Canada (ECCC).

Funding was secured from MECP for the 2024-2025 and 2025-2026 fiscal years under their Great Lakes Program, and funding was secured from ECCC for the 2024-2025 and 2025-2026 fiscal years under the federal Great Lakes Freshwater Ecosystem Initiative Program.

The RAP Coordinator holds monthly meetings with ECCC and MECP to provide regular updates on the status of the RAP work and prepares project status reports and financial update reports in accordance with the timelines in the respective funding agreements.

**Meeting Date:** April 17, 2025  
**Report Date:** March 27, 2025  
**Submitted by:** Donna Blue

**Item 8.1 (i)**

**Subject:** Communications Update

---

### **2025 Maple Syrup Festival:**

Between 400 and 500 people visited the A.W. Campbell Conservation Area for the 2025 Maple Syrup Festival on March 15<sup>th</sup>. Held in partnership with the Brooke-Alvinston Firefighters Association annual pancake breakfast, visitors were treated to demonstrations of historical maple syrup production, wagon rides, maple taffy, and hot chocolate.

Building upon the success of the 2024 event, the 2025 festival once again featured local vendors and environmental groups along with a shuttle to and from the Conservation Area. The event was generously sponsored by Bluewater Power, the St. Clair Region Conservation Foundation, and the Optimist Club of Alvinston Districts.



Mooretown based Bear Creek Stables once again provided wagon rides during the 2025 Maple Syrup Festival.



Attendees take advantage of the Sugar Shack photo op at the 2025 Maple Syrup Festival.



Melissa Levi, Conservation Education Coordinator demonstrates historical maple syrup production.



Maple taffy was once again offered to visitors during the 2025 event.

## Sydenham River Canoe and Kayak Race

The Sydenham River Canoe and Kayak Race has been an annual tradition for 50 years. Serving as a fundraiser for Conservation Education, the race features 11 different race classes and three different race lengths along the Sydenham River.

In early January, staff held a meeting to discuss the 2025 race tentatively scheduled for April 27<sup>th</sup>. It was during this meeting that several concerns and challenges were brought forward. Staff ultimately decided not to move forward with the 2025 race to reassess a number of factors that have influenced the past success of the race and the future success of holding the race.

Below is a summary of the challenges and concerns discussed:

1. **Safety** – For the 2024 edition of the race, the Ontario Marathon Canoe and Kayak Racing Association (OMCKRA) required staff to submit a comprehensive Race Safety Strategy. Through the completion of this important document, staff identified areas of concern, specifically relating to river access during an emergency situation (the majority of land bordering the river is private property and, in some locations, a good distance away from the nearest roadway).
2. **Time of Year** – Weather during the spring season can be unpredictable. Since 2018, the race has had to be cancelled three times due to flooding and wet conditions at the start and finish lines, and high-water levels. In addition, water temperatures at this time of the year are low and pose the risk of participants suffering from hypothermia if they were to capsize.
3. **Logistics** – The start and finish lines have experienced damage due to the soft terrain and slippery banks associated with the spring season.
4. **Fundraising** – The race serves as a fundraiser for Conservation Education but unfortunately continues to bring in a minimal amount compared to the costs associated

with running the race. The race requires a significant amount of staff time to plan and execute.

Staff will continue to discuss the items noted above but are also considering alternative events that may serve as fundraisers that require lower overhead costs, staff time, and risk.

### Media and Social Media Analytics:

In order to continually improve upon our activities related to local media outlets and social media, communications staff will be reviewing analytics to help assess our communications efforts.

The following statistics cover the timeframe from January 1<sup>st</sup> to February 28<sup>th</sup>, 2025:

#### Media Relations:

Activity	2025 (January - February)	2024 (January - February)
Media Releases	0	2
News Article Mentions	105	127

### Social Media

#### Facebook:

Activity	Total	2025 (January – February)	2024 (January – February)
Post Reach*	--	21,966	19,599
Page Visits	--	1,532	1,202
New Likes/Followers	2,865	41	37
Posts	--	30	25

\***Post Reach** – The number of people who saw any content from your Page or about your Page, including posts, stories, ads, social information from people who interact with your Page, etc.

**X (Formerly Twitter)**

<b>Activity</b>	<b>Total</b>	<b>2025 (January – February)</b>	<b>2024 (January – February)</b>
Posts	--	29	29
Reposts	--	19	26
New Followers	925	0	0
Engagements*	--	212	255

\* **Engagements** = clicks, retweets, replies, follows, and likes

**Instagram**

<b>Activity</b>	<b>2025 (January – February)</b>	<b>2024 (January – February)</b>
Total Followers	1,173	1,044
Views	10,403	9,390
Reach	2,101	4,309
Engagements*	451	450

\* **Engagements** = The number of likes or reactions, saves, comments, shares and replies on your content

**New Social Media Channels – Sydenham River and St. Clair Region Conservation Foundation:**

To support the work being completed under the Sydenham Phosphorus Reduction Initiative (SPRI), two new social media pages were created – search Sydenham River on Facebook and Instagram.

The St. Clair Region Conservation Foundation also has Facebook and LinkedIn social media pages. We encourage all Board Members to follow and share!

**Strategic Objectives(s):**

**Goal 4** – Provide recreation and education opportunities for the public to enjoy and learn from our natural environment.

**Meeting Date:** April 17, 2025 **Item 8.1 (j)**  
**Report Date:** March 26, 2025  
**Submitted by:** Melissa Levi, Myra Spiller, Mark Northcott

**Subject:** Conservation Education Report – April Education Program  
Summary

---

## **Background:**

### **Spring Outdoor Education Program:**

#### **Maple Syrup Program**

Approximately 260 students visited A.W. Campbell Conservation Area to participate in the Sweet Maple Syrup field trip this year. Field trips were held March 18th-21st, 2025.

#### **Field Trips**

The St. Clair Education team is currently booking Spring Field Trips. To date approximately 2,100 students are expected to visit from 23 different watershed schools. There are still spaces left; teachers to continue to inquire about bookings daily.

#### **Nature in your Neighbourhood**

St. Clair Conservation is now booking Spring Schoolyard programs. So far, ~150 students are registered to participate this Spring. There are still spaces left, and it is anticipated more schools will register for May-June 2025.

### **Sponsored Education Program Updates:**

#### **Plains Midstream Canada – Spring Water Awareness Schoolyard Program**

Thanks to Plains Midstream Canada, who continues to fund this program, approximately 1,000 students at 9 schools will participate in activities that will teach them to stay safe in the springtime by keeping away from the edge of the water.

### **Great Lakes Freshwater Ecosystem Initiative Fund Update:**

#### **Future Farmers Program**

Education Staff are currently halfway through delivering the 5-day Future Farmers program for the 2025 winter semester (January–May). The program consists of three days of in-class instruction, a field trip to two local farms, and a final day at Lorne C. Henderson Conservation Area, where students will engage in additional learning opportunities with members of the SCRCB Biology Team. So far, staff have completed the first two days of in-class sessions with nine classes from five different schools, reaching approximately 225 students. The Education Team is thrilled with the positive feedback the program has been receiving from both participating students and teachers.

### **Specialist High Skills Major (SHSM) Agricultural and Environmental Student Conference:**

The 2025 SHSM Agricultural and Environmental Student Conference will take place at the Greenwood Recreation Centre in Petrolia, Ontario, on May 28th, 2025. Approximately 150 students from Specialist High Skills Major programs, focusing on agriculture and the environment, will be in attendance. Students will have the opportunity to participate in five engaging sessions covering topics such as agricultural equipment demonstrations (including sprayers, drones, etc.), agricultural land stewardship, and water monitoring and testing. The nine sessions offered will be led by SCRCA staff, industry leaders, and subject matter experts, with a focus on educating students about the challenges of phosphorus pollution and how agriculture can play a role in addressing this critical issue.

### **First Nations Program Engagement:**

#### **Land-Based Education Project at Kettle and Stony Point First Nation**

Education staff continue to partner in the development of the school's Land-Based Education Program. Programming will run bi-weekly until June 2025. Education Staff are hopeful to acquire additional funding to ensure this valuable partnership can continue.

#### **Land-Based Education Project at Aamjiwnaang First Nation**

As part of the ongoing land-based education project, students from Aamjiwnaang Kinooomaage Gamig, attended the Maple Syrup Experience field trip at A.W. Campbell Conservation Area. Monthly bushwalks in the forest behind the school will continue until June.

### **Committee Involvement:**

#### **Rekindle the Sparks Planning Committee**

Education Staff continue to provide support to this committee. Planning for the 2025 conference is well underway, with conference dates planned for November 19-21<sup>st</sup>, 2025.

#### **Arbour Week Committee**

The Education Team continues to be a part of the Arbor Week Committee.